

Comisión Interamericana del Atún Tropical
Inter-American Tropical Tuna Commission



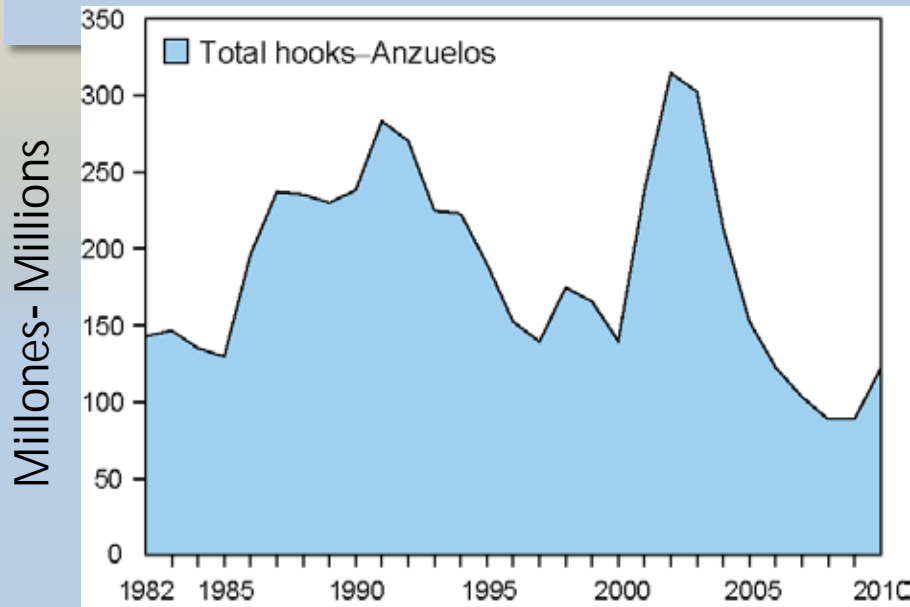
Pesquería y de la población Fishery and Stock



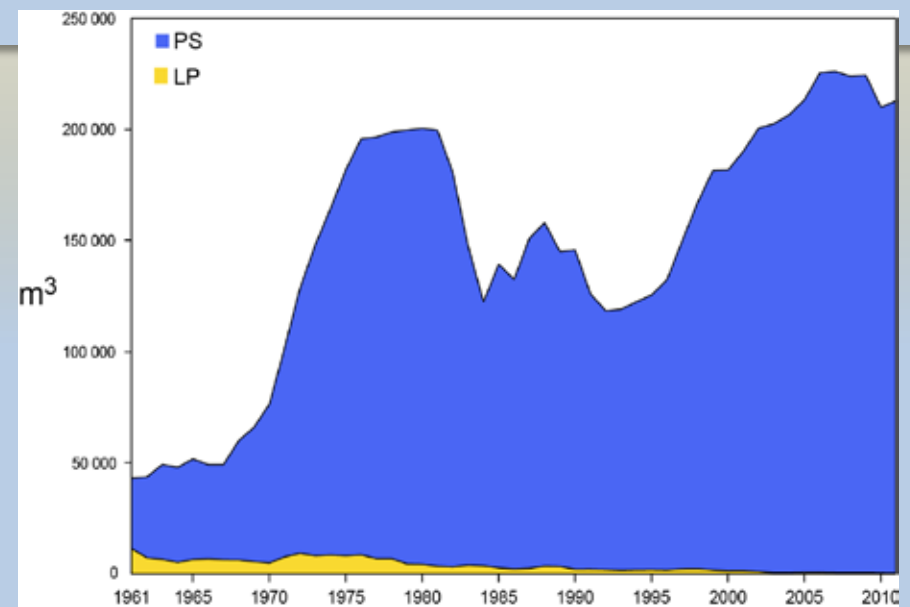
83^a Reunión de la CIAT
83rd Meeting of the IATTC

83rd Meeting of the IATTC

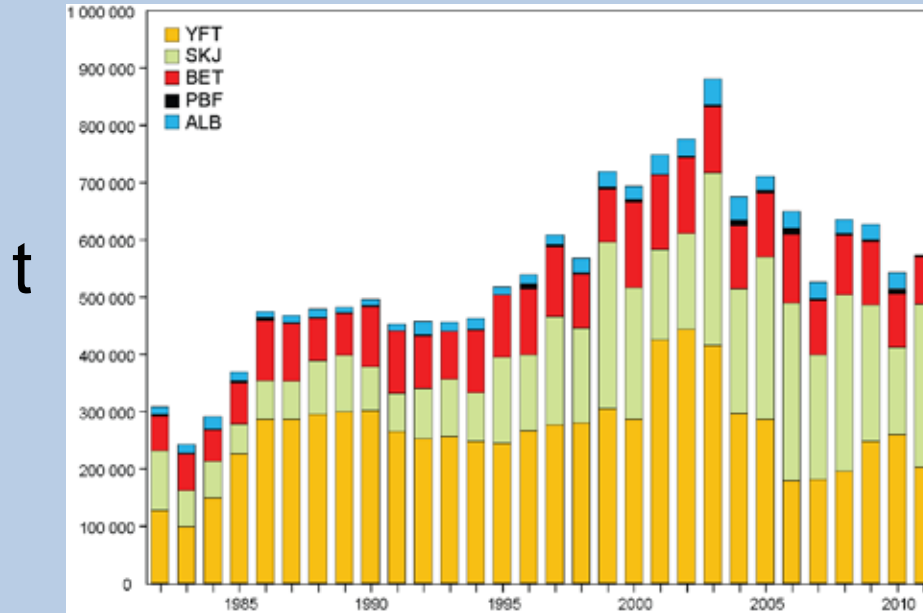
LL Anzuelos- Hooks



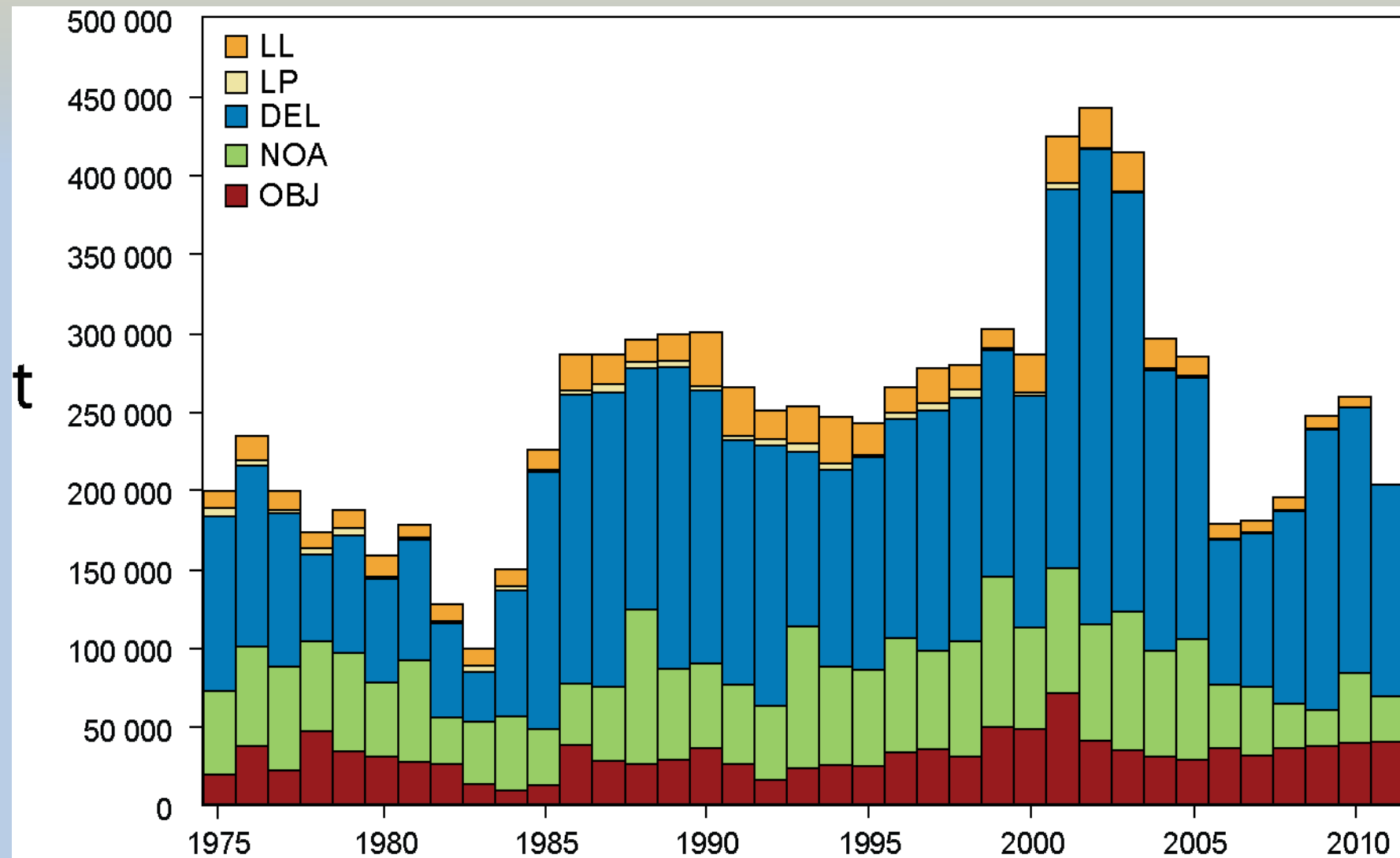
Capacidad de flota- Fleet capacity



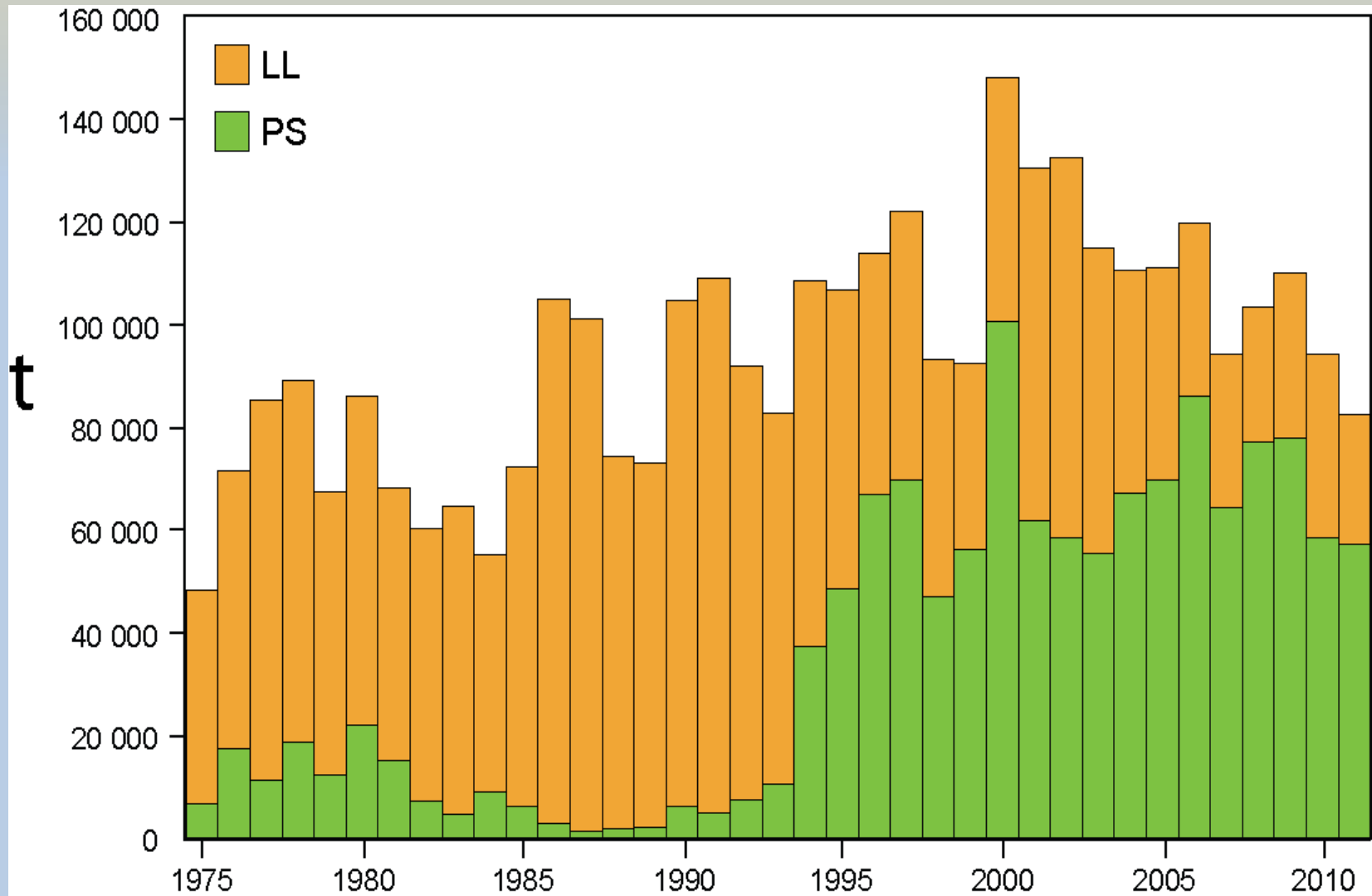
Captura por especies- Catches by species



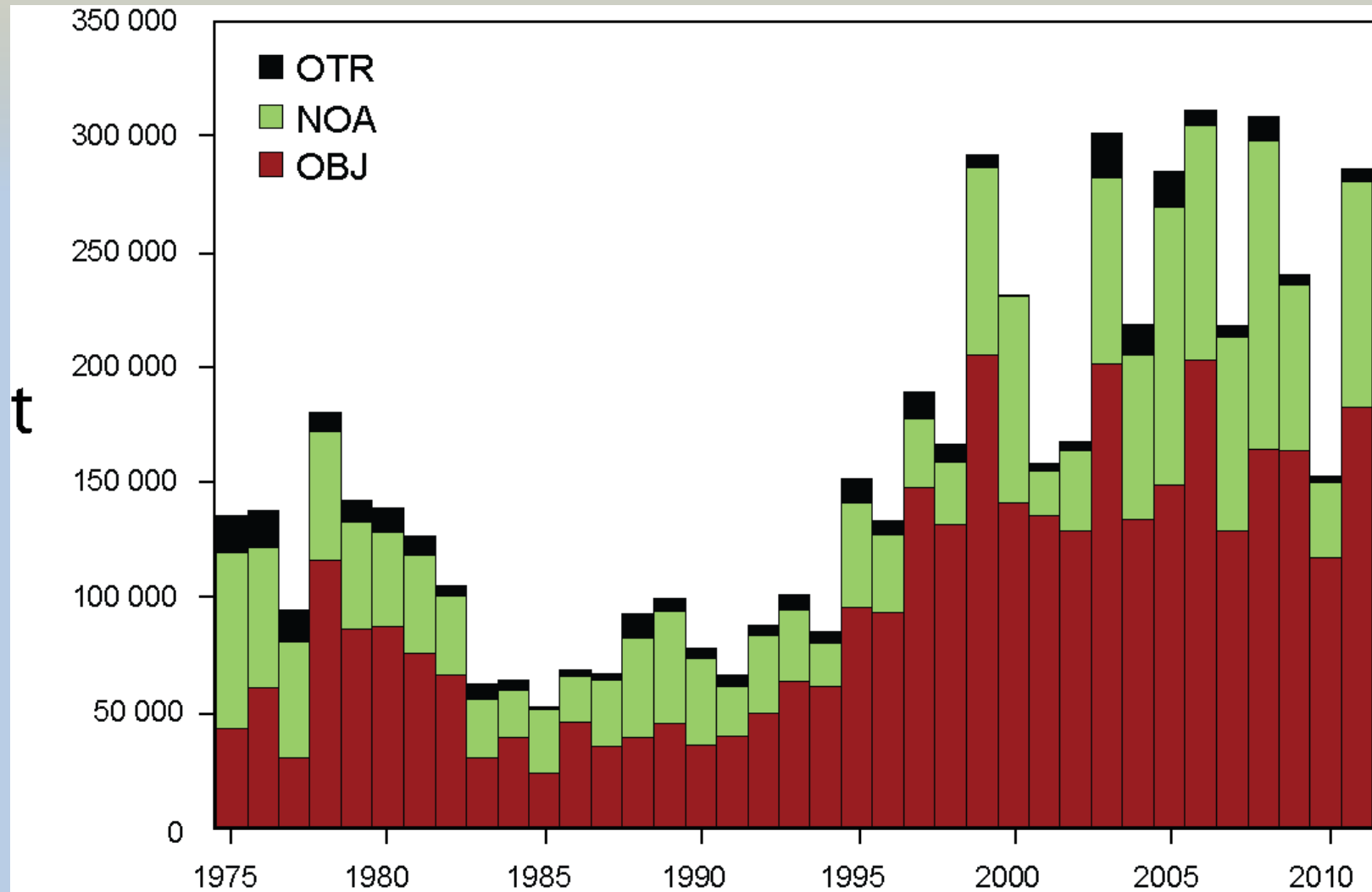
YFT - Captura por arte - YFT - Catch by gear type



BET - Captura por arte - BET - Catch by gear type



SKJ - Captura por arte - SKJ - Catch by gear type

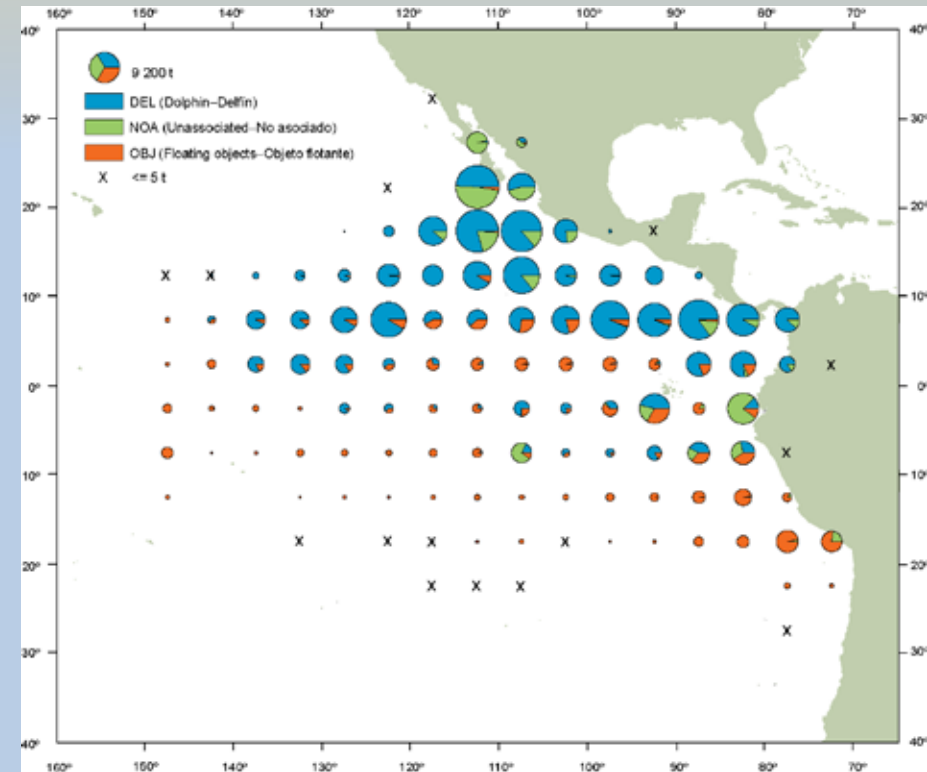
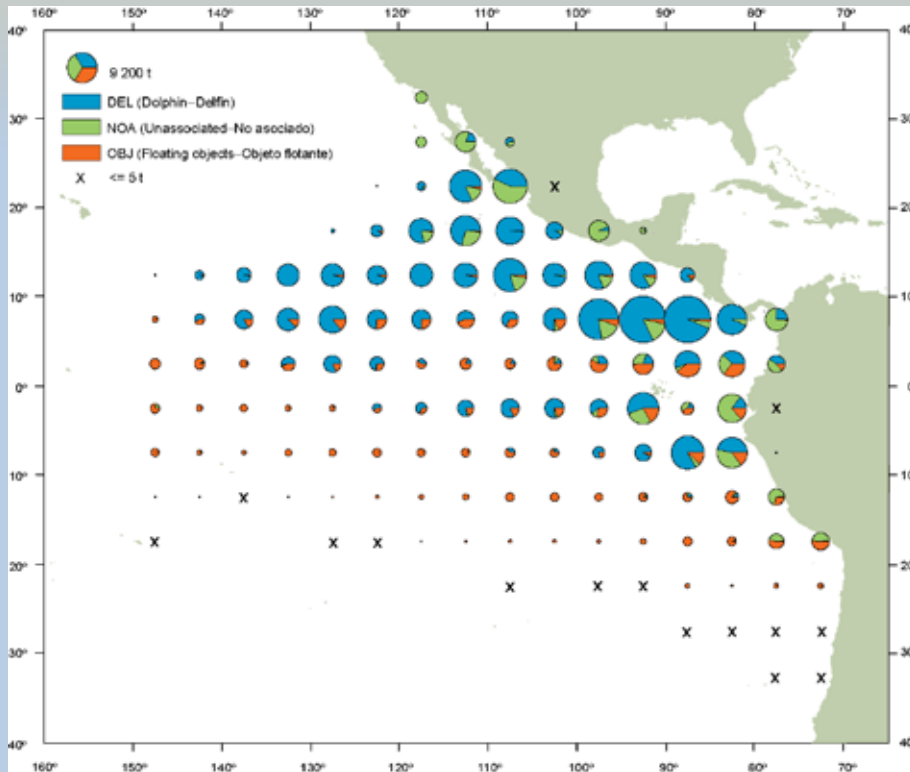


YFT - Distribución de las capturas de cerqueros

YFT - Distribution of purse-seine catches

Promedio- Average 2006-2010

2011



201 000 mt

202 000 mt

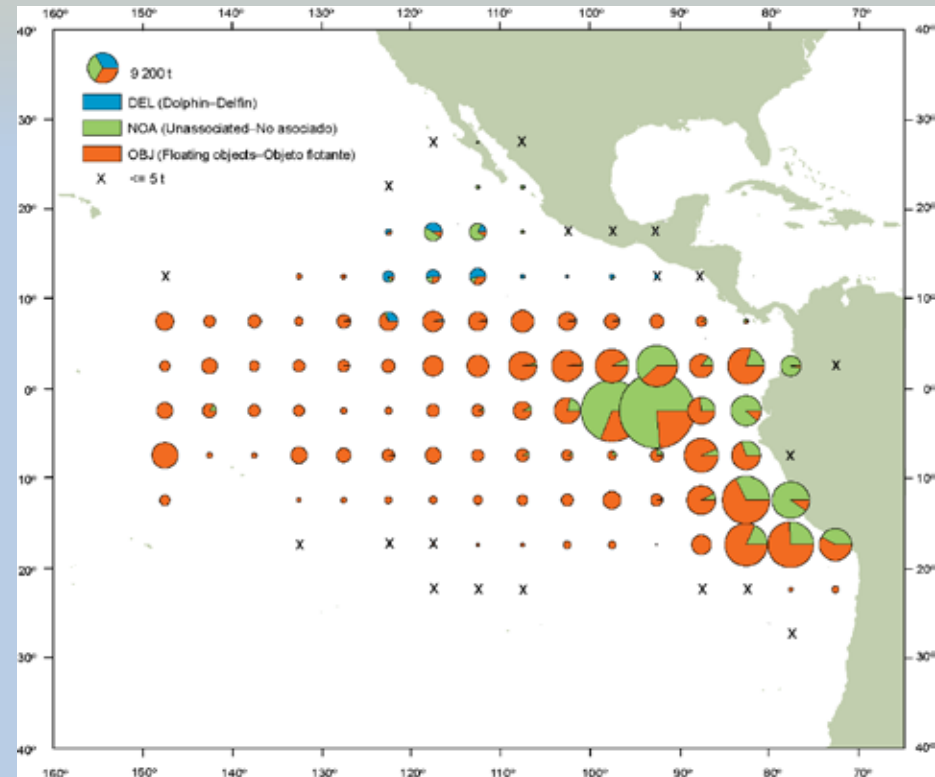
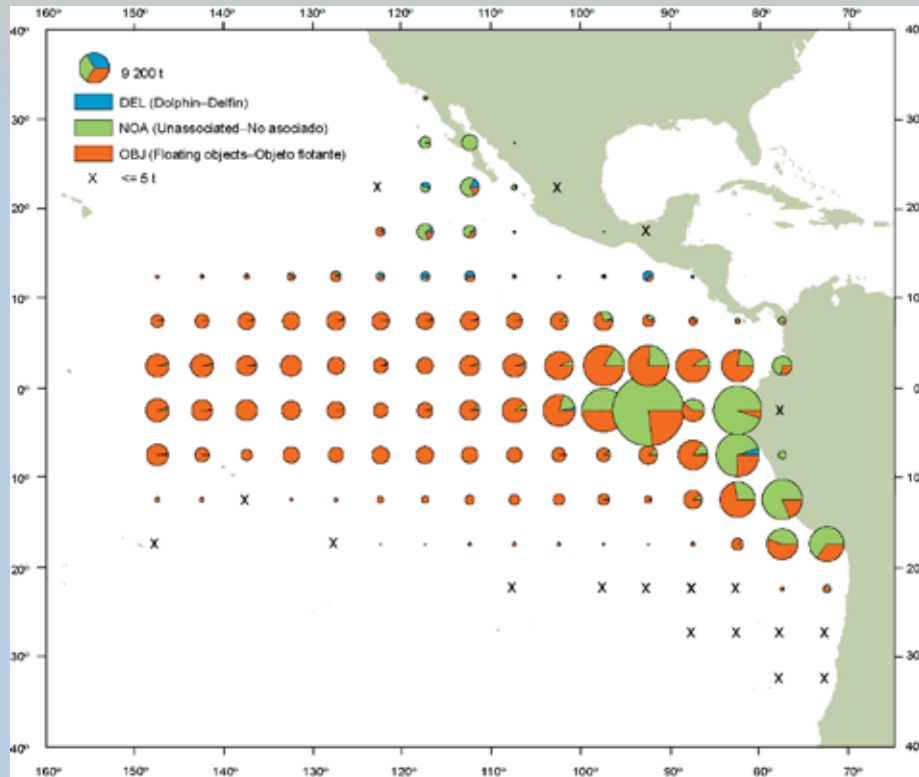
(167 000 to 251 000)

SKJ - Distribución de las capturas de cerqueros

SKJ - Distribution of purse-seine catches

Promedio- Average 2006-2010

2011



236 000 mt

284 000 mt

(147 000 to 297 000)

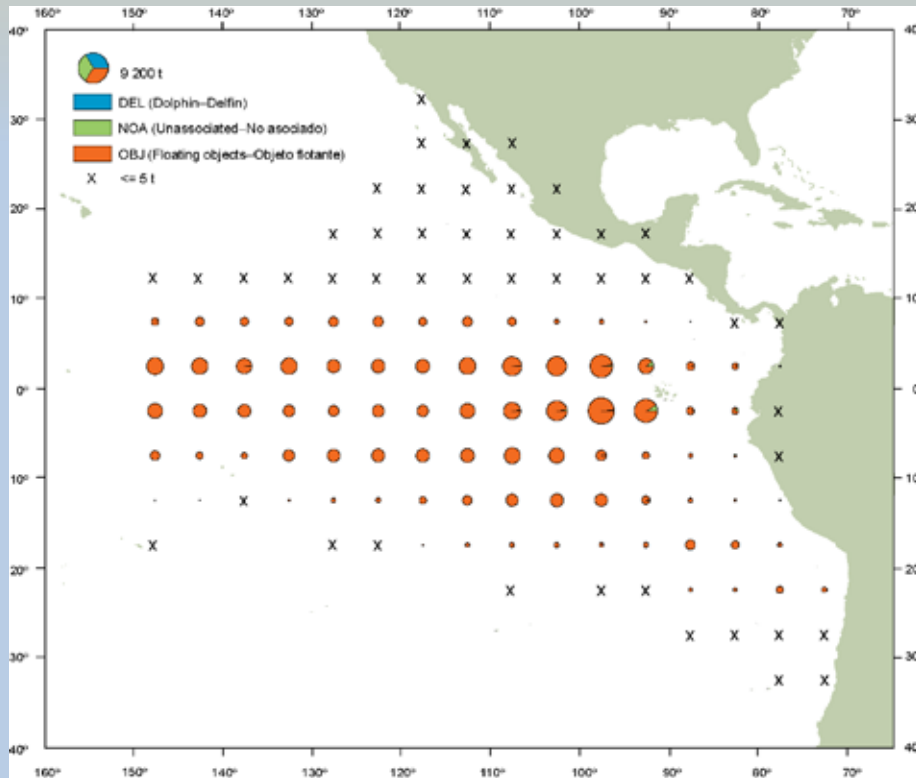
20% Higher-Mayor

BET - Distribución de las capturas de cerqueros

BET - Distribution of purse-seine catches

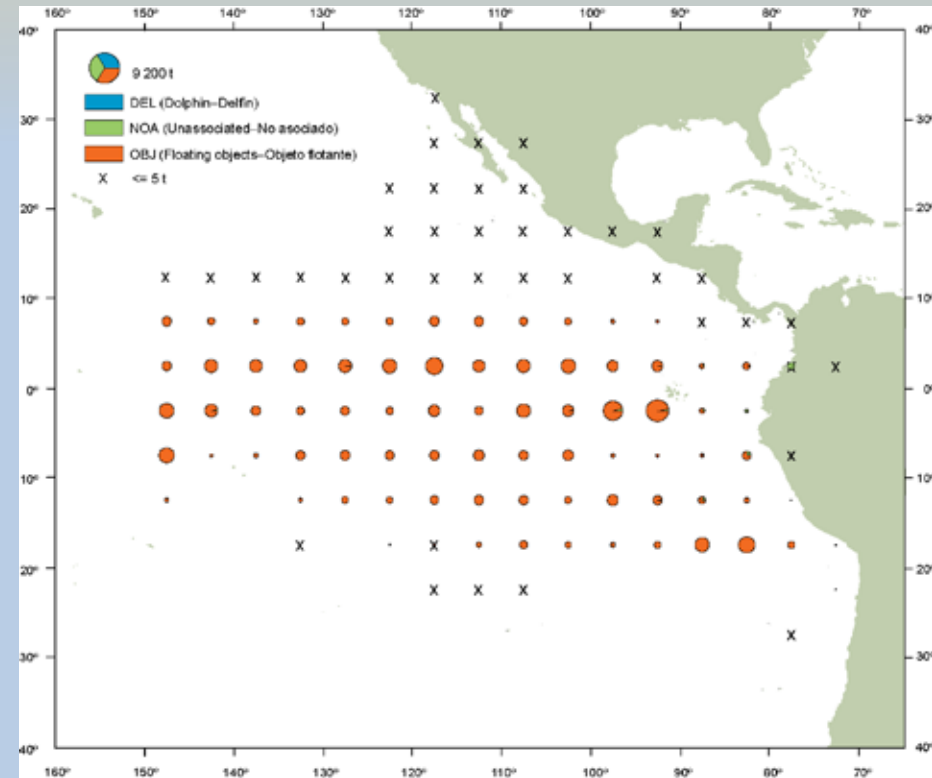
Promedio- Average 2006-2010

2011



71 000 mt

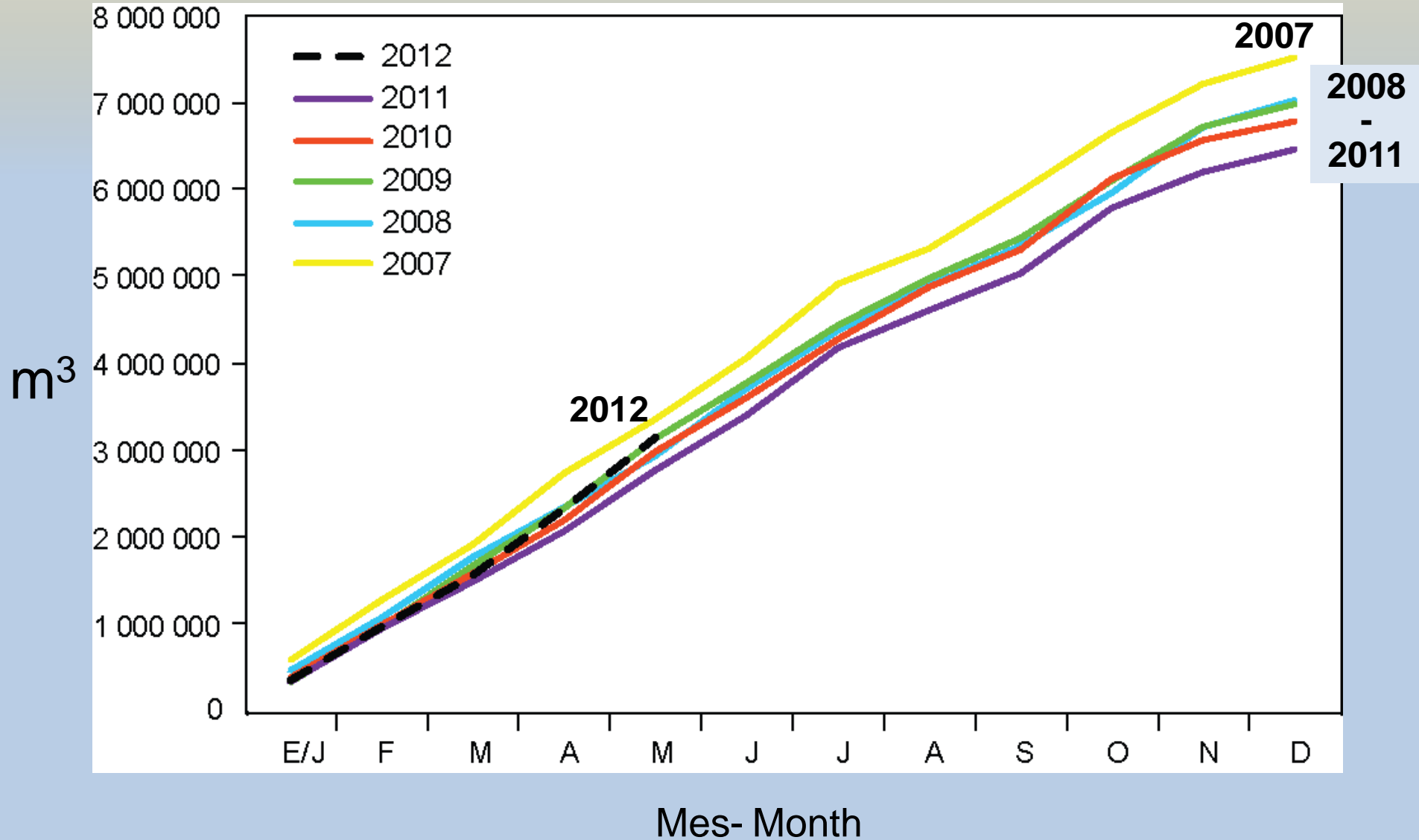
(63 000 to 84 000)



57 000 mt

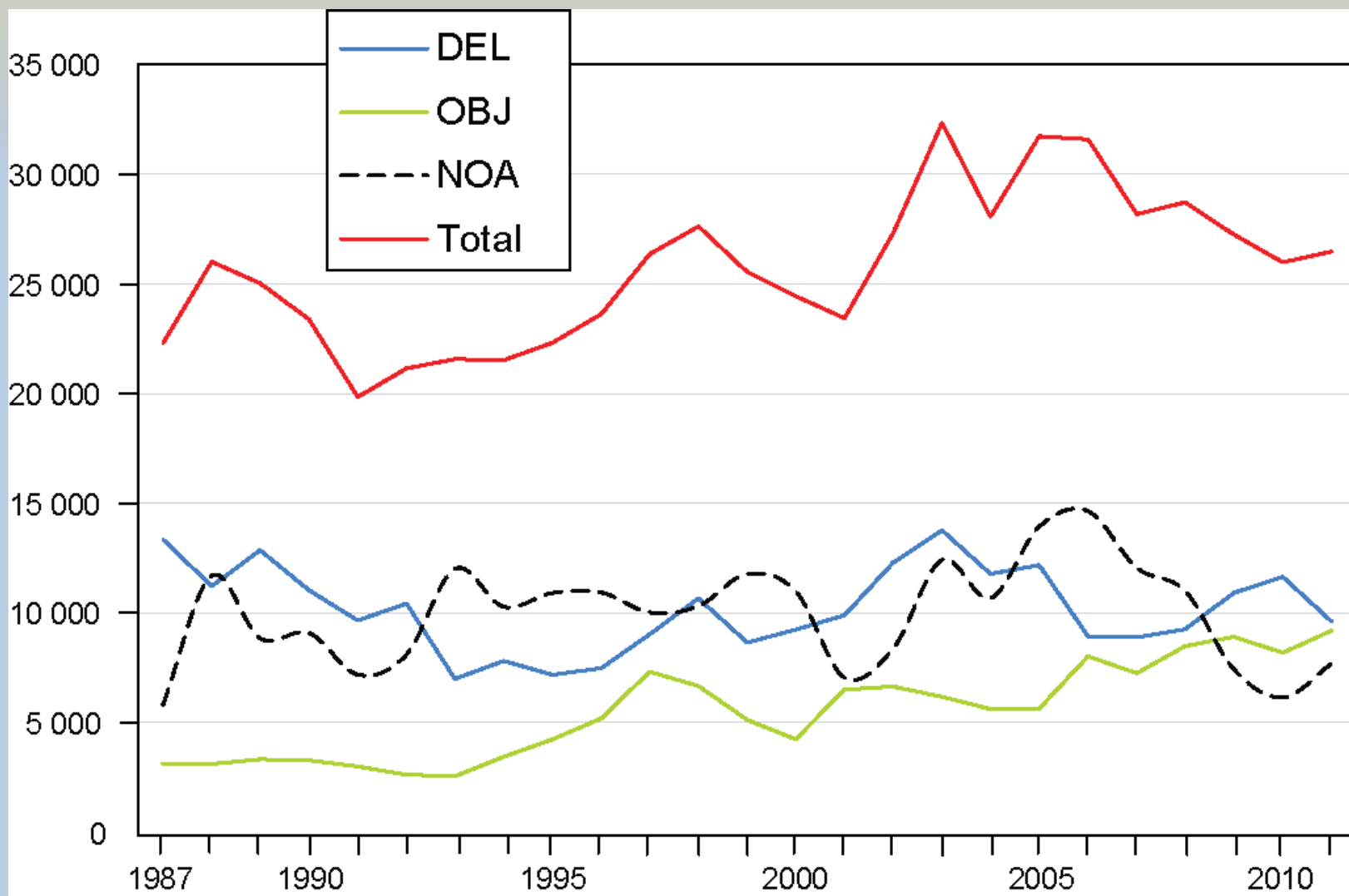
20% Lower- Menor

Capacidad acumulativa en el mar - Cumulative capacity at sea

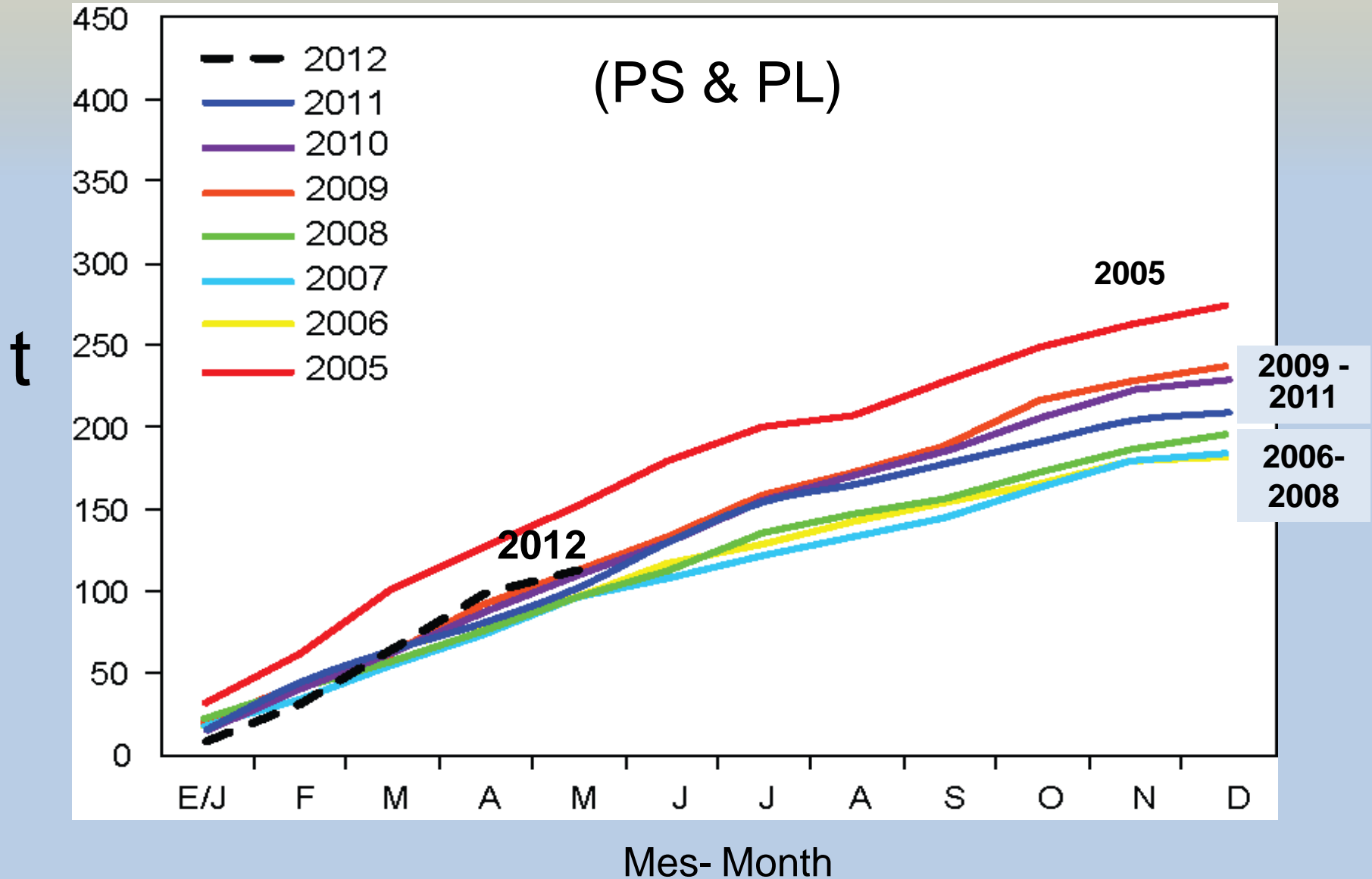


Números estimados de lances, por tipo de lance

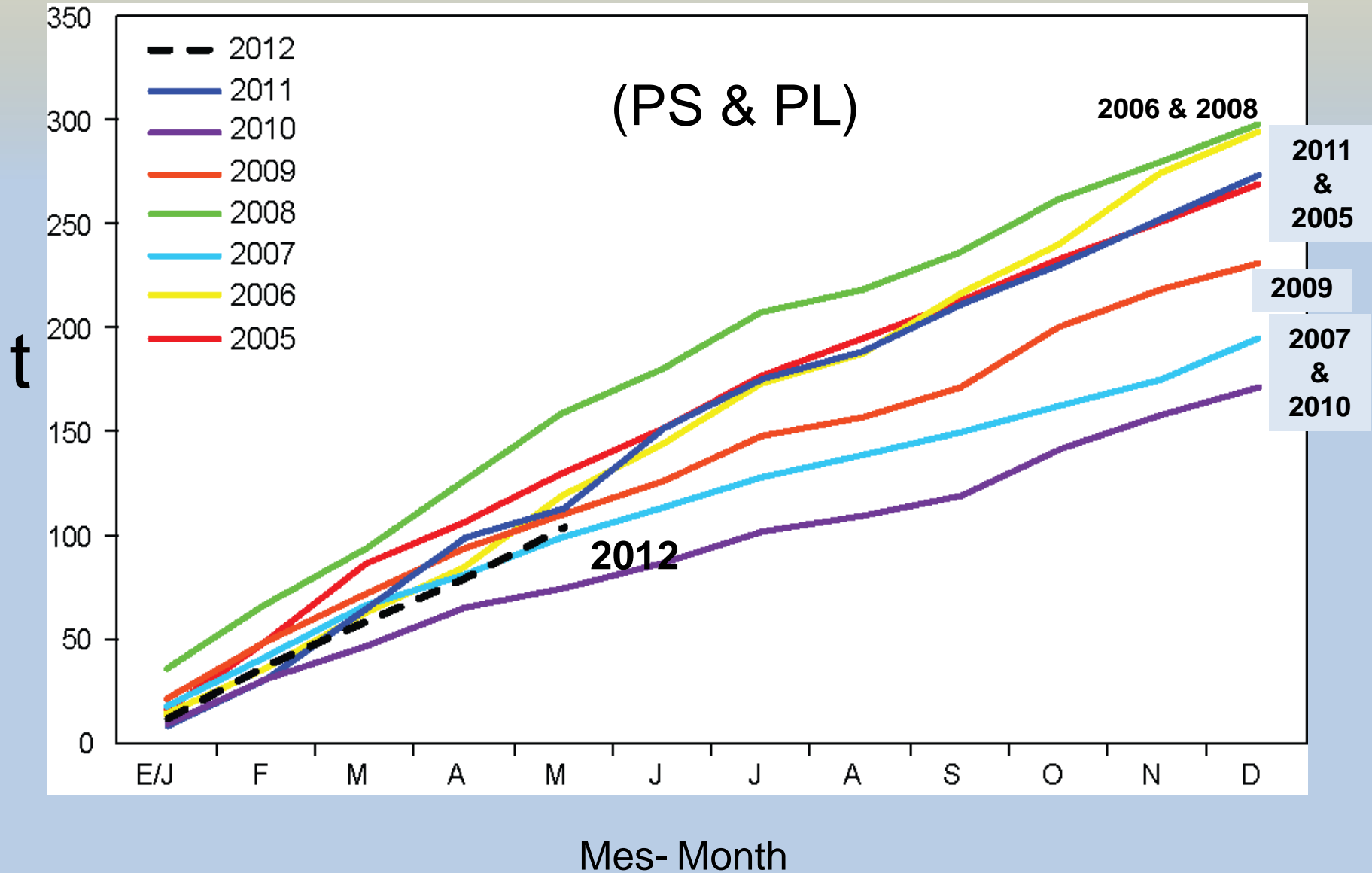
Estimated numbers of sets, by set type



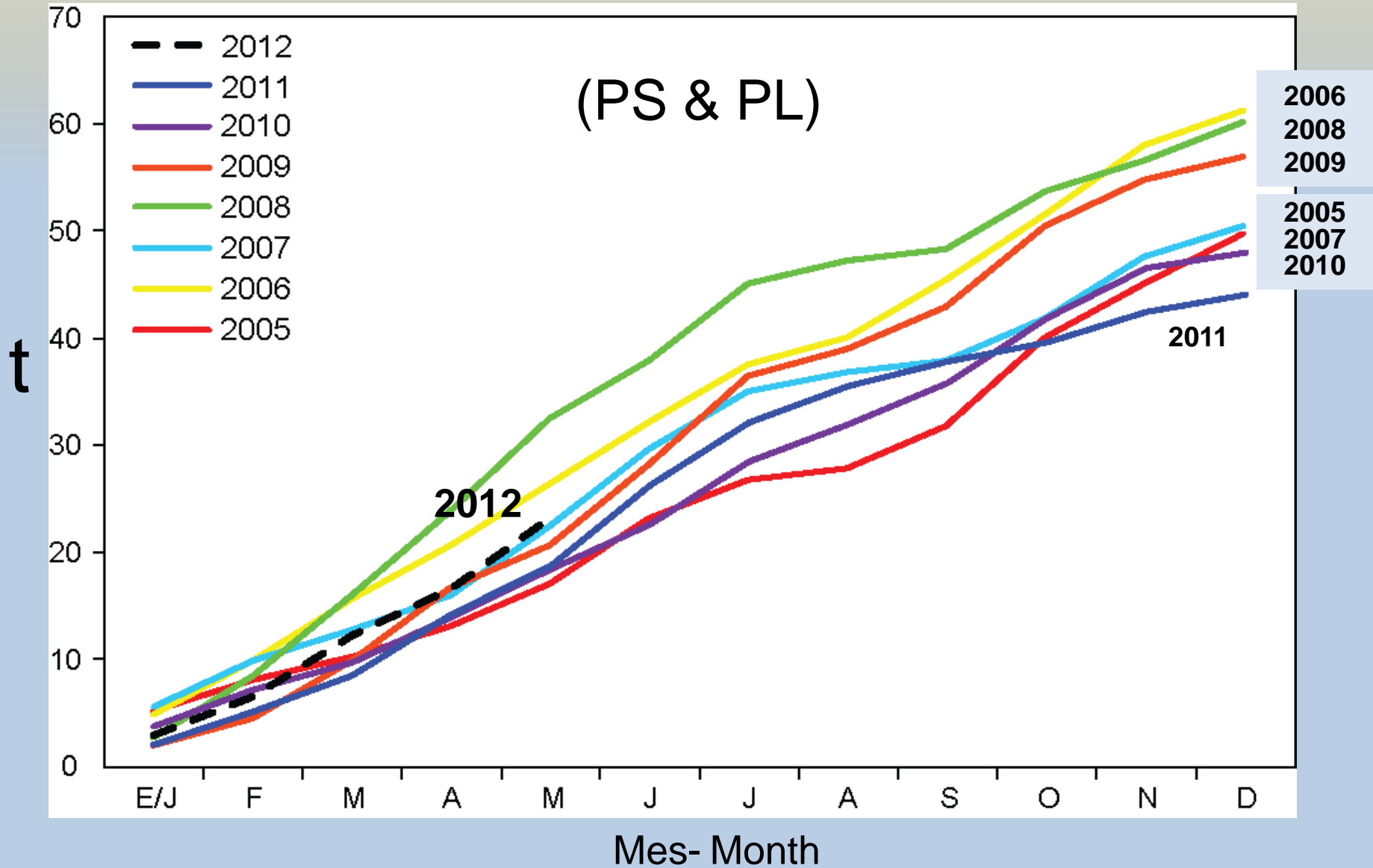
Captura acumulativa de YFT - Cumulative catch of YFT



Captura acumulativa de SKJ - Cumulative catch of SKJ

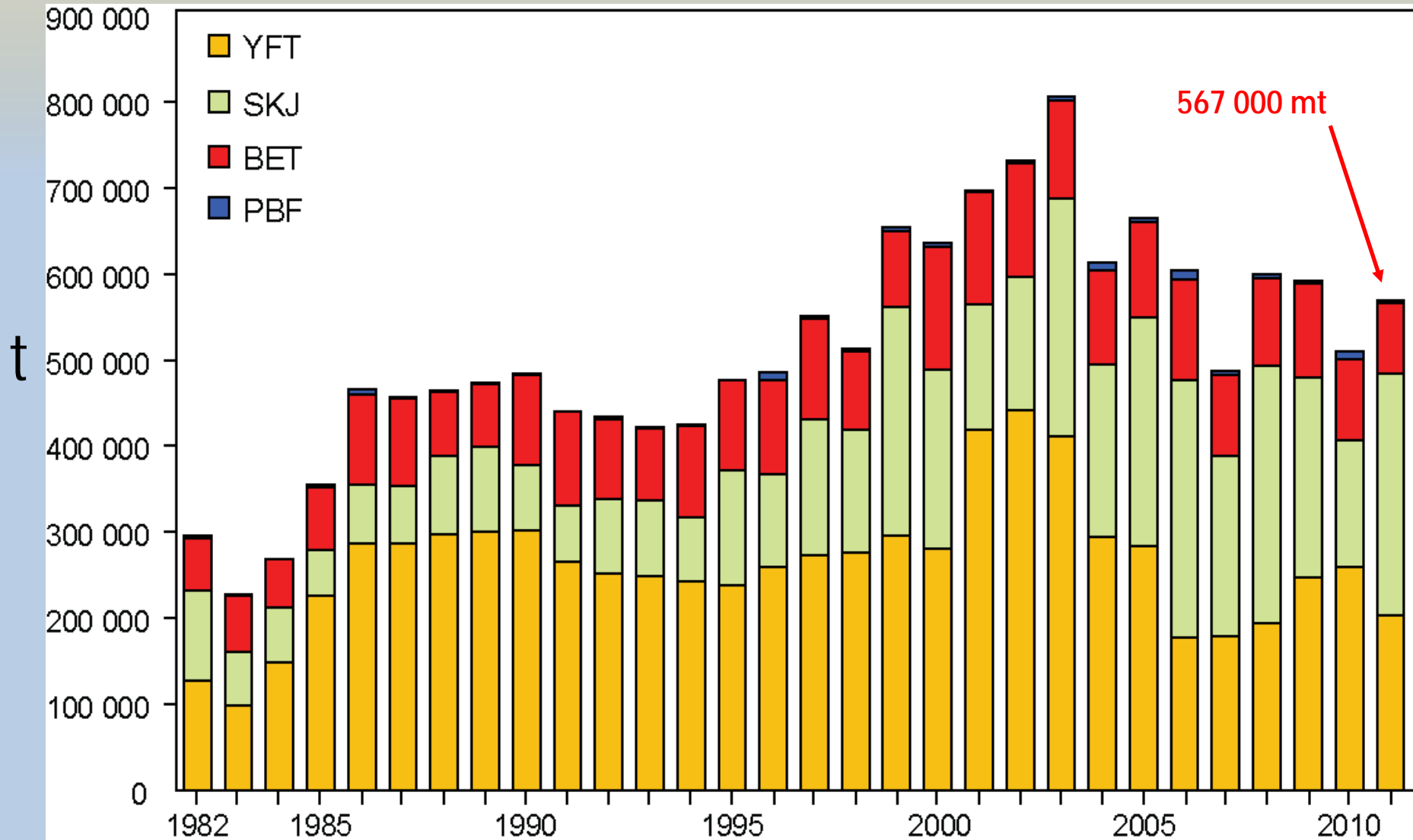


Captura acumulativa de BET - Cumulative catch of BET



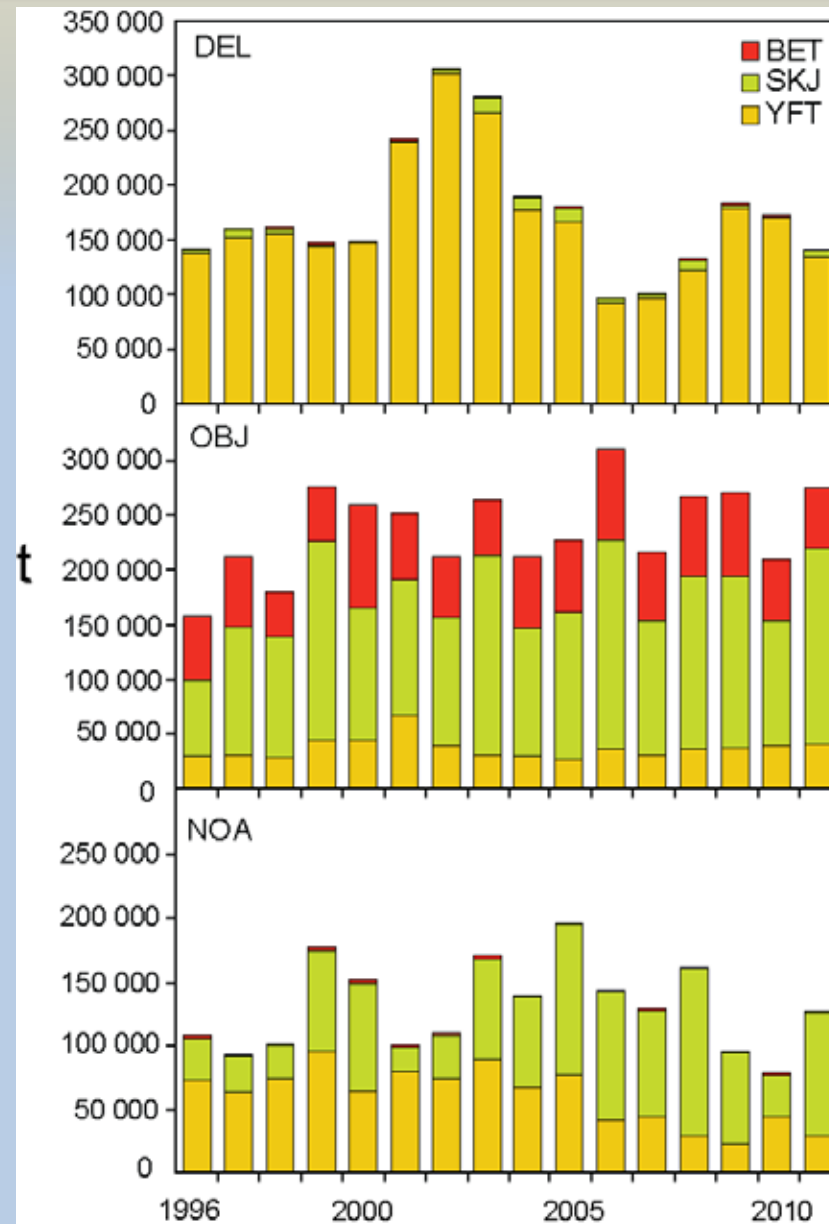
OPO PS, LP, RG, y LL capturas por especies

EPO PS, LP, RG, and LL catches by species

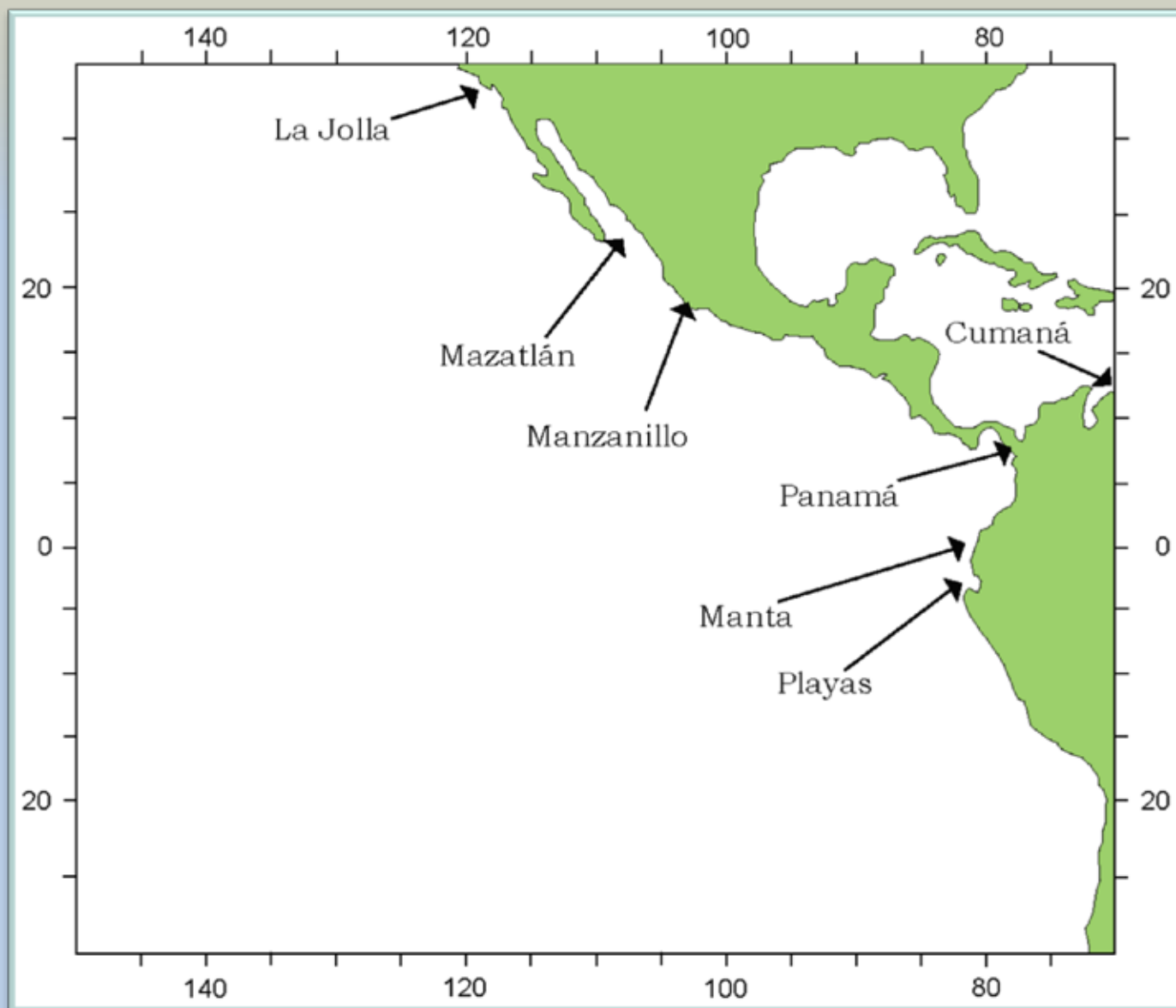


Capturas cerqueras de atunes, por especie y tipo de lance, 1996-2011

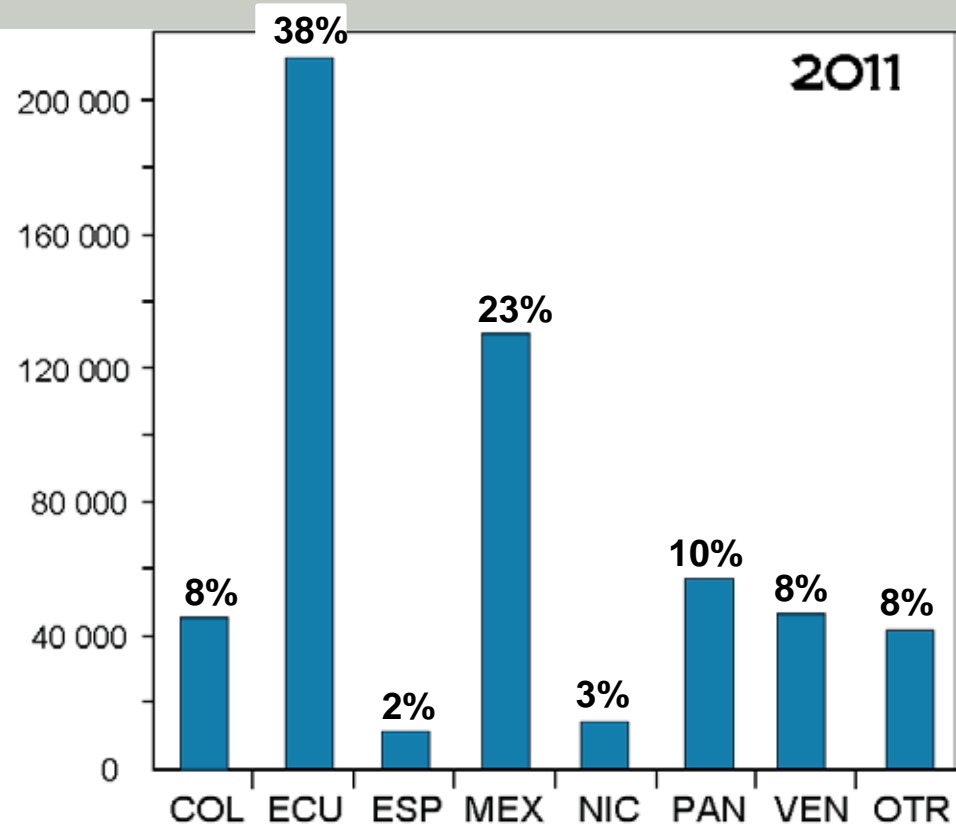
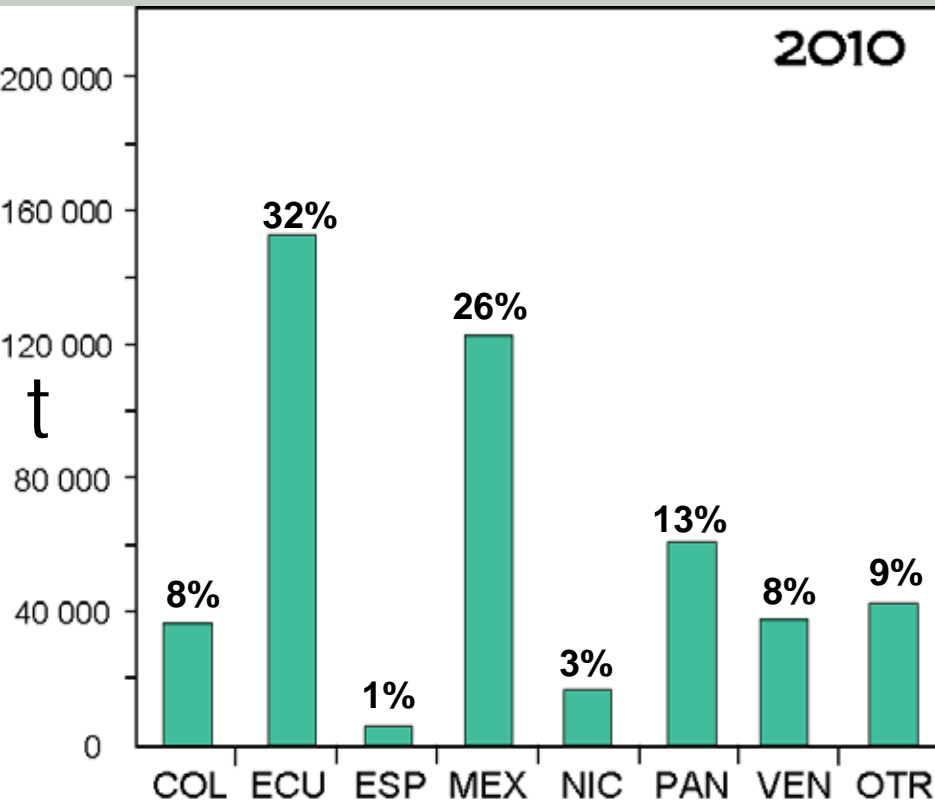
Purse-seine catches of tunas, by species and set type, 1996-2011



CIAT oficinas de campo-IATTC field offices



OPO PS/LP/RG capturas por país
 EPO PS/LP/RG fleet tuna catches by country



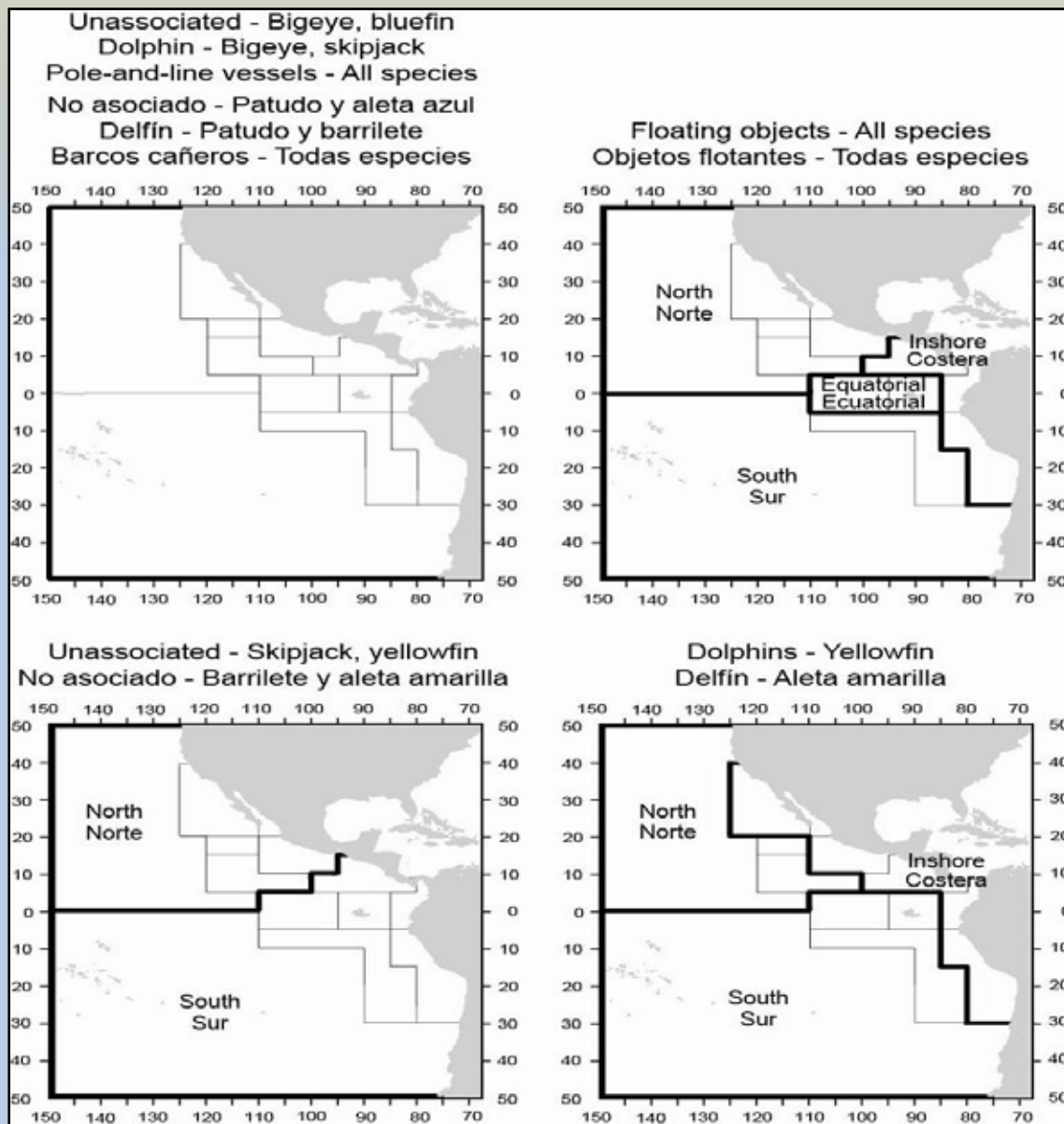
Banderas- Flag

Total captura- catch
 473 601 mt

Total captura- catch
 551 587 mt

Pesquerías definidas para la evaluación de las poblaciones

Fisheries defined by the stock assessment



Aleta amarilla
Yellowfin

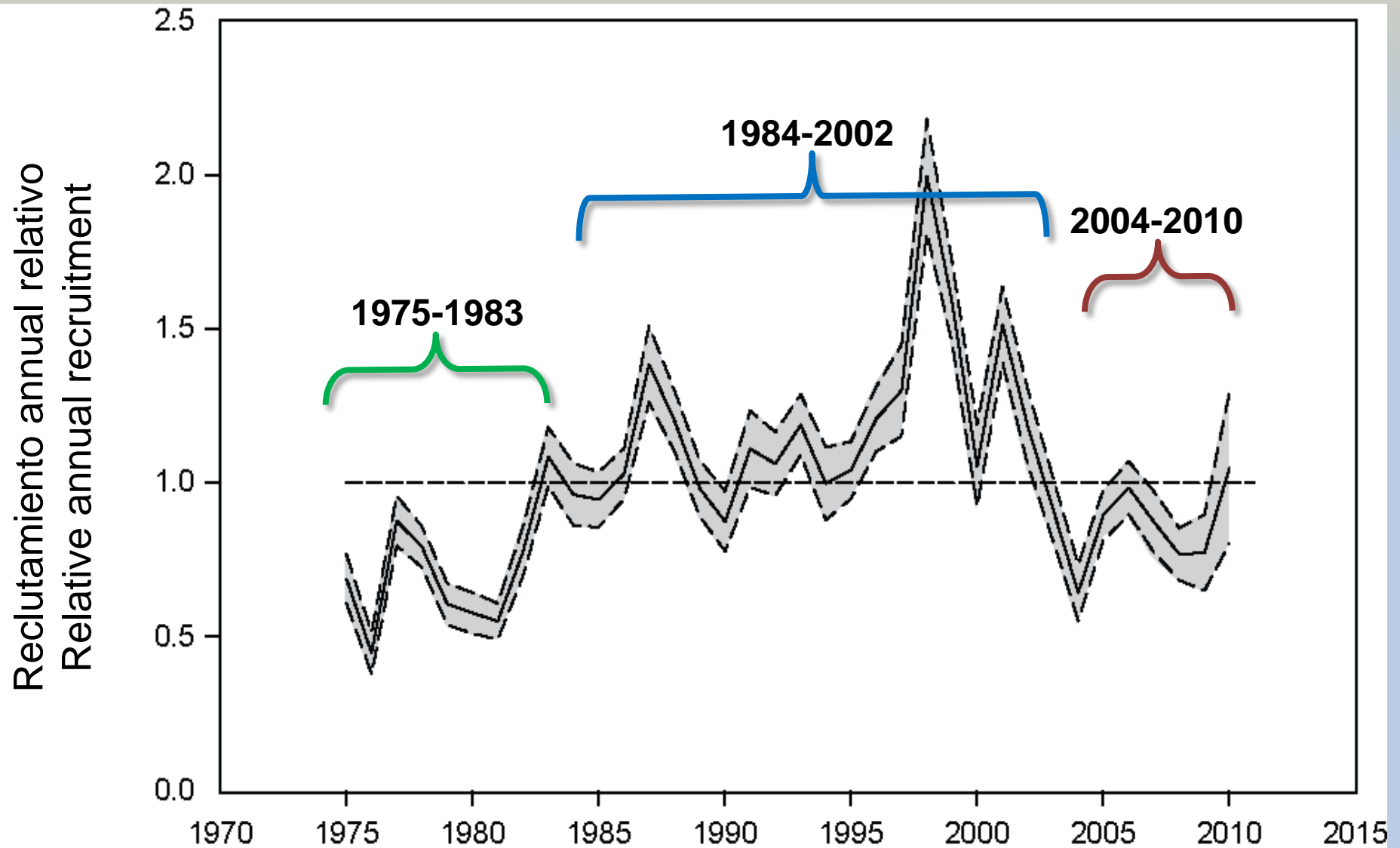


CIAT

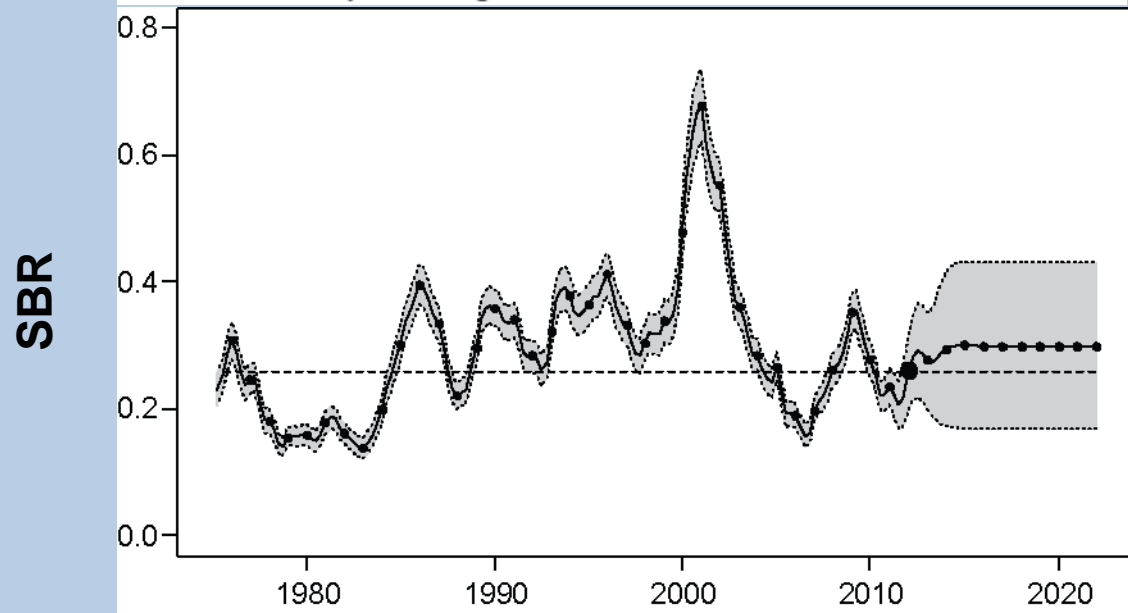
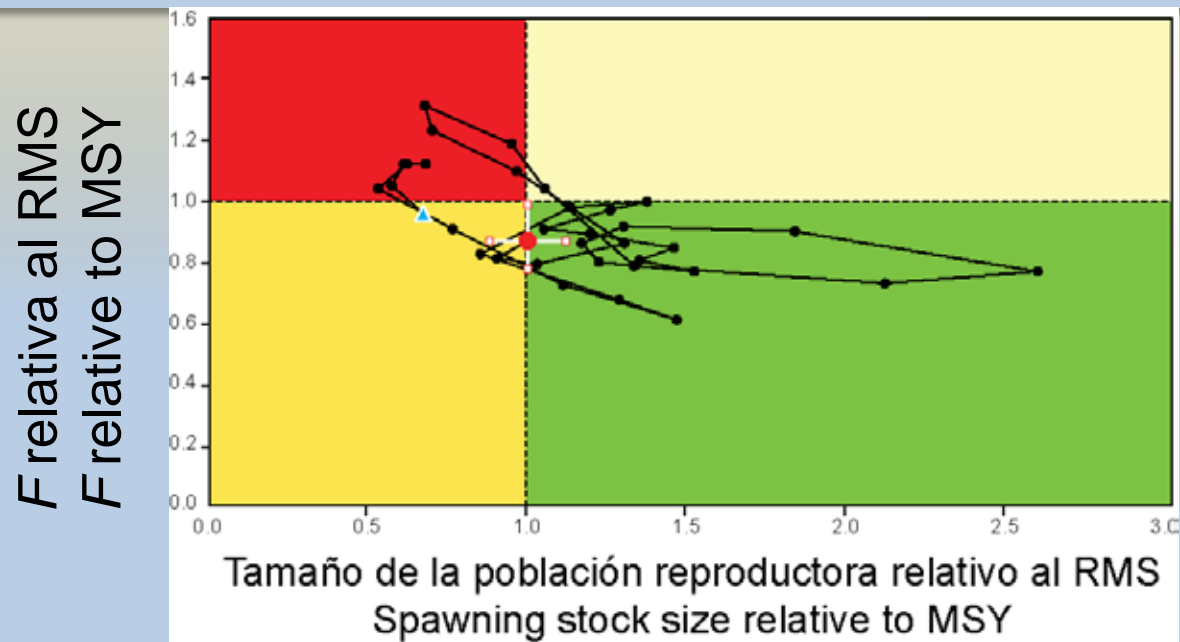
IATTC



YFT Reclutamiento - YFT Recruitment



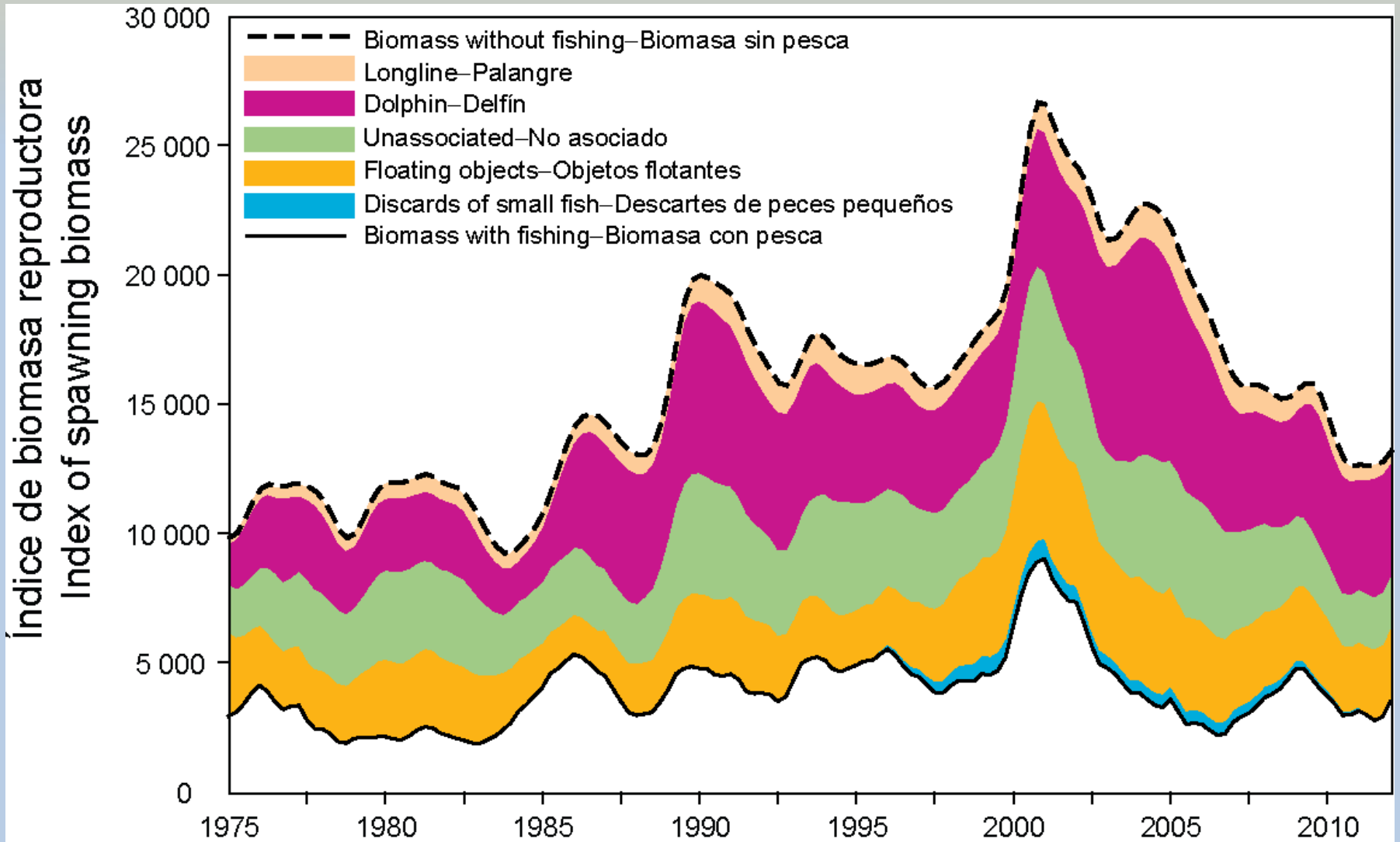
Aleta amarilla - Yellowfin



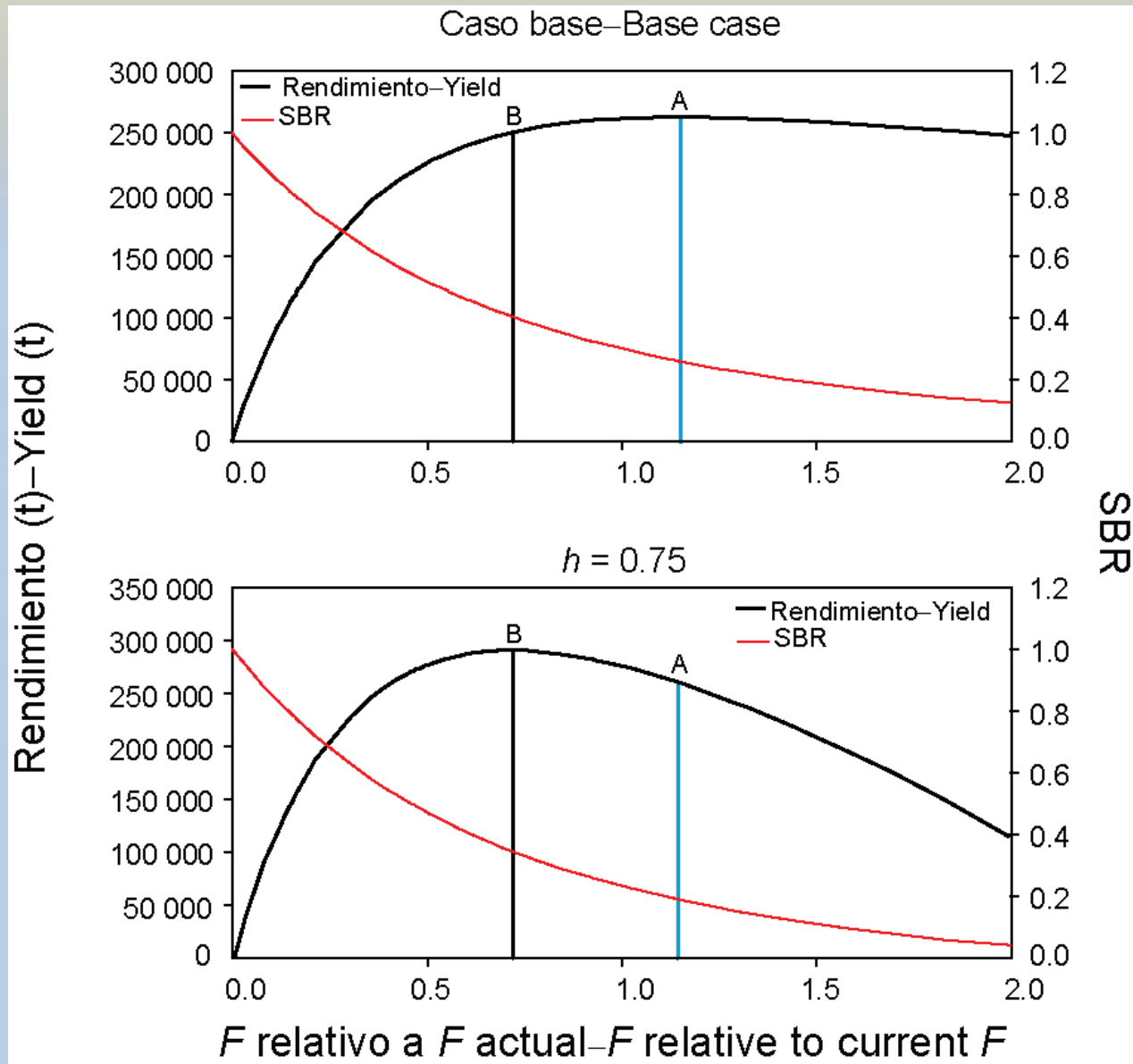
RMS – cantidades - MSY – quantities

	Caso base Base case	$h = 0.75$
RMS–MSY(t)	262 642	290 680
$C_{\text{reciente}}/\text{RMS} — C_{\text{recent}}/\text{MSY}$	0.79	0.71
$S_{\text{reciente}}/S_{\text{RMS}} — S_{\text{recent}}/S_{\text{MSY}}$	1.00	0.56
Multiplicador de F F multiplier	1.15	0.72

YFT Biomasa - YFT Biomass

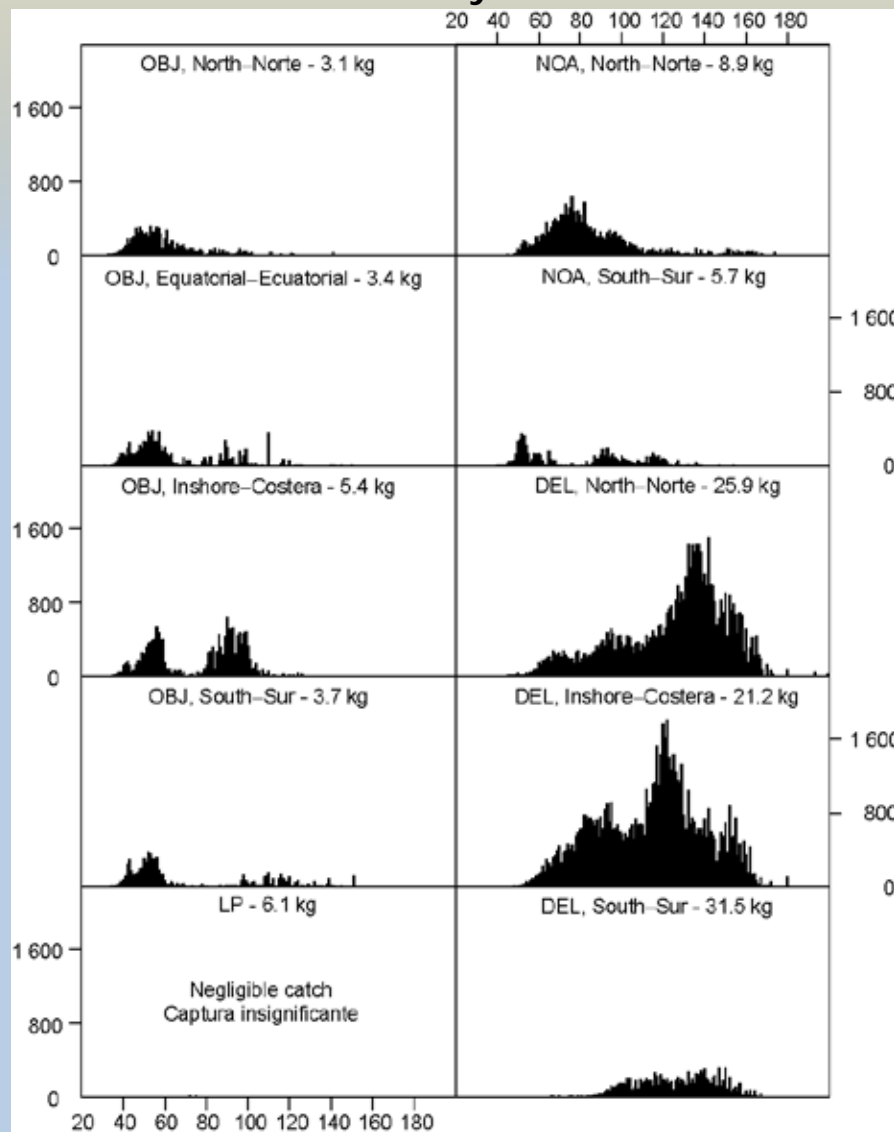


YFT - Rendimiento sostenible - YFT - Sustainable yield

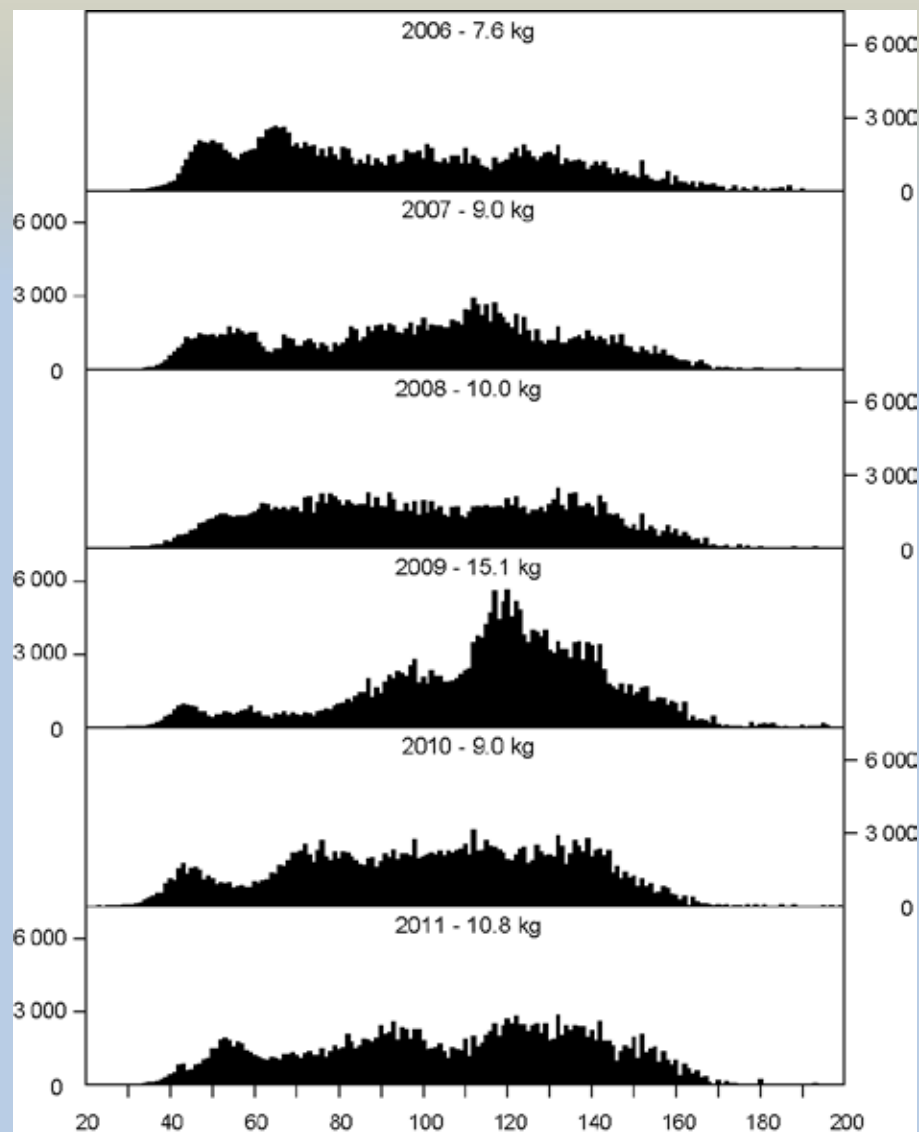


YFT - Composición por tallas–Size compositions

2011 by Area



2006 - 2011



Length (cm)- Talla (cm)

PATUDO BIGEYE



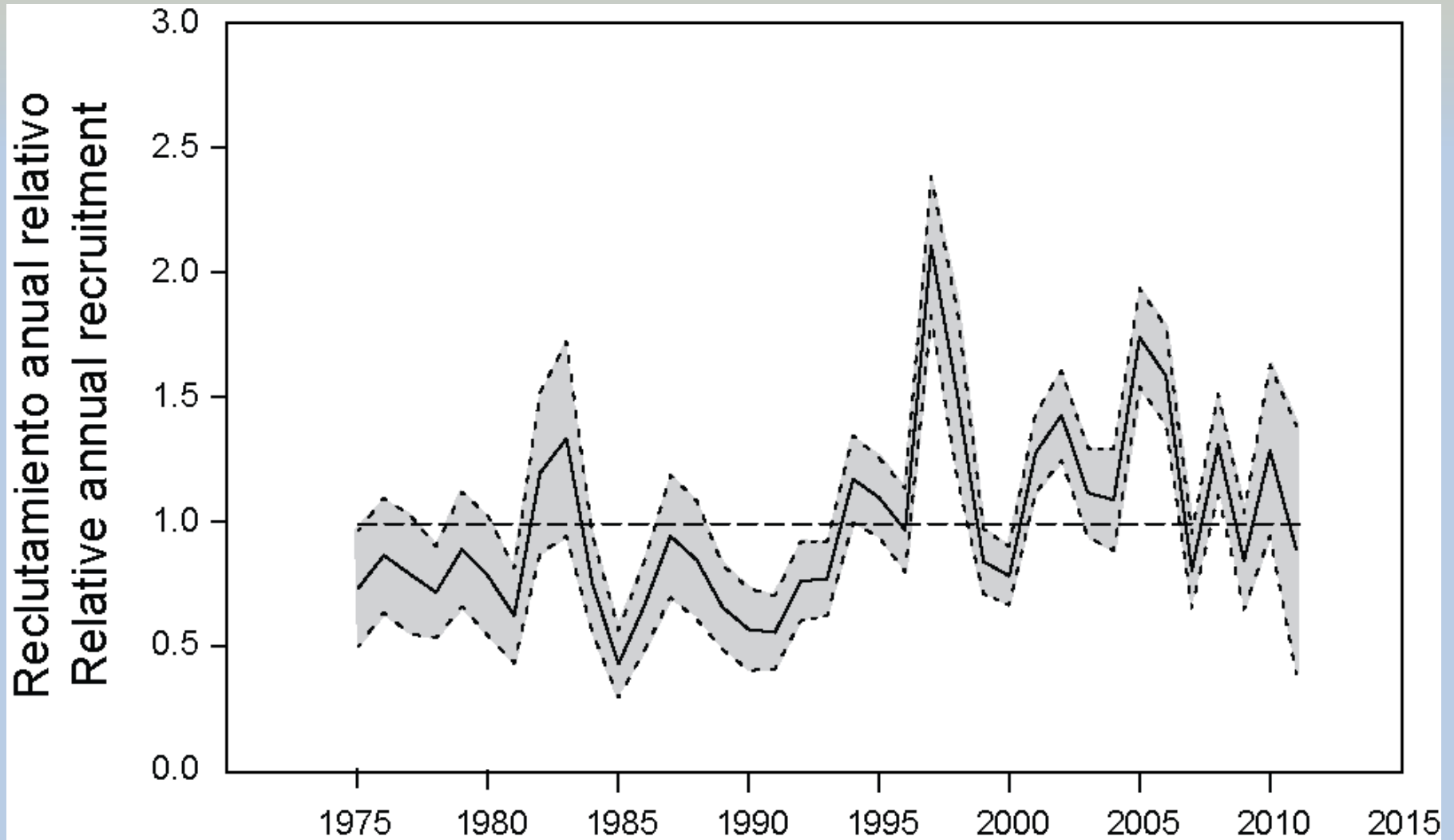
CIAT
IATTC



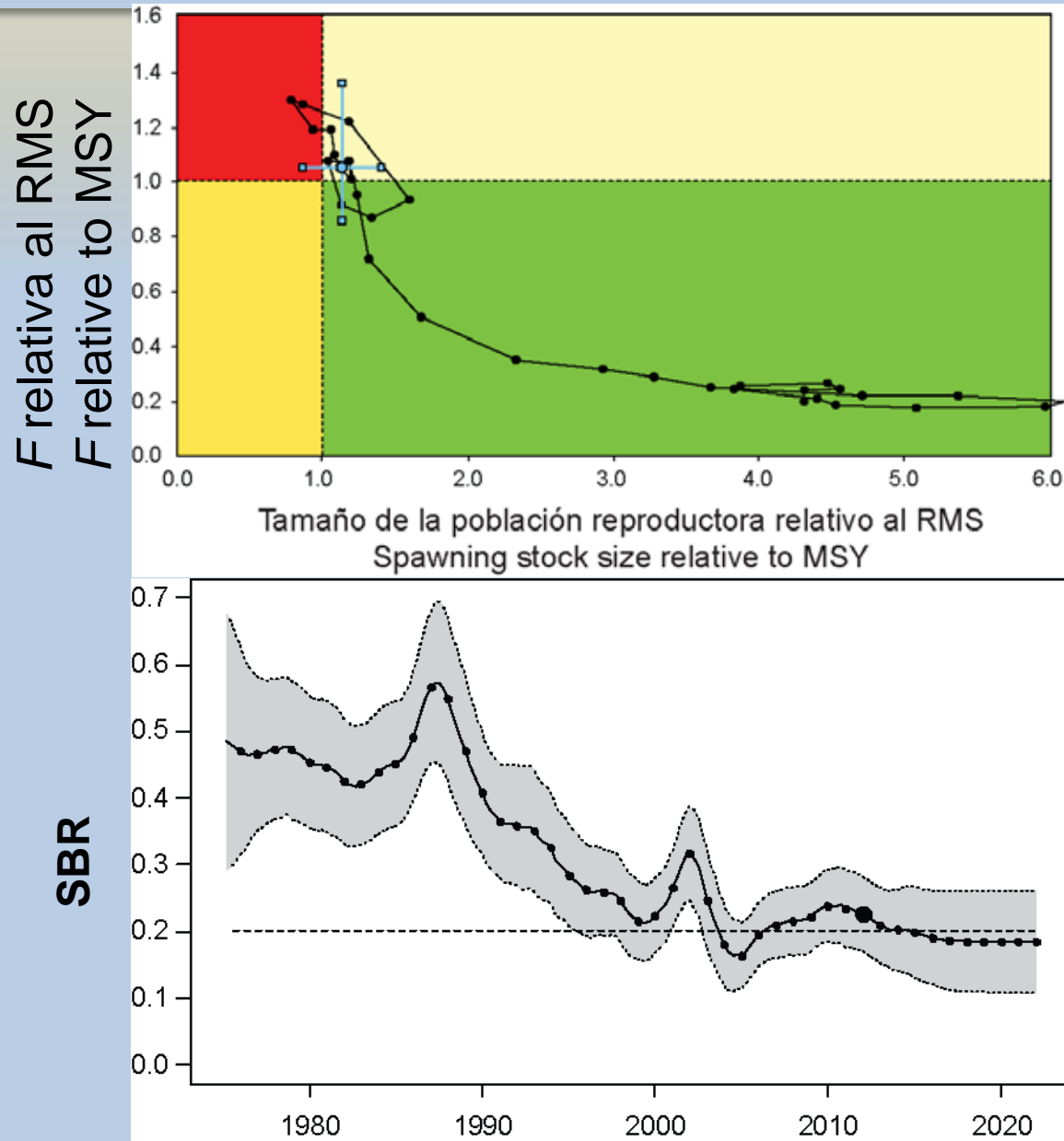
CIAT
IATTC



BET Reclutamiento - BET Recruitment



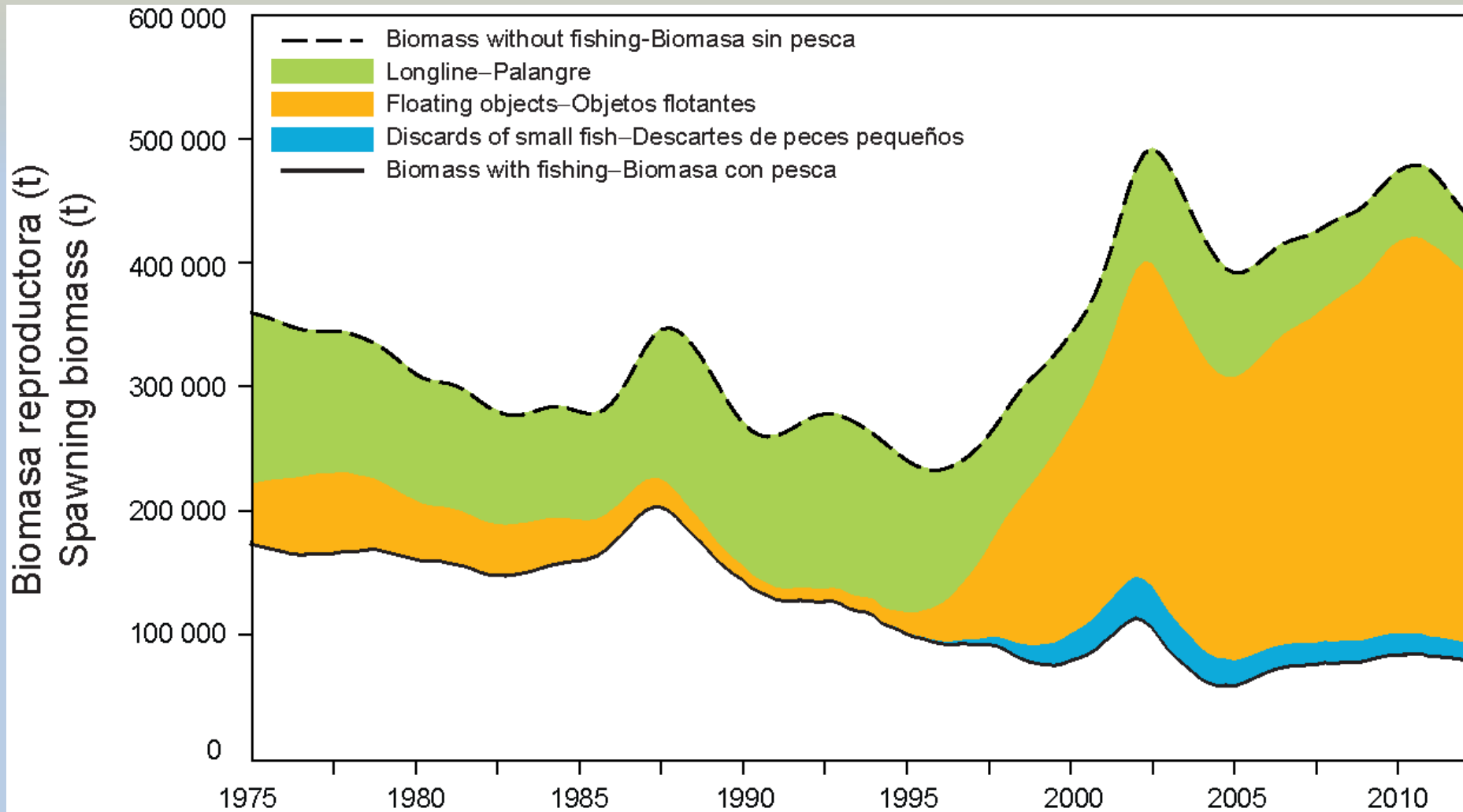
Atún Patudo - Bigeye tuna



RMS – Cantidades - MSY – Quantities

	Caso base Base case	<i>h</i> = 0.75
RMS–MSY(t)	82 246	78 879
$C_{\text{reciente}}/\text{RMS} - C_{\text{recent}}/\text{MSY}$	0.92	0.96
$S_{\text{reciente}}/S_{\text{RMS}} - S_{\text{recent}}/S_{\text{MSY}}$	1.12	0.77
Multiplicador de <i>F</i> - <i>F</i> multiplier	0.95	0.70

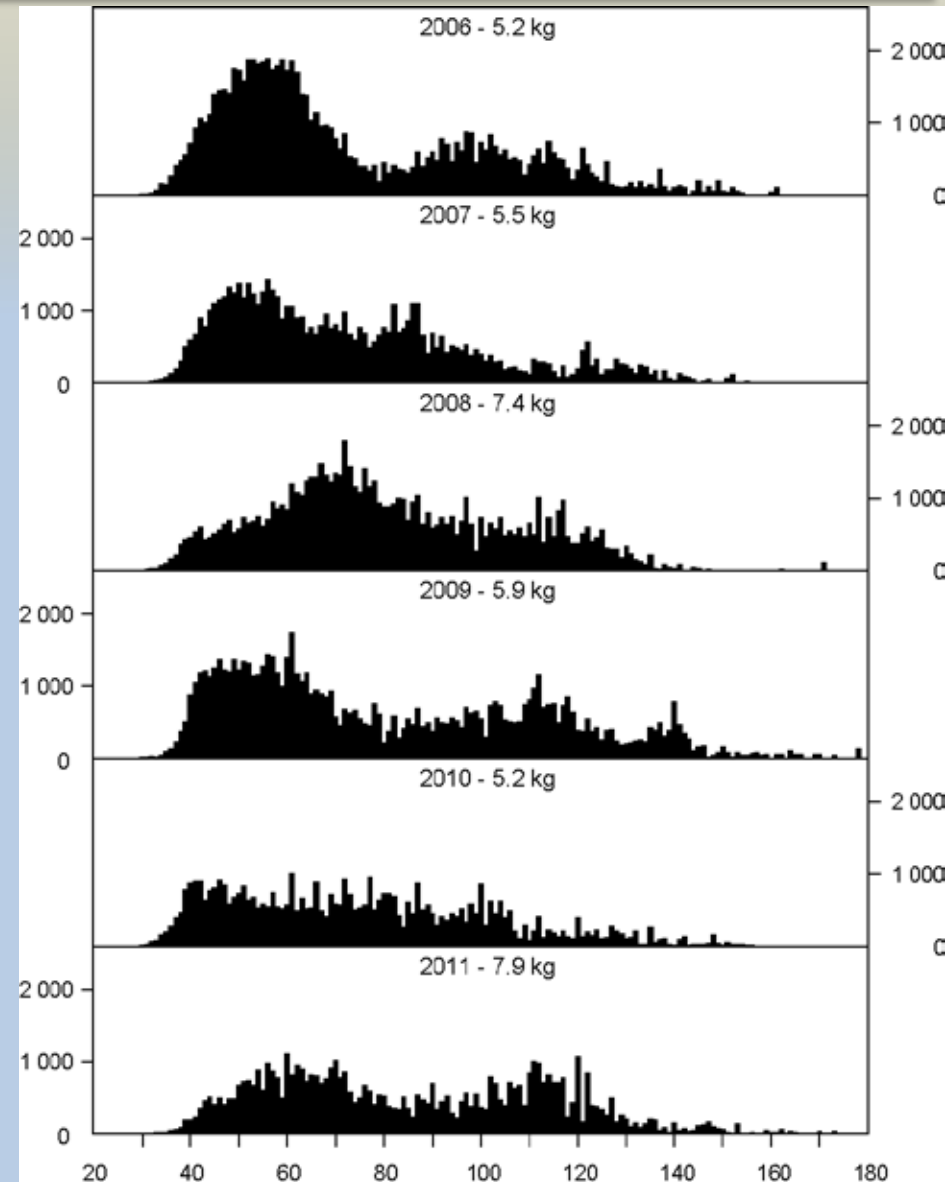
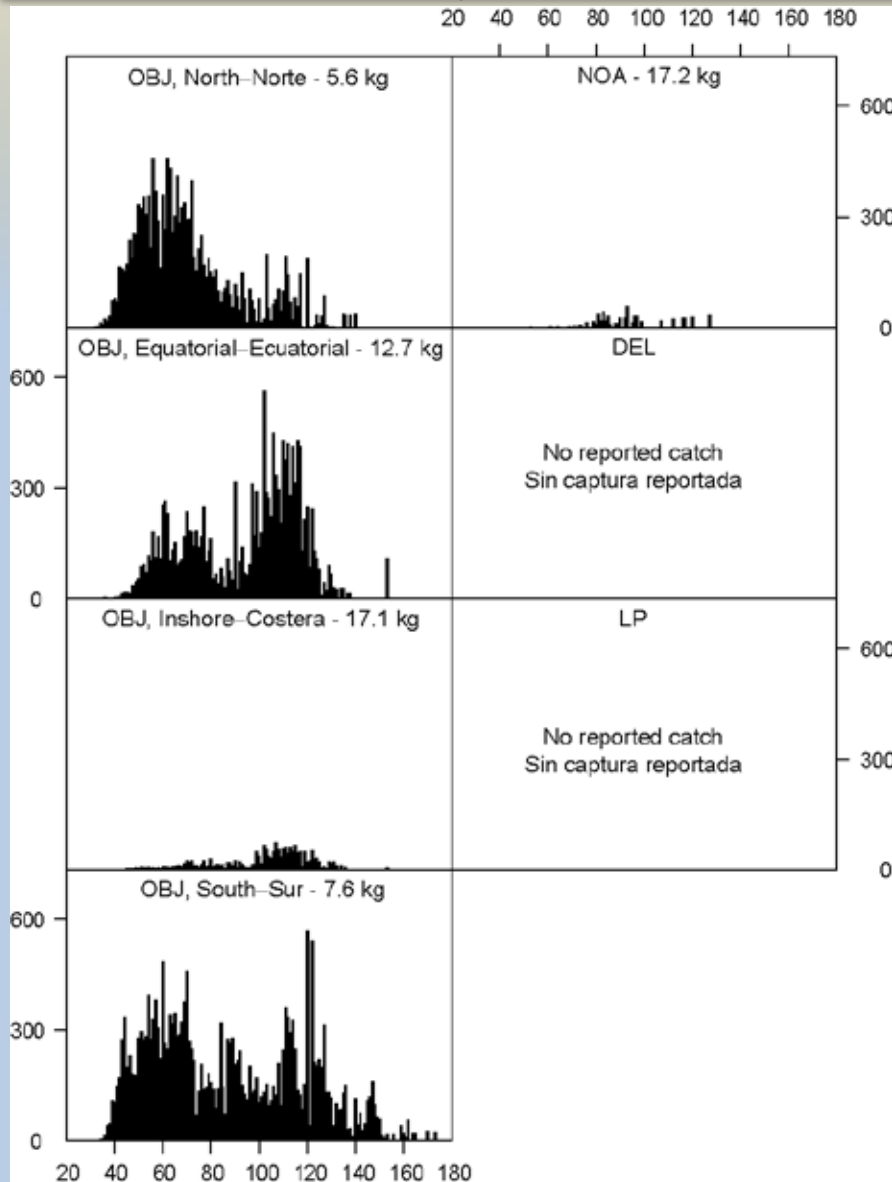
BET Biomasa - BET Biomass



BET - Composición por tallas—Size compositions

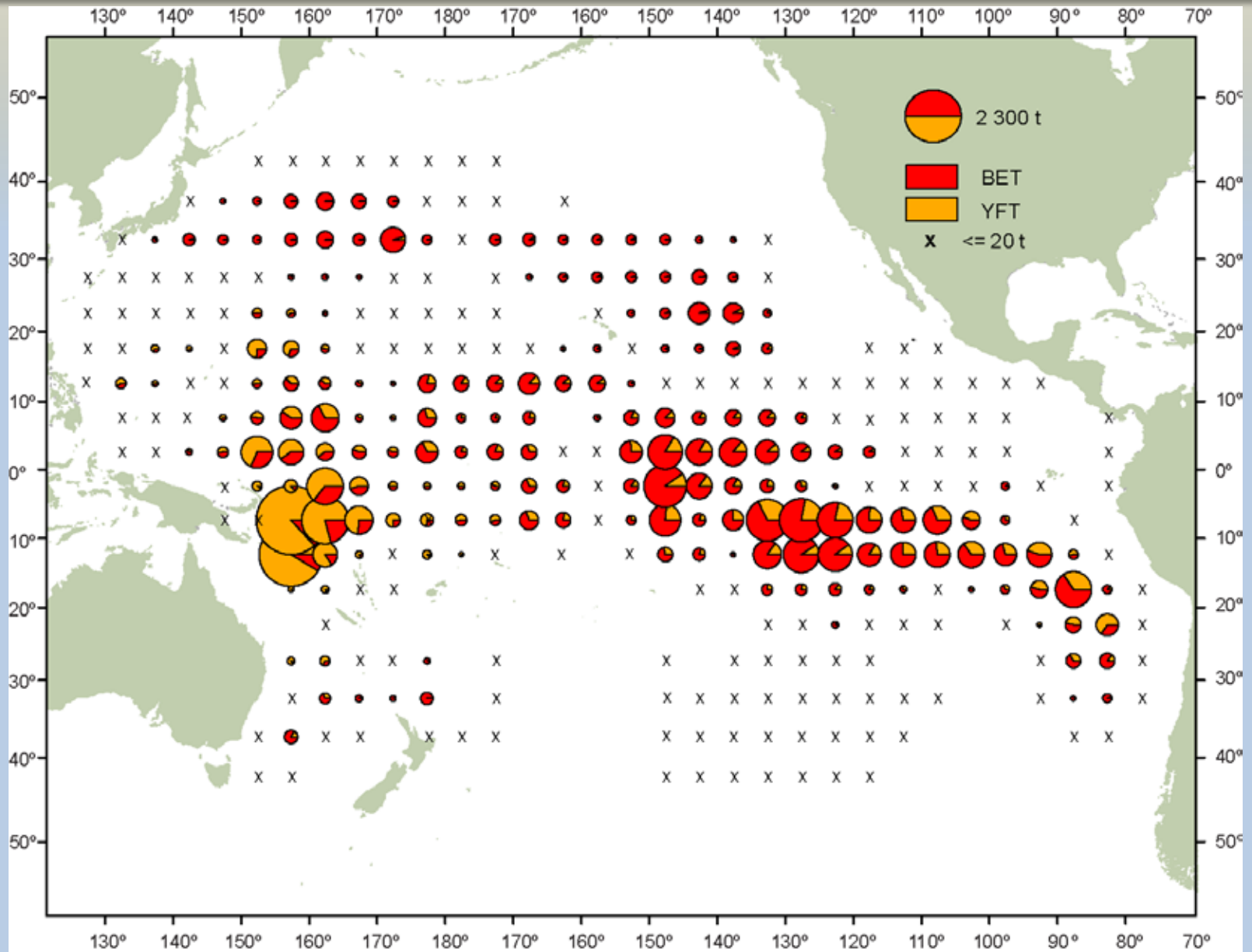
2011 by Area

2006 - 2011

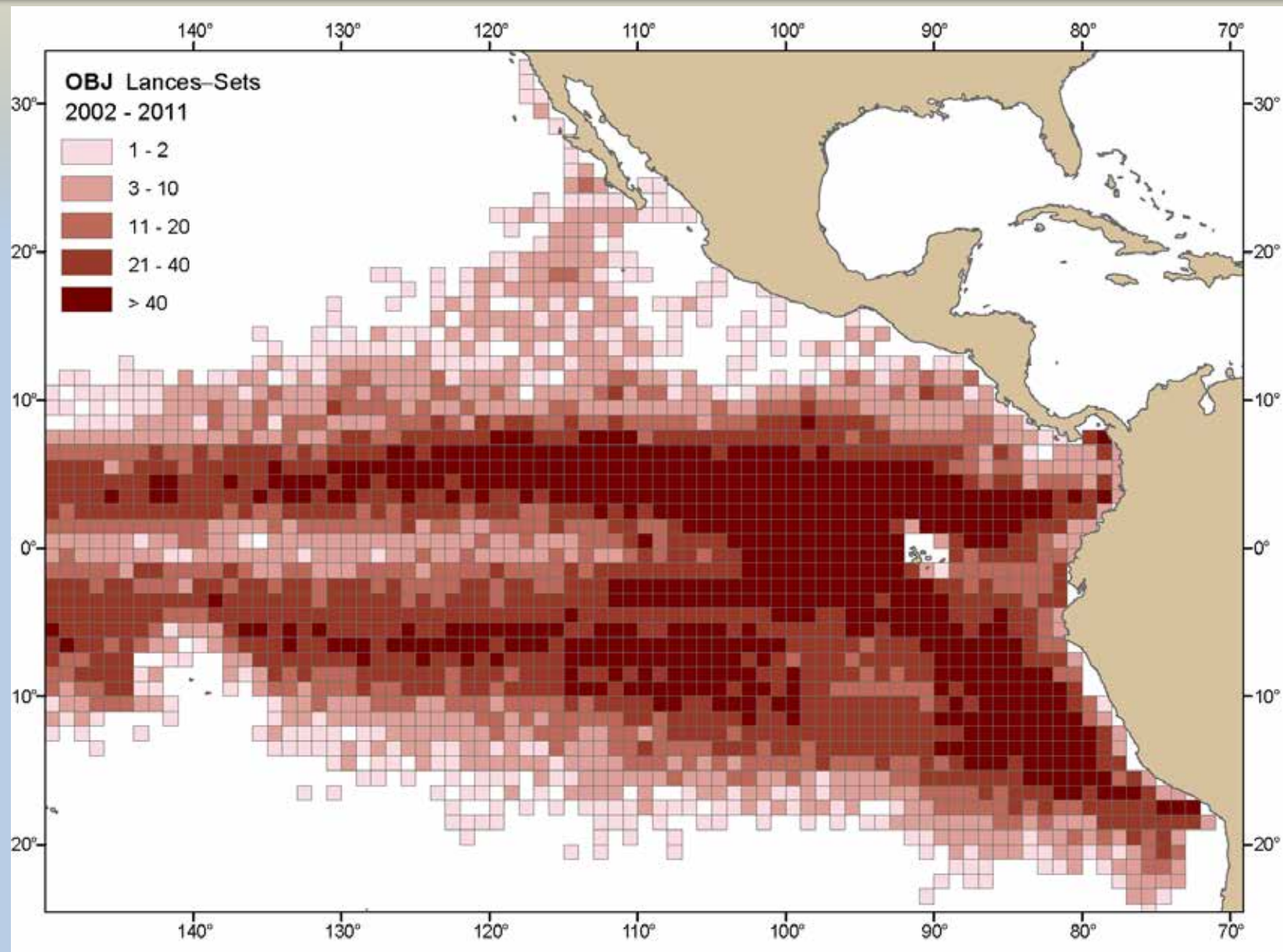


Length (cm)- Talla (cm)

BET distribución de LL - BET LL distribution 2006-2010



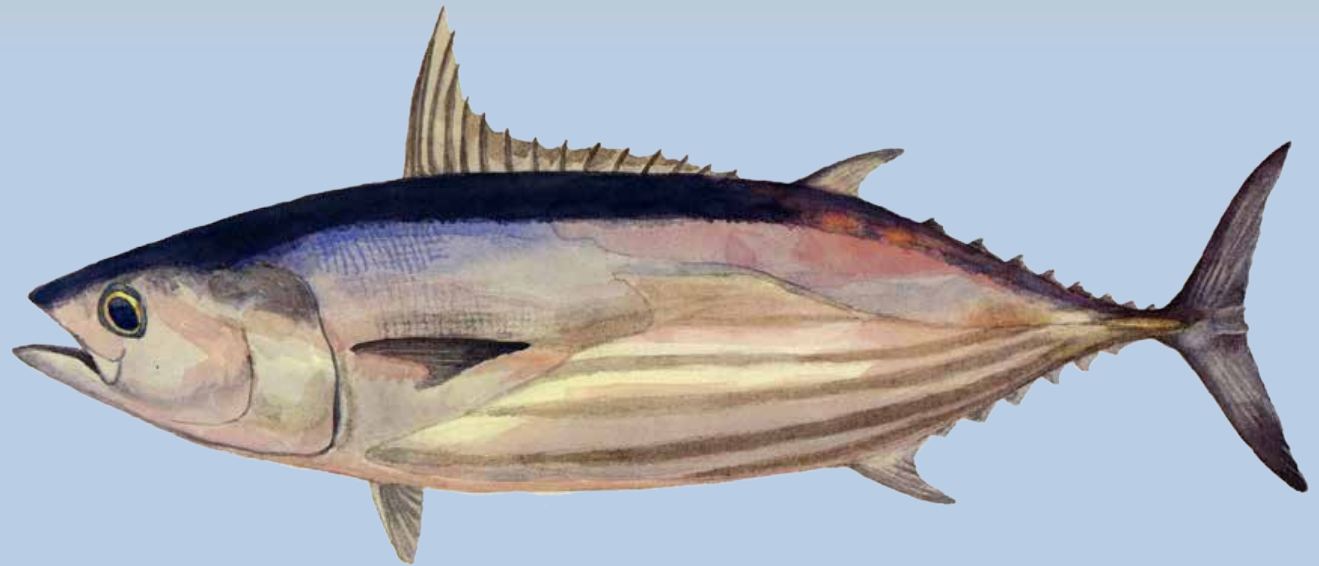
OBJ Lances sobre objetos flotantes - OBJ Floating object sets





CIAT

IATTC

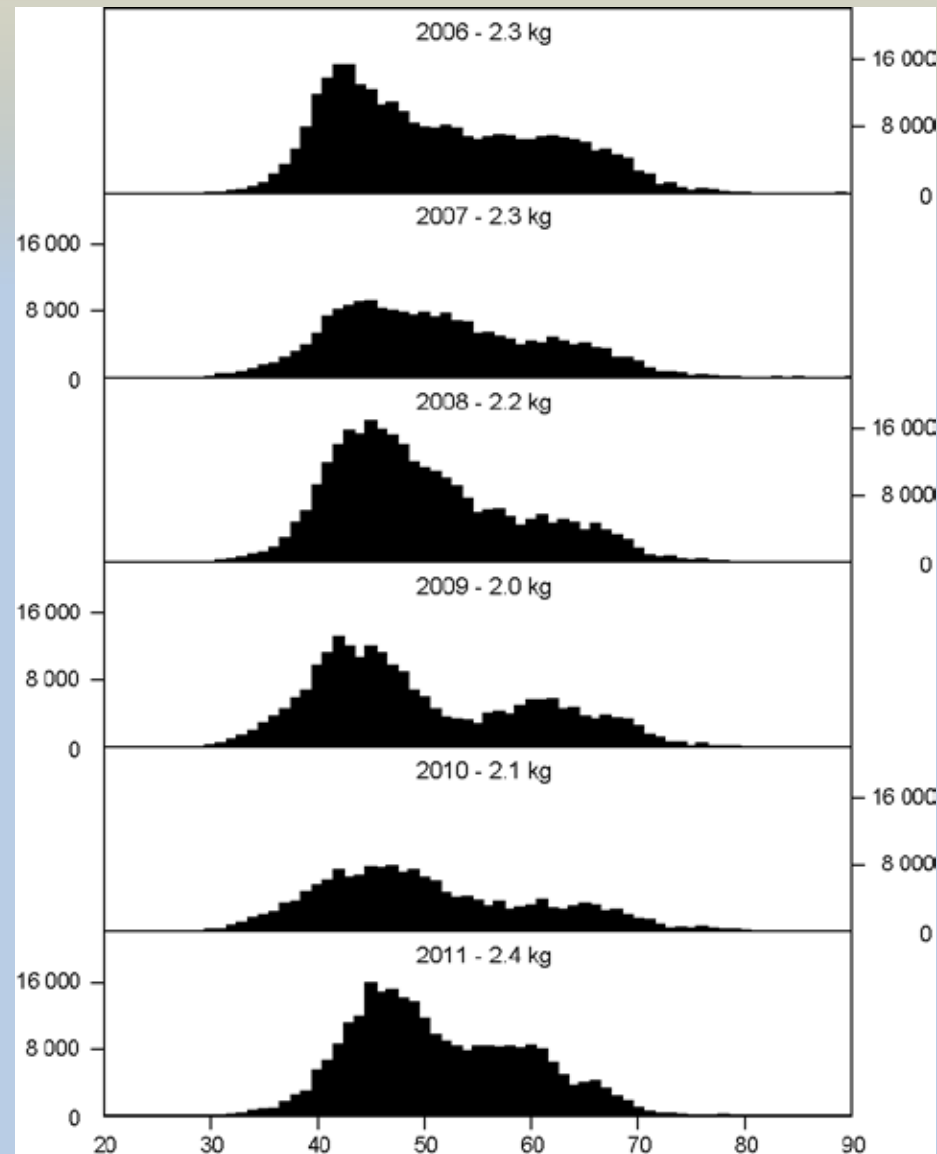
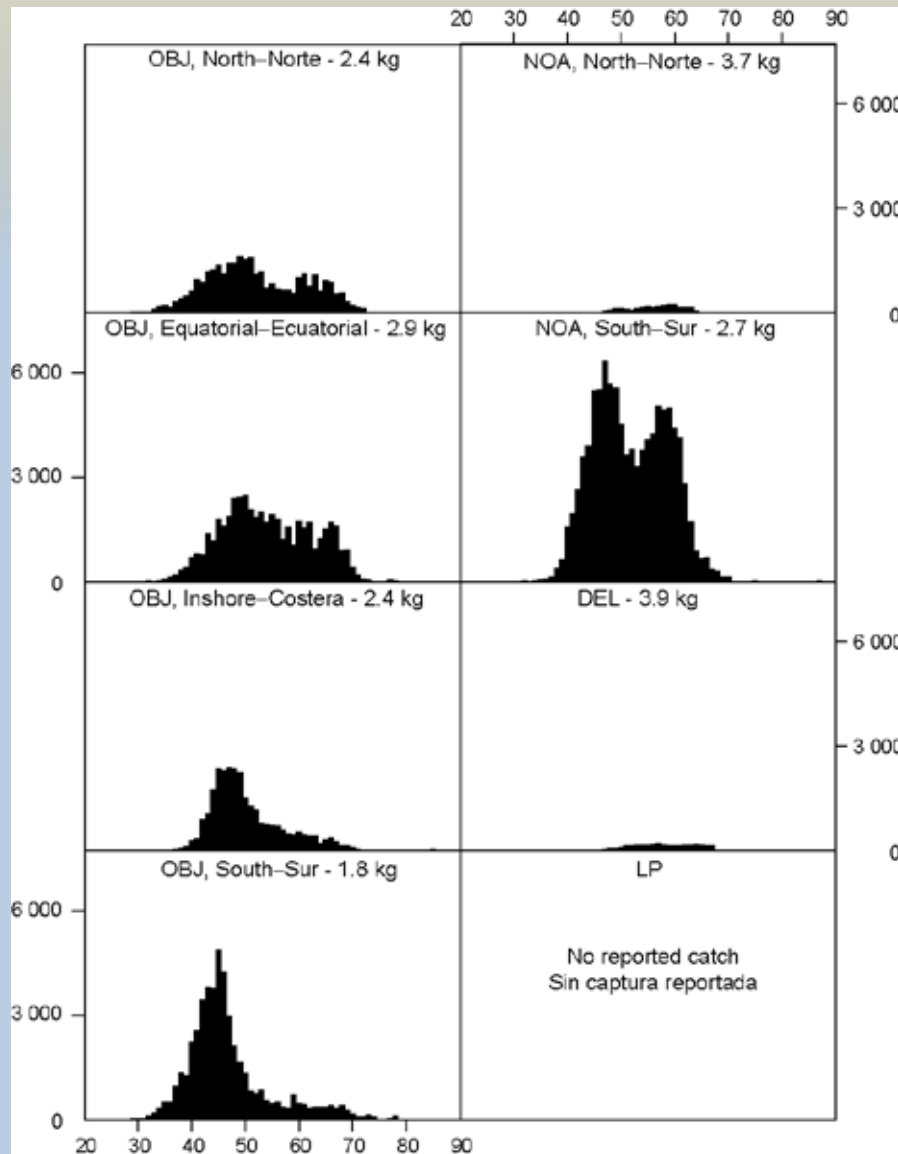


Barrilete-Skipjack

SKJ - Composición por tallas—Size compositions

2011 by Area

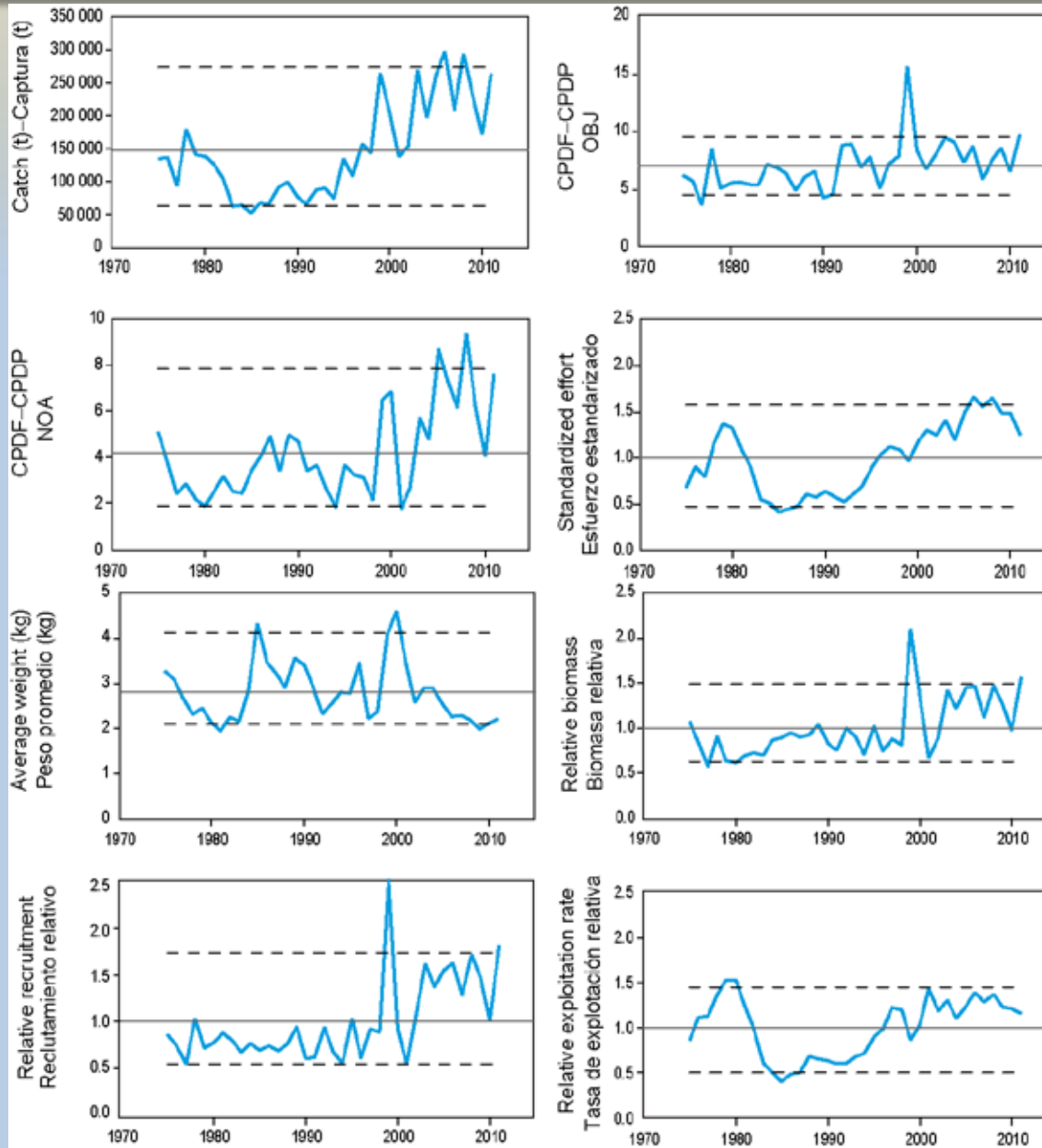
2006 - 2011



Length (cm)- Talla (cm)

SKJ Indicadores del estatus de la población

SKJ Indicators of the stock status





Comisión Interamericana del Atún Tropical Inter-American Tropical Tuna Commission

¿PREGUNTAS?
QUESTIONS?

