

Comisión Interamericana del Atún Tropical  
Inter-American Tropical Tuna Commission



21<sup>a</sup> Grupo de Trabajo Permanente sobre la Capacidad de la Flota  
21<sup>st</sup> Permanent Working Group on Fleet Capacity

94<sup>a</sup> Reunión de la CIAT–94<sup>th</sup> Meeting of the IATTC  
Bilbao, España-Spain, July 2019

# Límites especiales de capacidad\* – Special Capacity Limits\*

La situación actual con respecto a la utilización de esas límites especiales de capacidad es:  
The current situation regarding the utilization of these special capacity allocations is:

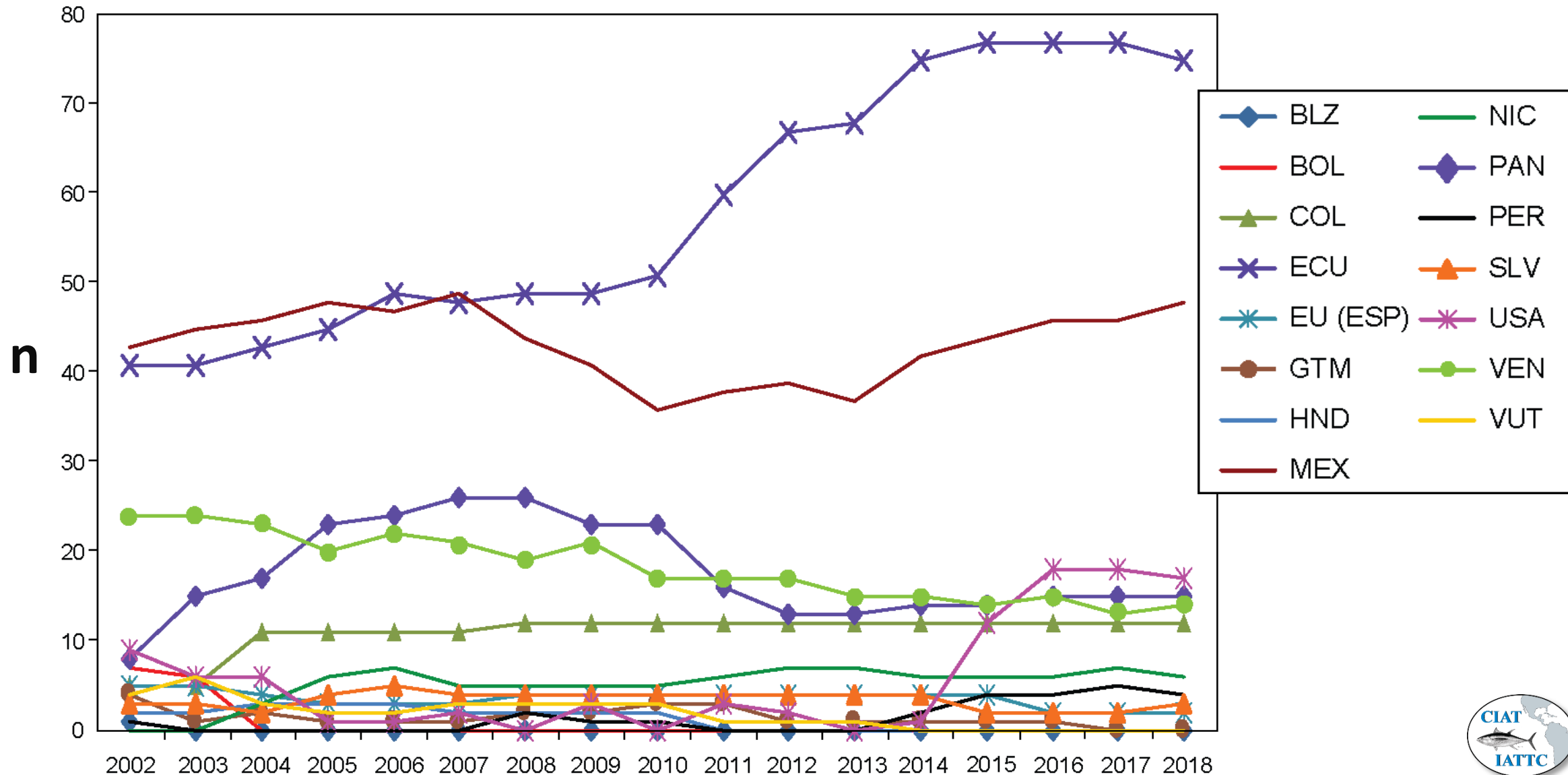
	Límite - Limit (m <sup>3</sup> )	
	Provisto - Provided	Restante - Remaining
Costa Rica	9 364	5 568
El Salvador	861	0
Guatemala	1 700	0
Nicaragua	5 300	0
Perú-Peru	8 195	454
	25 420	6 022

\*párrafo-paragraph 10, Res C-02-03

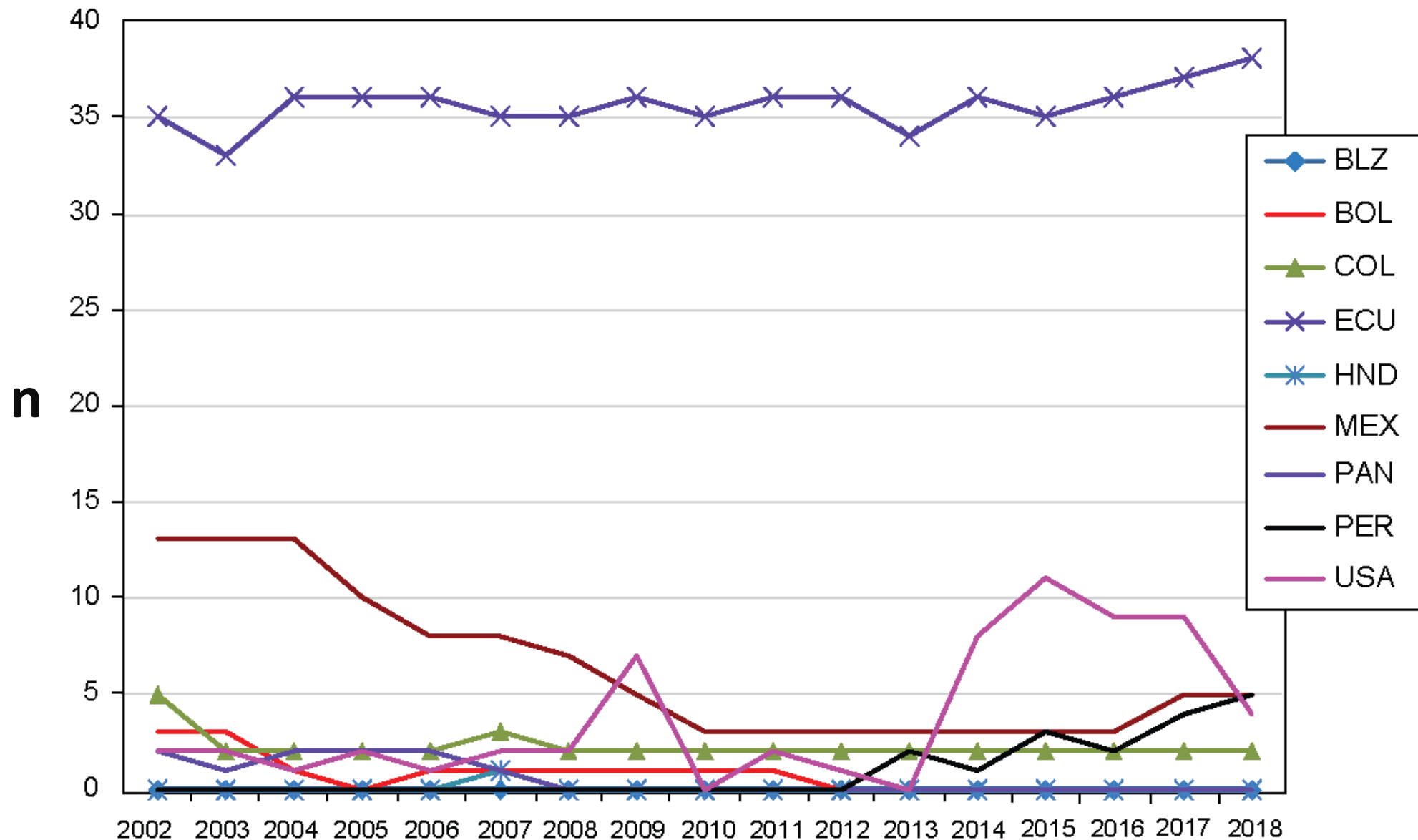


# Estimación del número de buques cerqueros (>400 m<sup>3</sup>) que pescaron en el OPO durante el periodo 2002-2018

## Estimates of the number of purse-seine vessels (>400 m<sup>3</sup>) that fished in the EPO during the period 2002-2018

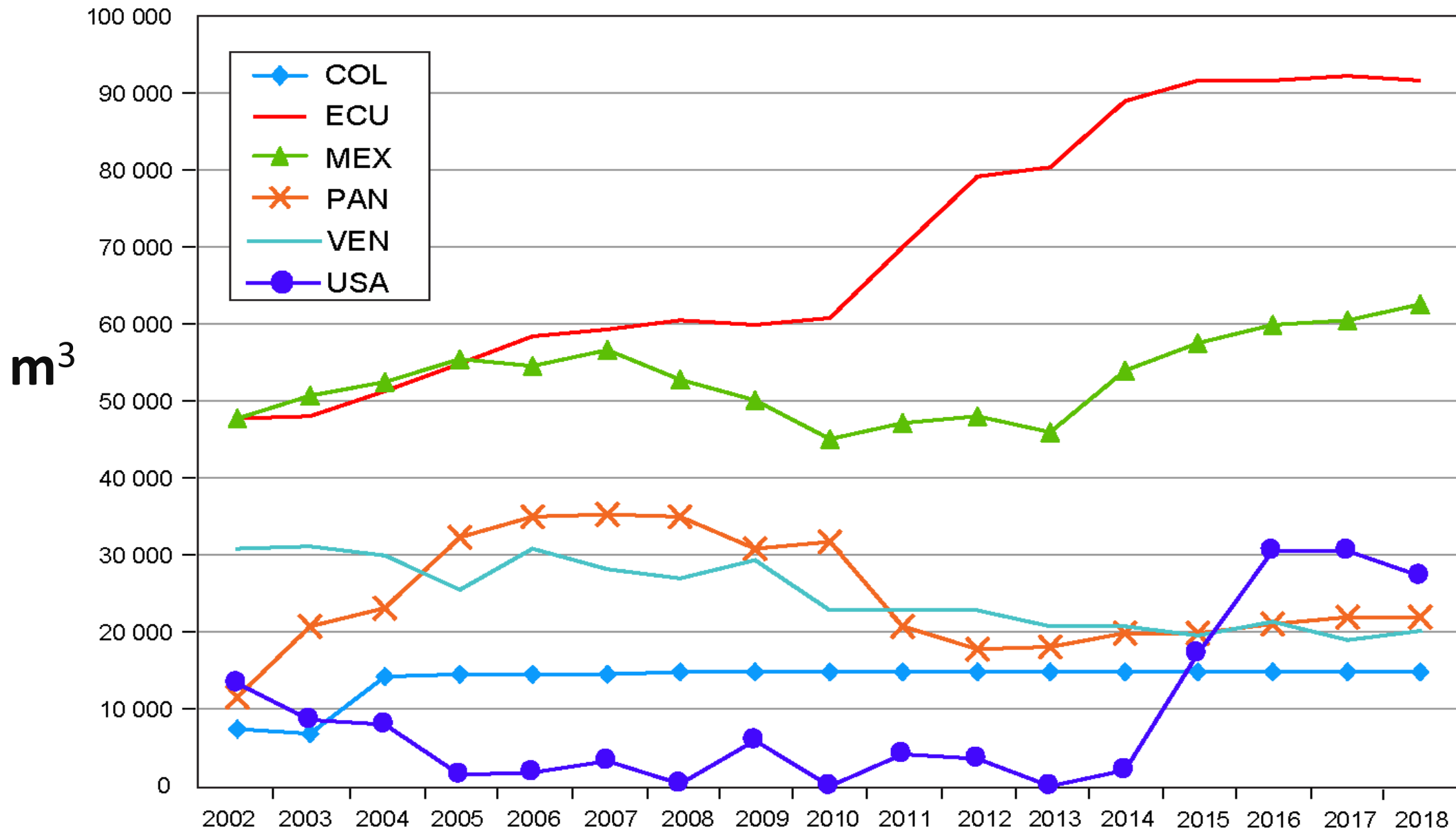


Estimación del número de buques cerqueros (<math><400\text{ m}^3</math>) que pescaron en el OPO durante el periodo 2002-2018  
Estimates of the number of purse-seine vessels (<math><400\text{ m}^3</math>) that fished in the EPO during the period 2002-2018



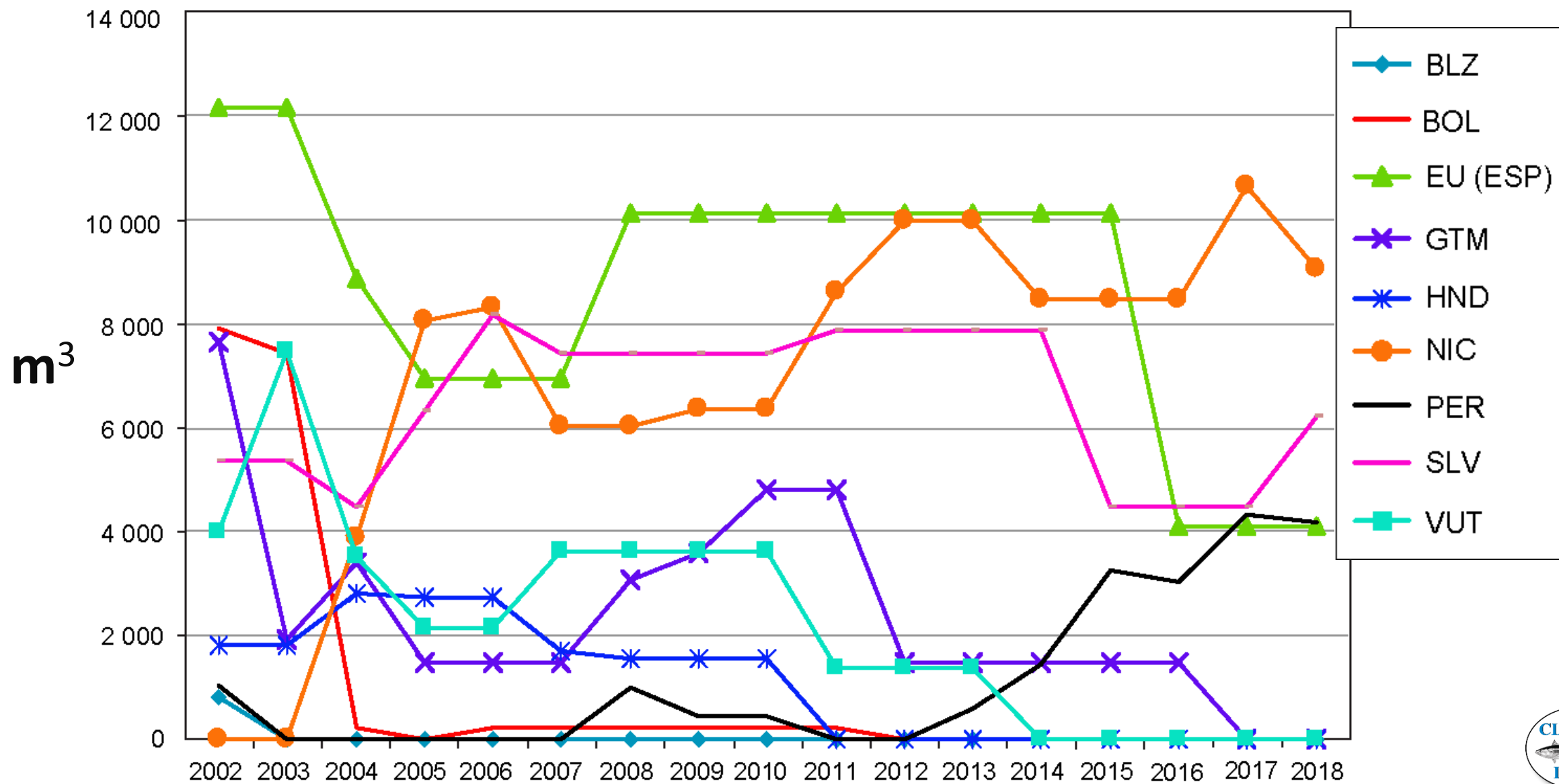
# Volumen de bodegas (metros cúbicos) de las principales flotas de buques cerqueros que pescaron en el OPO en 2002-2018

## Well volume (cubic meters) of the principal fleets of purse-seine vessels that fished in the EPO in 2002-2018

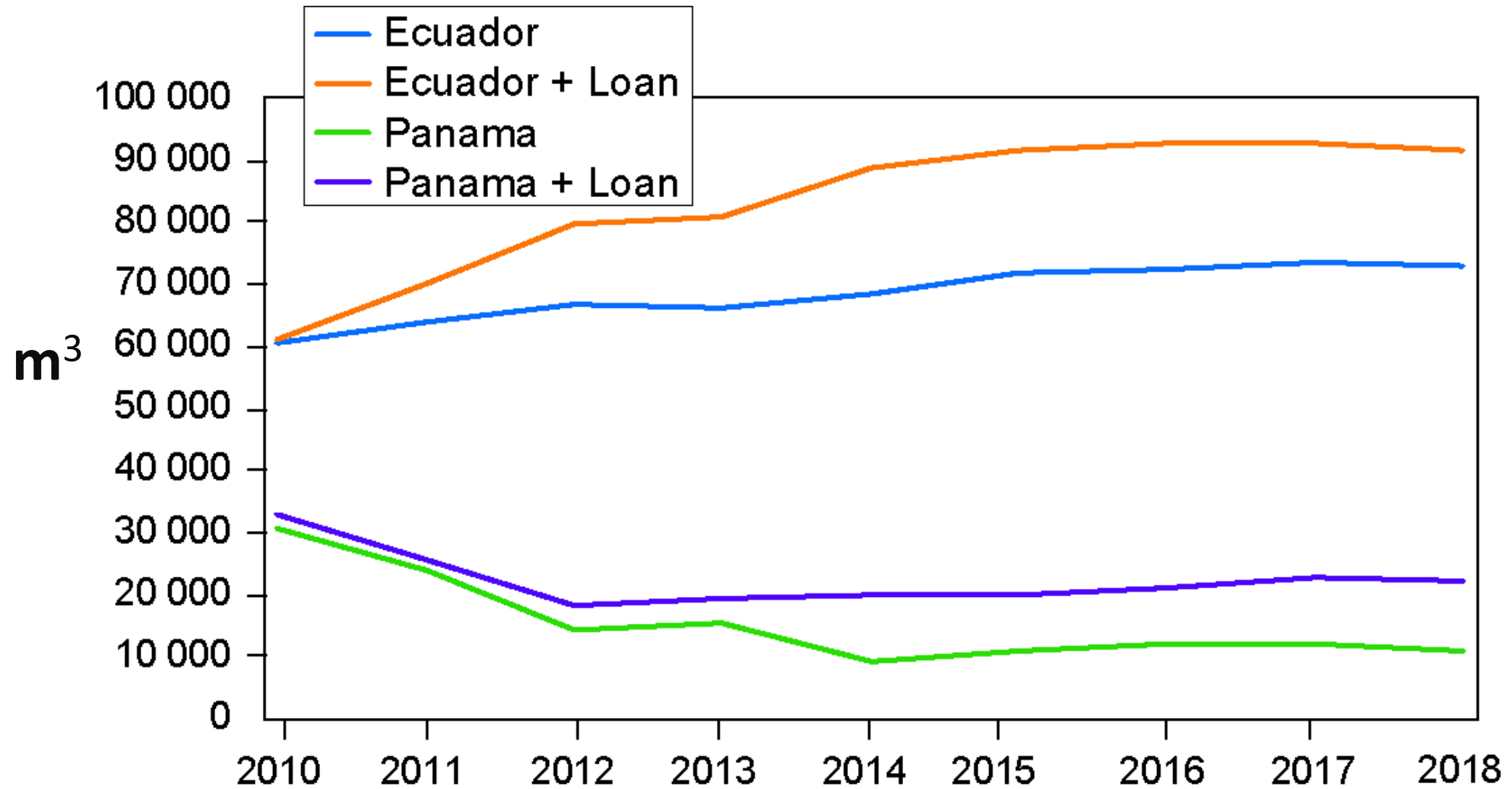


# Volumen de bodegas de las flotas menores de buques cerqueros que pescaron en el OPO en 2002-2018

## Well volume (cubic meters) of the smaller fleets of purse-seine vessels that fished in the EPO in 2002-2018

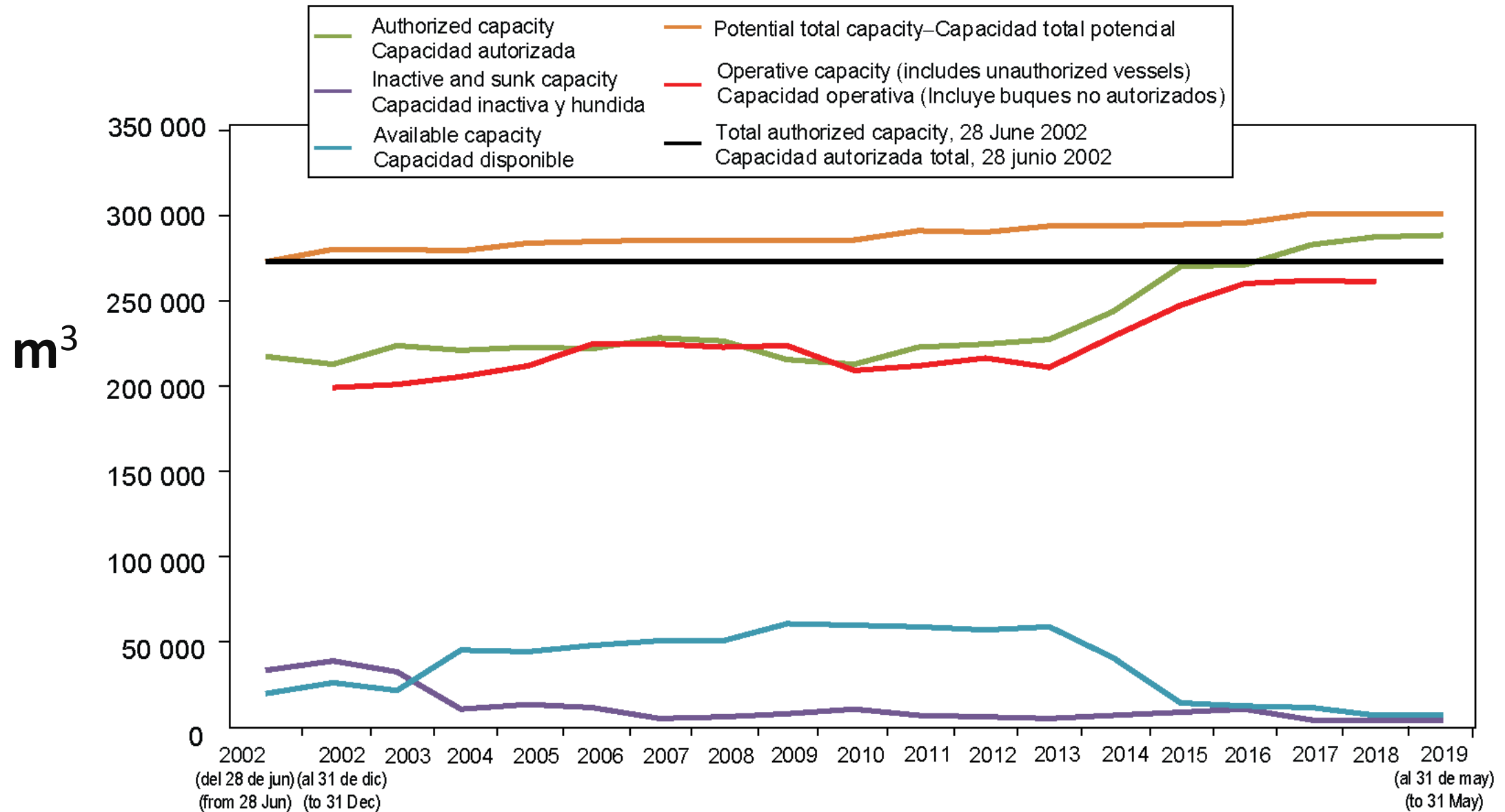


# Capacidad y Préstamos—Capacity and Loans



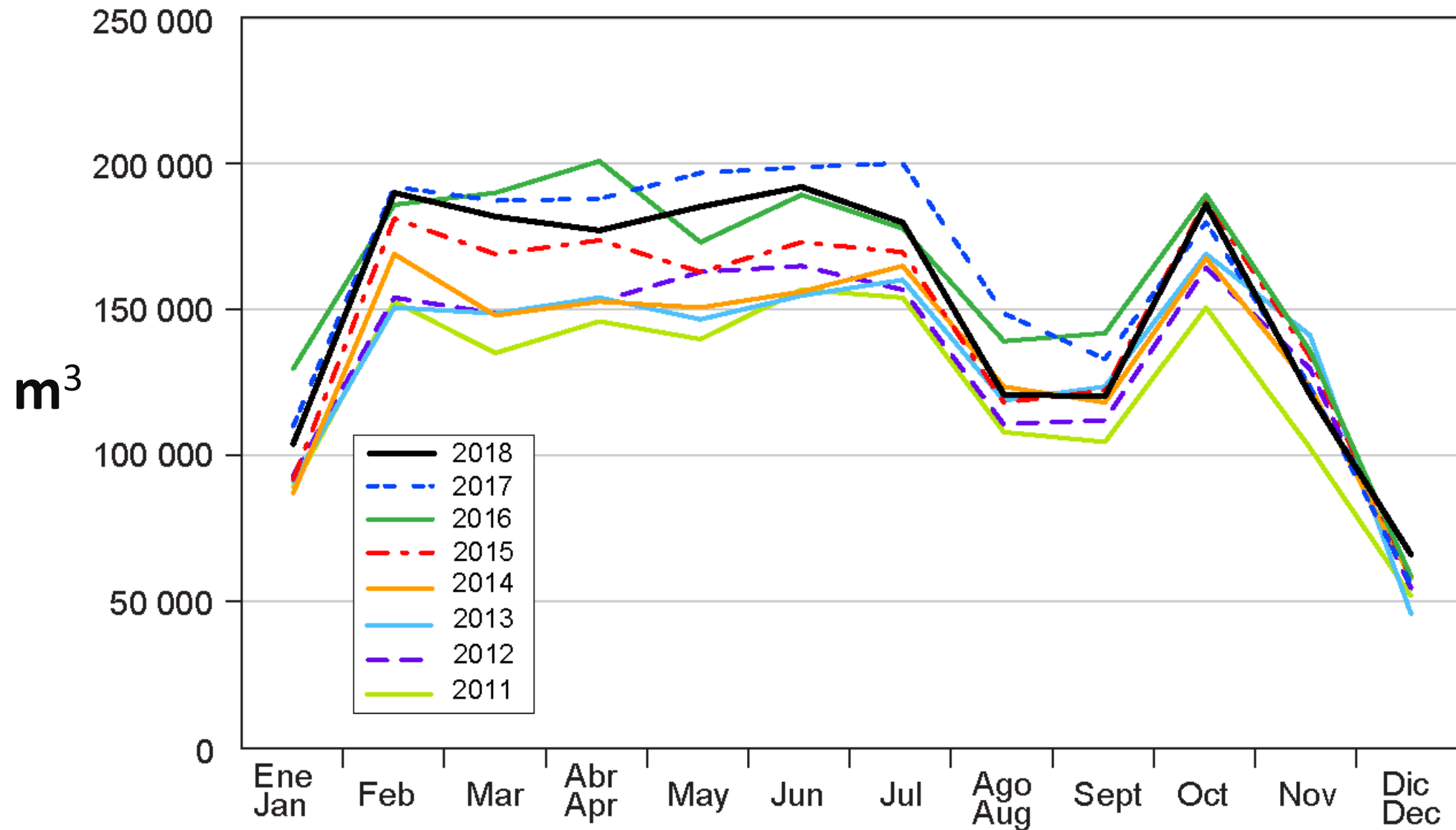
# Capacidad de la flota de cerqueros en el OPO, 2002-2019

## Purse-Seine fleet capacity in the EPO, 2002-2019



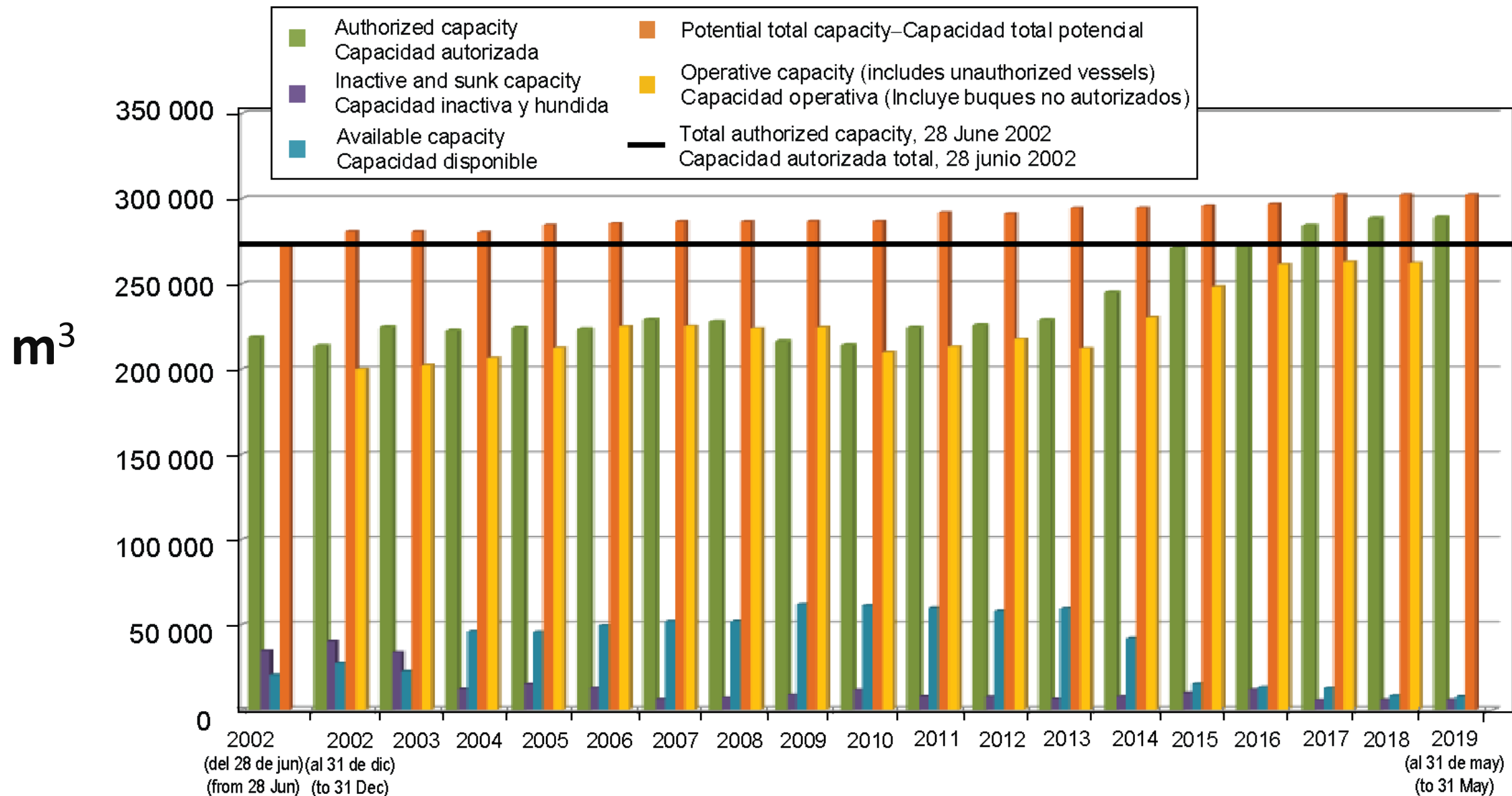


Capacidad promedio (metros cubicos) de buques cerqueros y cañeros en el mar en el OPO en 2011-2018 por mes  
Average capacity (cubic meters) of purse-seine and pole-and-line vessels at sea in the EPO in 2011-2018 by month



# Capacidad de la flota de cerqueros en el OPO, 2002-2019

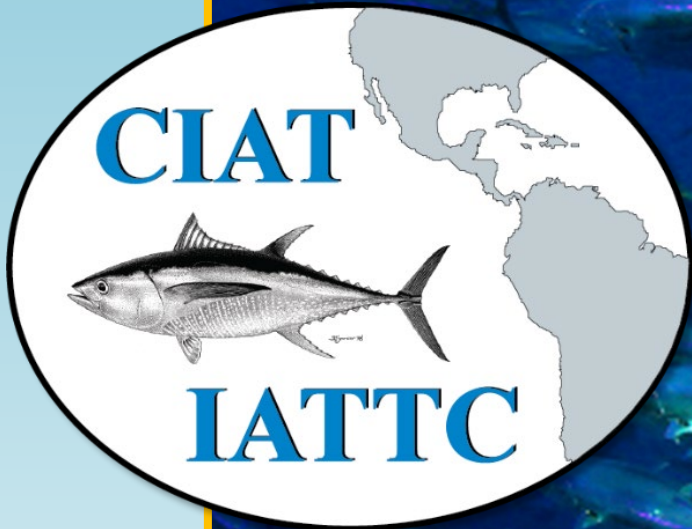
## Purse-Seine fleet capacity in the EPO, 2002-2019



# Capacidad de la flota de cerqueros en el OPO, 2002-2019

## Purse-Seine fleet capacity in the EPO, 2002-2019

Dates	Authorized capacity	Inactive <sup>419</sup> and sunk capacity	Available capacity	Potential total capacity	Operative capacity	Total authorized capacity, 28 Jun 2002
28 Jun 2002	218 482	34 565	20 420	273 467		273 467
31 Dec 2002	213 453	40 085	27 346	280 884	199 870	
31 Dec 2003	224 589	33 595	22 576	280 760	202 381	
31 Dec 2004	222 254	12 083	45 993	280 330	206 473	
31 Dec 2005	223 996	14 896	45 621	284 513	212 419	
31 Dec 2006	223 277	12 843	49 488	285 608	225 166	
31 Dec 2007	228 819	6 019	51 886	286 724	225 359	
31 Dec 2008	227 481	7 110	52 032	286 623	223 804	
31 Dec 2009	216 137	8 816	61 883	286 836	224 632	
31 Dec 2010	214 002	11 555	61 229	286 786	210 025	
31 Dec 2011	224 126	7 895	59 901	291 922	213 237	
31 Dec 2012	225 620	7 589	58 027	291 236	217 687	
31 Dec 2013	228 543	6 304	59 572	294 419	212 087	
31 Dec 2014	244 744	7 749	42 020	294 513	230 379	
31 Dec 2015	270 936	9 790	15 132	295 858	248 428	
31 Dec 2016	271 842	11 796	13 293	296 931	261 474	
31 Dec 2017	283 970	5 532	12 859	302 361	263 018	
31 Dec 2018	288,203	5,673	8,485	302,361	262,226	
31 May 2019	288,850	5,673	7,838	302,361		



# Questions

