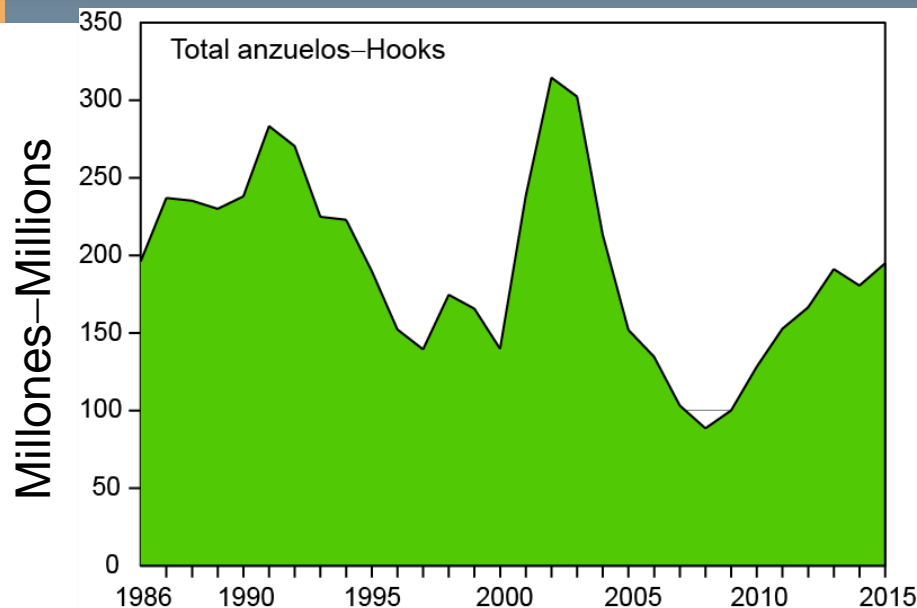




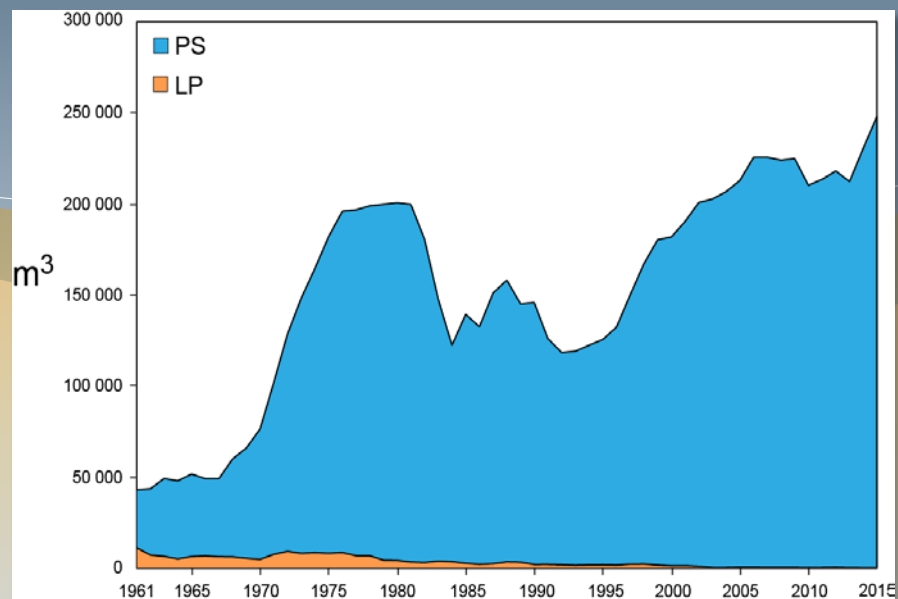
Technical Meeting on tuna conservation measures
Reunión técnica sobre medidas de conservación de atún



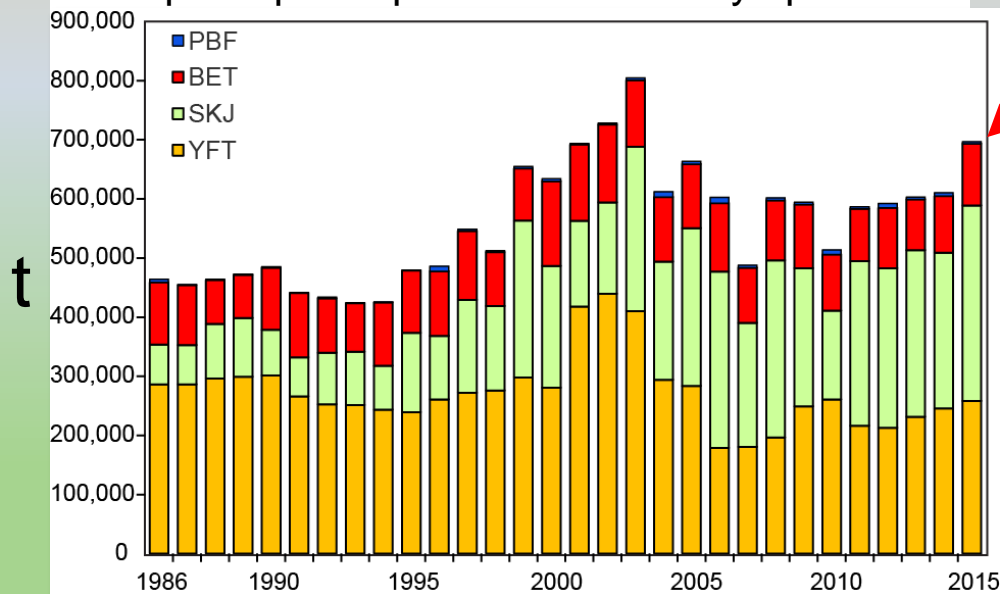
LL - Anzuelos—LL - Hooks



Capacidad de flota—Fleet capacity



Captura por especies—Catches by species



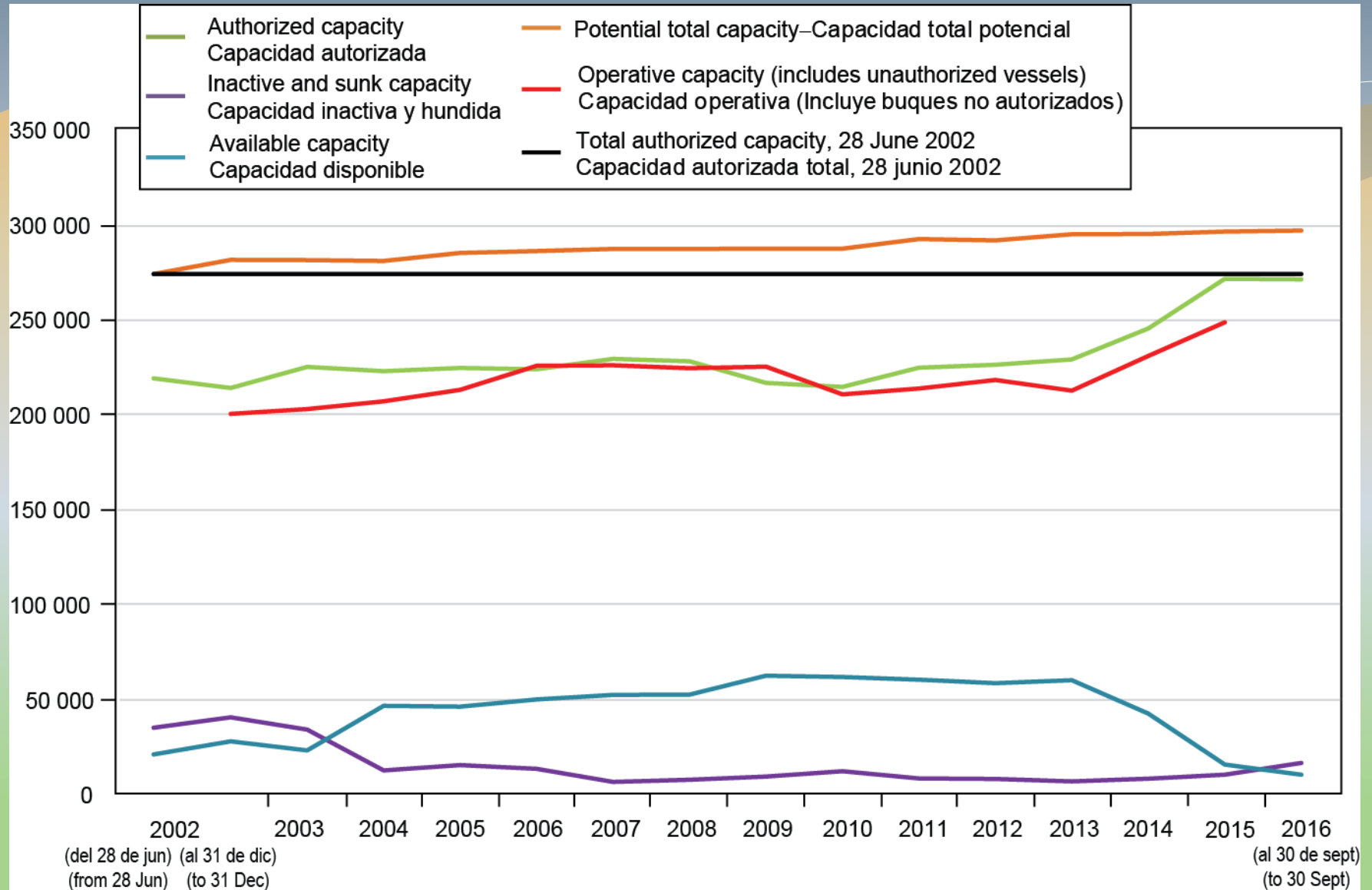
2015:
697 000 mt

Table - Capacidad de la flota de cerqueros en el OPO, 2002-2016
Purse-Seine fleet capacity in the EPO, 2002-2016

Dates	Authorized capacity	Inactive and sunk capacity	Available capacity	Potential total capacity	Operative capacity	Total authorized capacity, 28 Jun 2002
28 Jun 2002	218 482	34 565	20 420	273 467		273 467
31 Dec 2002	213 453	40 085	27 346	280 884	199 870	
31 Dec 2003	224 589	33 595	22 576	280 760	202 381	
31 Dec 2004	222 254	12 083	45 993	280 330	206 473	
31 Dec 2005	223 996	14 896	45 621	284 513	212 419	
31 Dec 2006	223 277	12 843	49 488	285 608	225 166	
31 Dec 2007	228 819	6 019	51 886	286 724	225 359	
31 Dec 2008	227 481	7 110	52 032	286 623	223 804	
31 Dec 2009	216 137	8 816	61 883	286 836	224 296	
31 Dec 2010	214 002	11 555	61 229	286 786	210 025	
31 Dec 2011	224 126	7 895	59 901	291 922	213 237	
31 Dec 2012	225 620	7 589	58 027	291 236	217 687	
31 Dec 2013	228 543	6 304	59 572	294 419	212 087	
31 Dec 2014	244 744	7 749	42 020	294 513	230 379	
31 Dec 2015	270 936	9 790	15 132	295 858	247 978	
30 Sep 2016	270 660	15 991	9 764	296 415	264 859	

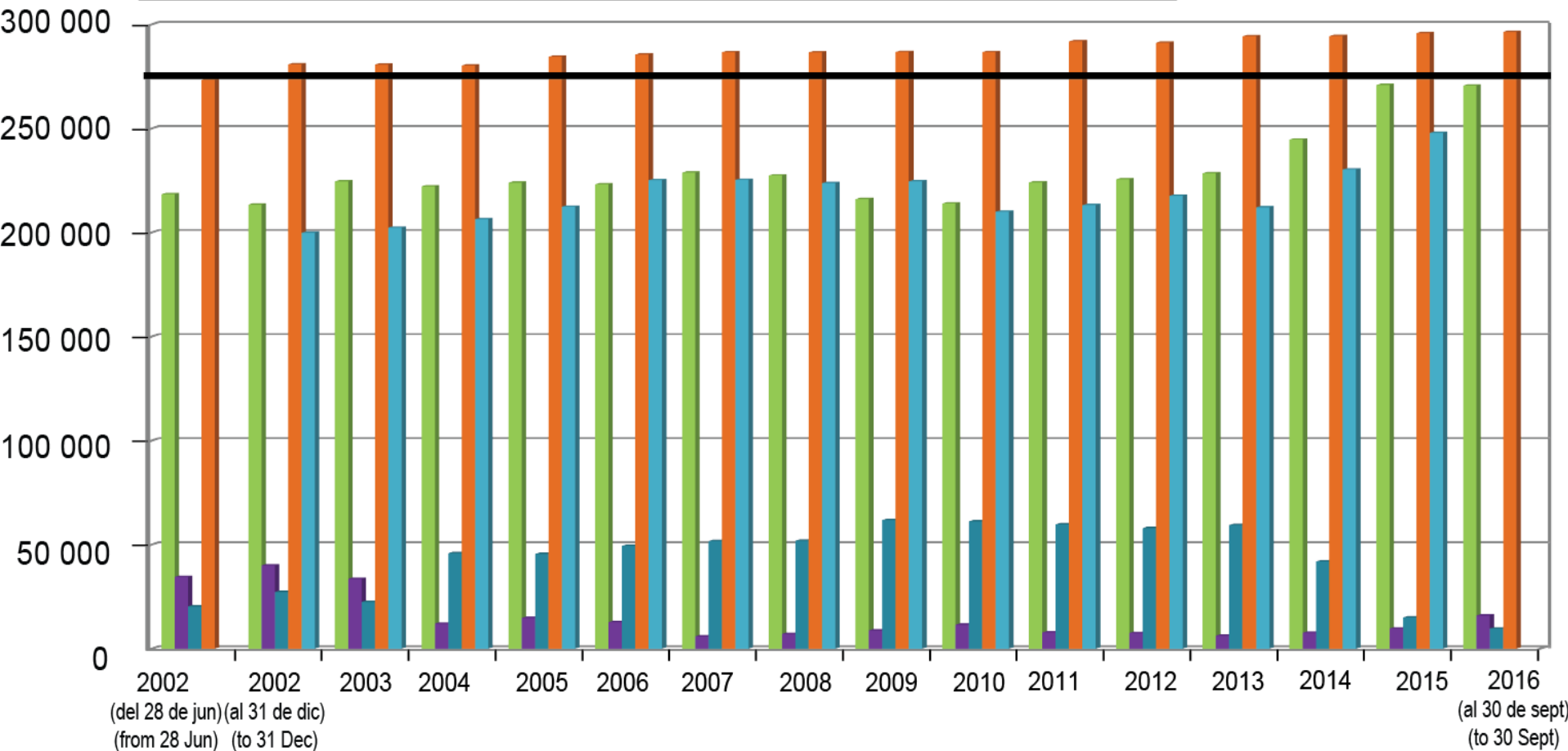
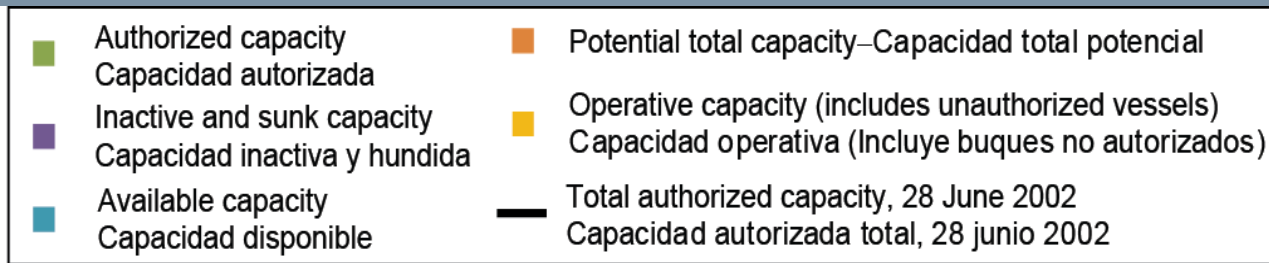
Capacidad de la flota de cerco en el OPO, 2002-2016

Purse-Seine fleet capacity in the EPO, 2002-2016



Capacidad de la flota de cerco en el OPO, 2002-2016

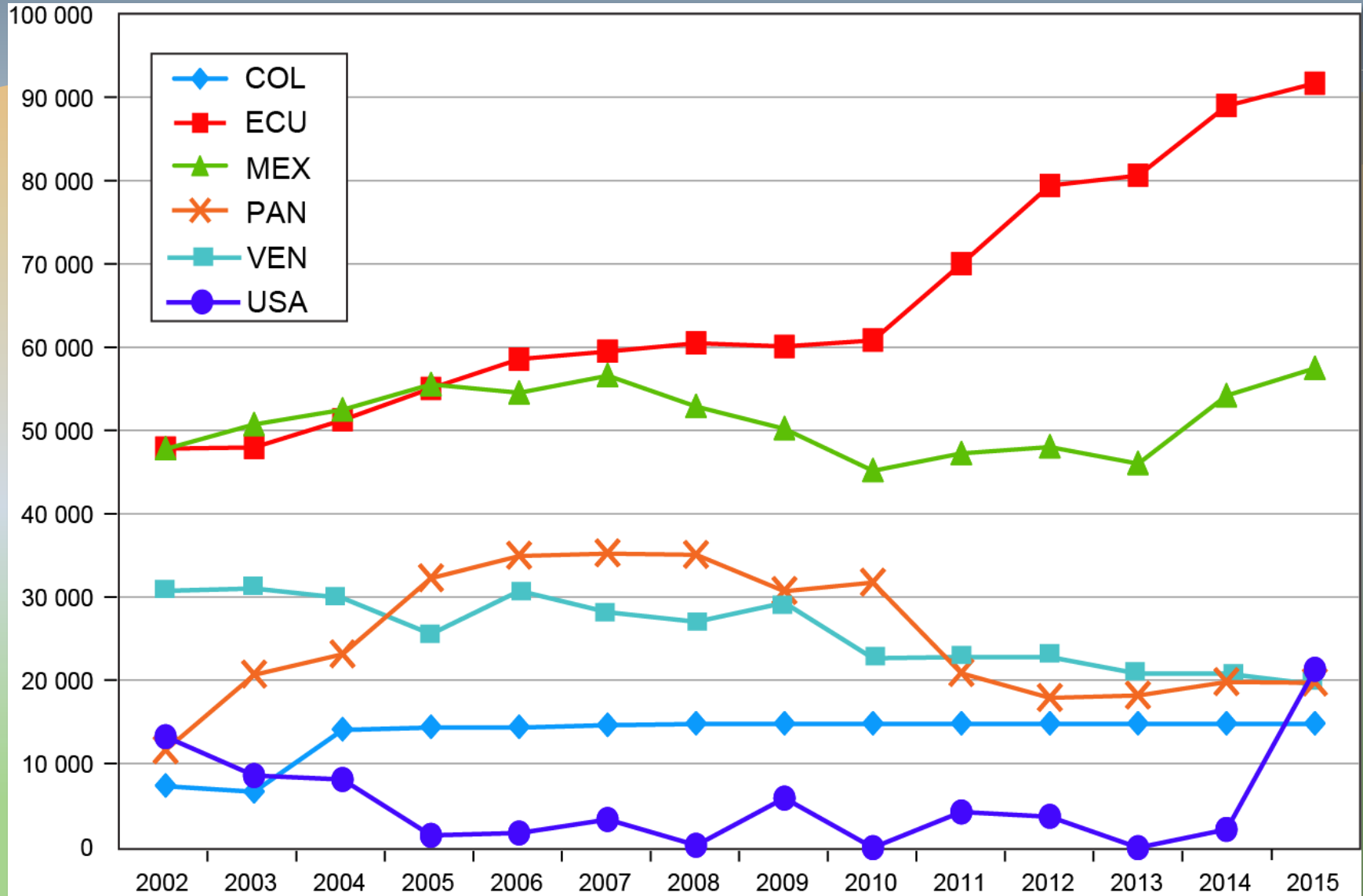
Purse-Seine fleet capacity in the EPO, 2002-2016



Volumen de bodegas (metros cúbicos) de las principales flotas de buques cerqueros que pescaron en el OPO en 2002-2015–

Well volume (cubic meters) of the principal fleets of purse-seine vessels that fished in the EPO in 2002-2015

m³

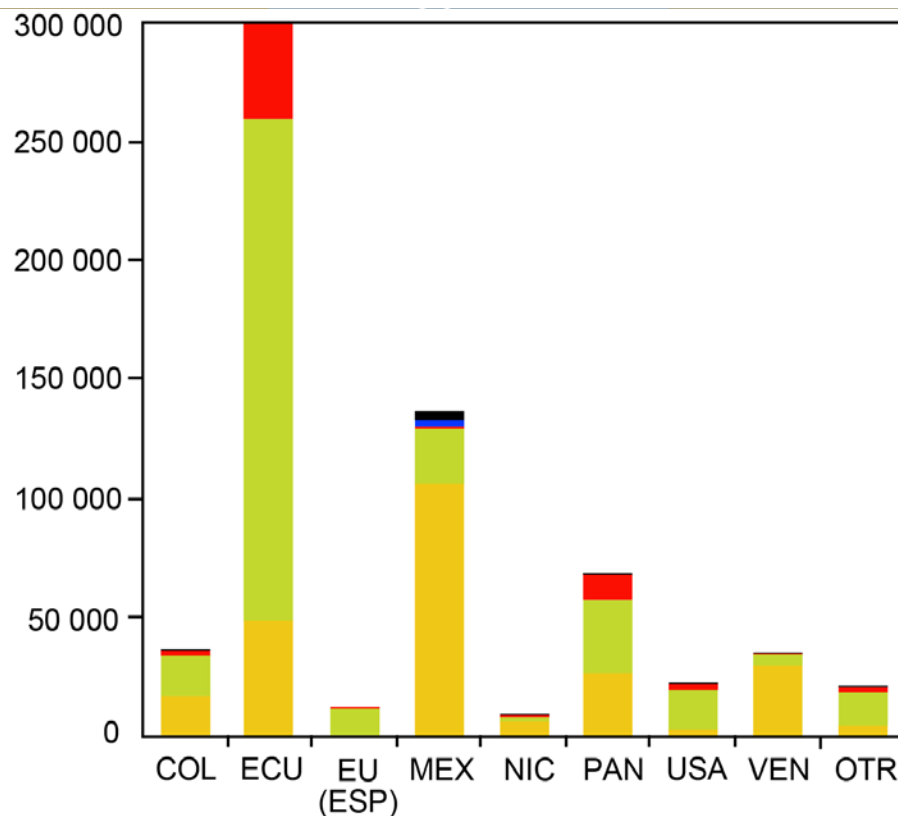
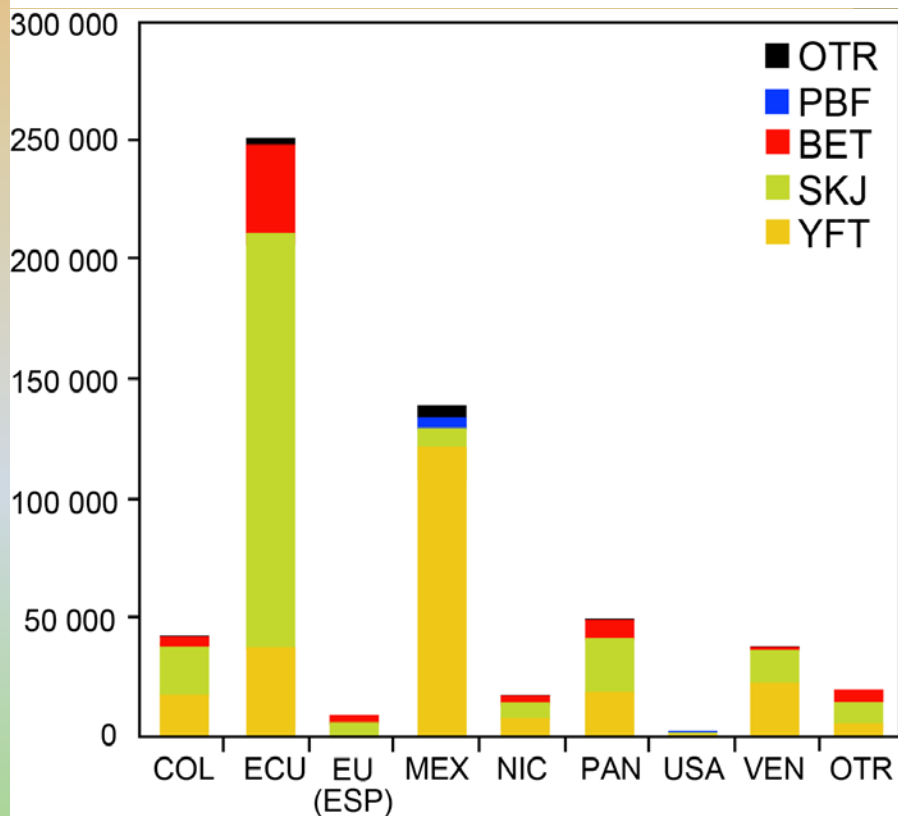


Captura cerquera por pabellón – PS fleet tuna catches by country

Todas las especies de atún All tuna species

2014

2015

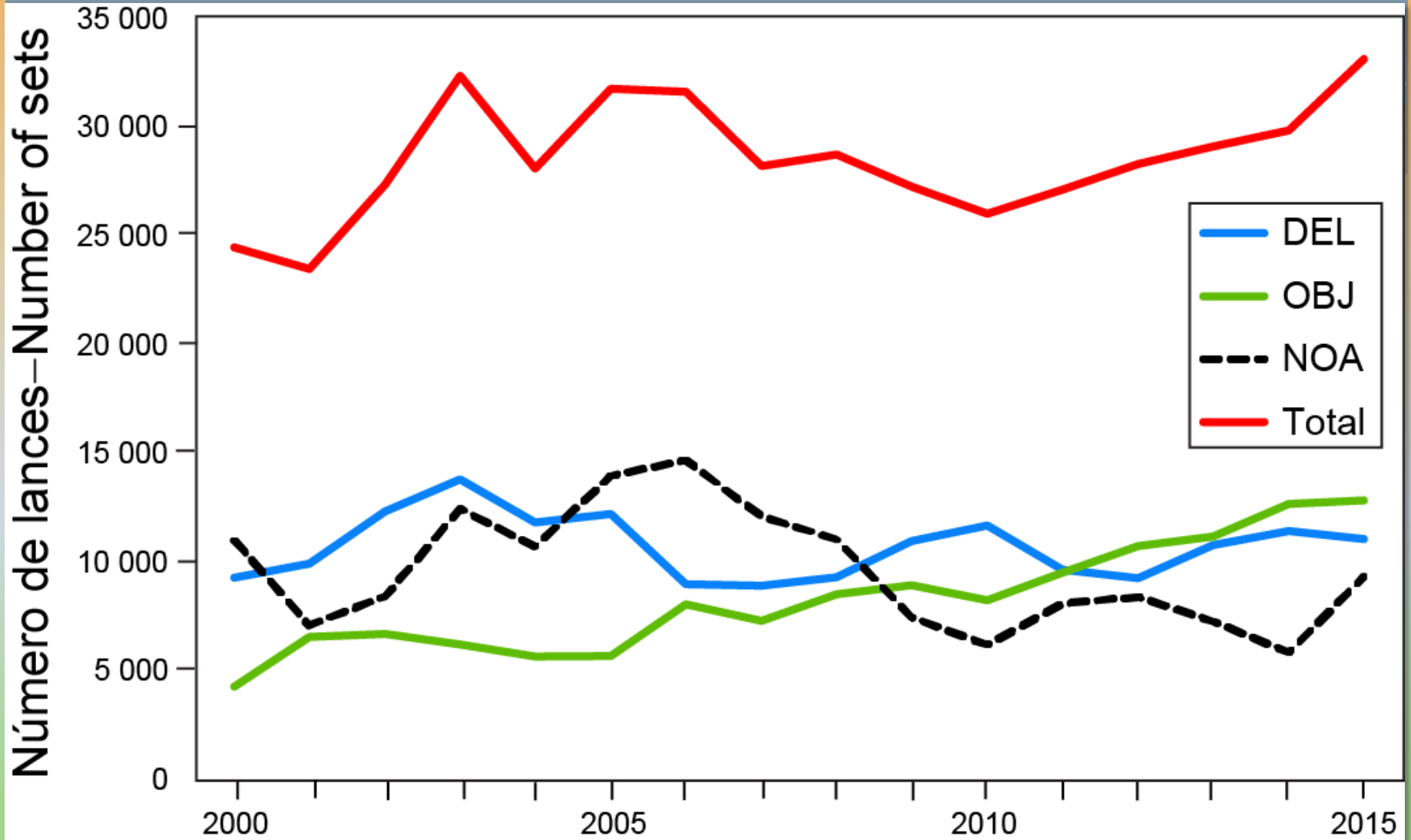


Total captura–catch
568 000 mt

Total captura–catch
645 000 mt

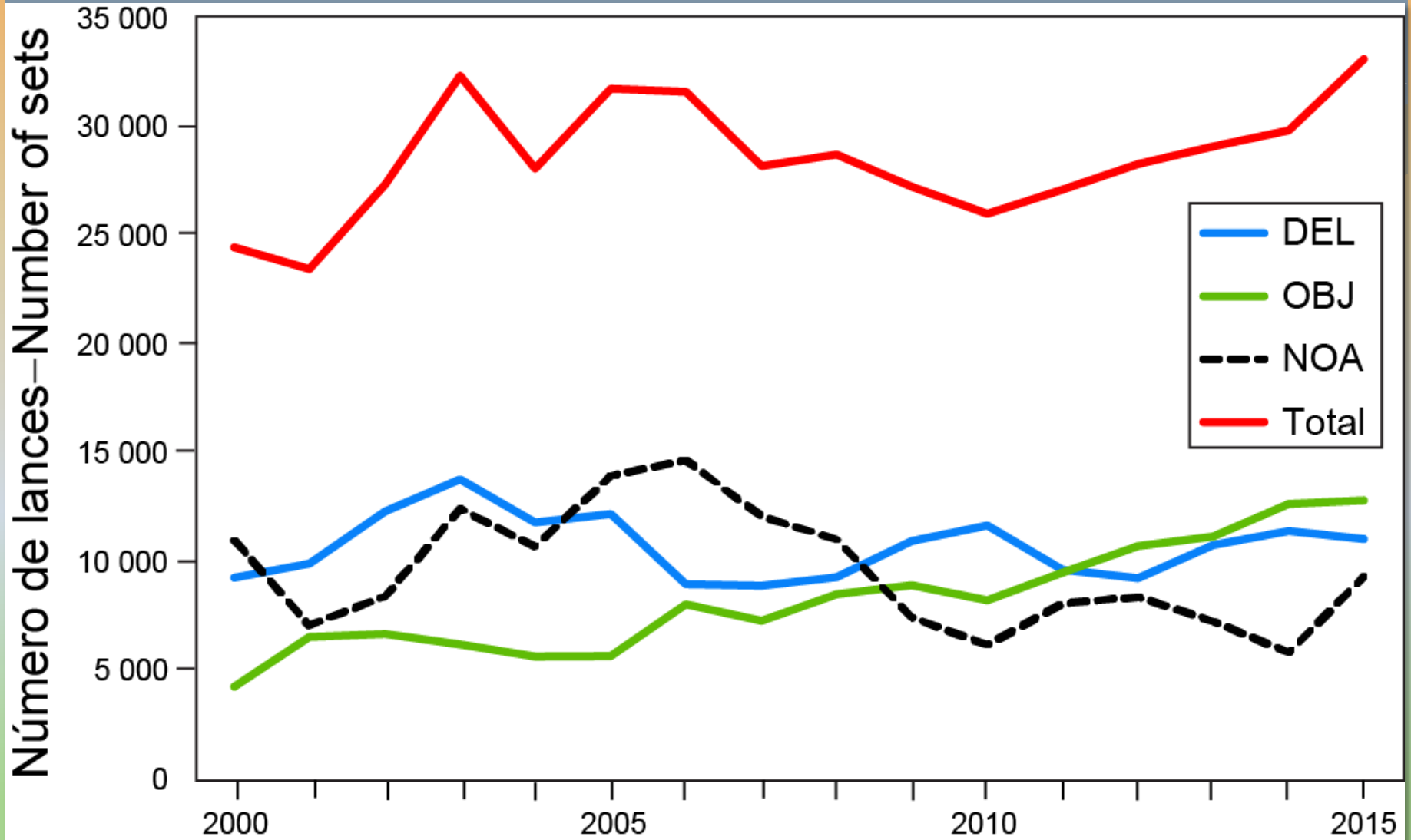
Número estimado de lances, por tipo

Estimated number of sets, by set type

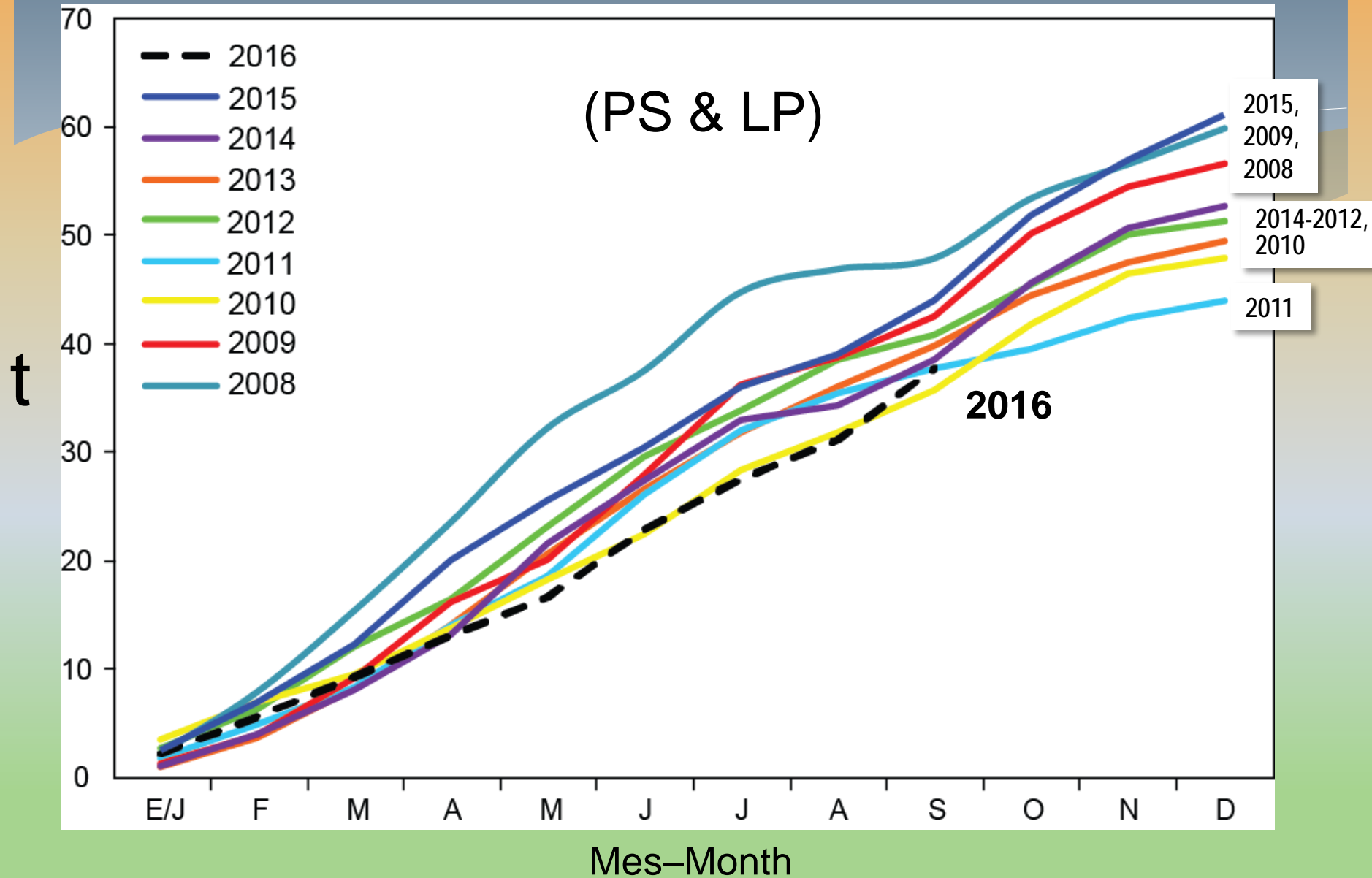


Número estimado de lances, por tipo

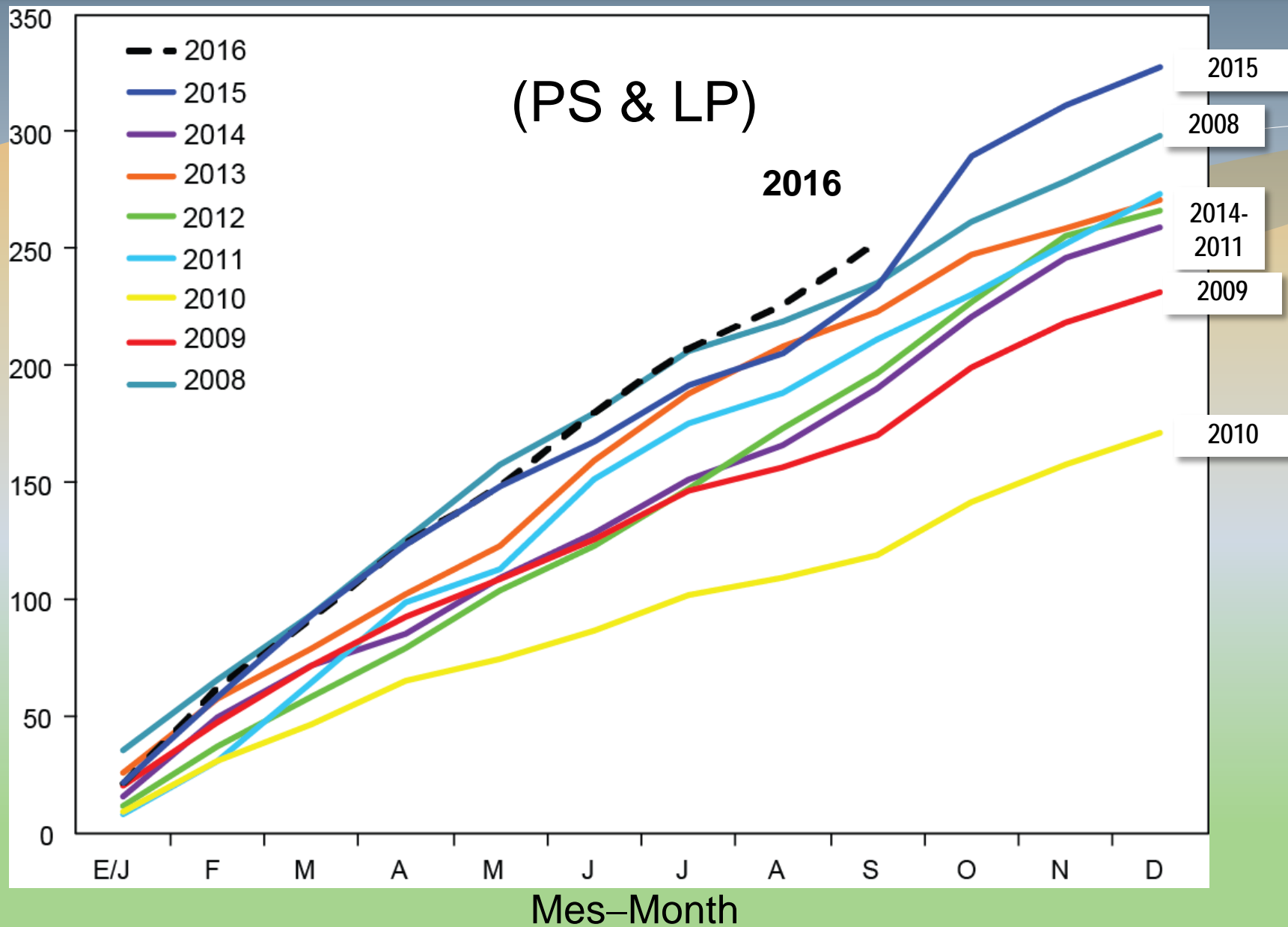
Estimated number of sets, by set type



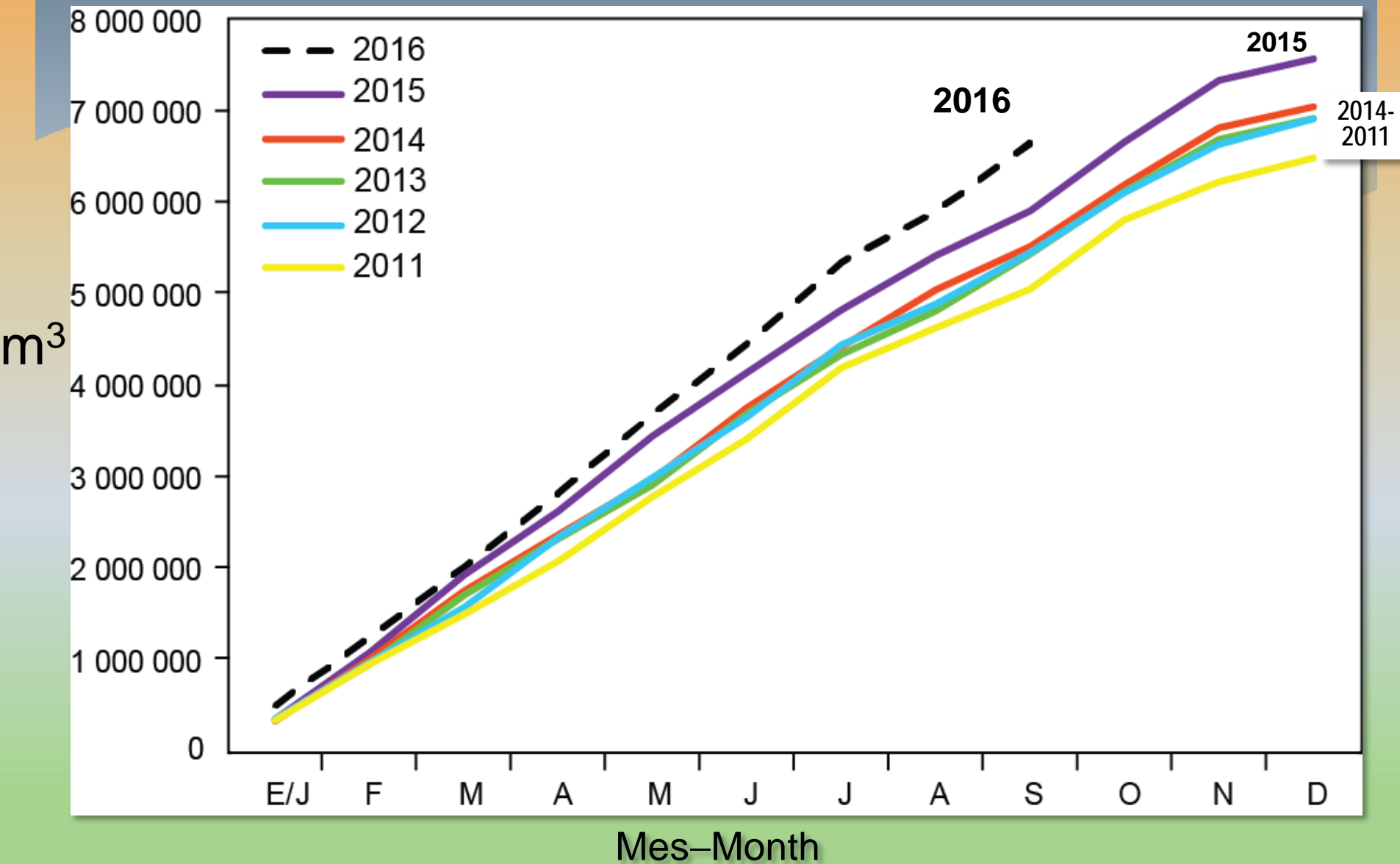
BET - Captura acumulativa – Cumulative catch



SKJ - Captura acumulativa – Cumulative catch



Capacidad acumulativa en el mar–Cumulative capacity at sea



CIAT
IATTC

