

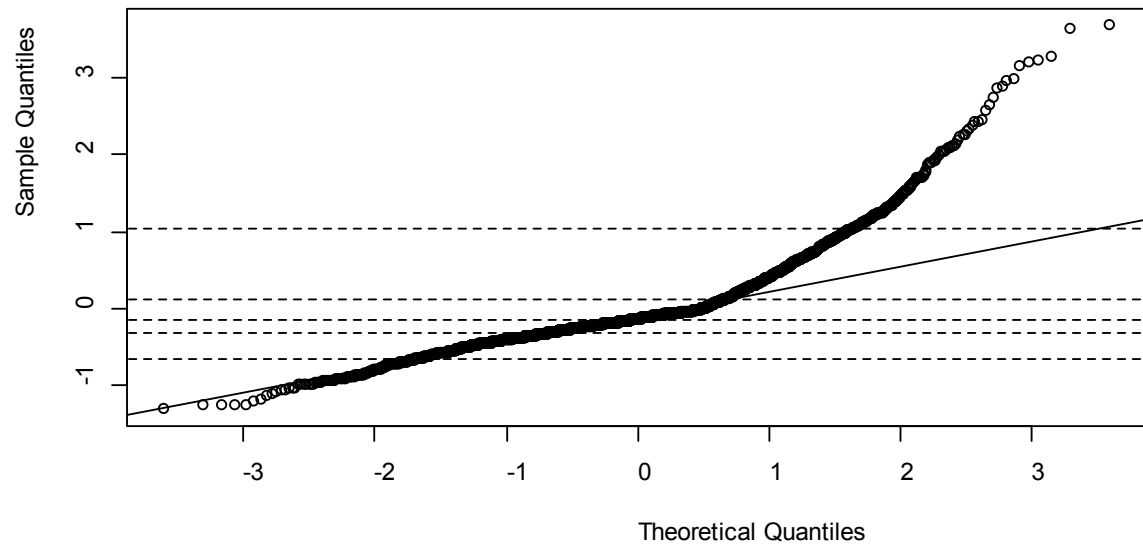
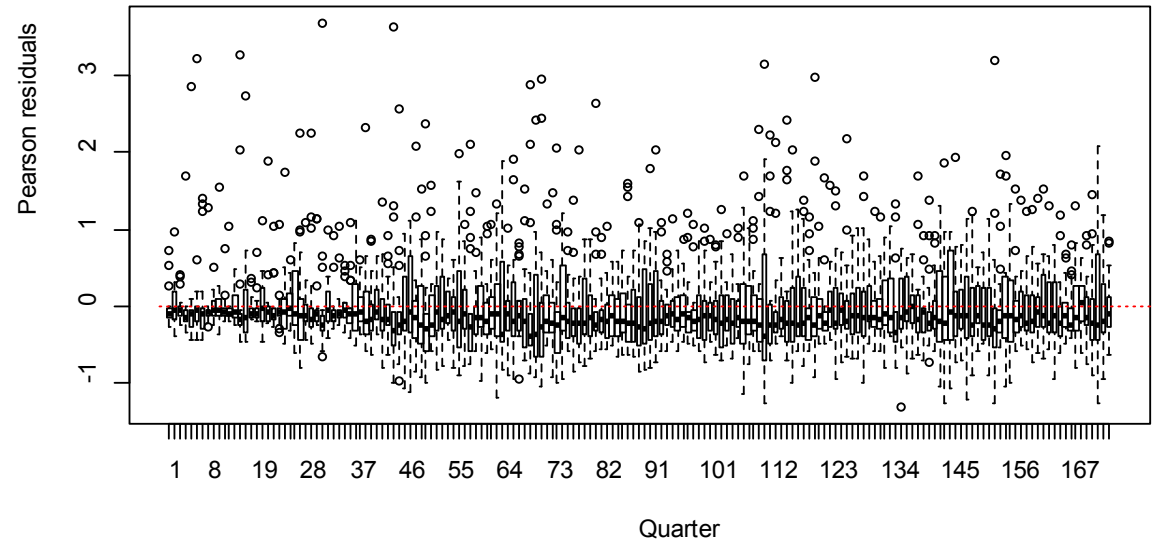
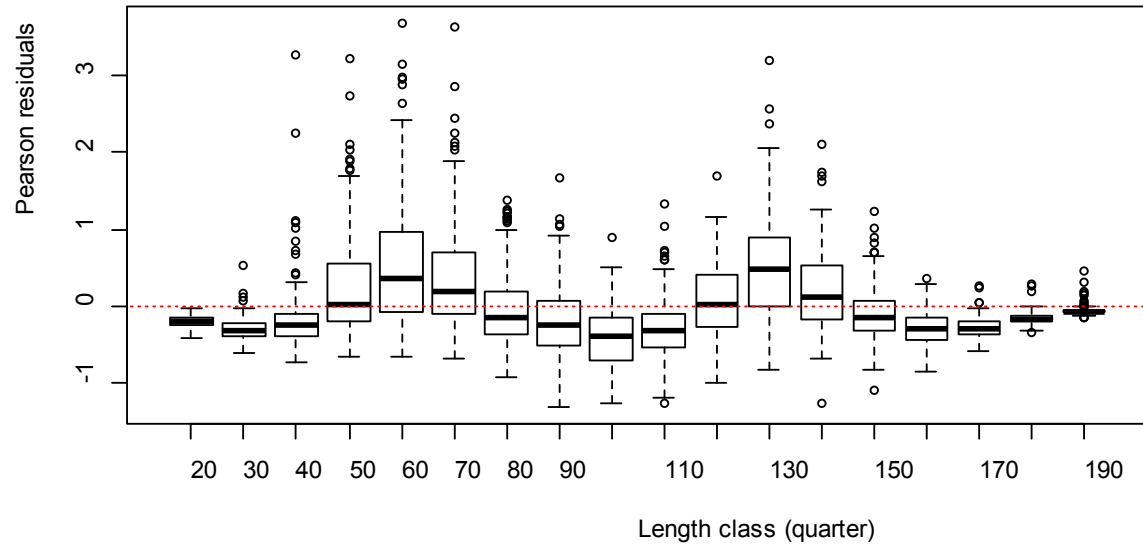
Comisión Interamericana del Atún Tropical  
Inter-American Tropical Tuna Commission



Response to Panel Requests for Thursday

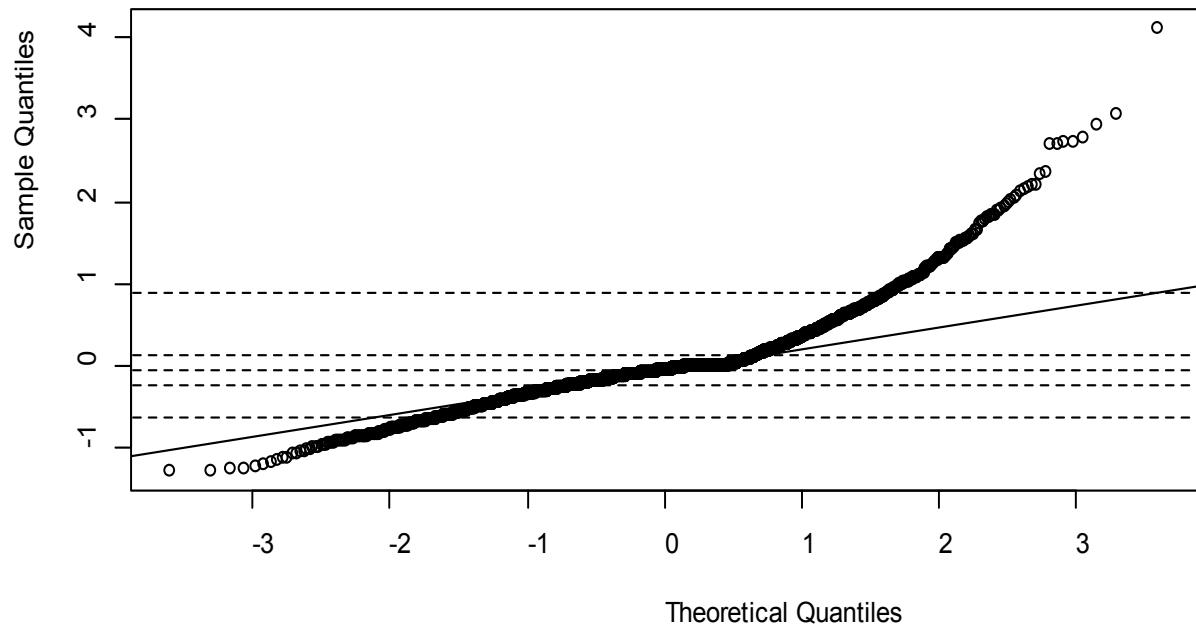
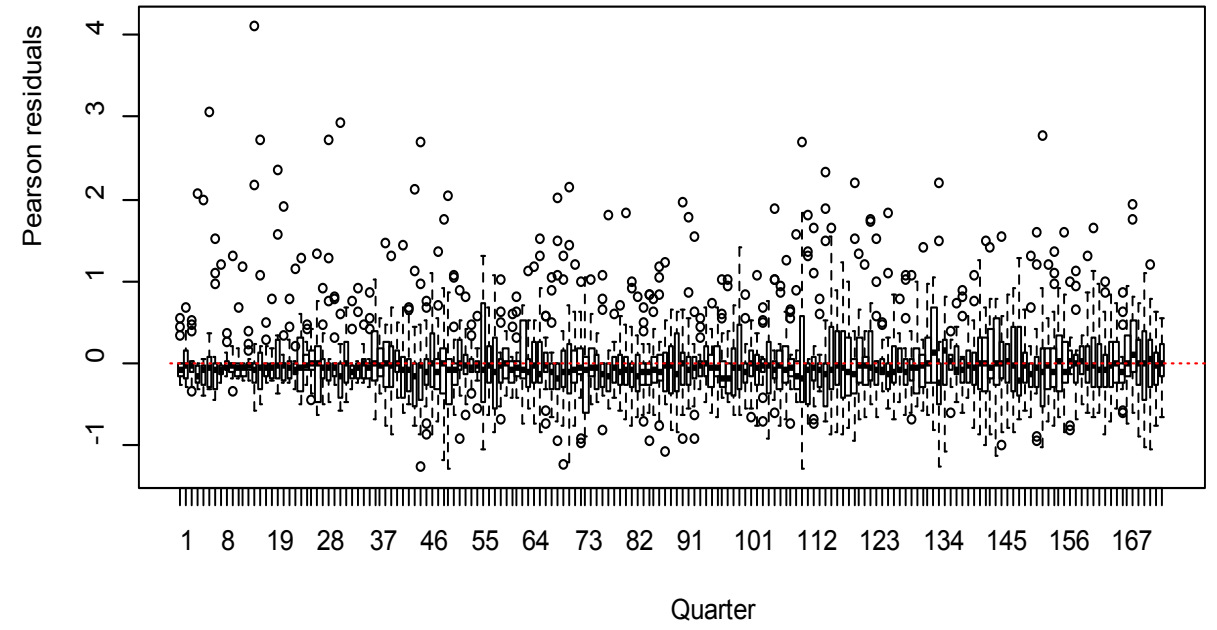
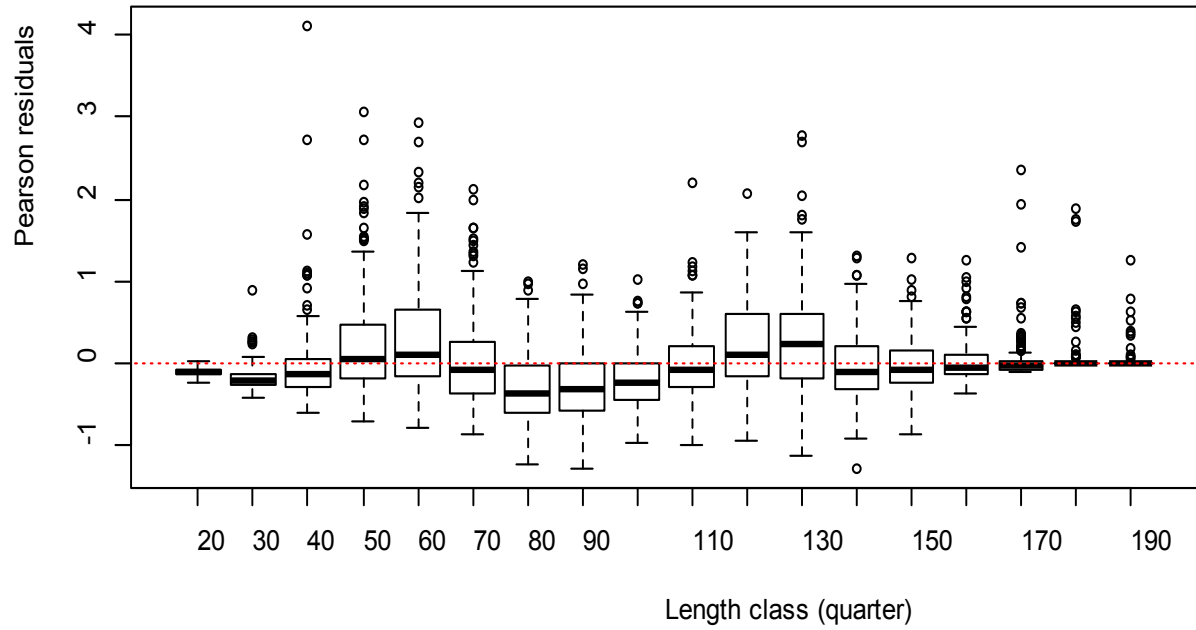
Carolina Minte-Vera

# Pearson residuals for the length composition of the index of abundance (PS\_VAST Fleet 41)



Run 10.0 North with panel requests

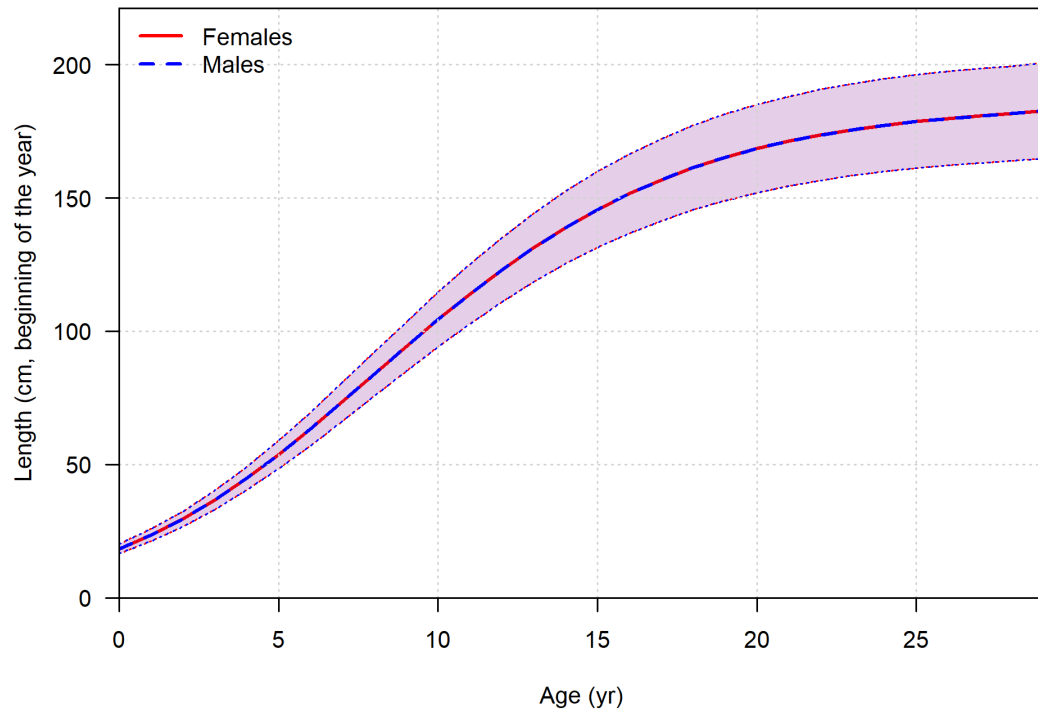
Pearson residuals for the length composition of the index of abundance (PS\_VAST Fleet 41)



P101<-"C:\\YFT4\\10.1 as 8.8 (L2 k est otolith)  
fixed Lsd and panel request\\"

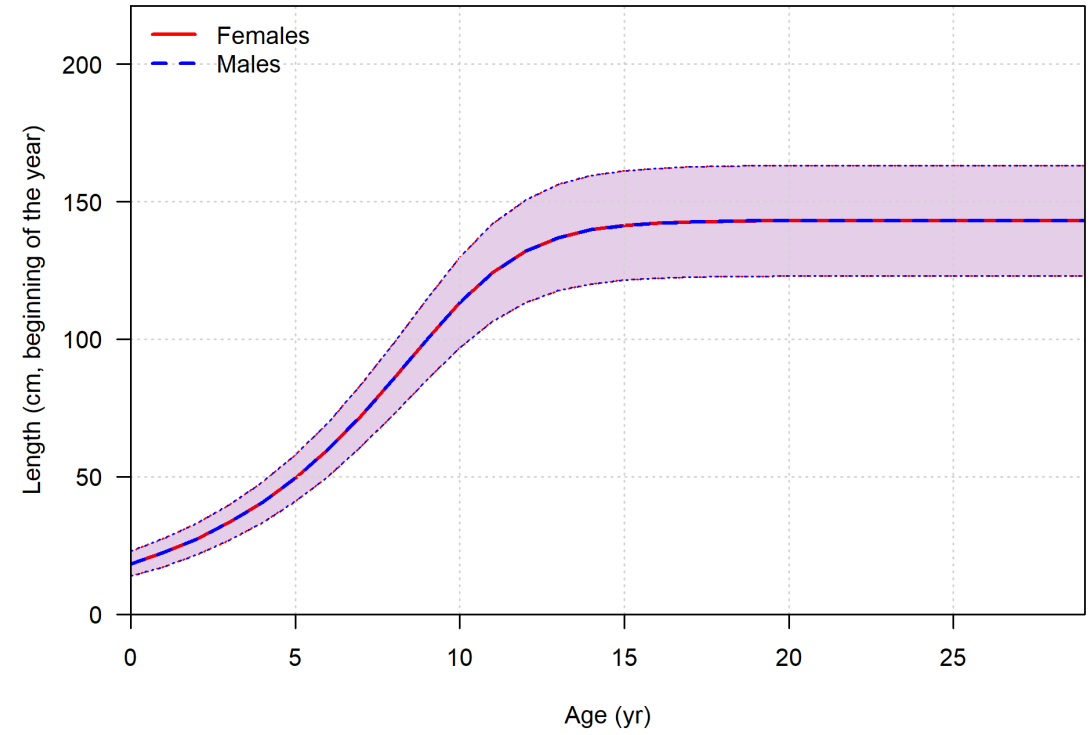
## New North

Ending year expected growth (with 95% intervals)

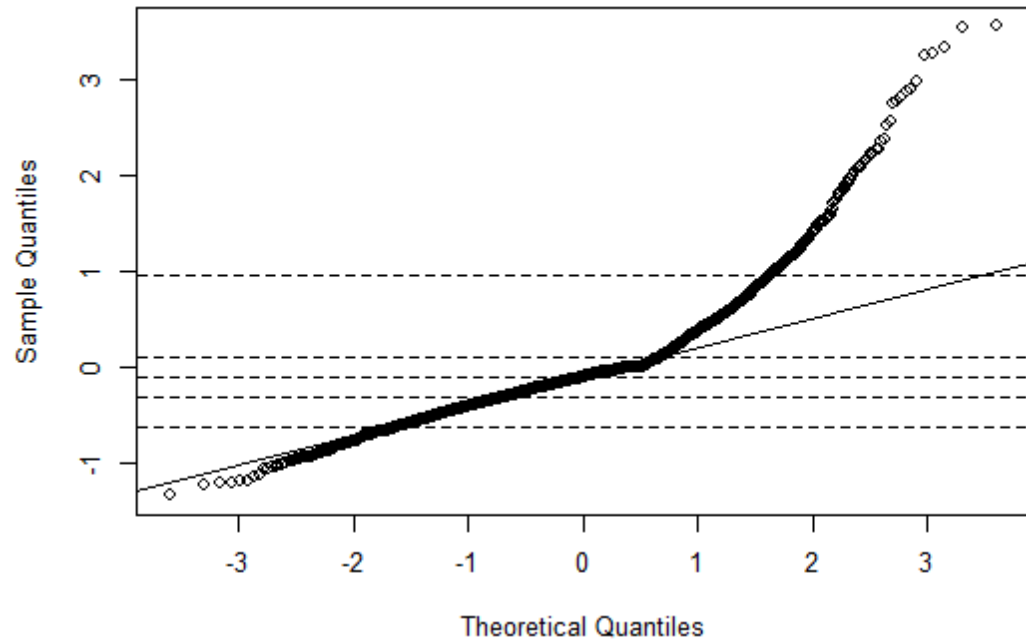
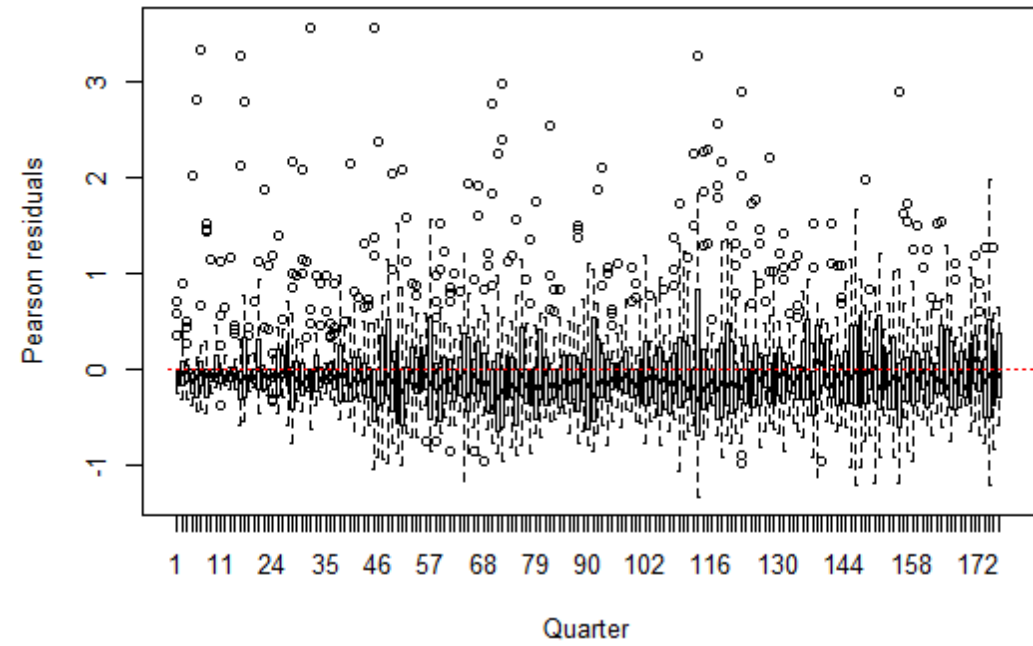
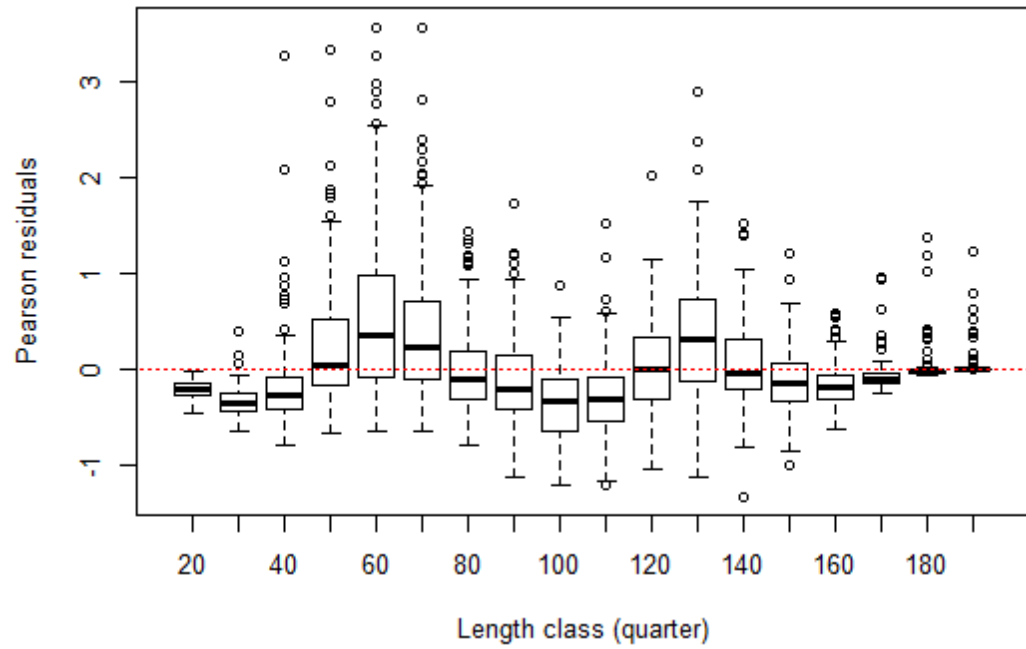


## New North + Estimate Growth

Ending year expected growth (with 95% intervals)

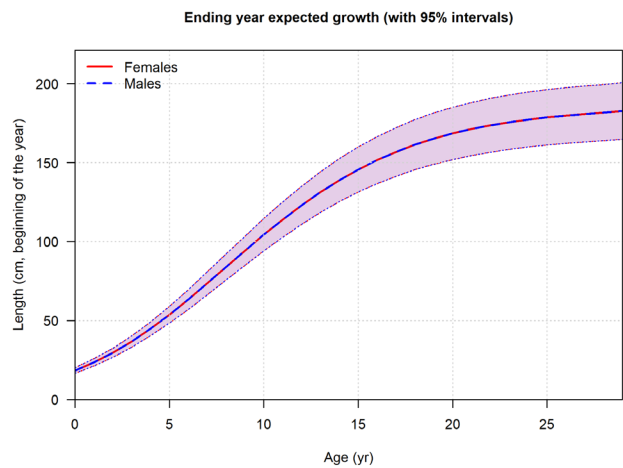


# Pearson residuals for the length composition of the index of abundance (PS\_VAST Fleet 41)

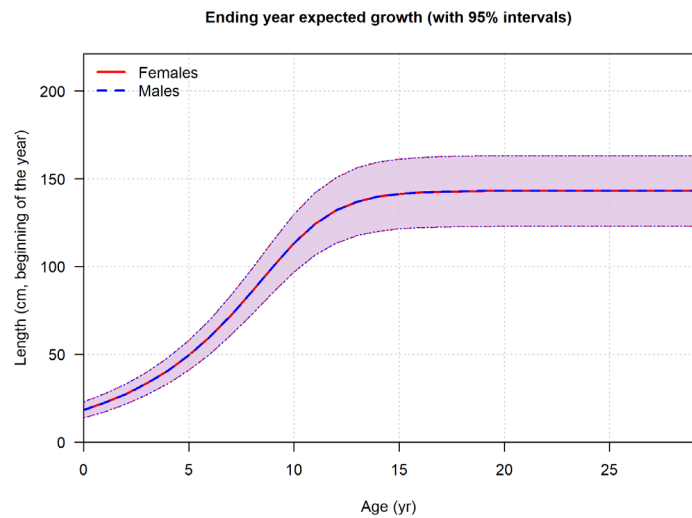


North Estimate Growth also L1

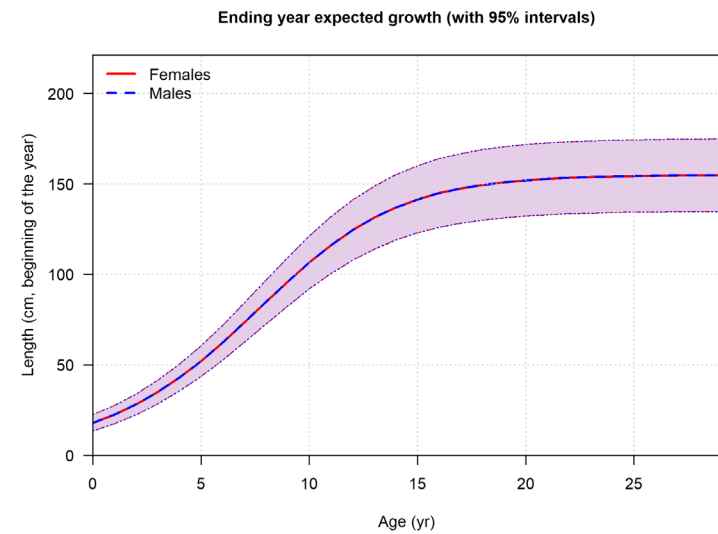
# New North



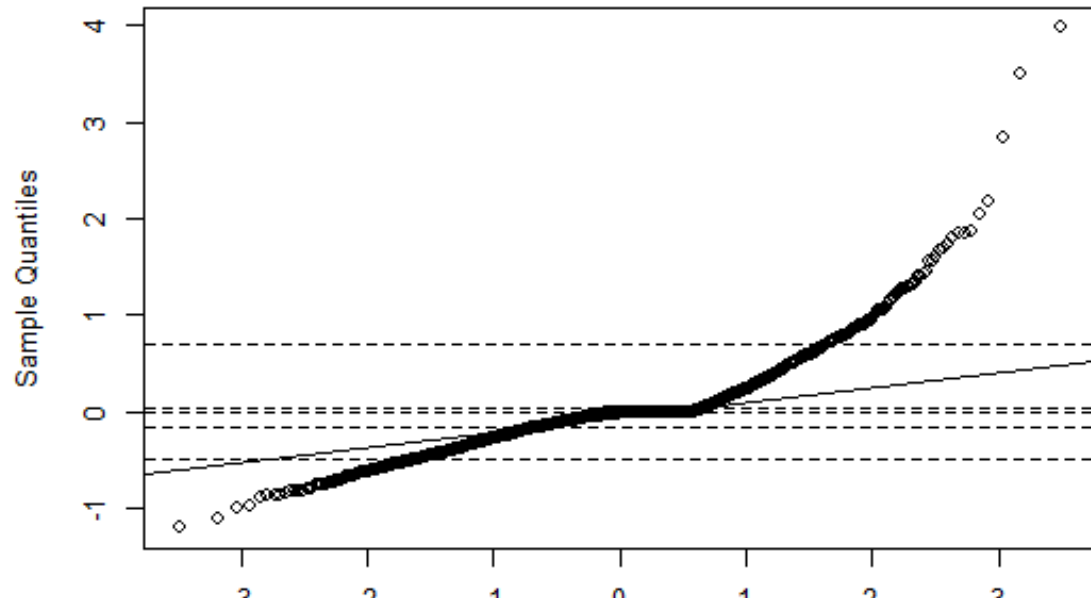
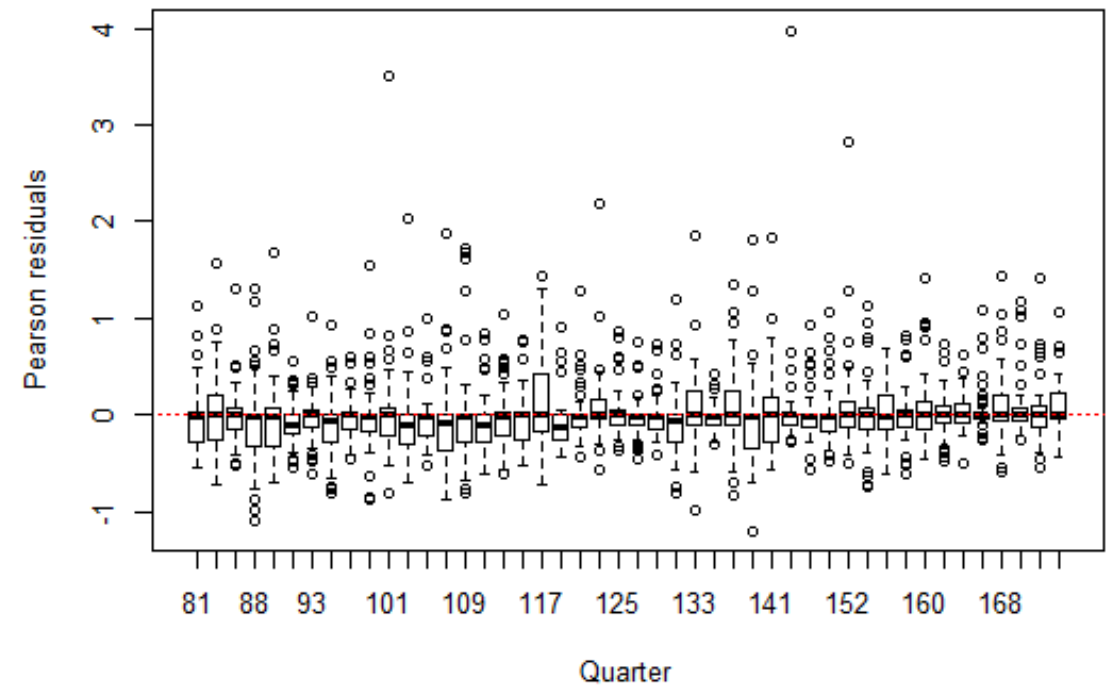
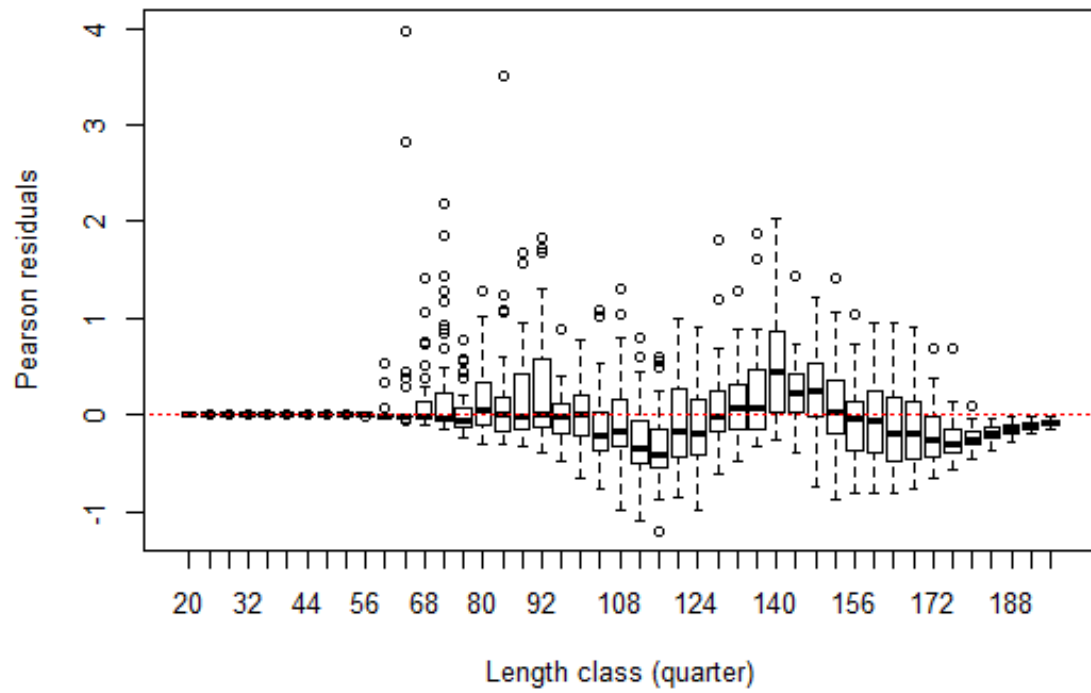
# New North + Estimate Growth



# New North + Estimate Growth with L1

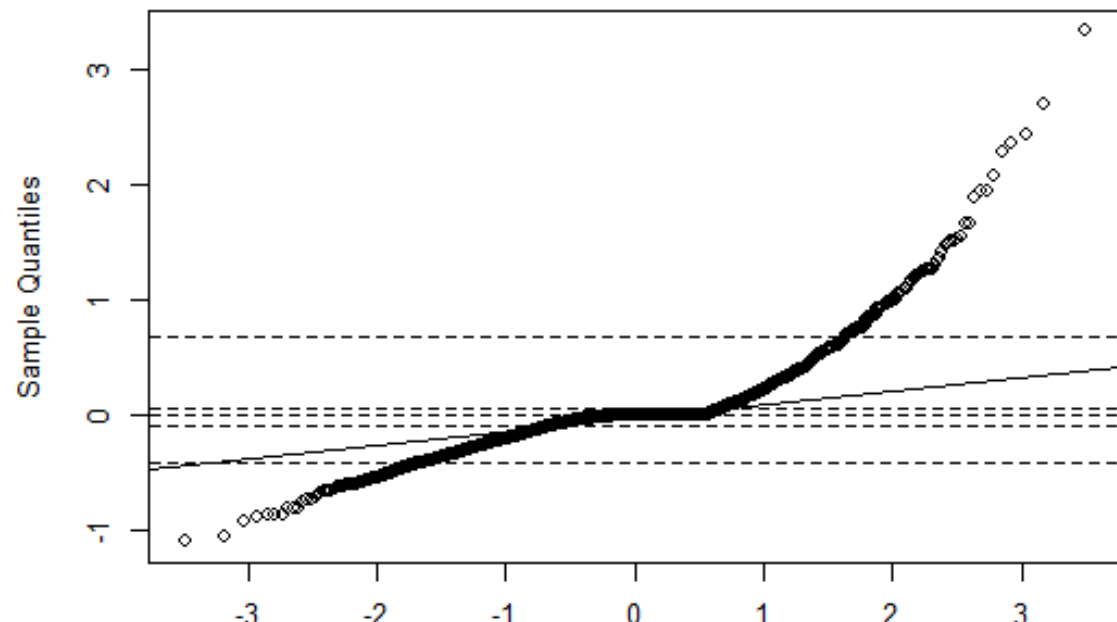
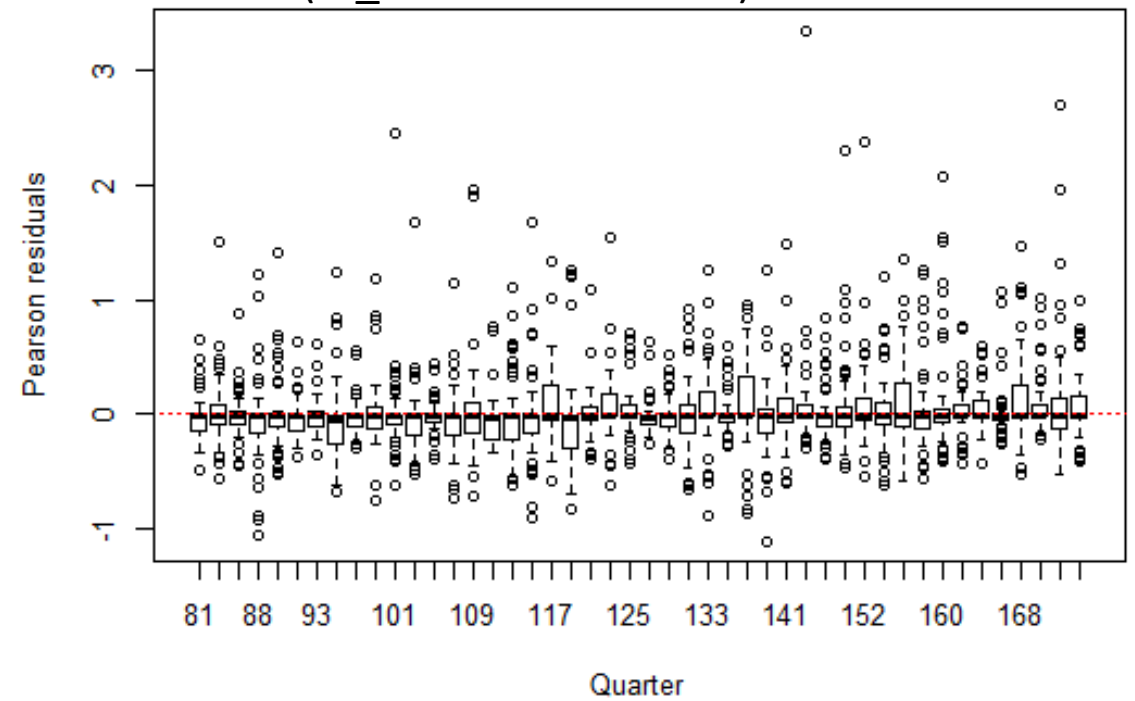
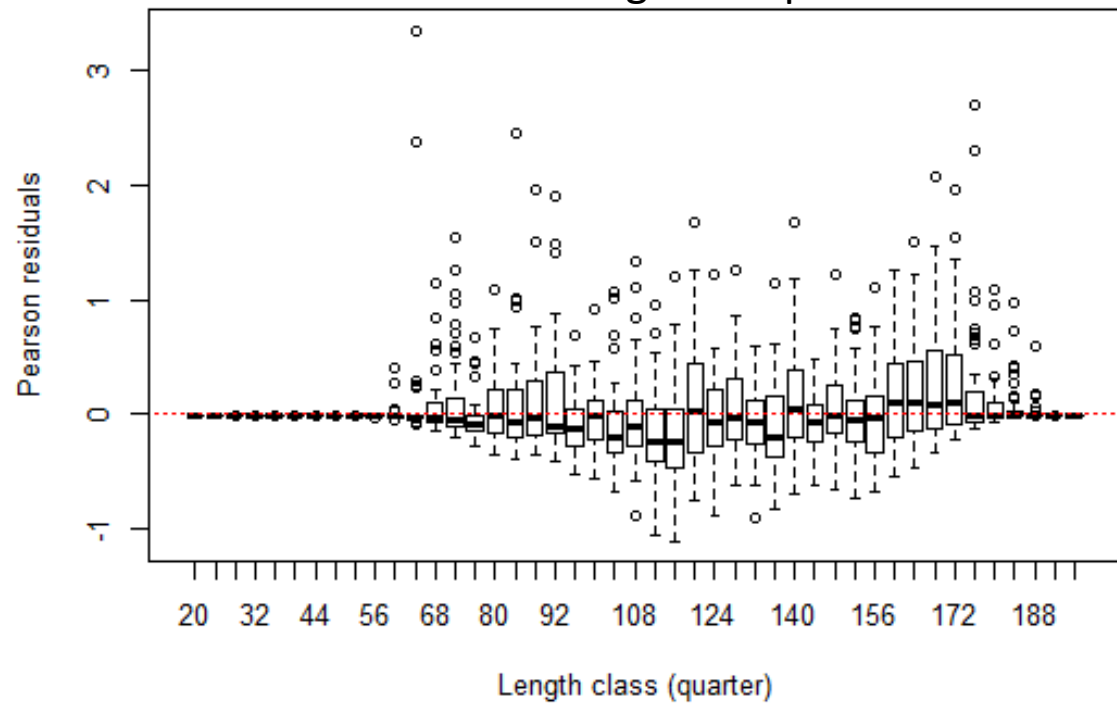


# Pearson residuals for the length composition of the index of abundance (LL\_VAST Q14 Fleet 42)



South with Panel requests

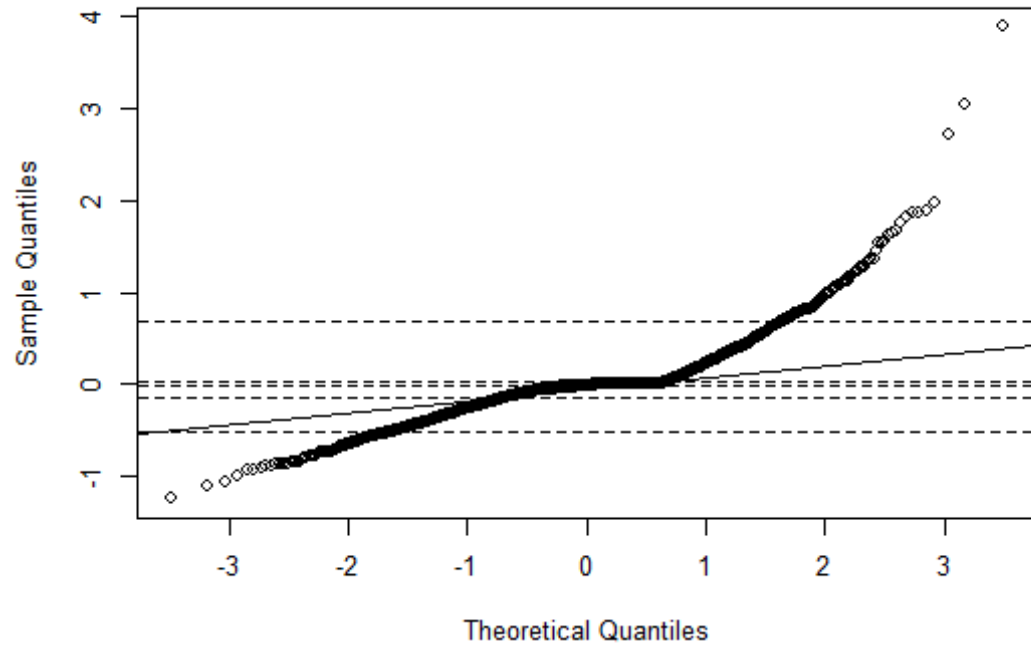
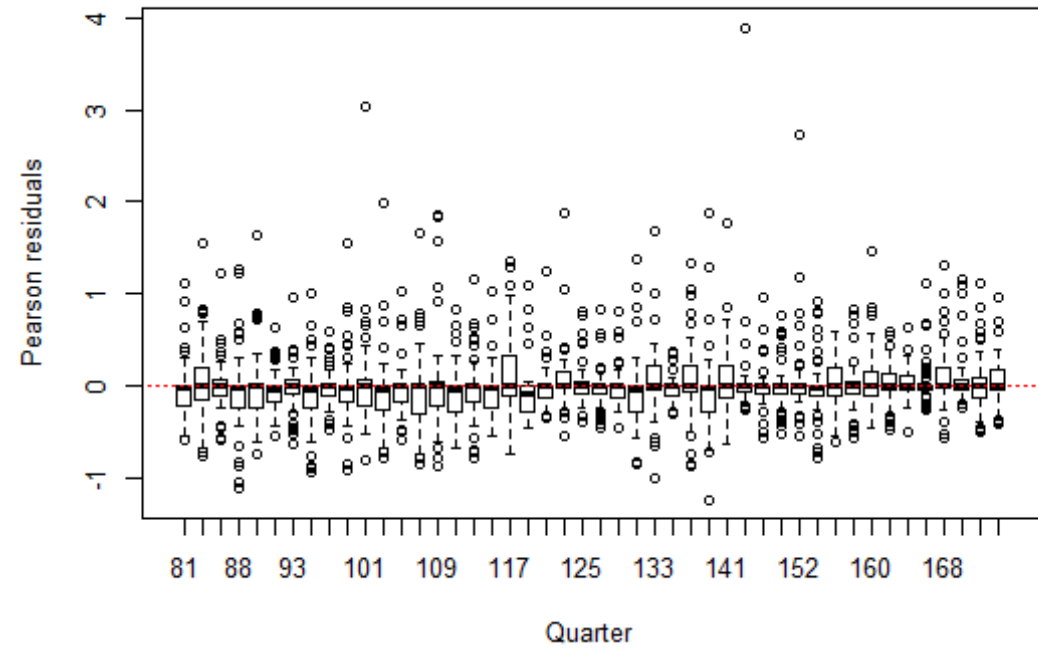
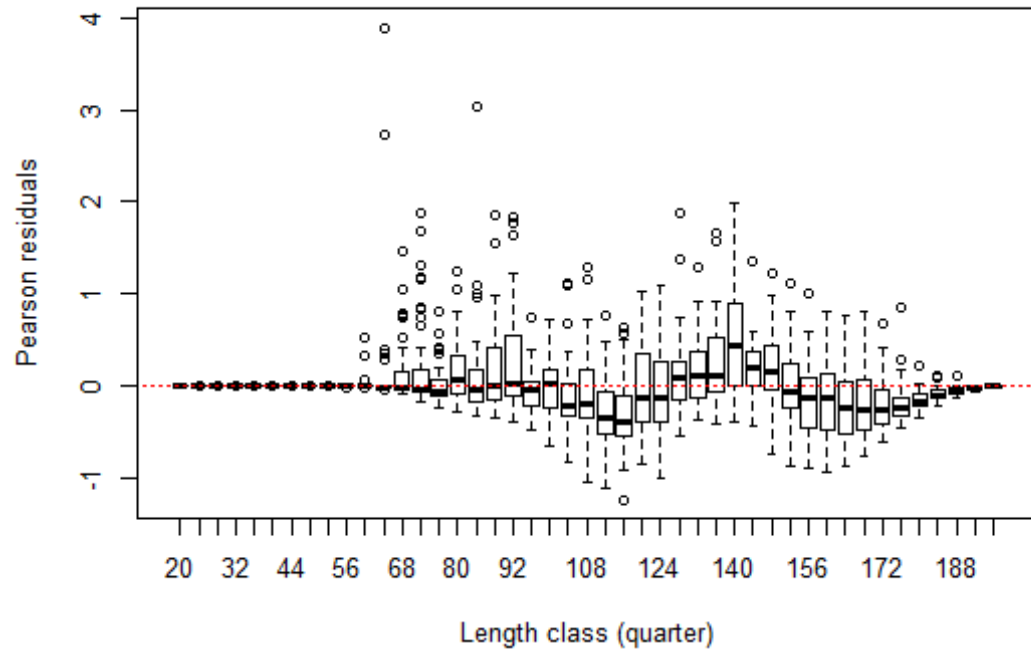
Pearson residuals for the length composition of the index of abundance (LL\_VAST Q14 Fleet 42)



South model with Panel requests



# Pearson residuals for the length composition of the index of abundance (LL\_VAST Q14 Fleet 42)

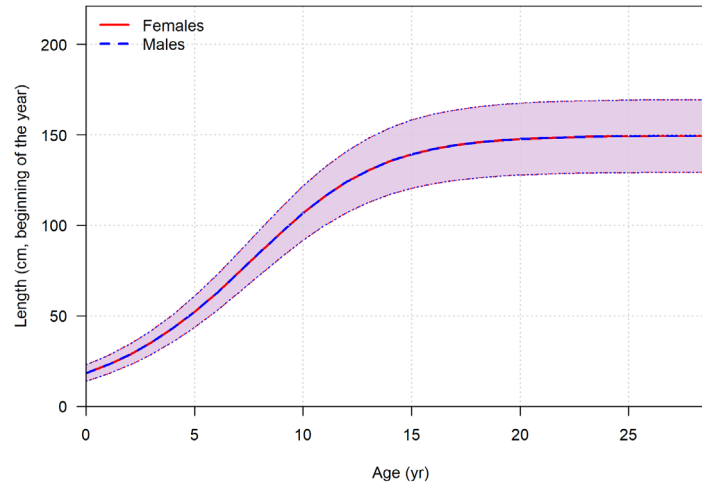


South with Panel alternative growth (tag + otol)

# South with Panel requests

## Est growth

Ending year expected growth (with 95% intervals)



## Fixed Growth to tag+oto

Ending year expected growth (with 95% intervals)

