

Comisión Interamericana del Atún Tropical–Inter-American Tropical Tuna Commission



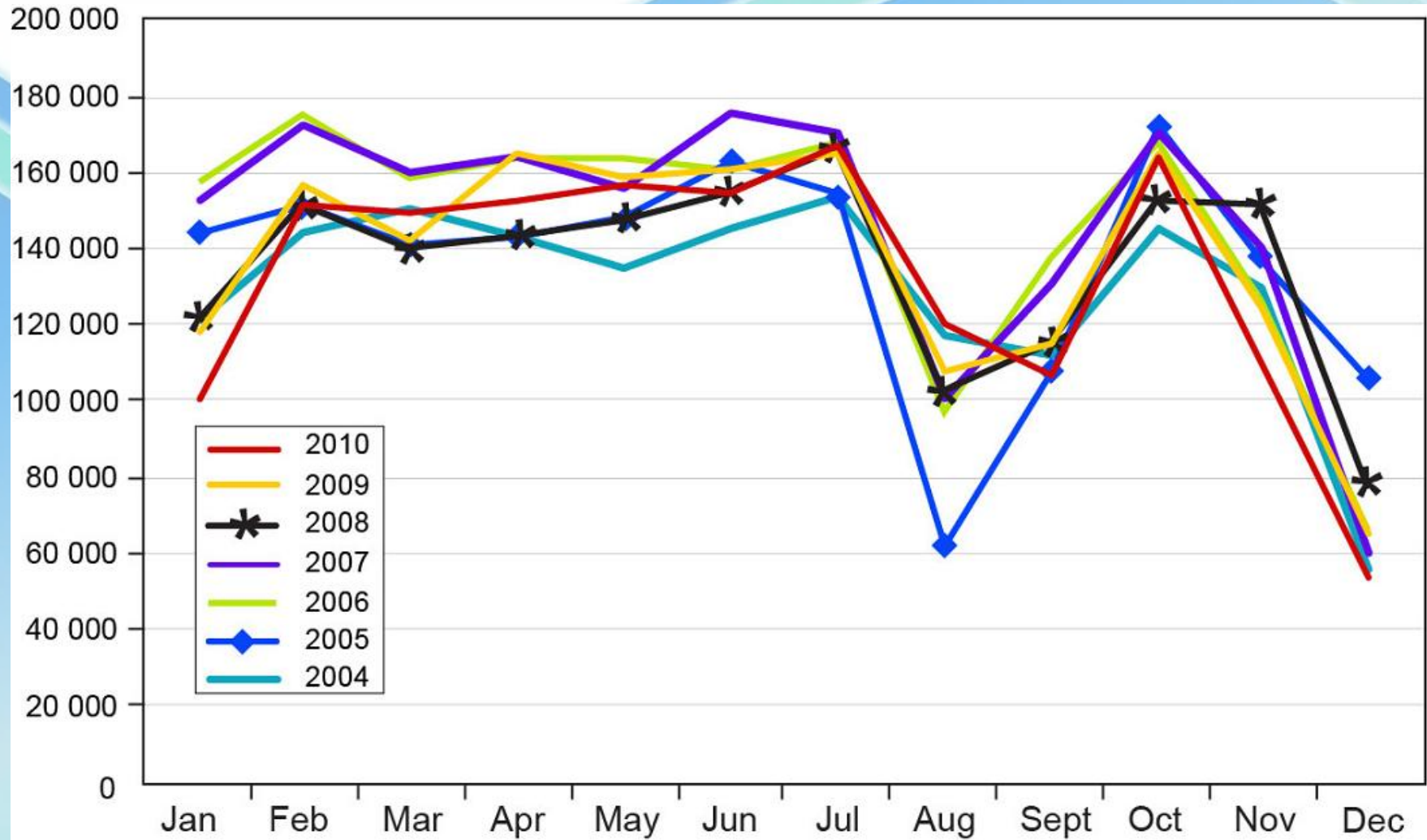
---

**Comisión Interamericana del Atún Tropical  
Inter-American Tropical Tuna Commission**

---

# Average capacity (cm) of purse-seine and pole-and-line vessels at sea in the EPO in 2004-2010 by month

m<sup>3</sup>

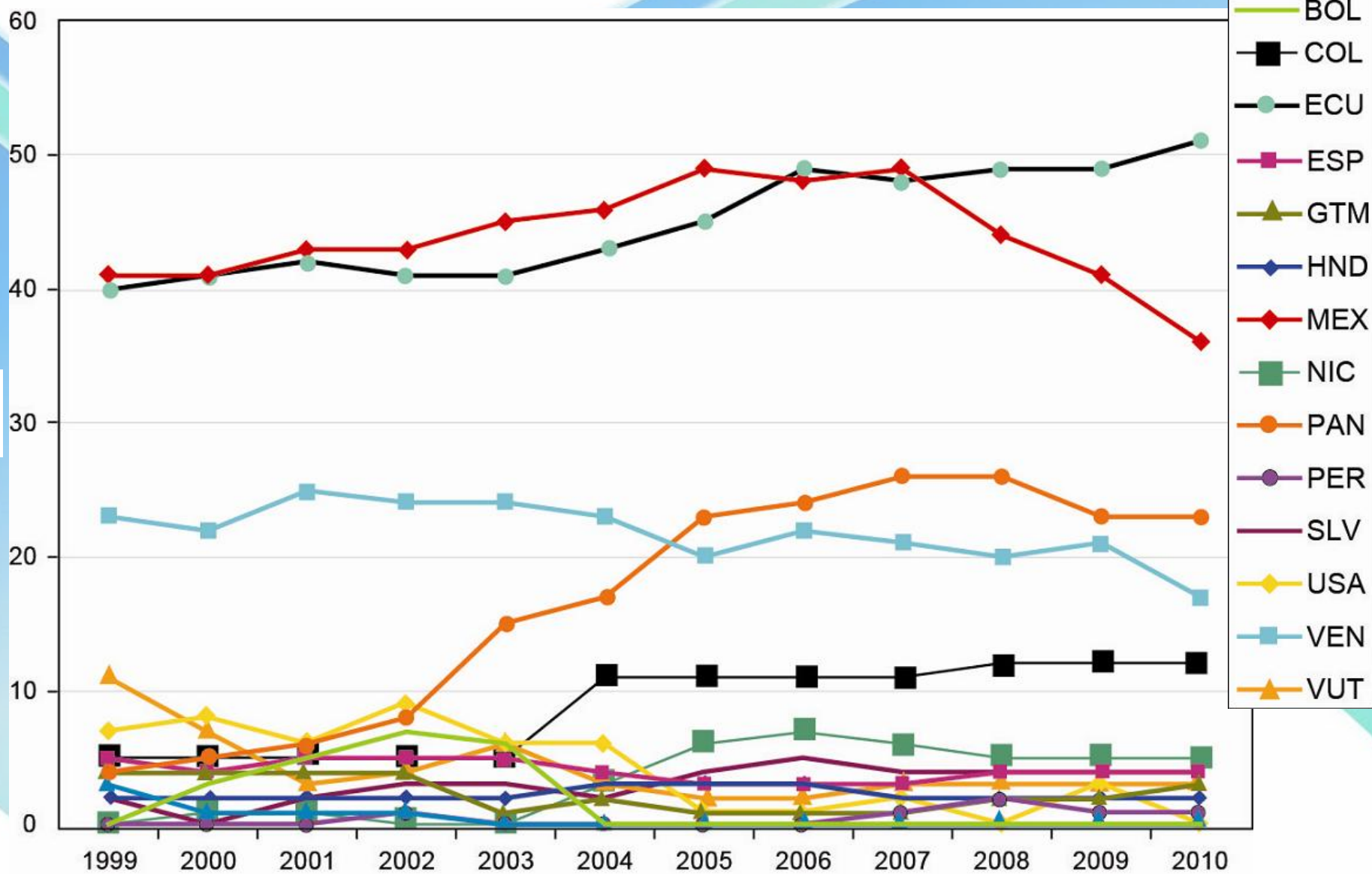


## Special Capacity Allocations

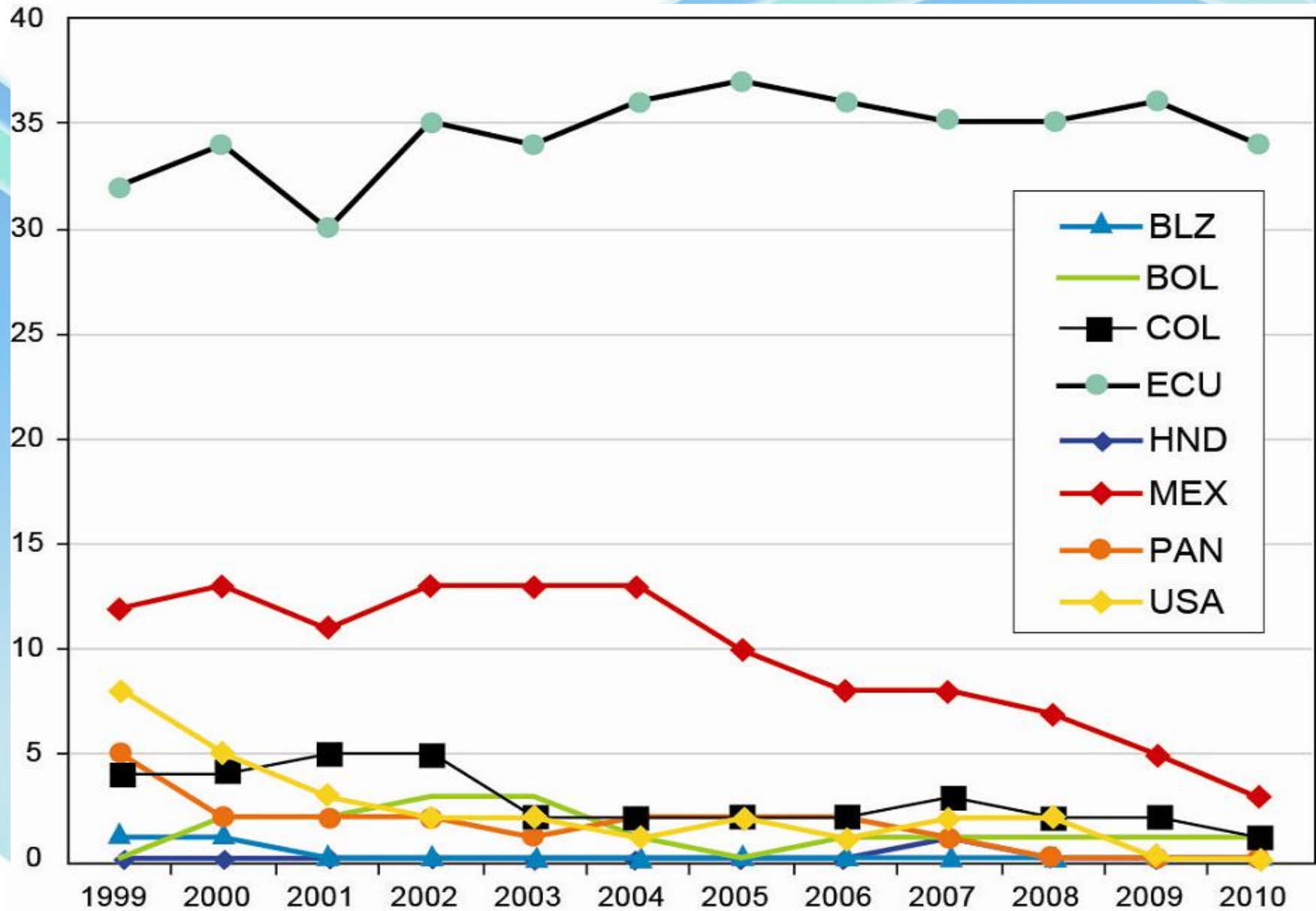
The current situation regarding the utilization of these special capacity allocations is:

	Limit (m <sup>3</sup> )	
	Provided	Remaining
Costa Rica	9364	7483
El Salvador	861	30
Guatemala	1700	0
Nicaragua	5300	0
Peru	3195	2195

# Estimates of the number of purse-seine vessels (>400 m<sup>3</sup>) that fished in the EPO during the period 1999-2010

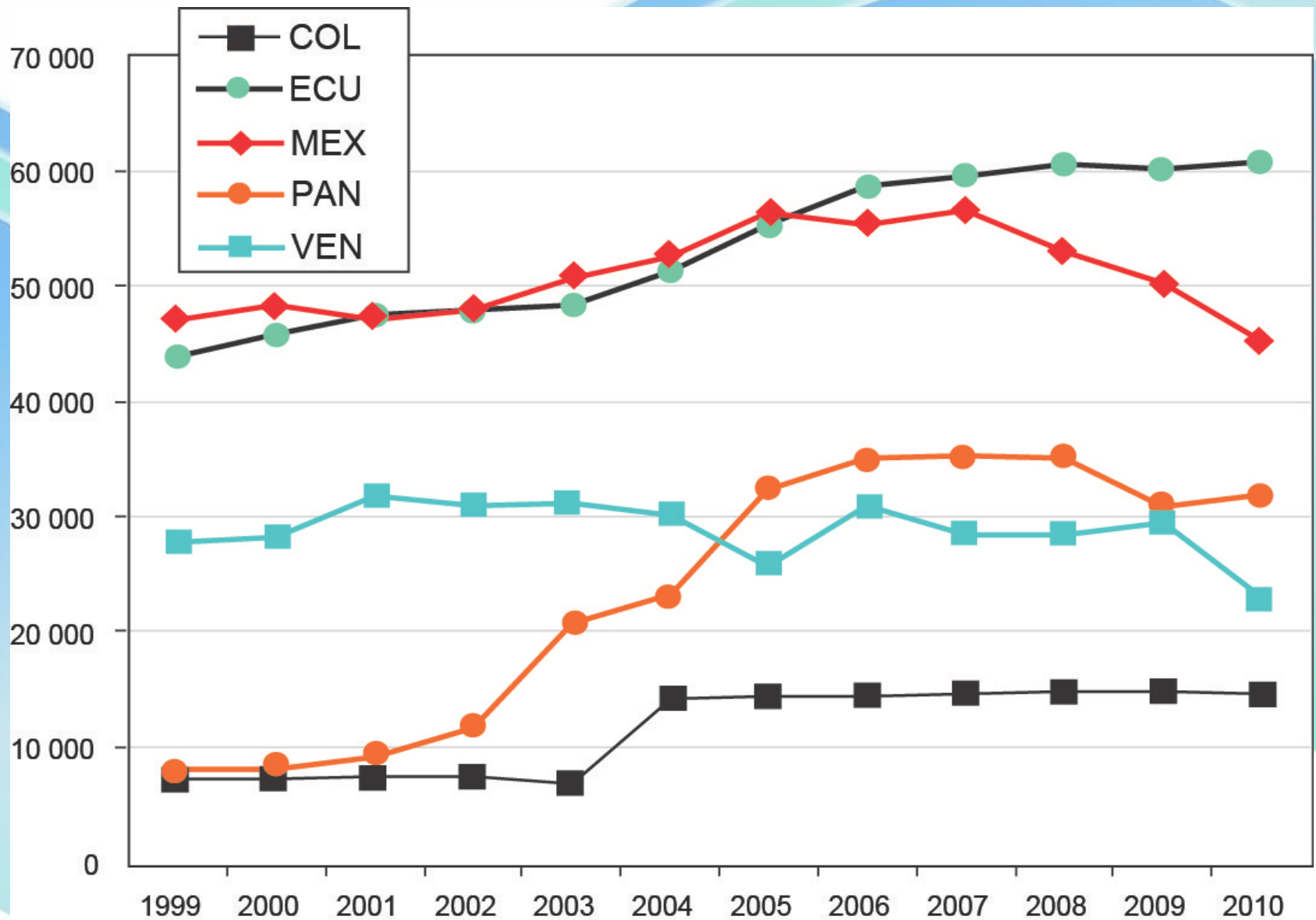


# Estimates of the number of purse-seine vessels (<math><400\text{ m}^3</math>) that fished in the EPO during the period 1999-2010



n

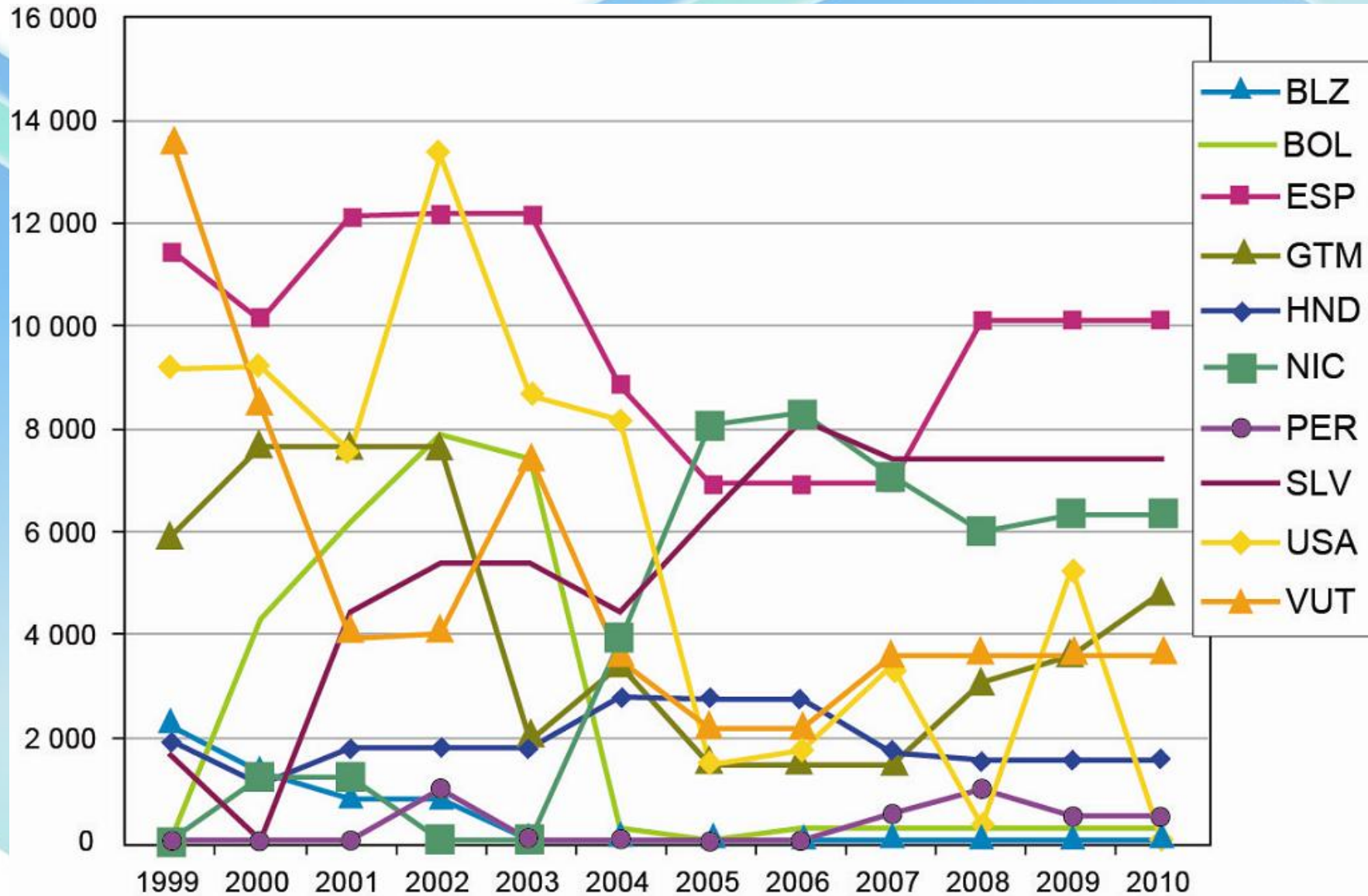
# Well volume (cubic meters) of the principal fleets of purse-seine vessels that fished in the EPO in 1999-2010



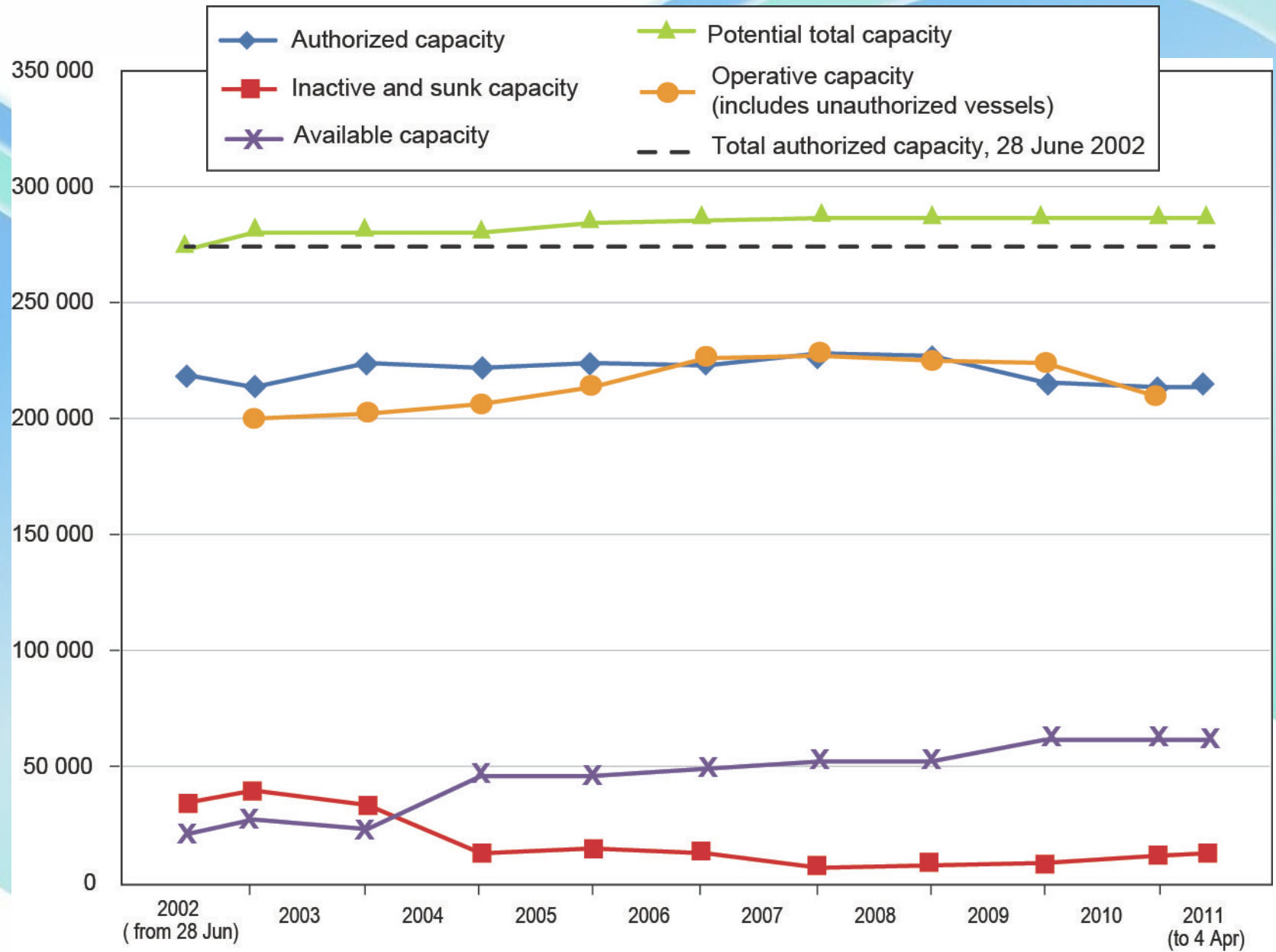
m<sup>3</sup>

# Well volume (cubic meters) of the smaller fleets of purse-seine vessels that fished in the EPO in 1999-2010

m<sup>3</sup>

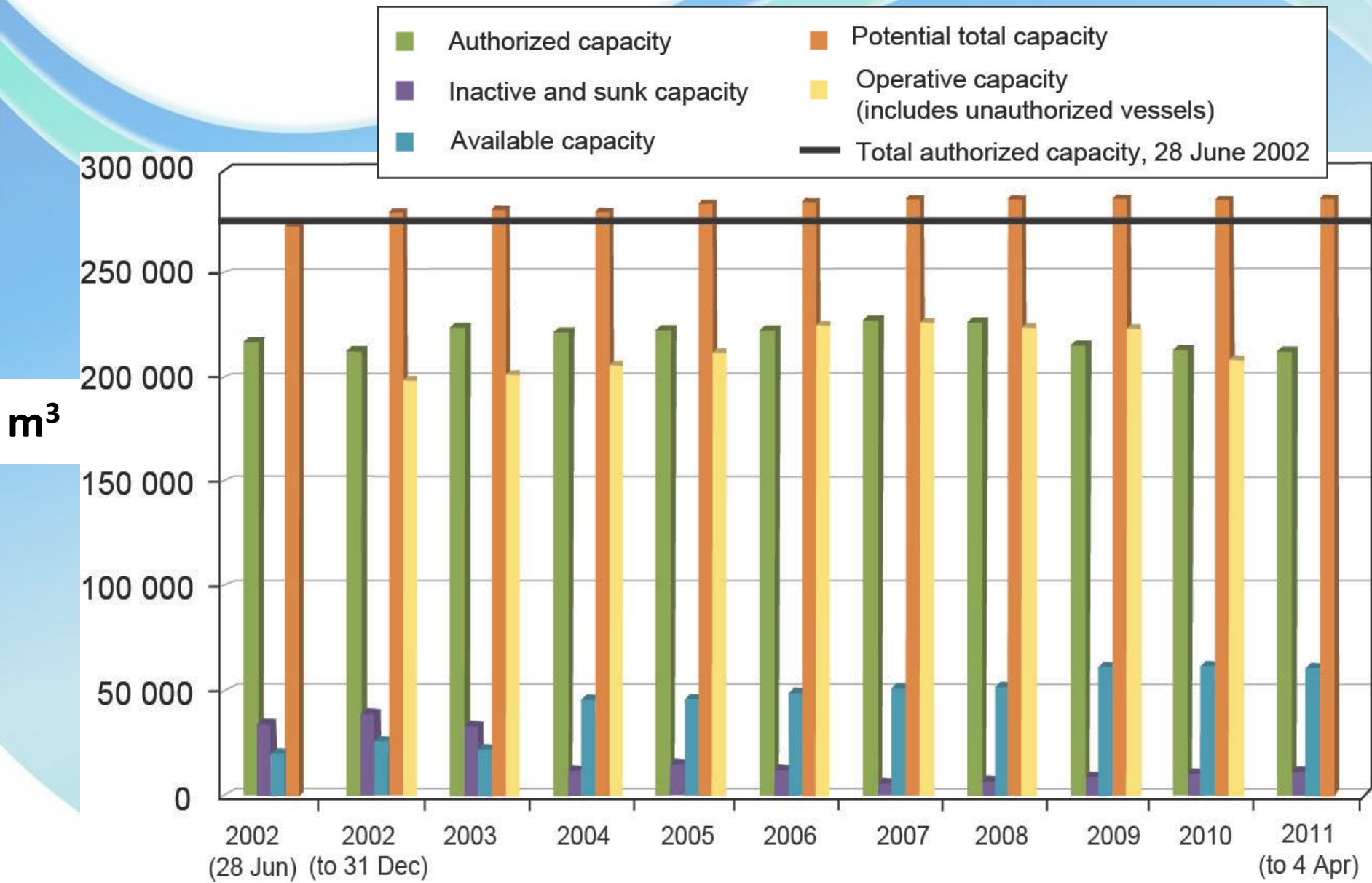


# Purse-Seine fleet capacity in the EPO, 2002-2011





# Purse-Seine fleet capacity in the EPO, 2002-2011



**Table - Purse-Seine fleet capacity in the EPO, 2002-2011**

Dates	Authorized capacity	Inactive and sunk capacity	Available capacity	Potential total capacity	Operative capacity	Total authorized capacity, 28 Jun 2002
28 Jun 2002	218482	34565	20420	273467		273467
31 Dec 2002	213453	40085	27346	280884	199870	
31 Dec 2003	224589	33595	22576	280760	202755	
31 Dec 2004	222254	12083	45993	280330	206473	
31 Dec 2005	223996	14896	45621	284513	213286	
31 Dec 2006	223277	12843	49488	285608	225950	
31 Dec 2007	228819	6019	51886	286724	226985	
31 Dec 2008	227481	7110	52032	286623	225030	
31 Dec 2009	216137	8816	61883	286836	223995	
31 Dec 2010	214002	11555	61229	286786	209600	
4 Apr 2011	213421	12136	61229	286786		