

# Comisión Interamericana del Atún Tropical Inter-American Tropical Tuna Commission



## STOCK STATUS INDICATORS (SSIs) FOR TROPICAL TUNAS IN THE EASTERN PACIFIC OCEAN

IATTC Staff

12<sup>a</sup> Reunión del Comité Científico Asesor - 10-14 de mayo de 2021 (por videoconferencia)  
12<sup>th</sup> Meeting of the Scientific Advisory Committee - 10-14 May 2021 (by videoconference)

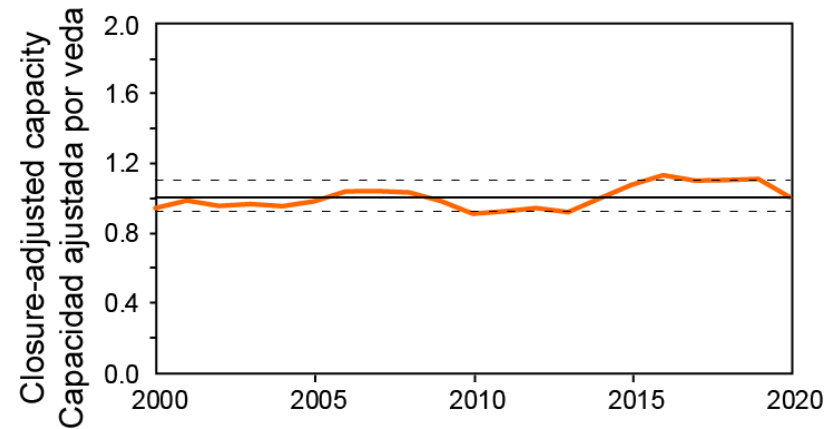
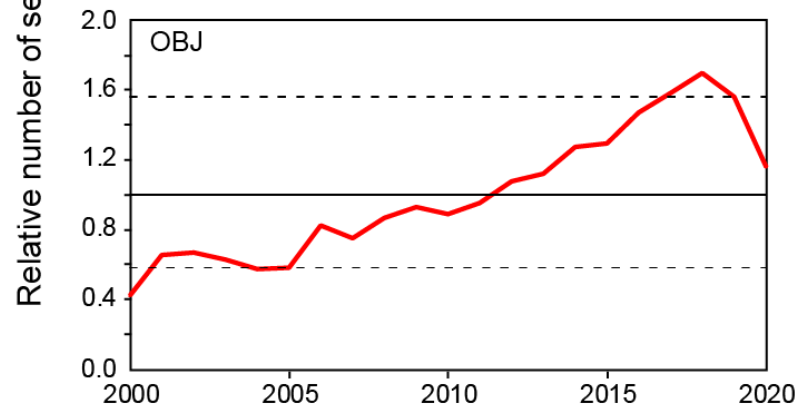
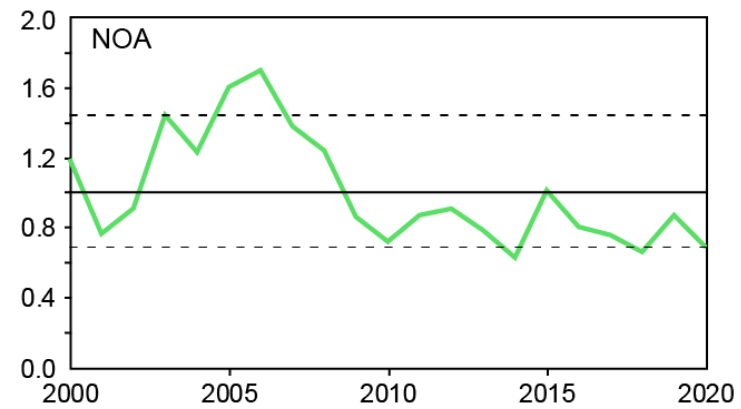
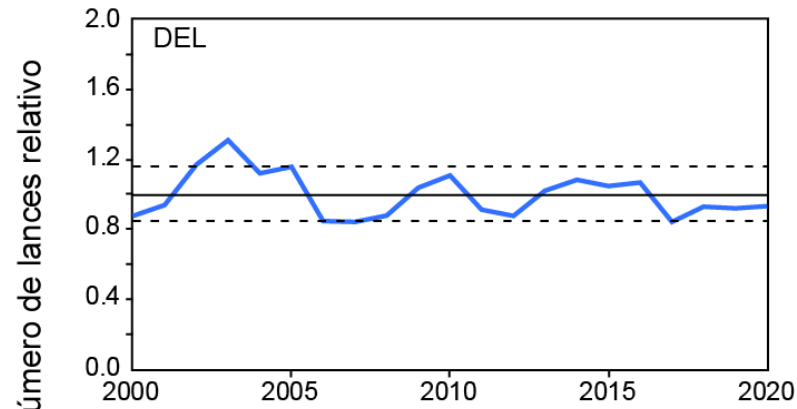
# Outline

- Introduction
- Purse seine based indicators
- Longline based indicators
- Summary

# Introduction

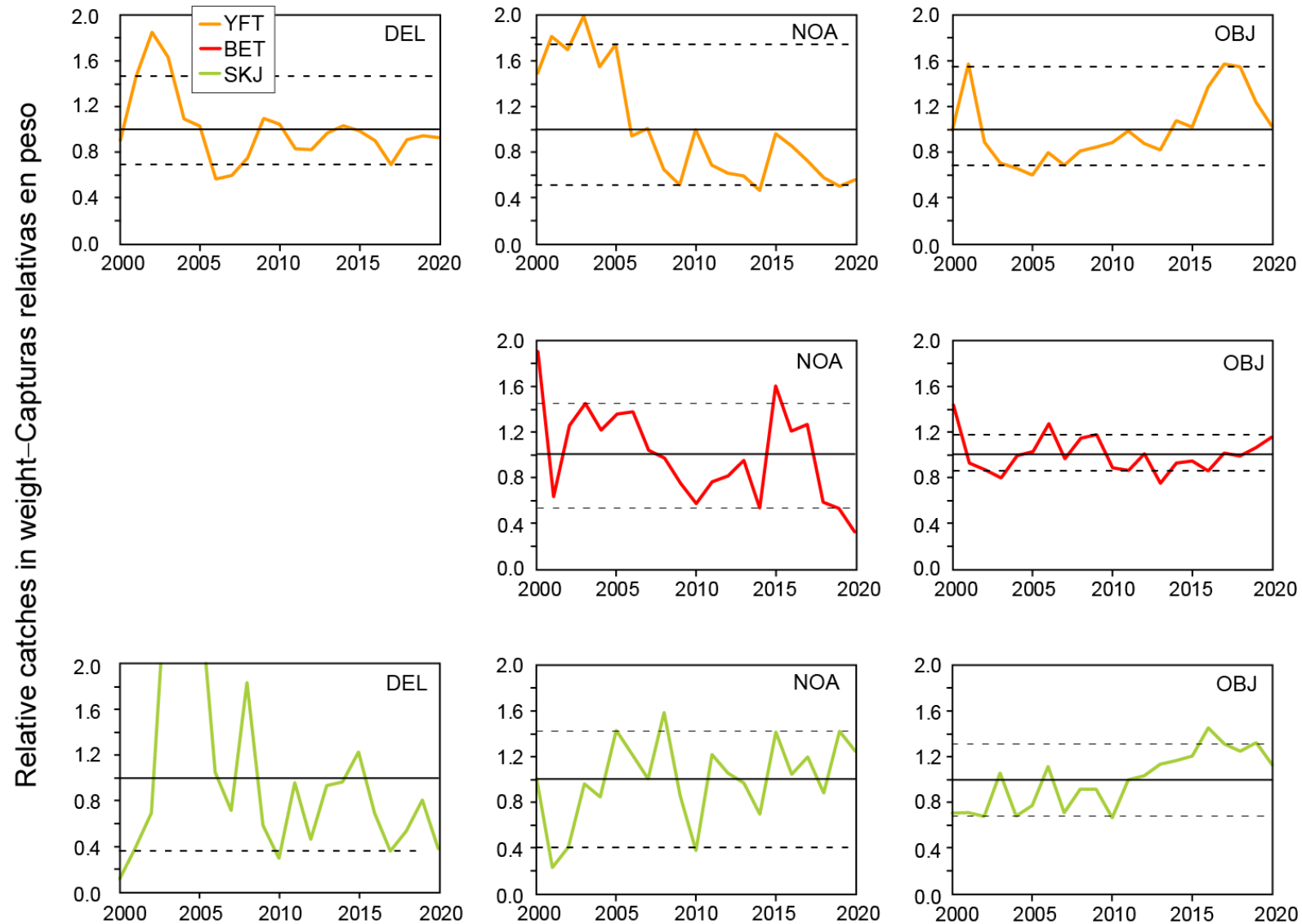
- Data: Purse-seine and longline
- Species: Yellowfin, bigeye, and skipjack
- SSIs:
  - Catch, effort, CPUE, and average length
  - Begin in 2000
    - First year of purse seine species composition sampling
    - After the major offshore expansion of the floating-object fishery
  - Reference levels set at the 10% and 90% percentiles.
- 2020 is an anomalous year due to the COVID pandemic

# Purse seine: Number of sets by set type



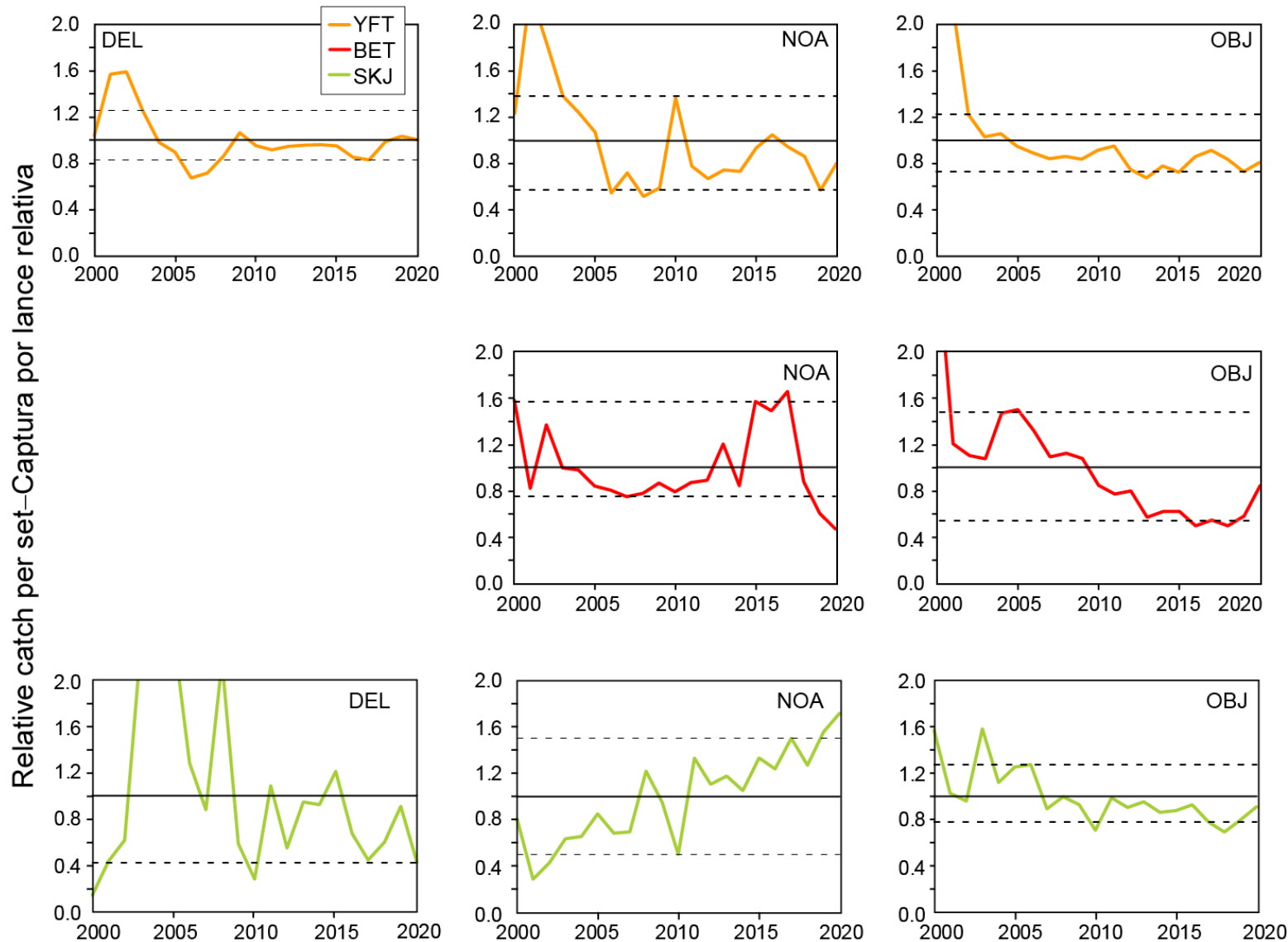
- Constantly increasing number of floating object sets
- OBJ sets declined in 2020 due to the COVID pandemic

# Purse seine: Catch in weight by species and set type



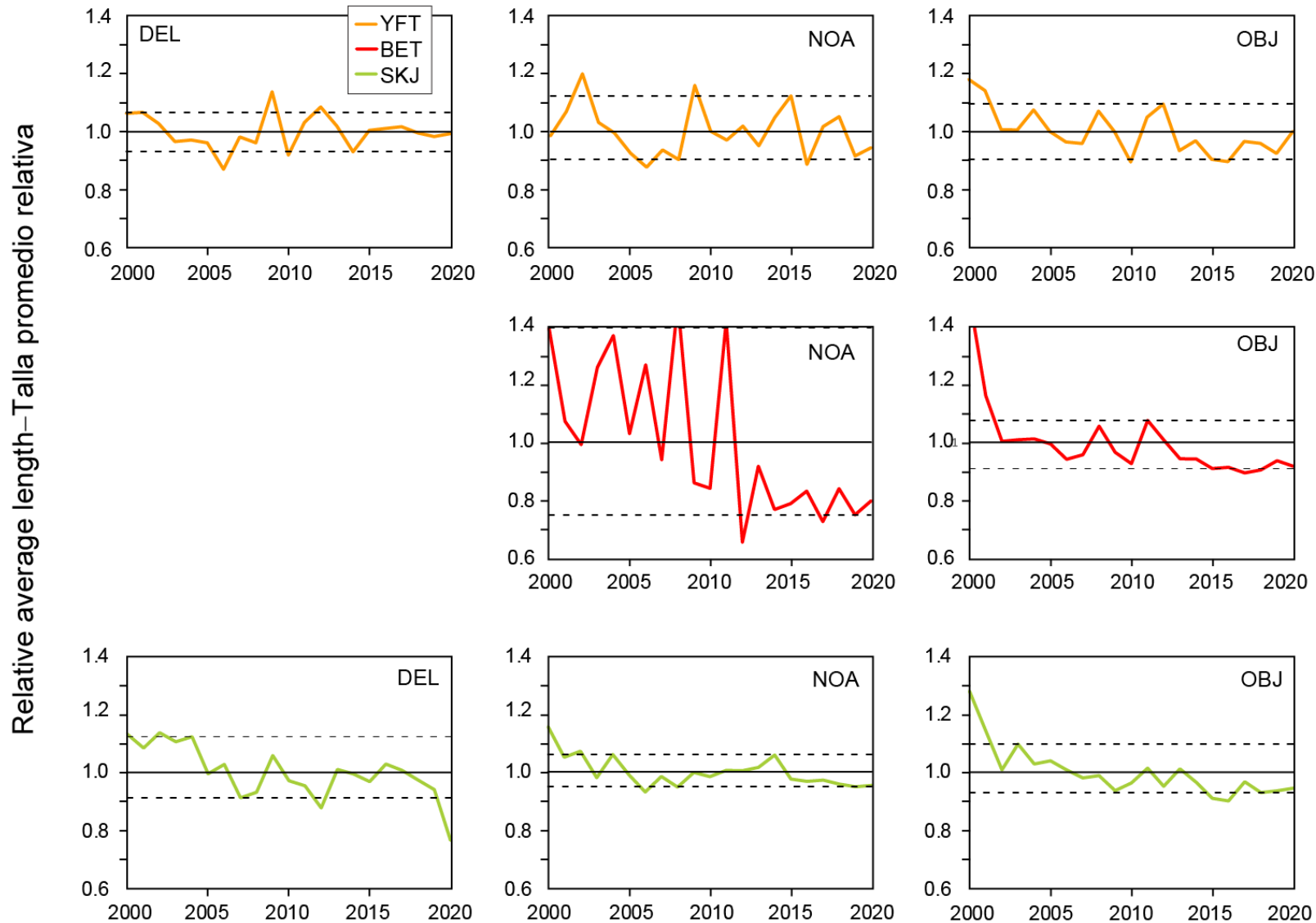
- Increase in the catch of YFT and SKJ in the floating object fishery

# Purse seine: Catch per set by species and set type



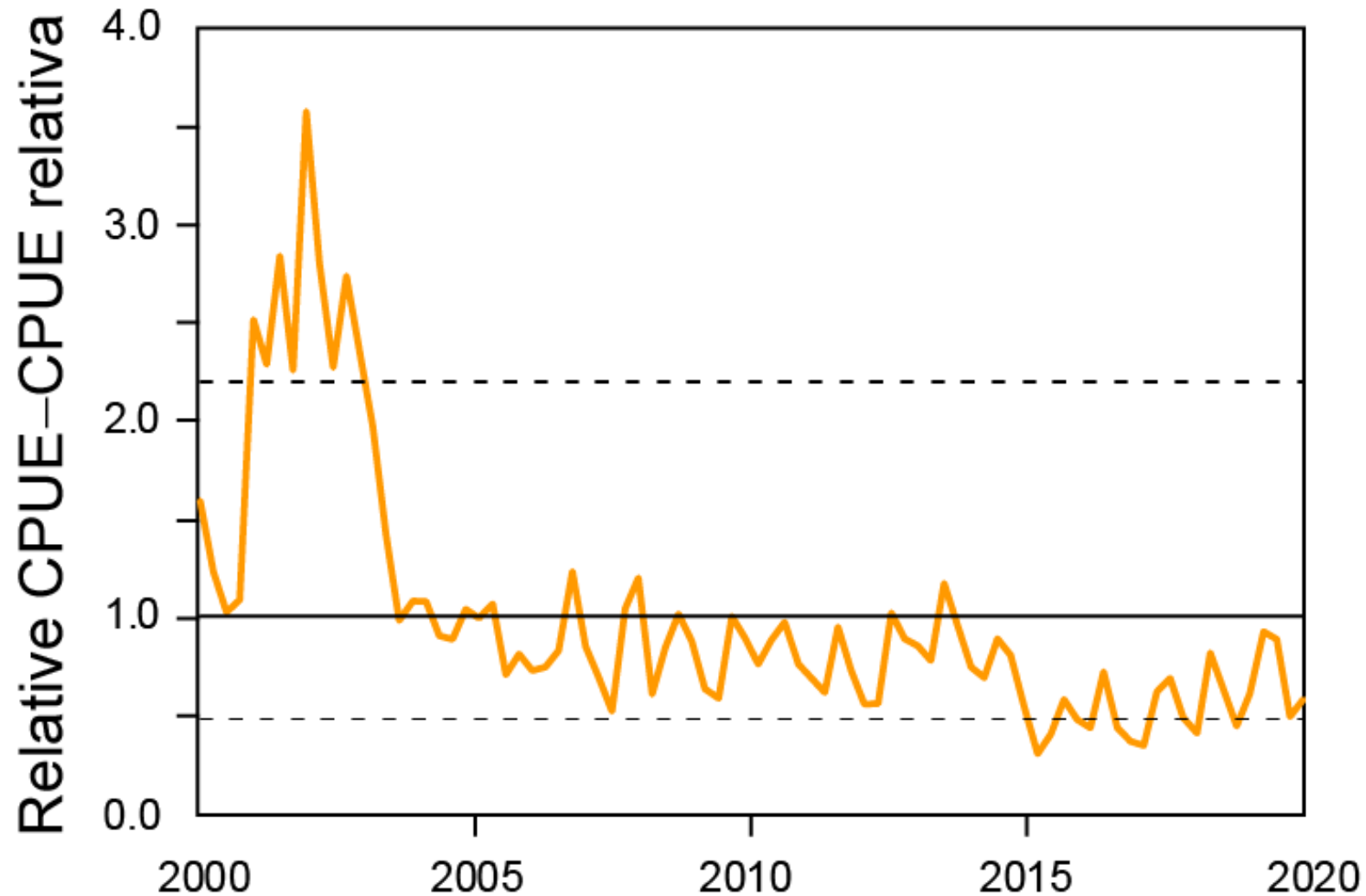
- A decline in the floating object catch per set for all three species
- Increase in catch per set for SKJ in the unassociated fishery

# Purse seine: Average length by species and set type



- A decline in the floating object average length for all three species
- A decline in average length for BET and SKJ in the other set types

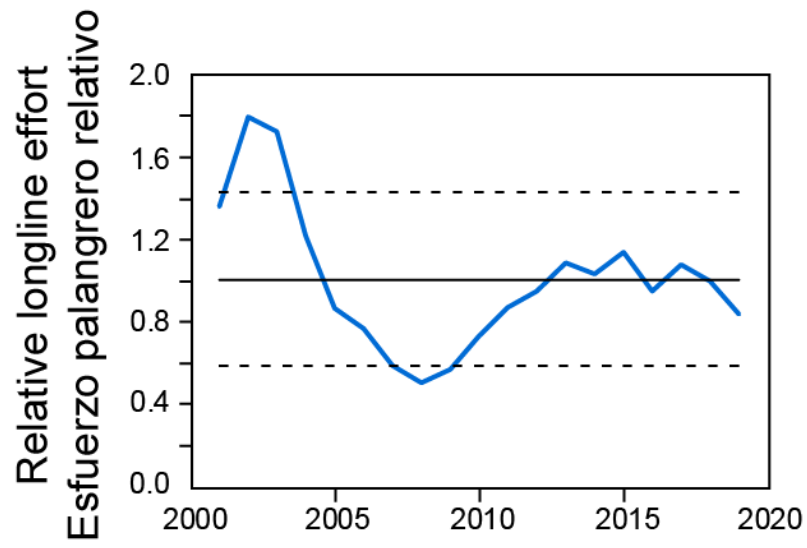
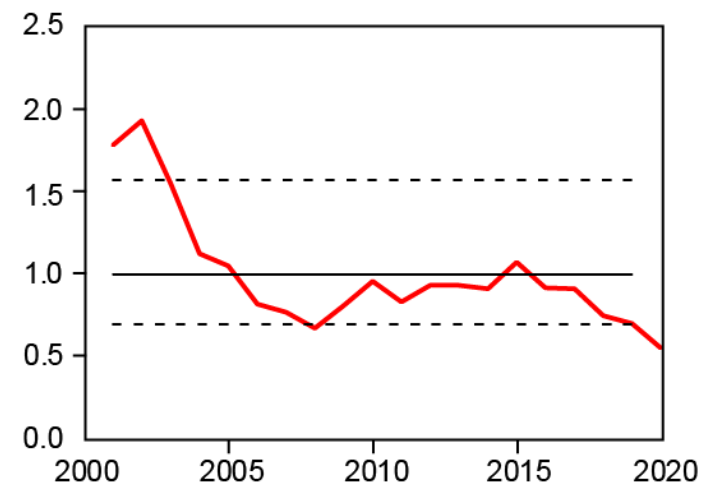
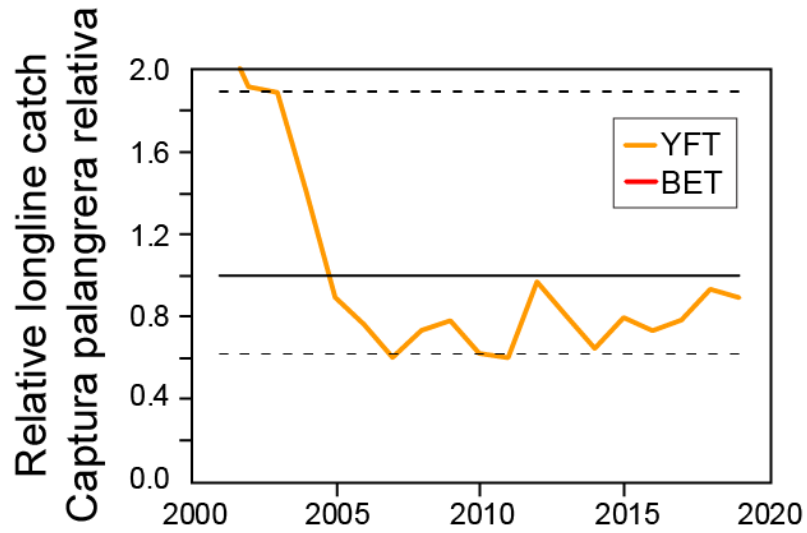
# Purse seine: Standardized YFT DEL CPUE



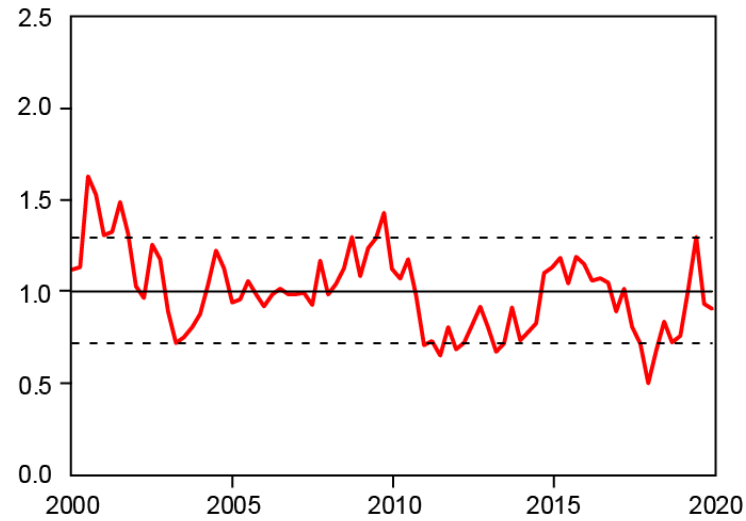
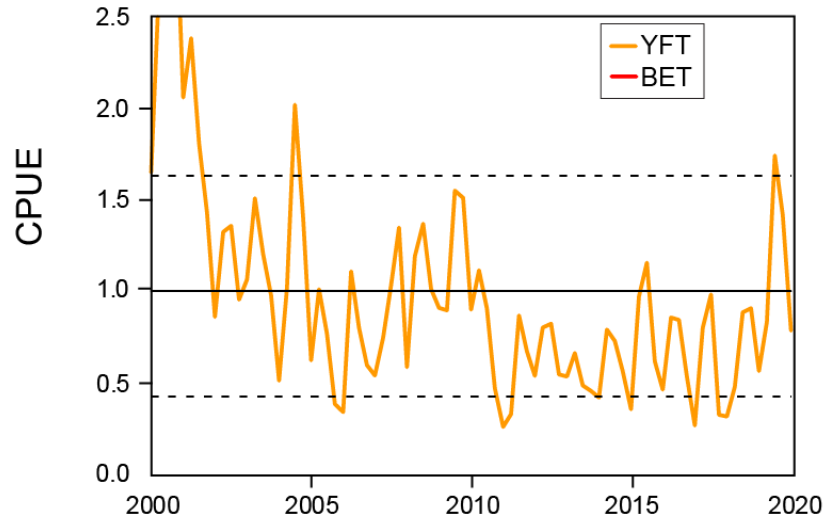
- A decline in standardized catch per day fished of YFT in the dolphin associated fishery



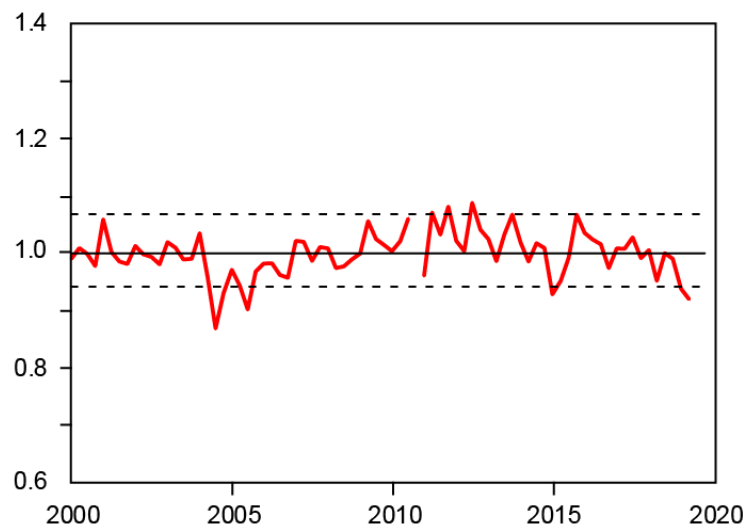
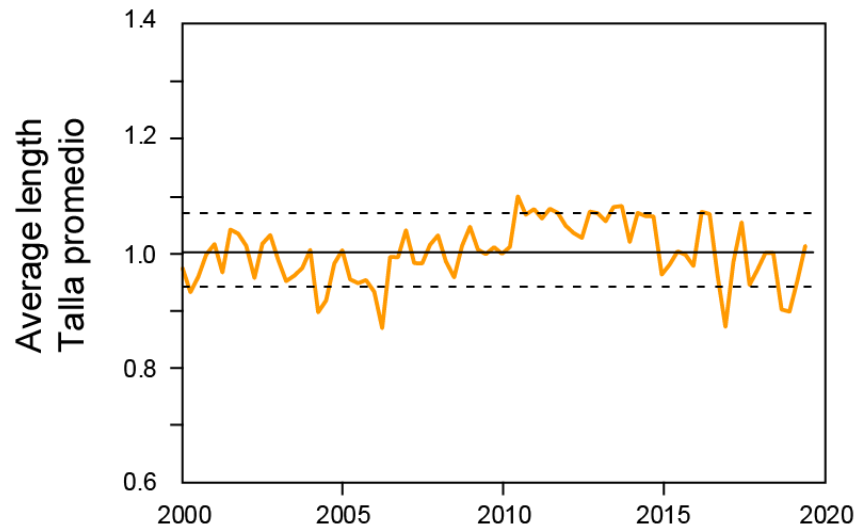
# Longline: Catch and effort



# Longline: Standardized CPUE and average length



- A decline in standardized YFT and BET CPUE
- A period of increased YFT and BET average length

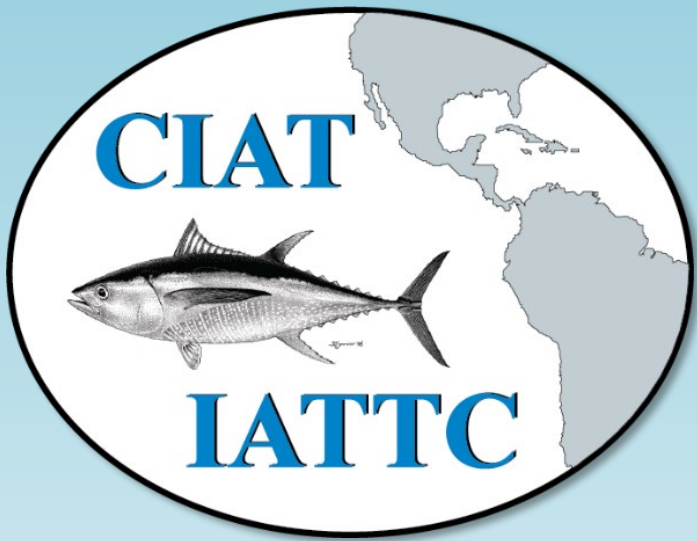


# Summary

2020 is an anomalous year due to the COVID pandemic and can't be used to interpret long term trends

Most SSIs based on the floating-object fishery suggest that the fishing mortality of all three species has increased

Probably due to the increase in the number of floating-object sets



Questions

# Purse seine: Catch in numbers by species and set type

