

Comisión Interamericana del Atún Tropical
Inter-American Tropical Tuna Commission



FAD fishery statistics

J. Lopez*, Martin Hall, E. Altamirano, Marlon Roman, Nick Vogel et al.

*jlopez@iattc.org

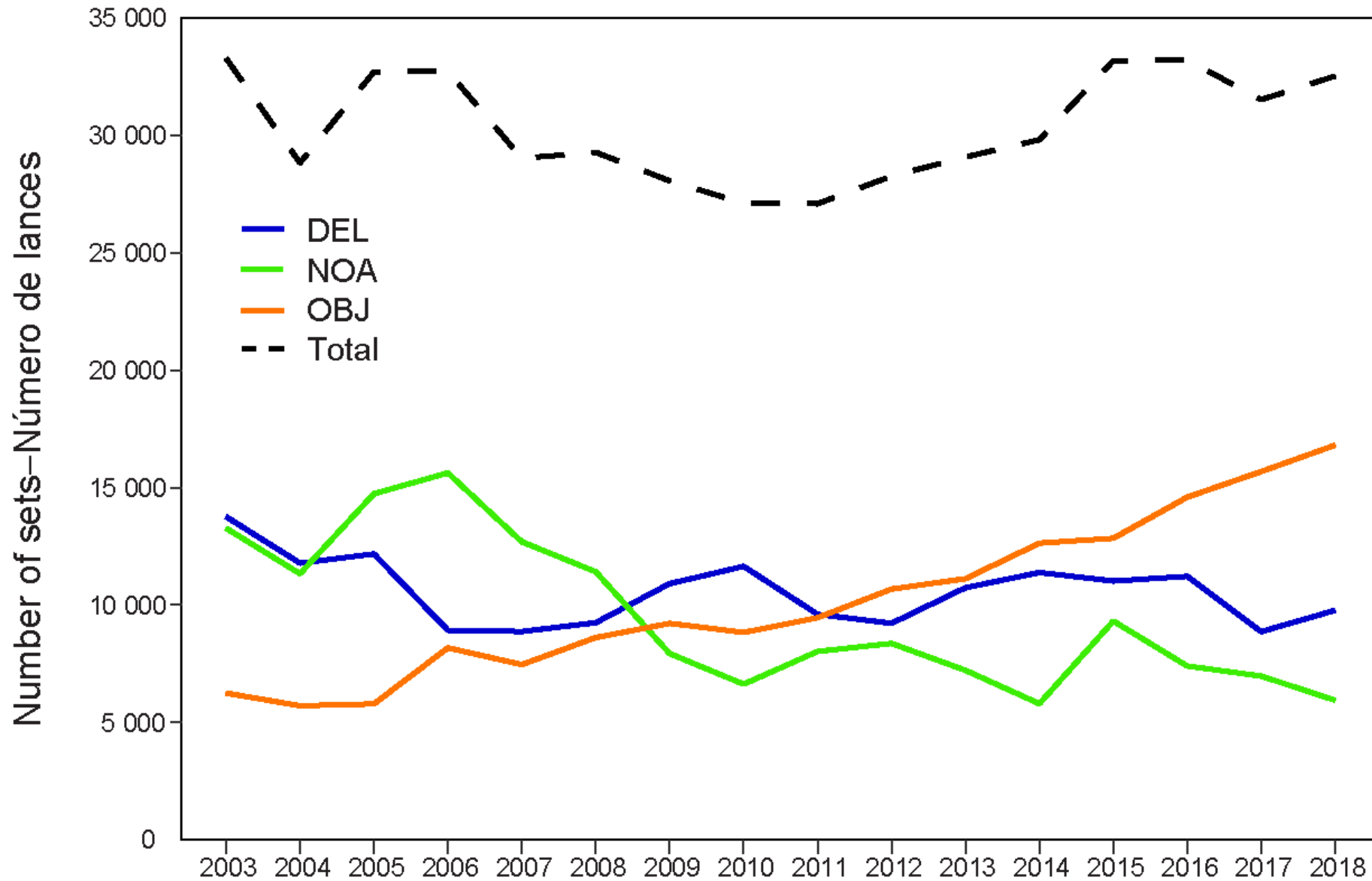
4rd Meeting of the Ad Hoc Working Group on FADs, Bilbao, EH, Spain, 19 July 2019

Outline - Plan

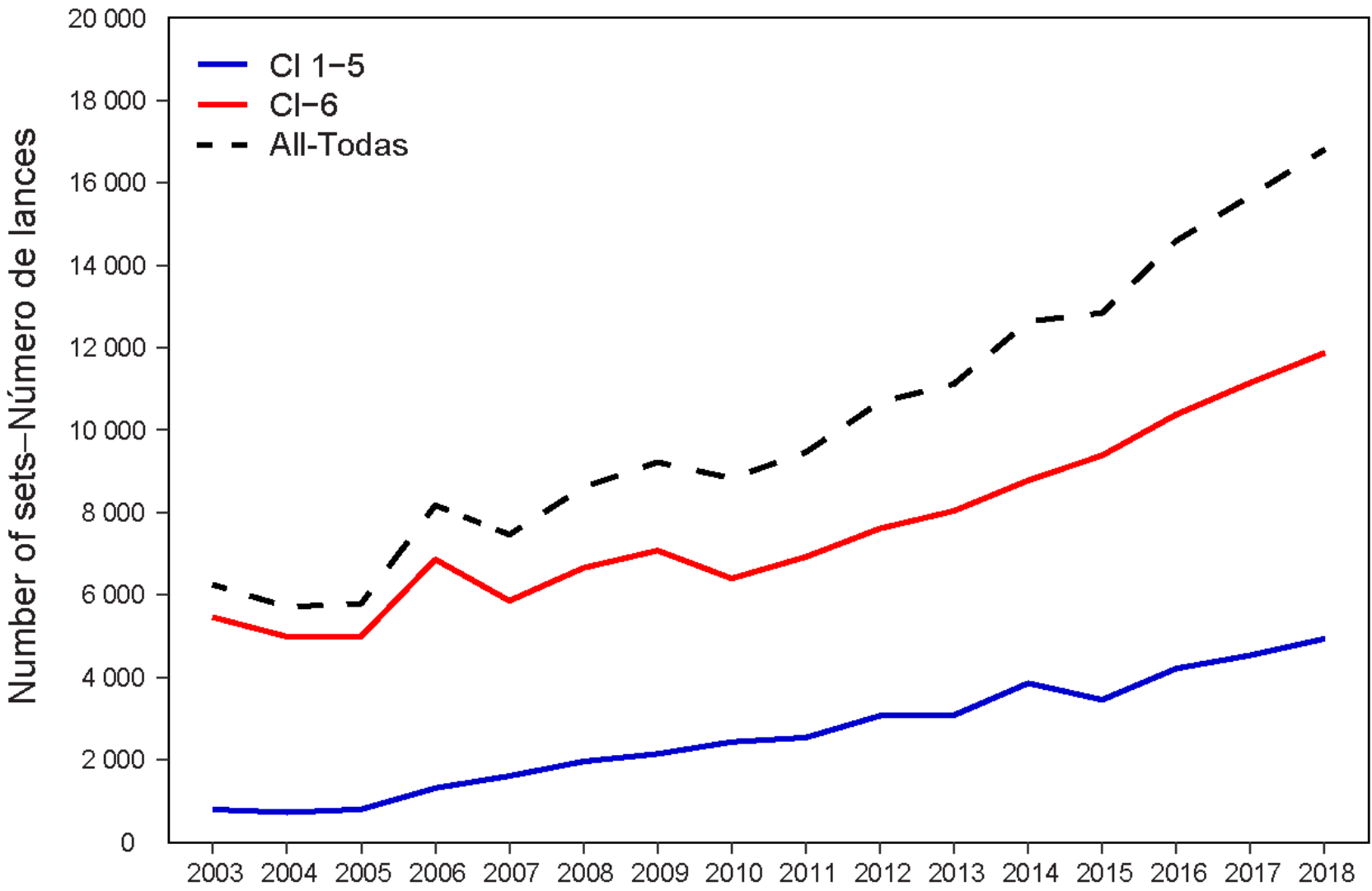
1. Datos de captura y esfuerzo – Catch and effort
2. Actividades sobre plantados – Activities on FADs
3. Resultados del analysis de las boyas activas –
Results of the analysis of active buoy data

Documents IATTC 94-01, FAD-04-01, SAC-10-05
for more information.

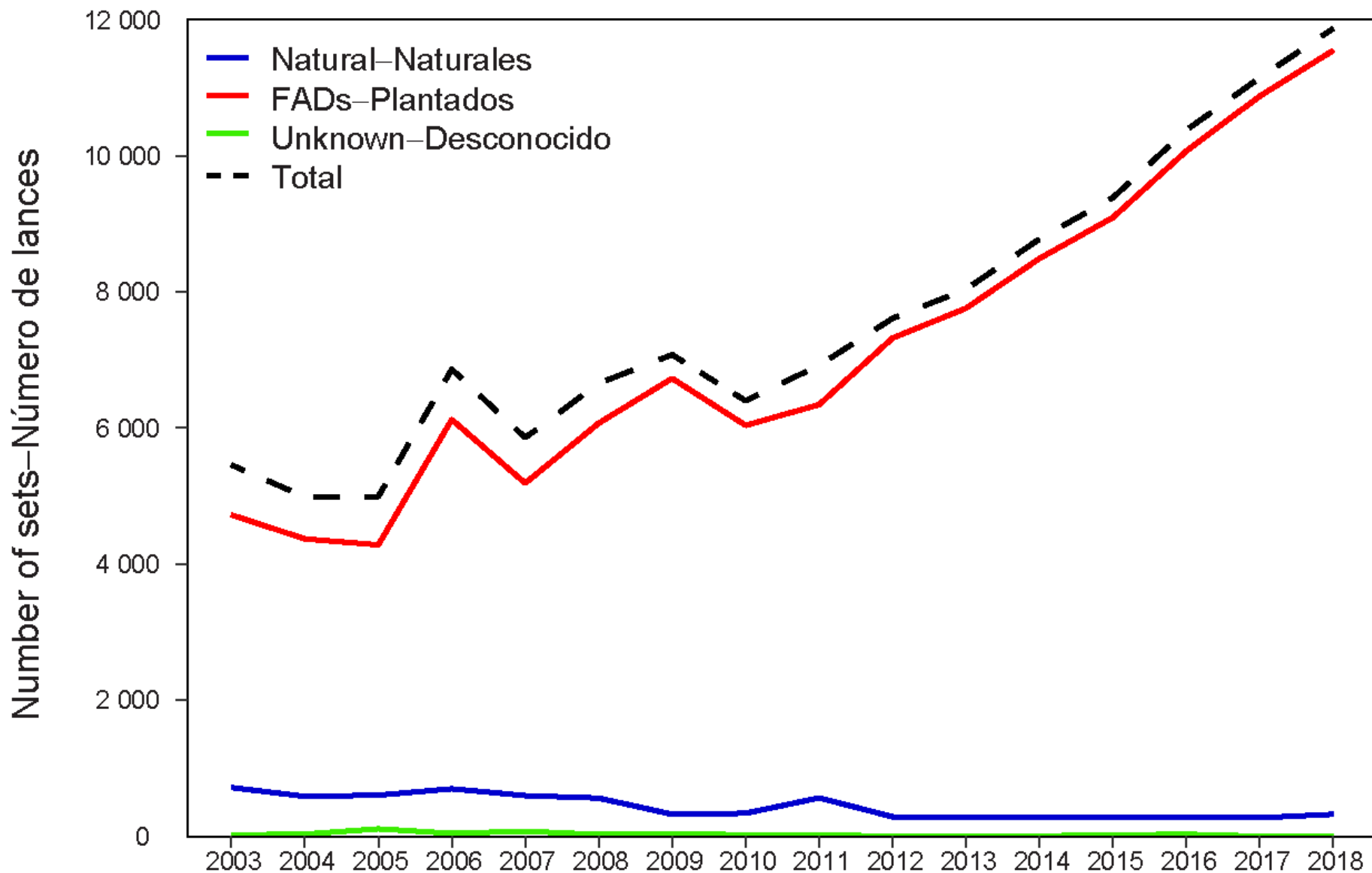
Total number of sets by set type – Numero total de lances por tipo de lance



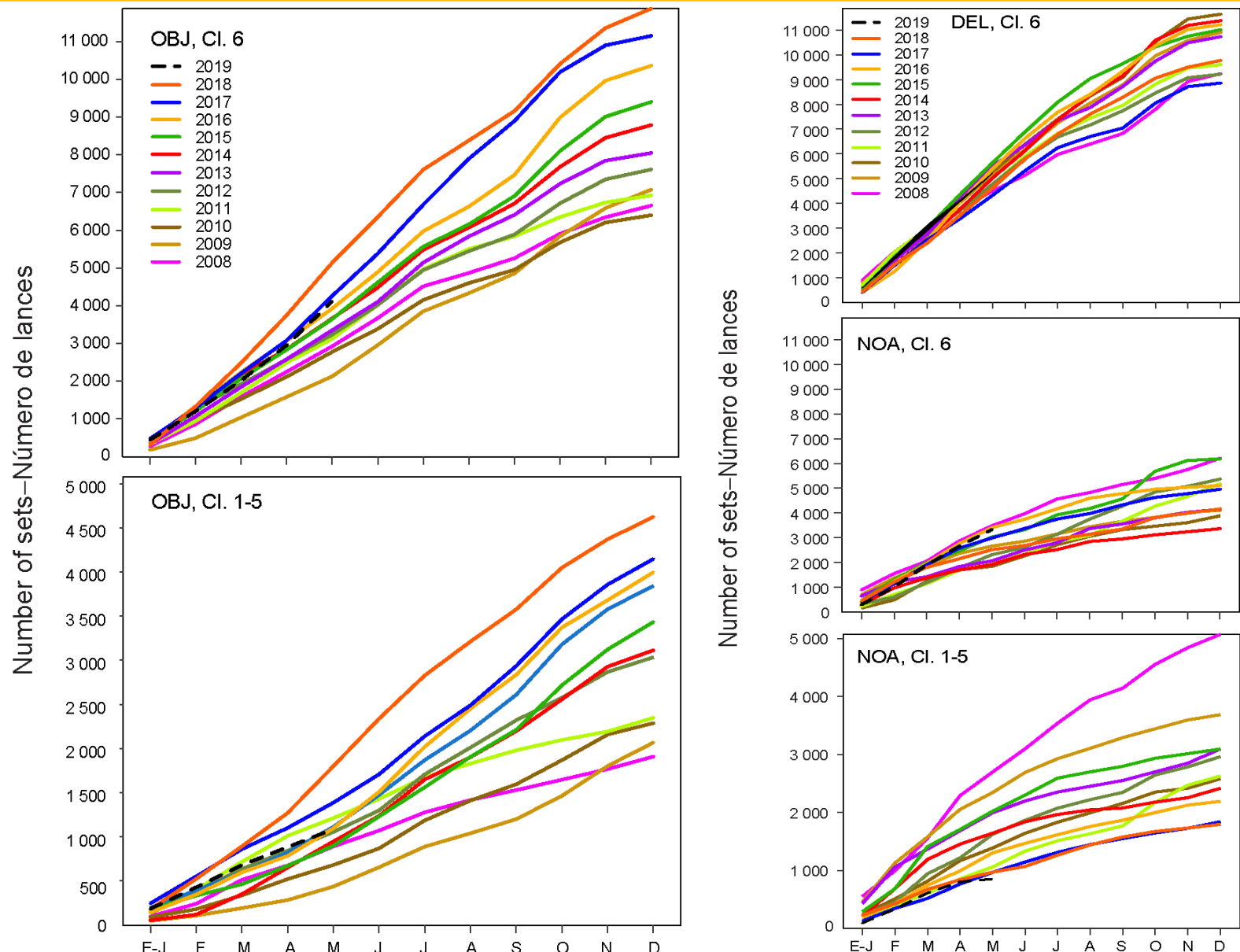
Number of sets on floating object by Class-size vessel – Numero de lances sobre OBJ por clase



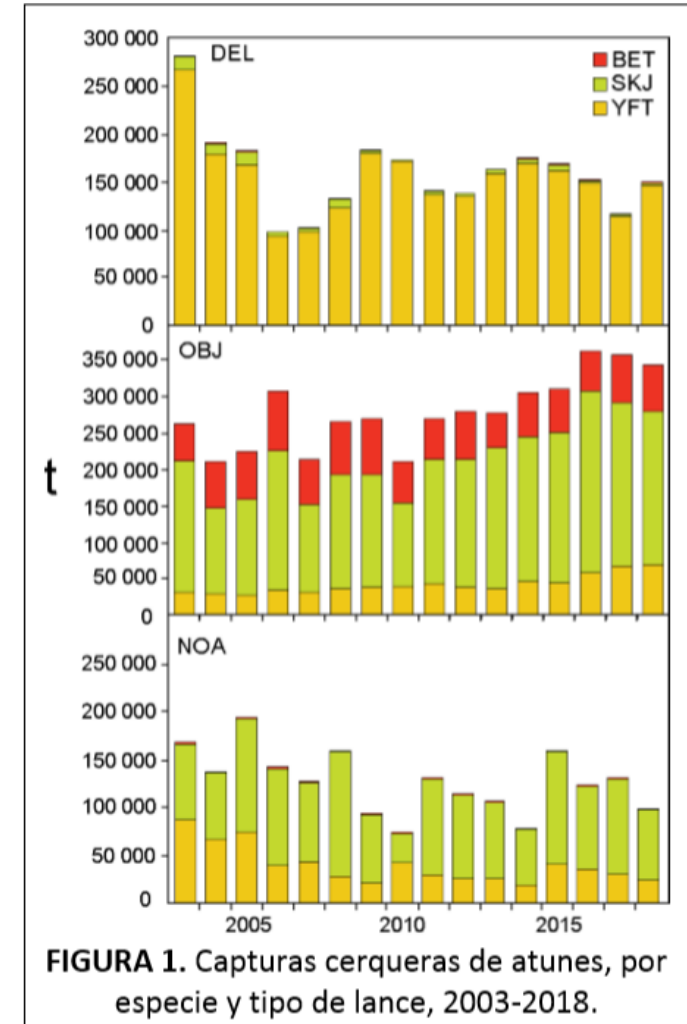
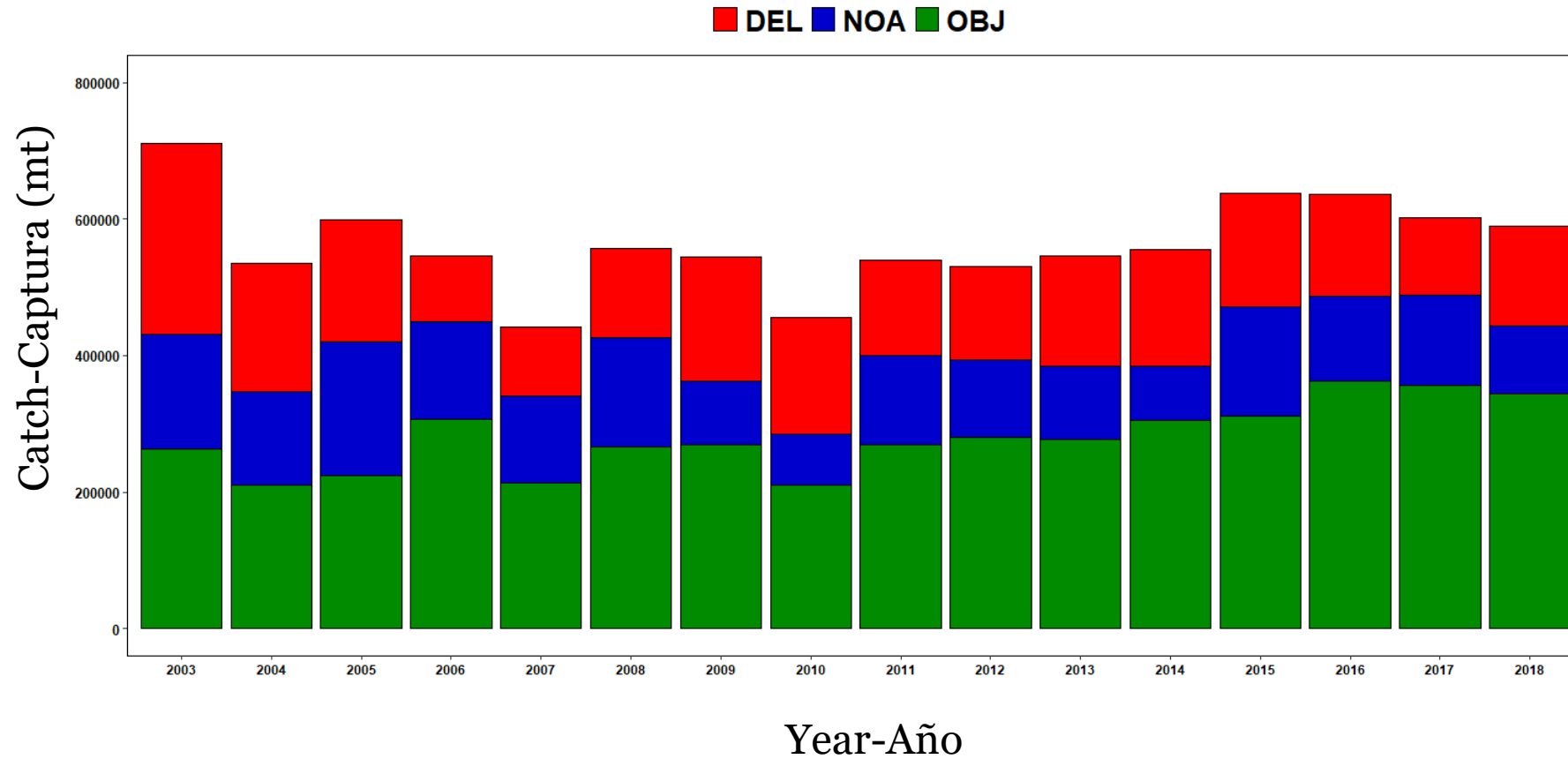
Sets by type of floating object made by Class-6 vessels – Lances sobre diferentes tipo de objeto para los buques de clase 6



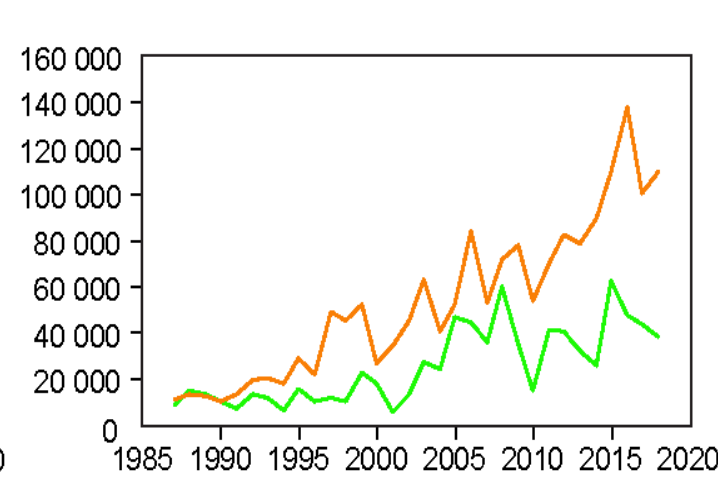
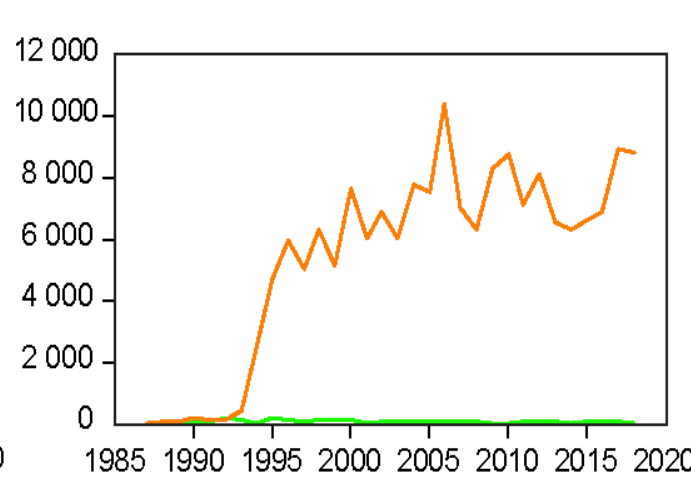
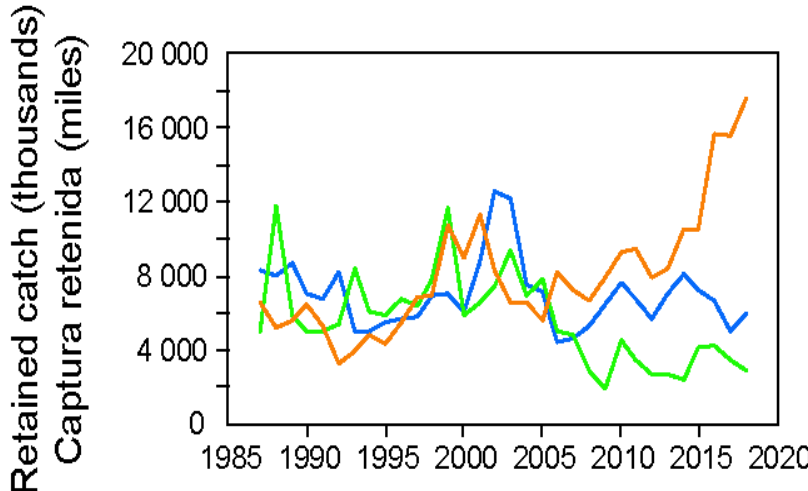
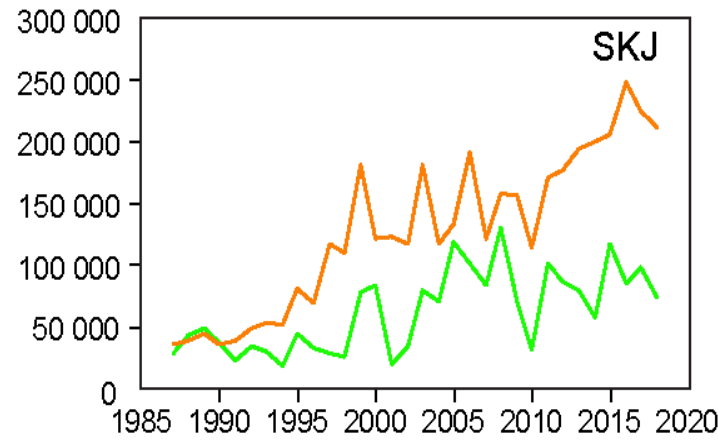
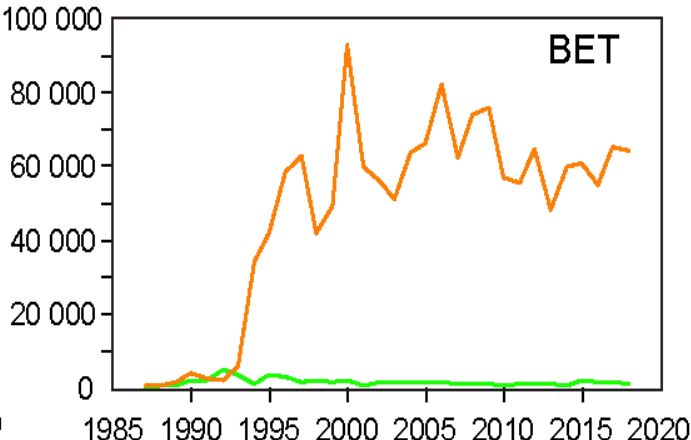
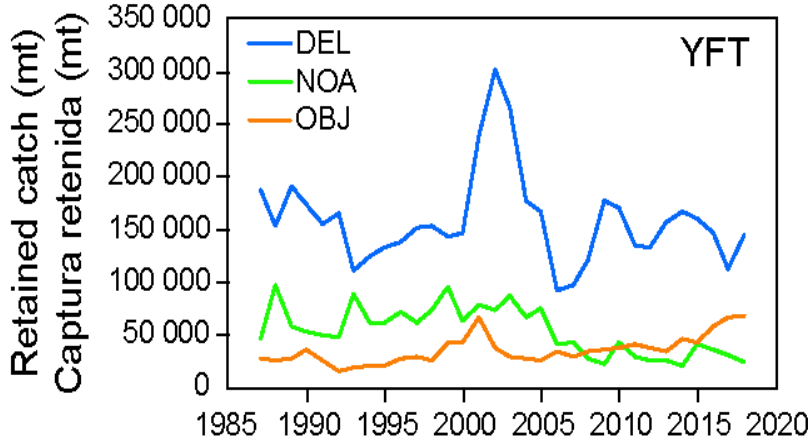
Cumulative sets by Class-size vessel and set type – Lances acumulados para las diferentes clases de buques y tipo de lance



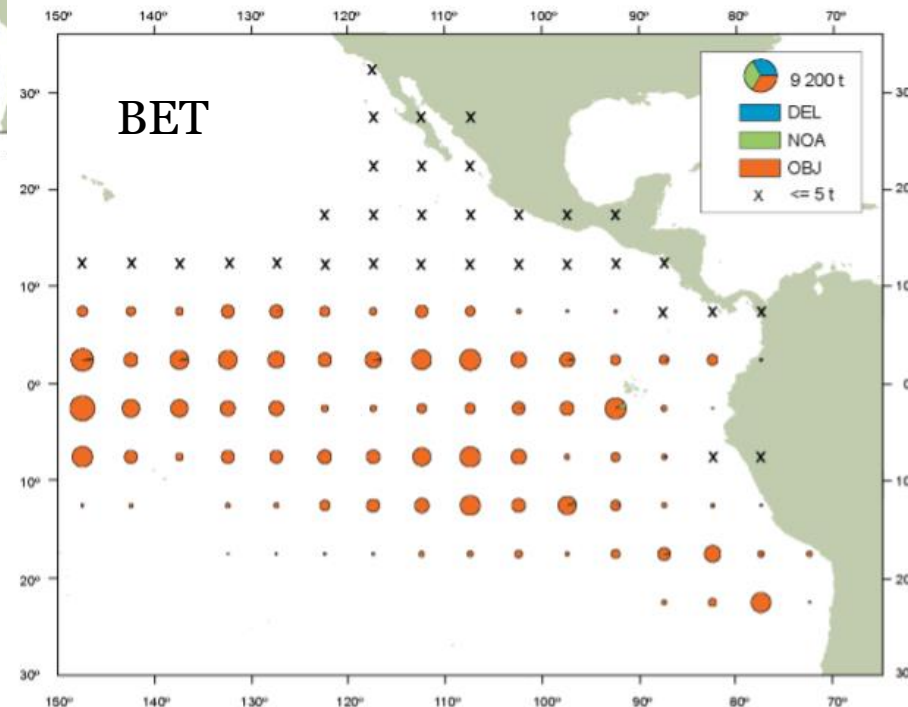
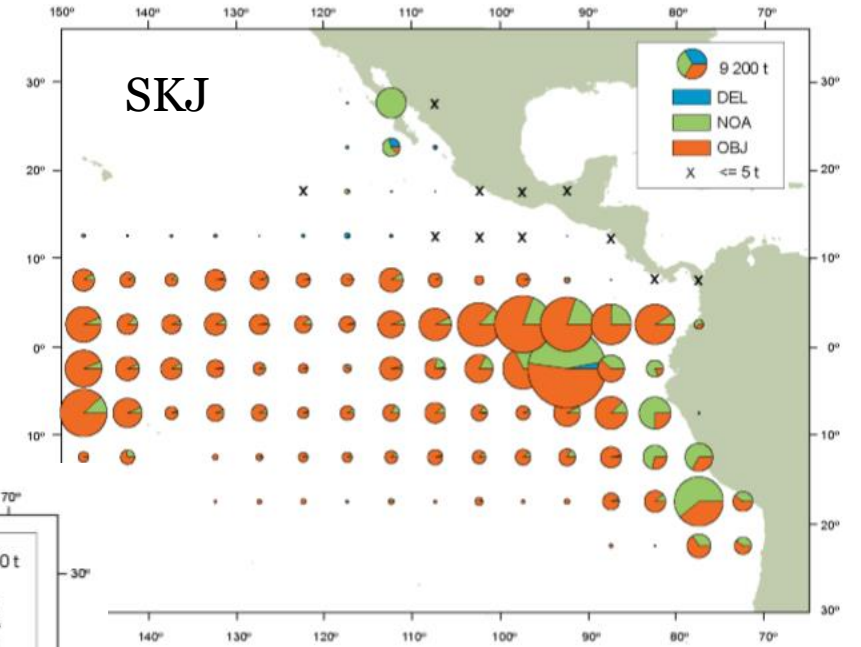
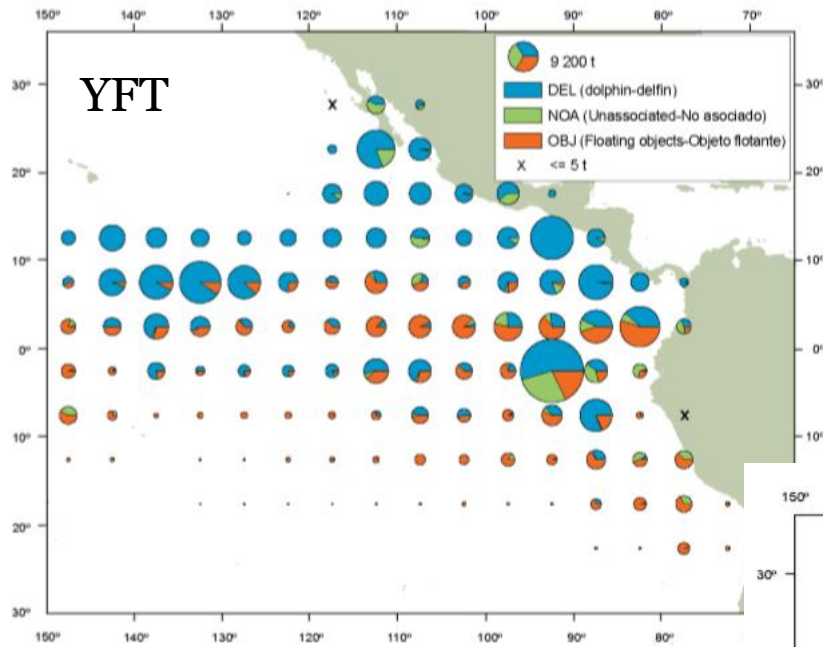
Catch by set type (and species) – Captura por tipo de lance (y especie)



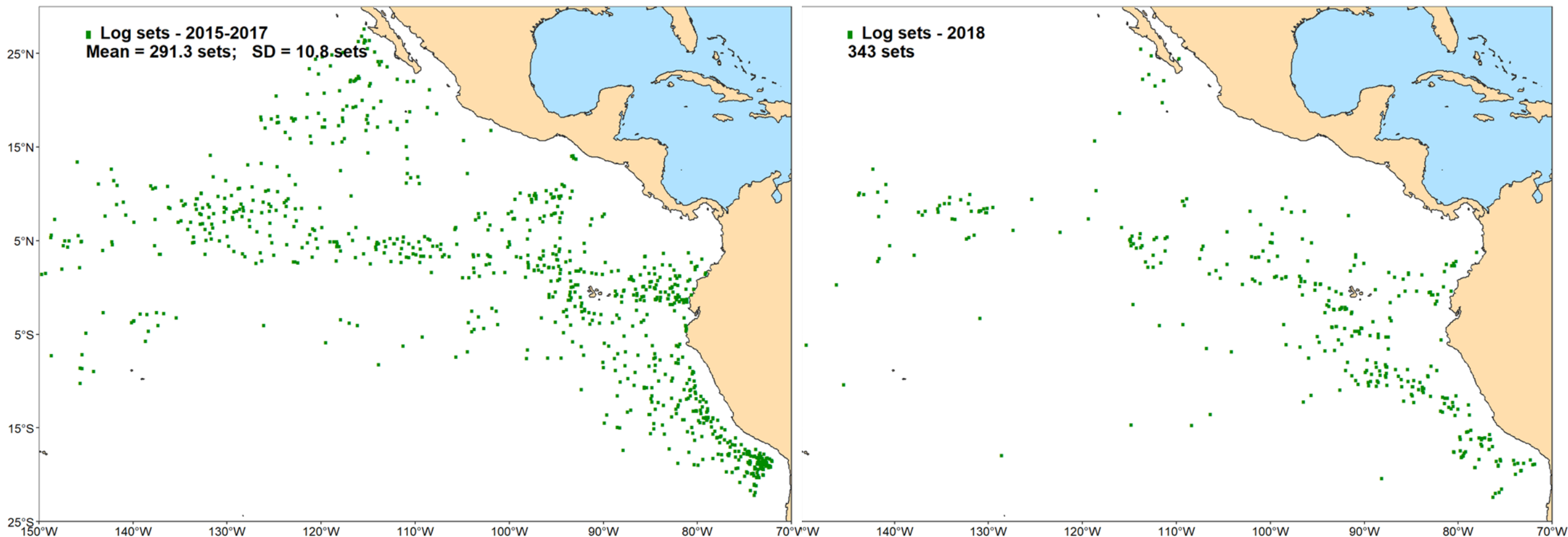
Catch of species (mt and individuals) by set type – Captura por especie (mt e individuos) y tipo de lance



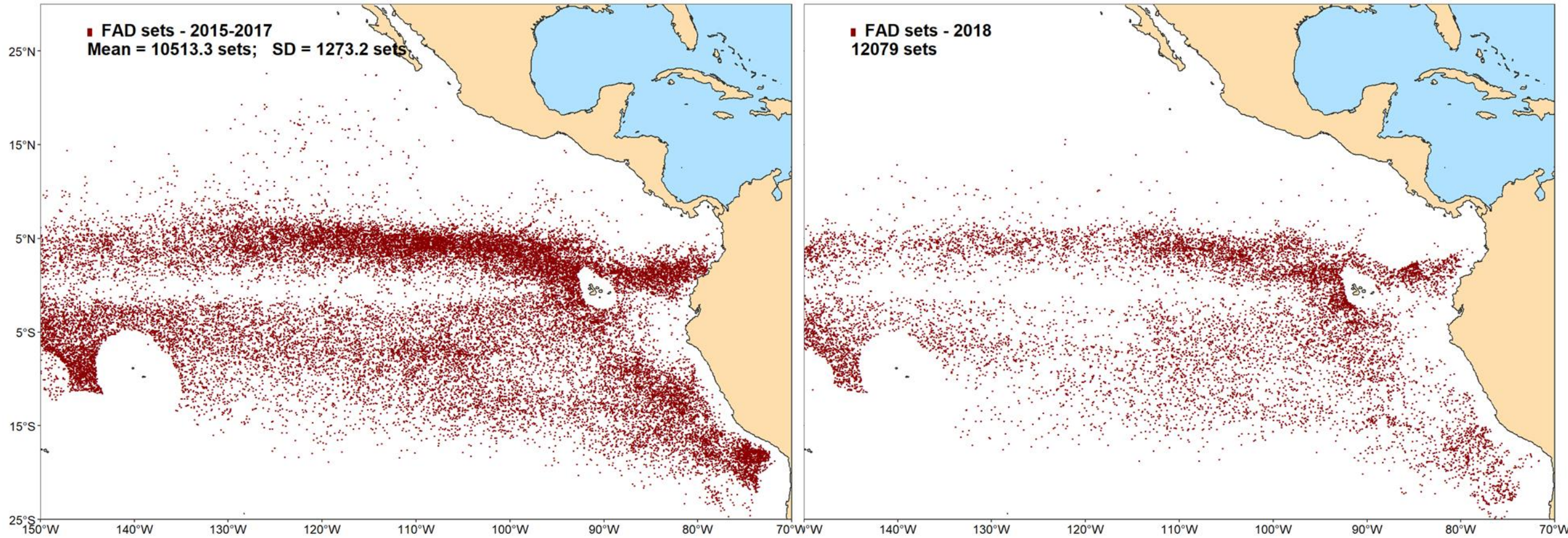
Spatial distribution of catches by species for 2018 – Distribucion especial de las capturas por especie en 2018



Spatial distribution of log sets – Distribucion espacial de lances sobre objetos naturales

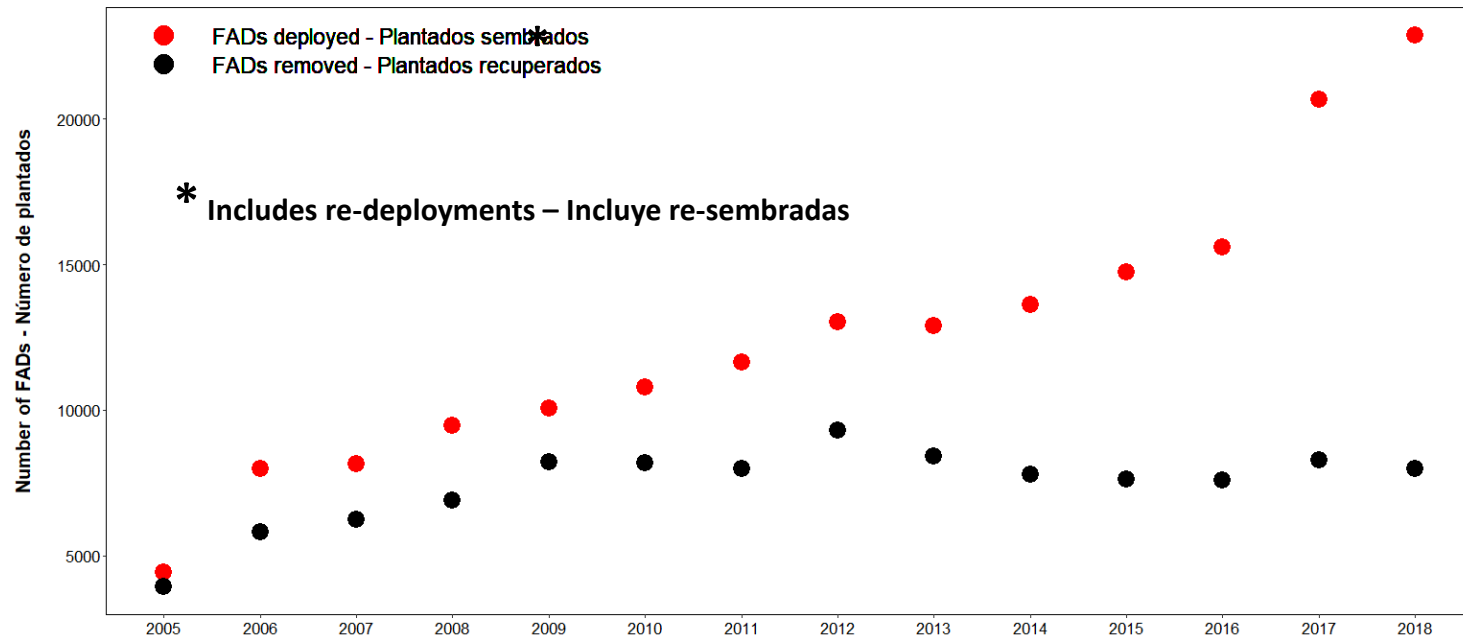


Spatial distribution of FAD sets – Distribucion espacial de lances sobre plantados



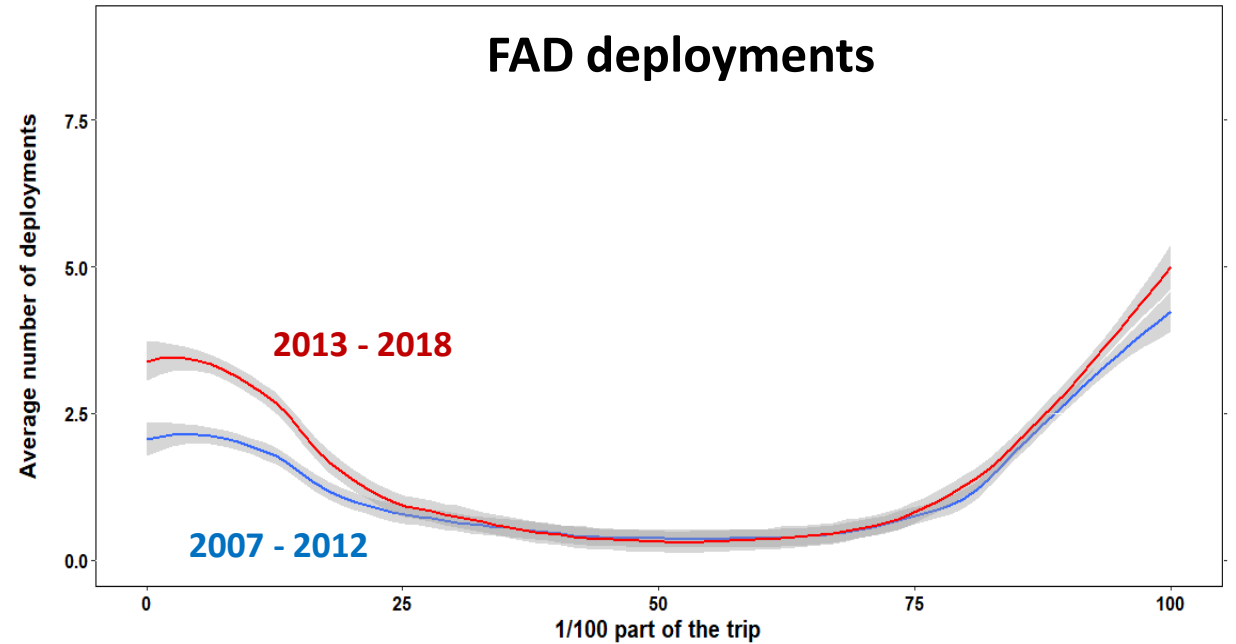
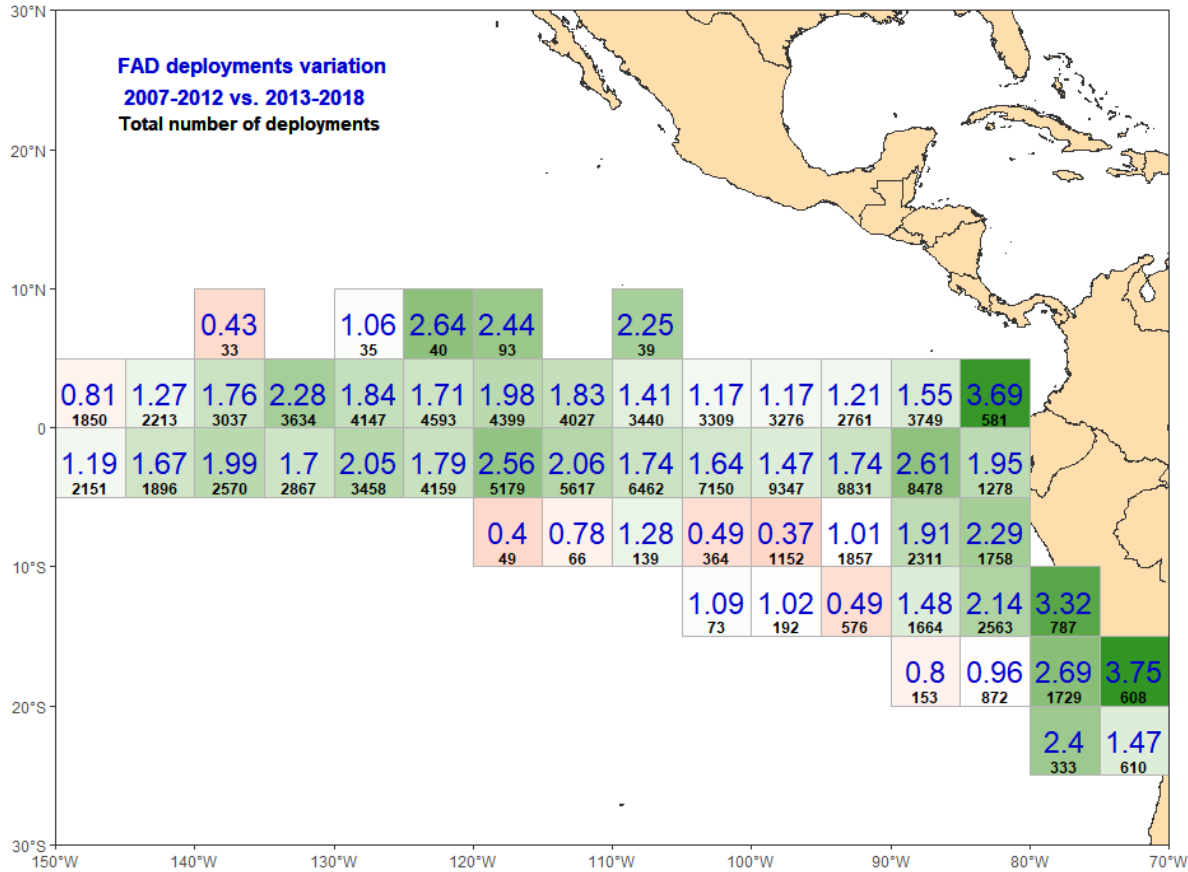
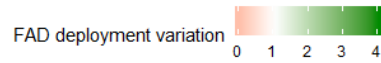
Number of deployments and retrievals 2005-2018 – Numero de siembras y recogidas 2005-2018

Number of FADs deployed vs number of FADs removed in the EPO. Class-6 vessels. Period 2005 - 2018



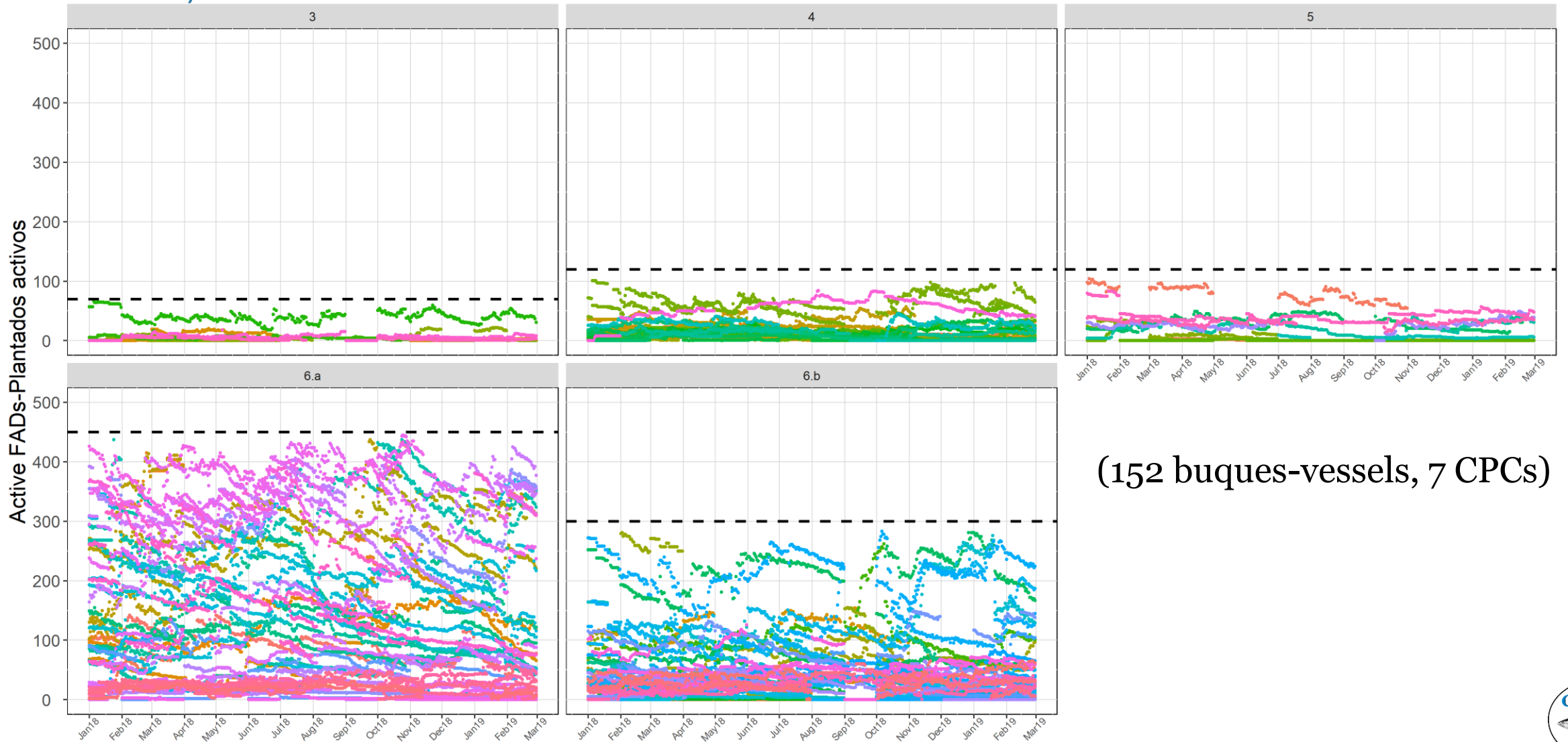
- Number of deployments keep increasing.
- **Unfunded proposal C-1-A** would provide a deeper understanding on FAD dynamics, including re-deployments.
 - **Priority** project by the WG last year

Deployment strategies – Estrategias de plantado



Daily active FADs – Plantados activos diarios

Res. C-17-02



(152 buques-vessels, 7 CPCs)

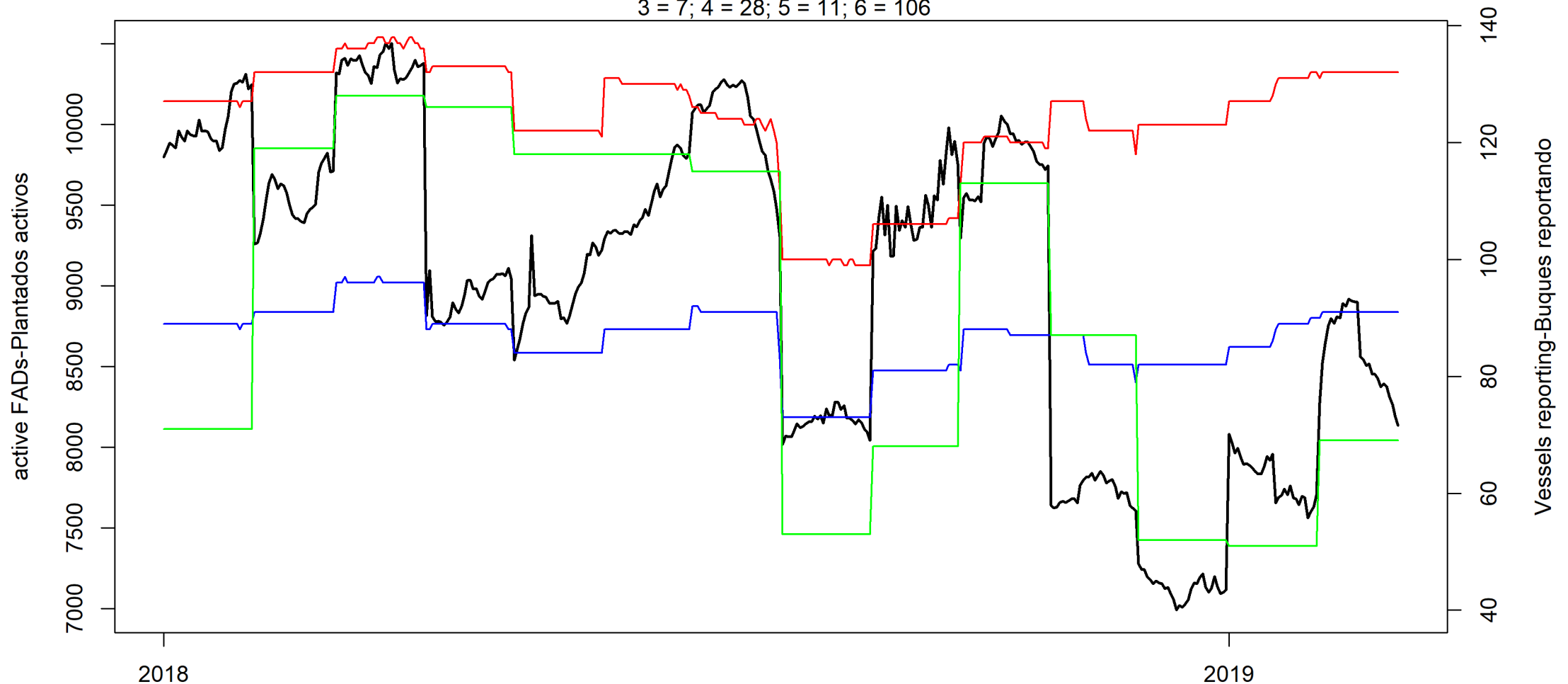
2018-2019

Análisis preliminar de actividades de plantados por clase

Res. C-17-02

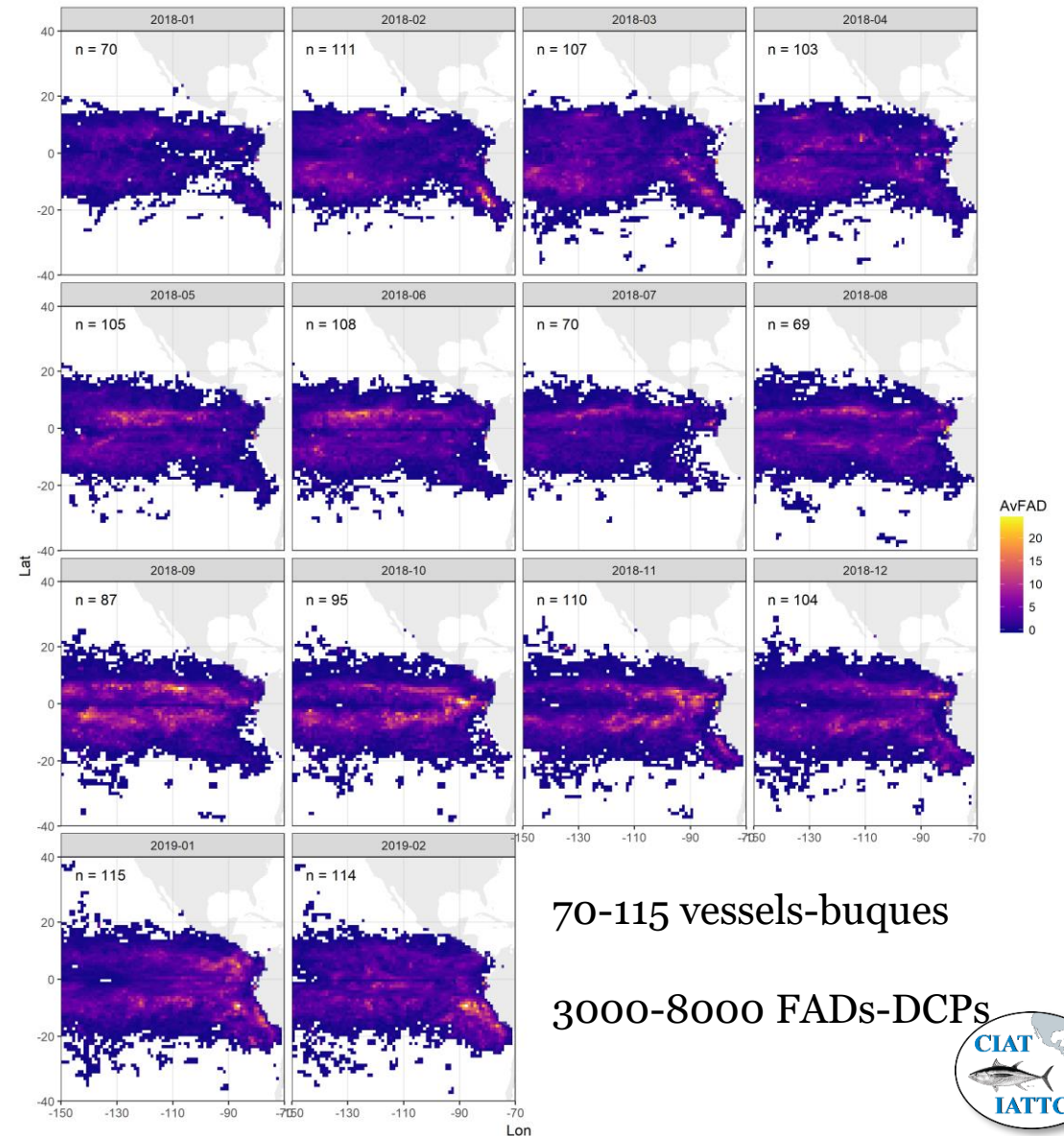
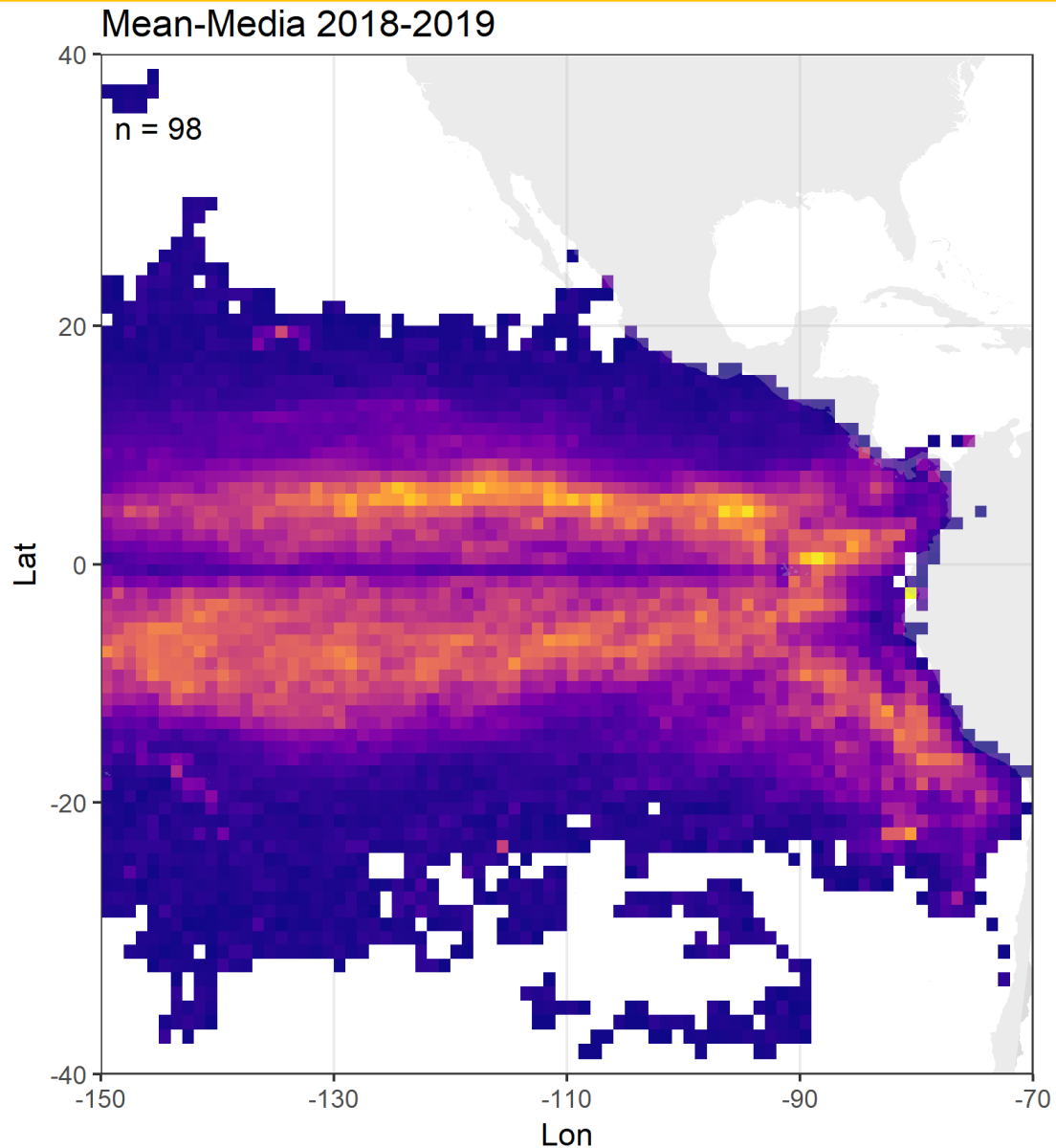
Plantados activos por día y clase (152 buques, 7 CPCs)

Vessels by class in the analysis-Buques por clase en el análisis
3 = 7; 4 = 28; 5 = 11; 6 = 106



2018-2019

Active FADs densities – Densidades de DCPs activos





Questions

