

INTERNATIONAL DOLPHIN CONSERVATION PROGRAM

**PERMANENT WORKING GROUP ON TUNA TRACKING**

**25<sup>TH</sup> MEETING**

PANAMA  
16 JUNE 2008

**DOCUMENT TT-25-04 (REVISED)**

**MATTERS RELATED TO THE TUNA TRACKING AND DOLPHIN SAFE  
CERTIFICATION PROGRAMS**

This report presents comparisons of dolphin safe certificates and their corresponding Tuna Tracking Forms (TTFs) for trips that started on or after 1 January 2007, and that ended on or before 25 April 2008, and a summary of the TTFs received by the Secretariat.

**1. SUMMARY OF DOLPHIN SAFE CERTIFICATION PROGRAM**

The [Procedures for AIDCP dolphin safe tuna certification](#) establish the following criteria for issuing dolphin safe certificates:

1. The certificate is signed by a competent national authority whose signature is recognized by the Secretariat.
2. The certificate references a valid TTF for dolphin safe tuna.
3. Tuna caught by vessels with DMLs is eligible for dolphin safe certification only if the fishing captain is on the List of Qualified Captains.
4. The competent national authority issuing the certificate has a tuna tracking system consistent with the AIDCP.

The Secretariat uses the following guidelines for queries about the authenticity of any dolphin safe certificate:

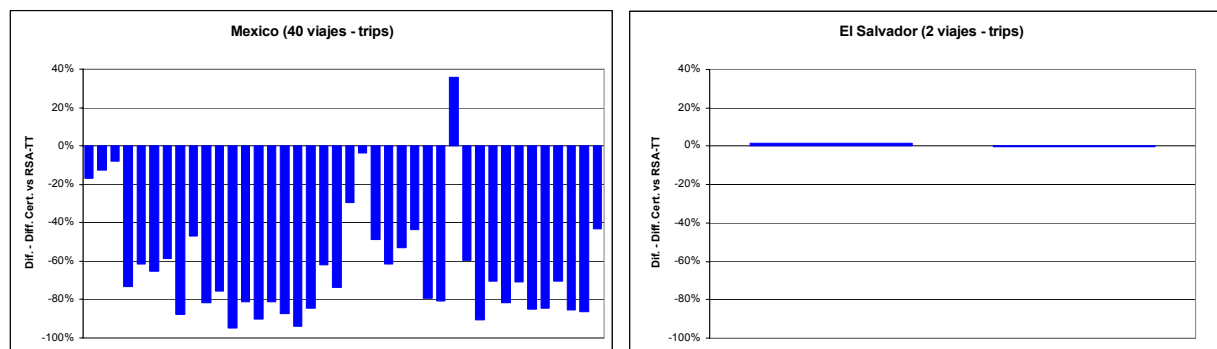
1. The Secretariat responds to questions about specific certificates from potential importing states or companies only.
2. If the certificate meets the four requirements above, the response is that the certificate is valid.
3. If the Secretariat does not have the information it needs to verify 1 or 2 above, it first asks the competent national authority to provide the information before replying.
4. Otherwise, the Secretariat replies that the certificate is not valid.
5. No other information is provided about the contents of the TTF.

No inquiries have been received to date regarding the validity of a dolphin safe certificate.

As of 11 June 2008, the Secretariat has received 13 valid dolphin-safe certificates issued on or after 1 January 2007. These certificates represent tuna from 42 trips and 42 TTFs. The Secretariat has received the originals of all 42 TTFs.

Questions may arise about the validity of a certificate if the data on the certificate do not match the data on the corresponding TTFs. For all these trips with valid dolphin safe certificates, the amount of tuna on the certificate did not exceed the amount of dolphin safe tuna recorded on the corresponding TTFs, with the exception of one trip, in which the difference between the amount on the certificate and the amount recorded by the observer on the TTF is 36%. At its meeting in June 2003, the Working Group agreed that 10% would be the level used by the Secretariat to request an investigation. The Secretariat recently requested information about this from the competent national authority

The graph below shows the comparison of estimated weights, as recorded by the observer on the TTF, and the recorded scale weight for each TTF referenced for the 13 dolphin safe certificates mentioned above.



## 2. COMPARISON OF WHOLE WEIGHT ON TTFs AND PROCESSED WEIGHT ON DOLPHIN SAFE CERTIFICATES

Since its 14<sup>th</sup> meeting, in October 2003, the Working Group has discussed the issue of processed weight versus whole weight, and asked the Secretariat to compare the weights of processed tuna recorded on dolphin safe certificates with the weights of whole fish on the corresponding TTFs. For this analysis, the Secretariat asked the Parties in several occasions to provide information about the various conversion factors used by their industries in processing tuna. Different questionnaires have been developed to accommodate the requests of confidentiality of the data, as industries have indicated that some of the information is proprietary. The Secretariat has not received any new information additional to that described in Document TT-23-04, presented at the 23<sup>rd</sup> meeting of the Working Group in June 2007.

## 3. TTFs RECEIVED BY THE SECRETARIAT

Original TTFs received by the Secretariat, in accordance with paragraph 3.6 of the [System for Tracking and Verifying Tuna](#), by responsible national authority:

National authority		Trips <sup>1</sup>		% of originals received			
		Trips	TTFs received	This report	Oct 2007	Jun 2007	Oct 2006
Colombia	COL	89	86	96	89	89	44
Costa Rica	CRI	38	38	100	100	95	100
Ecuador	ECU	444	444	100	92	96	97
European Union	EUR	1	1	100	-	-	-
Guatemala	GTM	15	14	93	100	76	91
México	MEX	245	245	100	100	99	98
Nicaragua	NIC	6	0	0	0	0	0
Panamá	PAN	7	5	71	50	67	100
Perú	PER	4	3	75	100	75	100
El Salvador	SLV	51	42	82	70	98	94
United States	USA	3	3	100	100	-	-
Venezuela	VEN	34	34	100	89	87	96
<b>Total</b>		<b>937</b>	<b>915</b>	<b>98</b>	<b>93</b>	<b>95</b>	<b>94</b>

<sup>1</sup> Trips starting during 2007 and ending on or before 25 April 2008