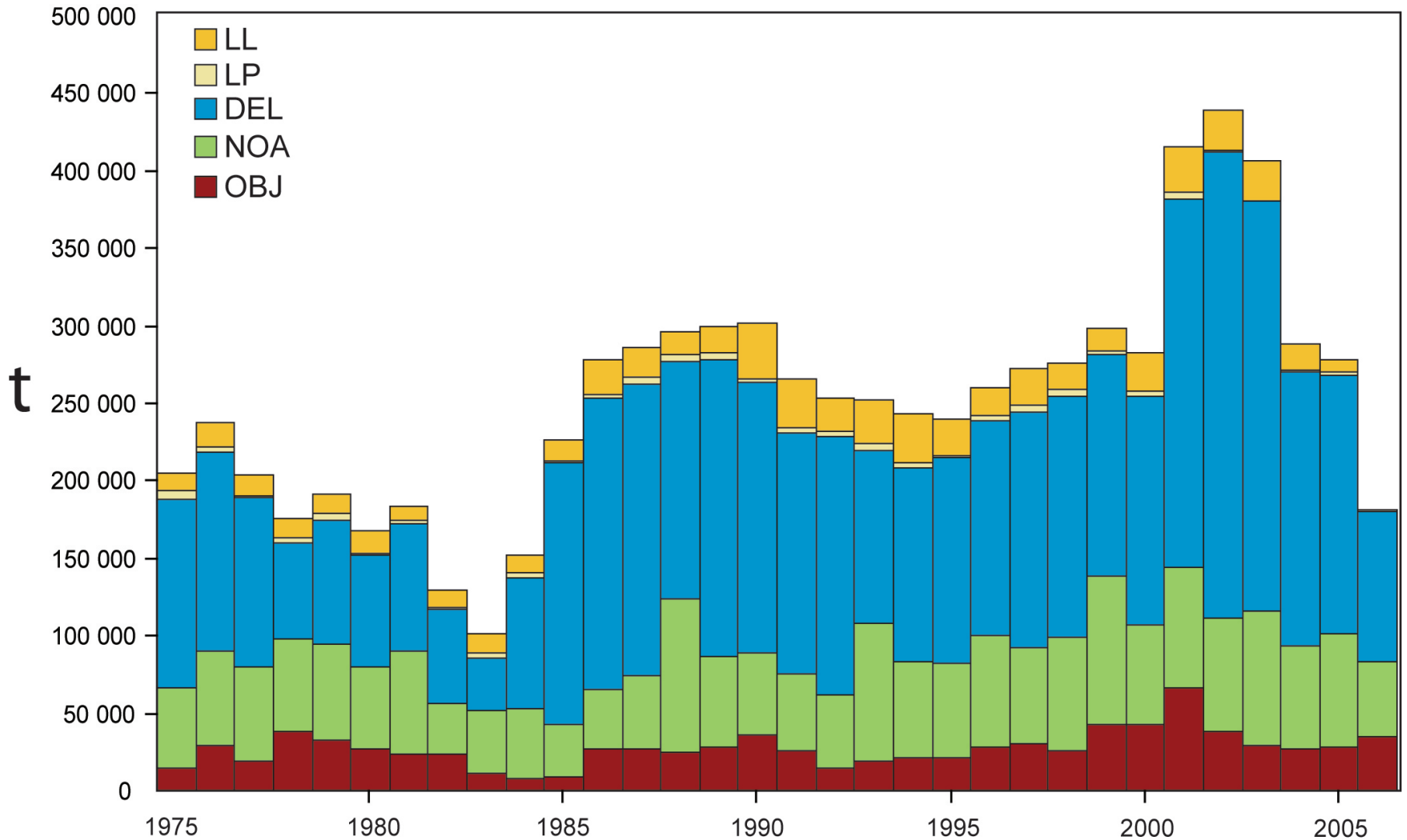


YFT

Captura por arte – Catch by gear type



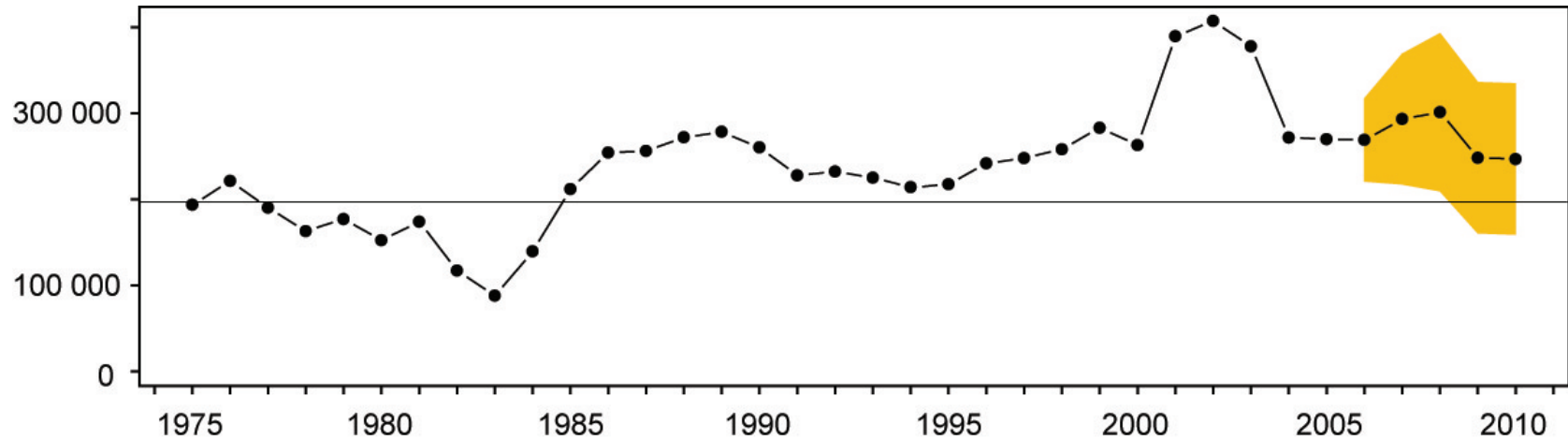
Possible reasons for decline in 2006

Posibles causas de la disminución en 2006

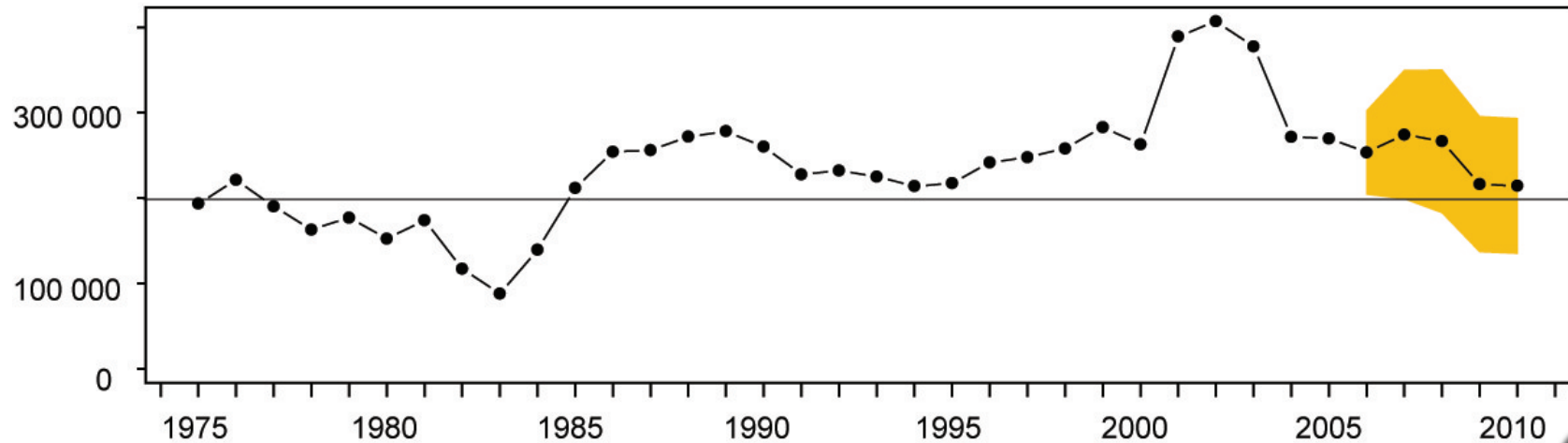
- Catchability
- Low average weight
- Lower recruitment
- Overfishing
- Capturabilidad
- Peso medio bajo
- Reclutamiento bajo
- Pesca excesiva

YFT

Captura cerquera predicha–Predicted purse-seine catches



t



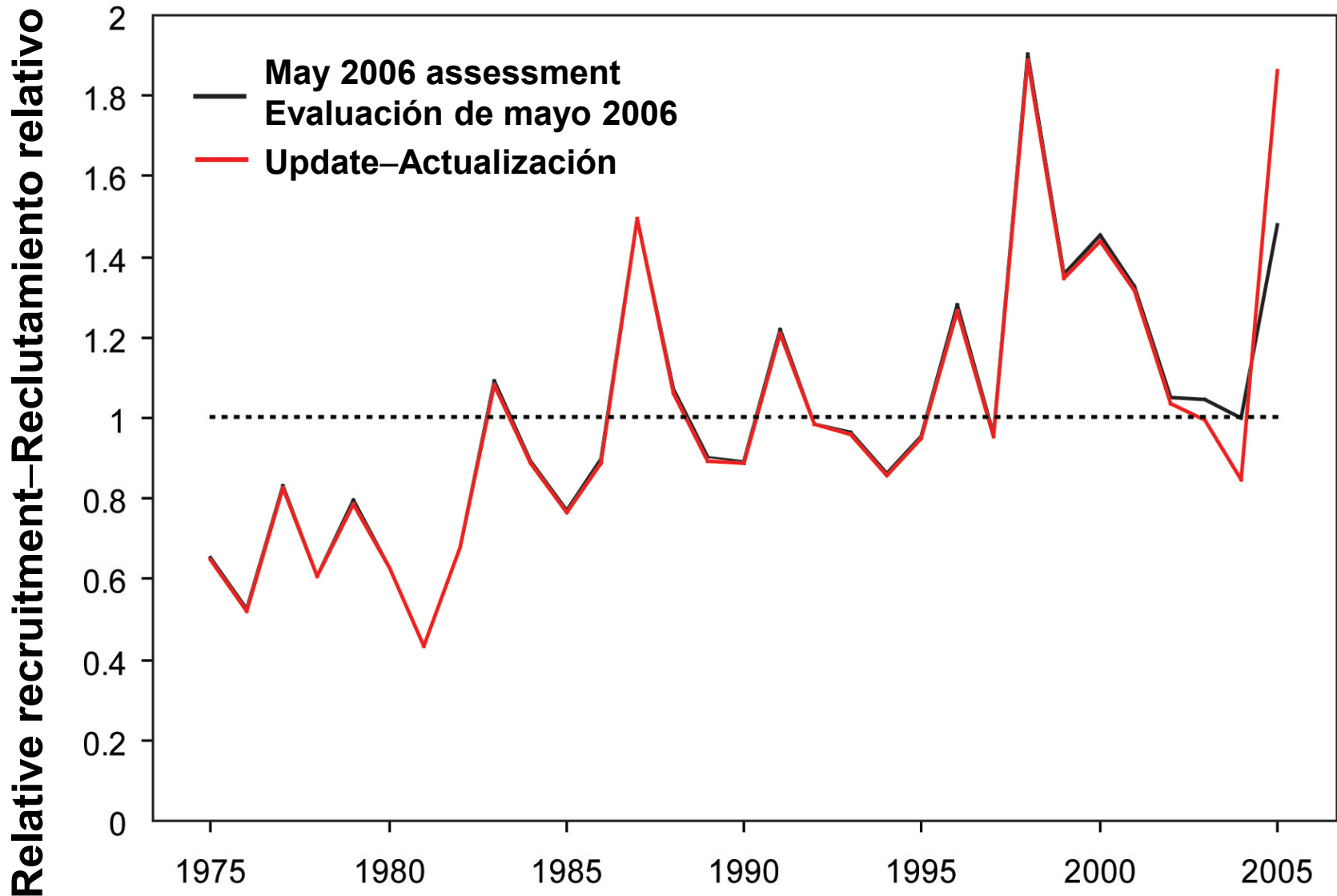
First-semester catches, 2001-2006, by set type

Capturas de primer semestre, 2001-2006, por tipo de lance

Year- Año	Floating objects Objetos flotantes		Unassociated No asociados		Dolphin, inshore Delfín, costero		Dolphin, offshore Delfín, alta mar	
	Catch- Captura (t)	Average weight- Peso medio (kg)	Catch- Captura (t)	Average weight- Peso Medio (kg)	Catch- Captura (t)	Average weight- Peso medio (kg)	Catch- Captura (t)	Average weight- Peso medio (kg)
2001	47,332	9.3	58,037	12.4	45,252	17.8	71,392	30.4
2002	20,835	4.9	39,182	15.4	64,231	23.3	92,290	31.1
2003	15,184	5.2	52,357	8.5	65,619	13.2	86,193	29.3
2004	11,263	5.6	50,978	9.1	47,398	13.4	60,572	30.6
2005	11,880	4.2	50,925	5.9	45,772	14.6	63,574	20.3
2006	12,832	2.9	43,001	5.4	30,597	13.0	21,932	22.1

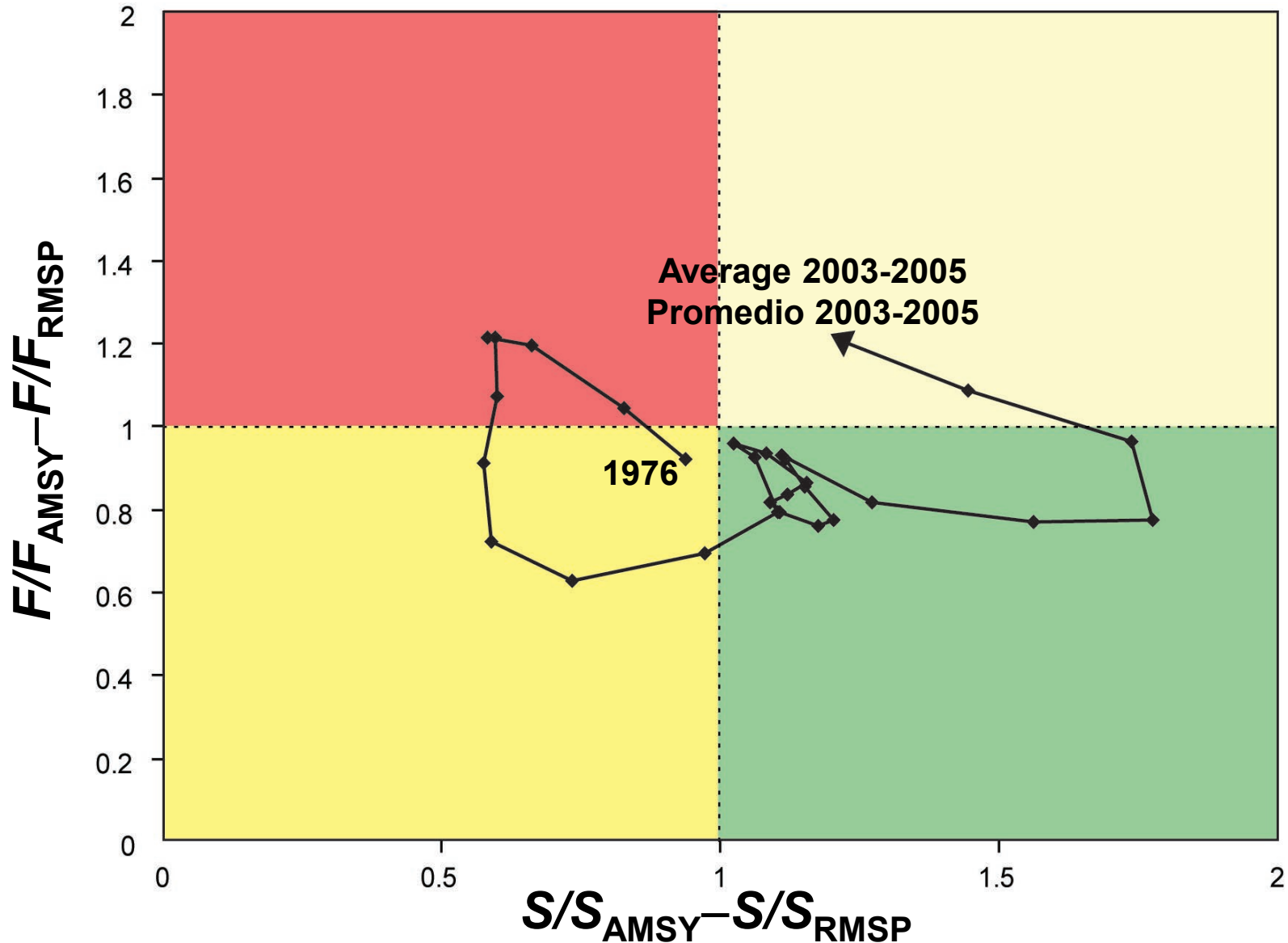
Comparison of recent estimates of recruitment

Comparación de estimaciones recientes del reclutamiento

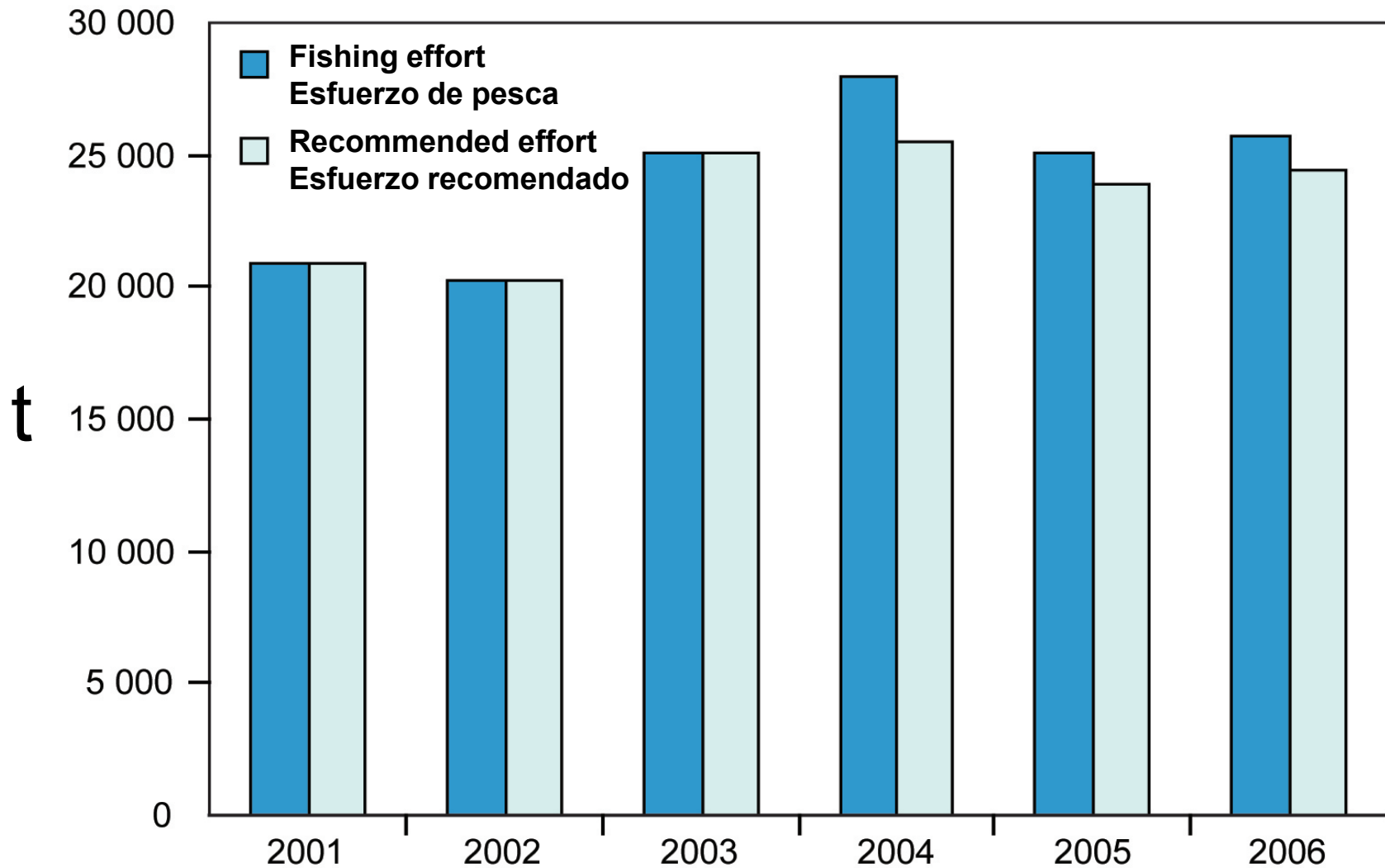


Trajectory of spawning stock size and fishing mortality

Trayectoria del tamaño de la población reproductora y la mortalidad por pesca



Fishing effort–Esfuerzo de pesca



Years ending 30th June–Fin de año 30 de junio