

Comisión Interamericana del Atún Tropical Inter-American Tropical Tuna Commission



Recently available dFAD tracking data in the WCPO: challenges, new research areas and potential useful tool to guide management

Lauriane Escalle¹, Maurice Brownjohn², Stephen Brouwer¹ and Graham Pilling¹

2^a Reunión del Grupo de Trabajo conjunto de las OROP atuneras sobre plantados

2nd Meeting of the Joint Tuna RFMOs Working Group on FADs

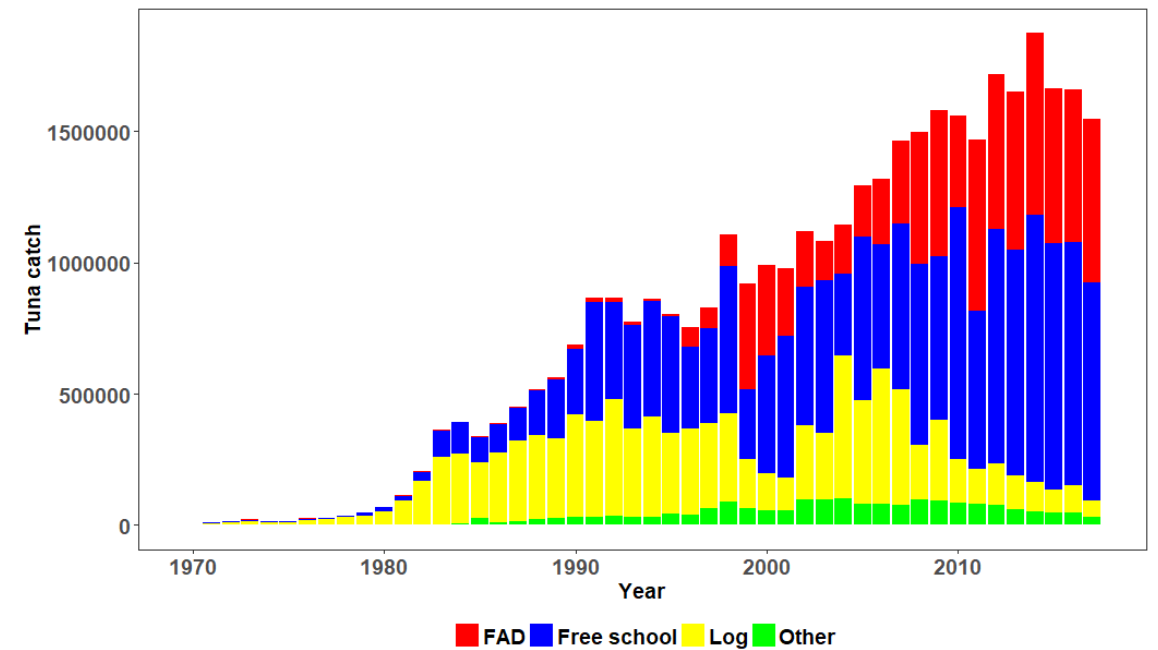
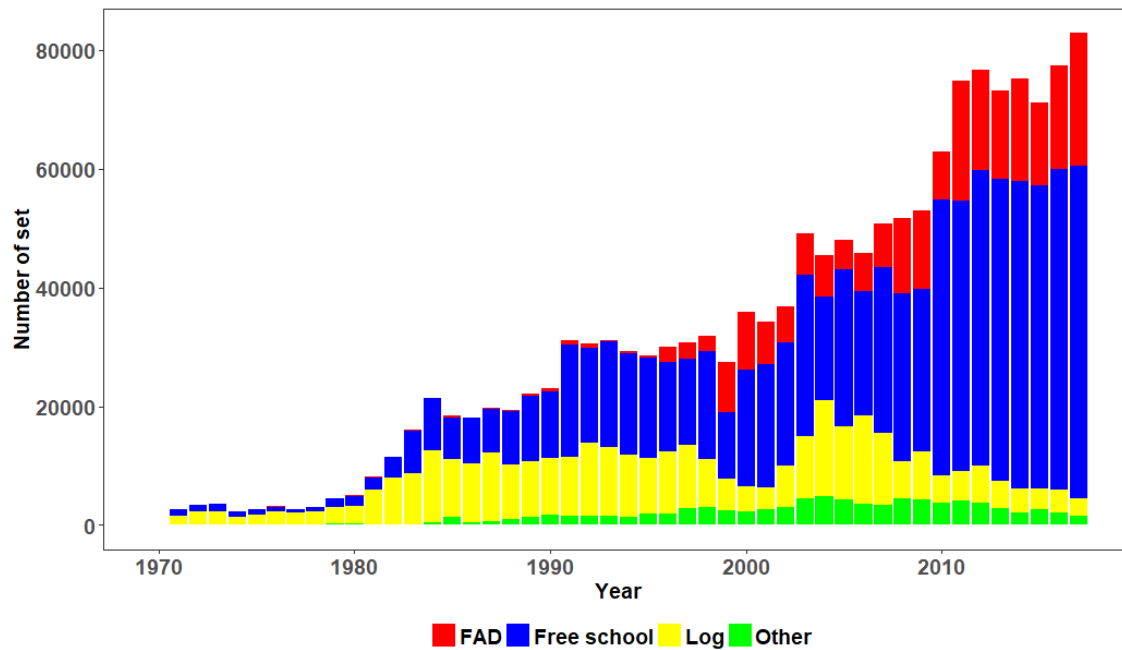
San Diego, California USA, 08-10 May 2019

¹Pacific Community (SPC)

²Parties to the Nauru Agreement (PNA)

Overview

- Increase use of drifting Fish Aggregating Devices (dFAD)
- High capture of bigeye tuna on FAD associated sets → 3 to 4 months FAD closure
- Potential ecosystem impacts



Co-funded by
European Union



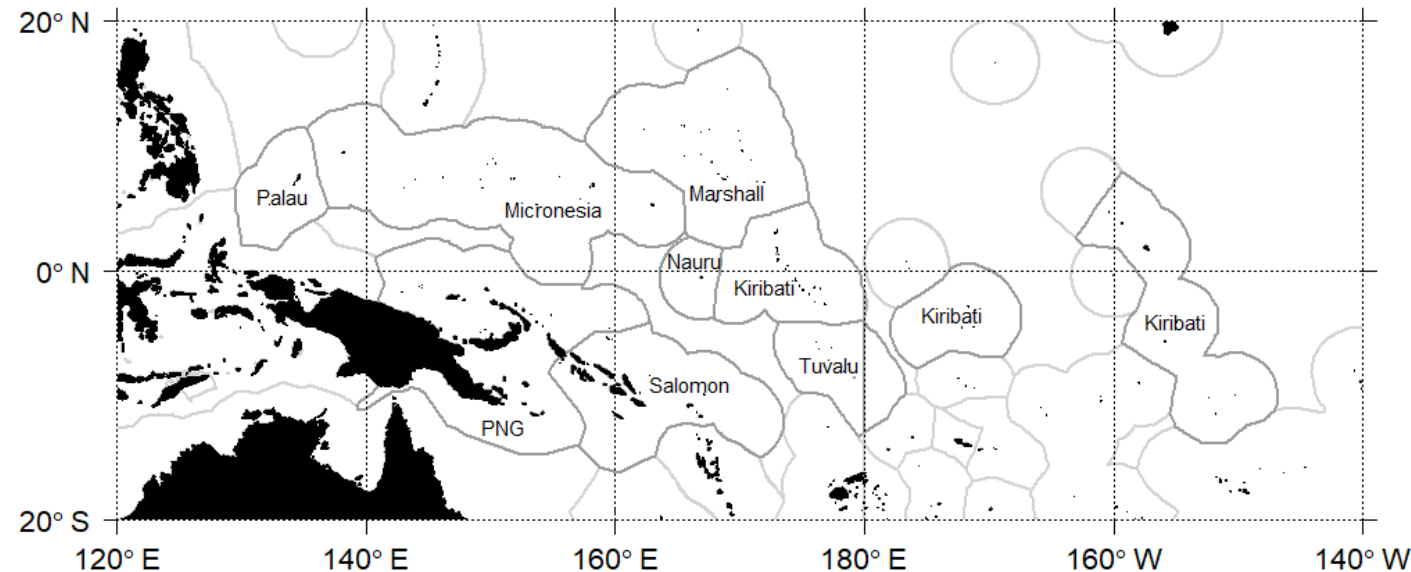
Western and
Central Pacific
Fisheries
Commission

Overview

The Parties to the Nauru Agreement (PNA) initiated a FAD tracking trial in 2016

Objectives:

- Understanding of the use of FADs
- Scientific info on impacts of FADs and fishing on them
- Economics of FAD use
- Inform FAD management



Co-funded by
European Union



iotc ctoi



Western and
Central Pacific
Fisheries
Commission

Summary of data

- **Cleaning**

	Number of transmissions	Number of buoys
Raw dataset	20,761,533	41,388
% removed during cleaning process	7.0 %	12.9 %
Corrected dataset	19,311,442	36,041

Fishing companies or vessel name (63% of the buoys) owner of each buoy

- **Data processing**

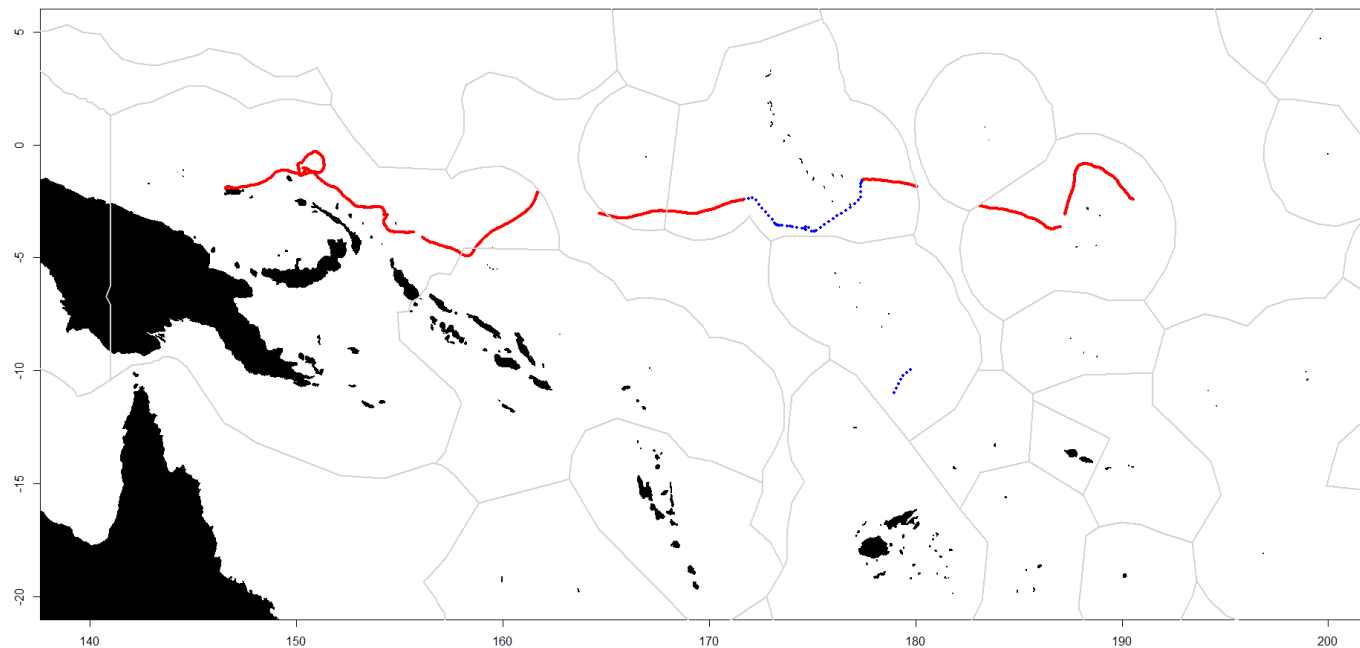
At sea portions of FAD track (Random forest); i.e. ~80% transmissions

Identification of deployments



Summary of data

- Challenges:**
- “Geo-fencing”
 - Non-complete dataset, even in PNA waters
 - Lack of consistent buoy identifiers in observer or logsheet data complicates the matching with trajectories



— On board
— A sea



Co-funded by
European Union



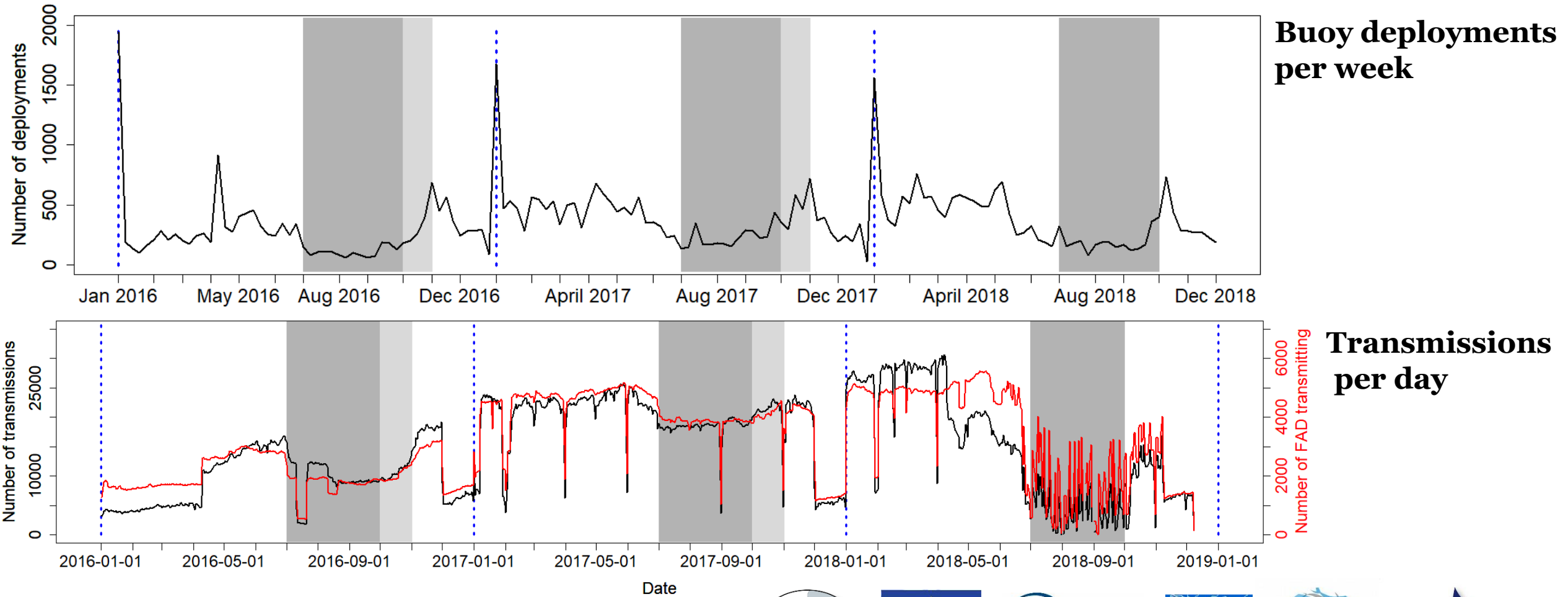
iotc ctoi



Western and
Central Pacific
Fisheries
Commission

Summary of data

- Temporal variability



Summary of data

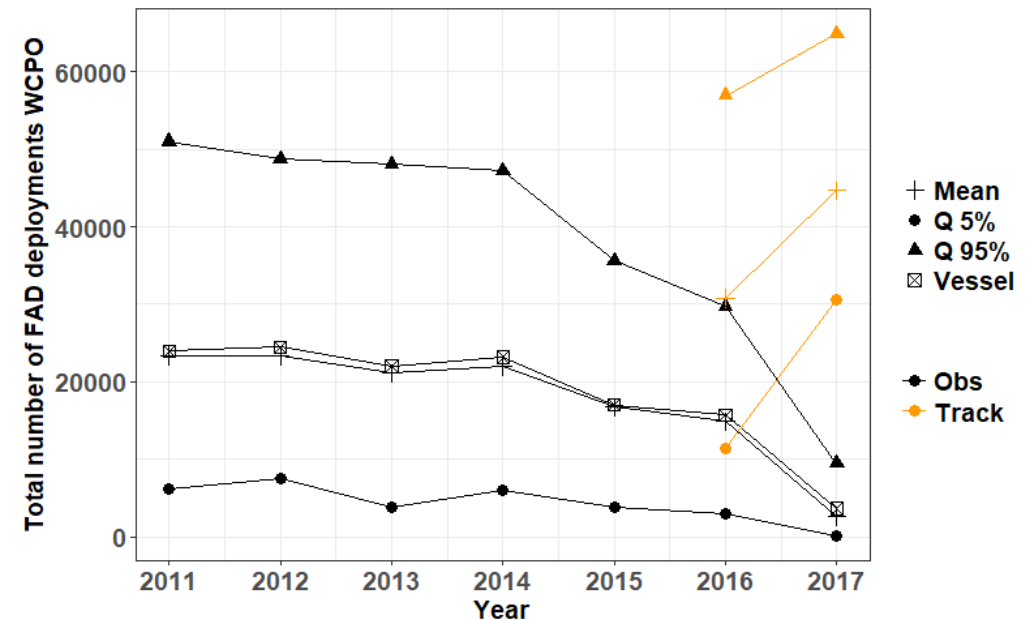
- **WCPFC CMM-2017-01**

Limit of 350 dFADs with activated instrumented buoys per vessel at any one time.

Buoys shall be activated exclusively on board the vessel and have a clearly marked reference number a satellite tracking system.

- **Number of buoy deployments estimated**

	Vessels with ≥350 deployments per year by estimation method				Vessels with ≥350 active FADs ≥150 active FADs	
	Vessel	Mean	Quantile 95%	FAD tracking	per year FAD tracking	per day FAD tracking
2011	1.9 %	0 %	18.4 %	-	-	-
2012	0.4 %	0 %	2.7 %	-	-	-
2013	0.4 %	0 %	2.7 %	-	-	-
2014	2.5 %	0 %	2.5 %	-	-	-
2015	0 %	0 %	0 %	-	-	-
2016	0 %	0 %	0 %	10.4 %	1.1 %	0 %
2017	0 %	0 %	0 %	25.5 %	15.7 %	3.9 %

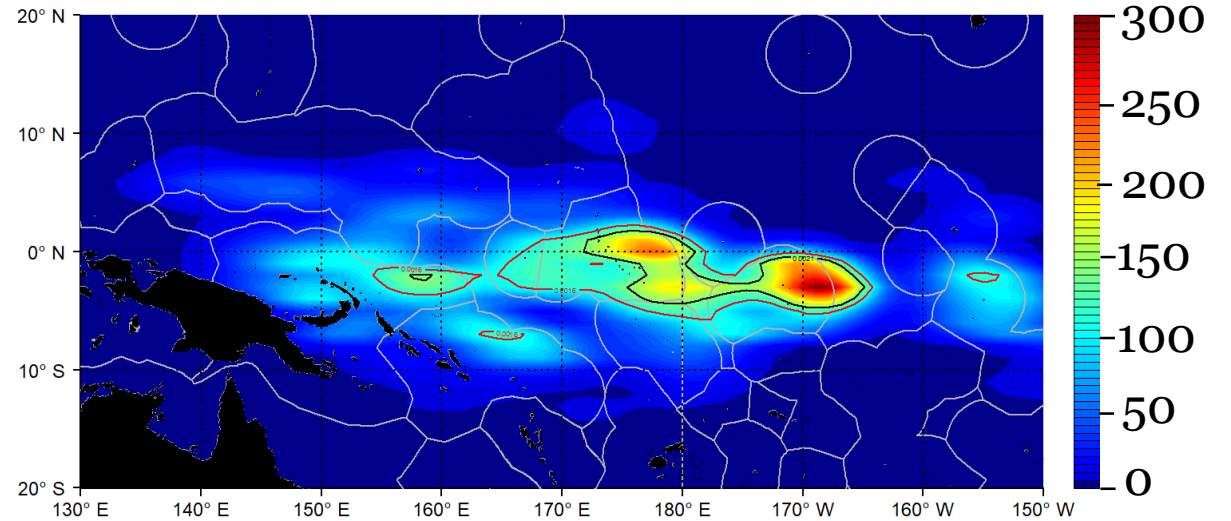
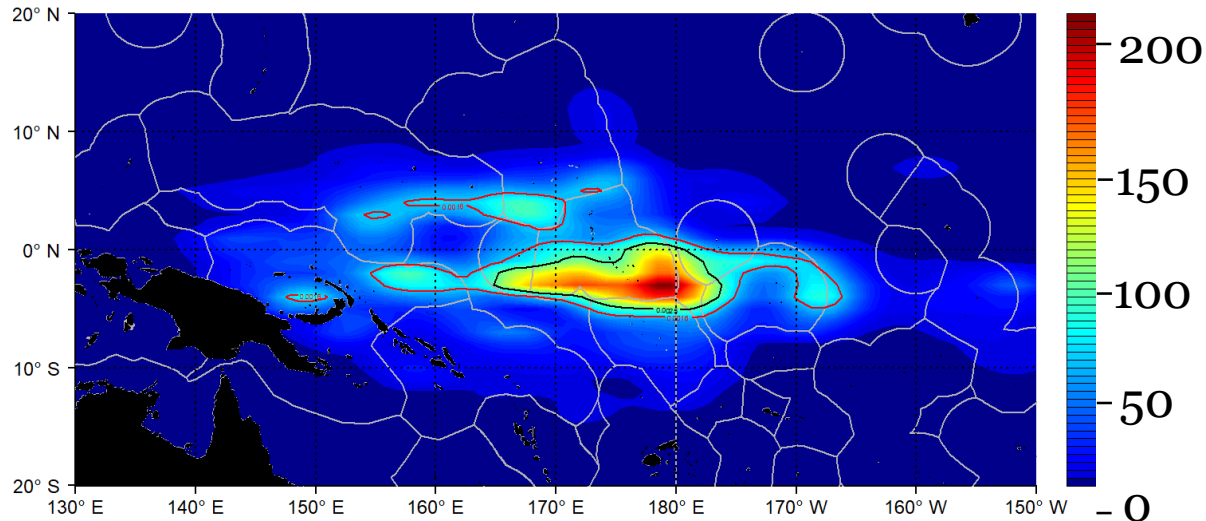


Spatial distribution

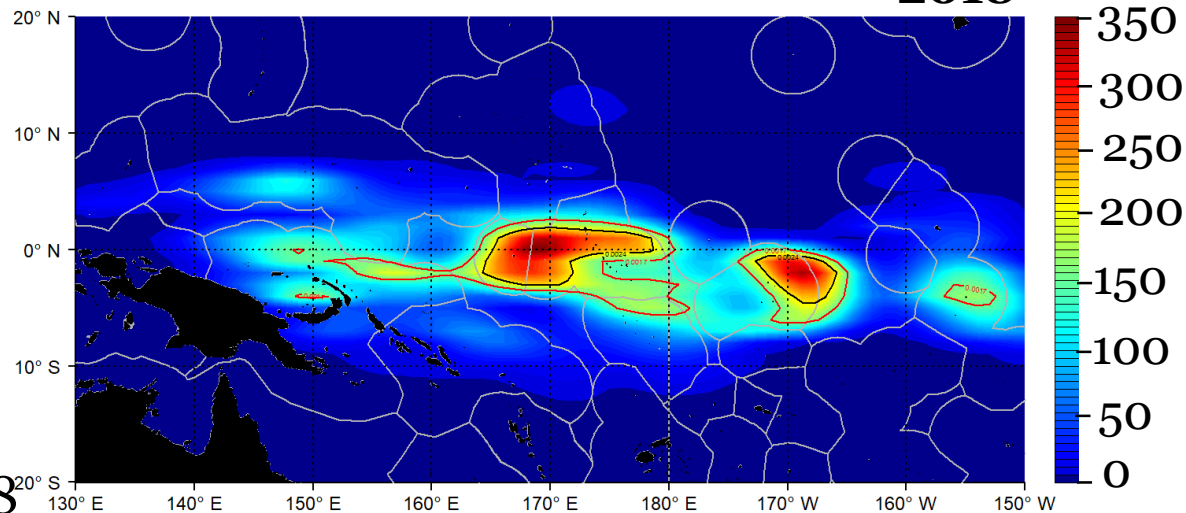
- Buoy deployments by year**

2016

2017



2018



Number of Deployments

WCPFC-SC14-2018/MI-WP-09



Co-funded by European Union

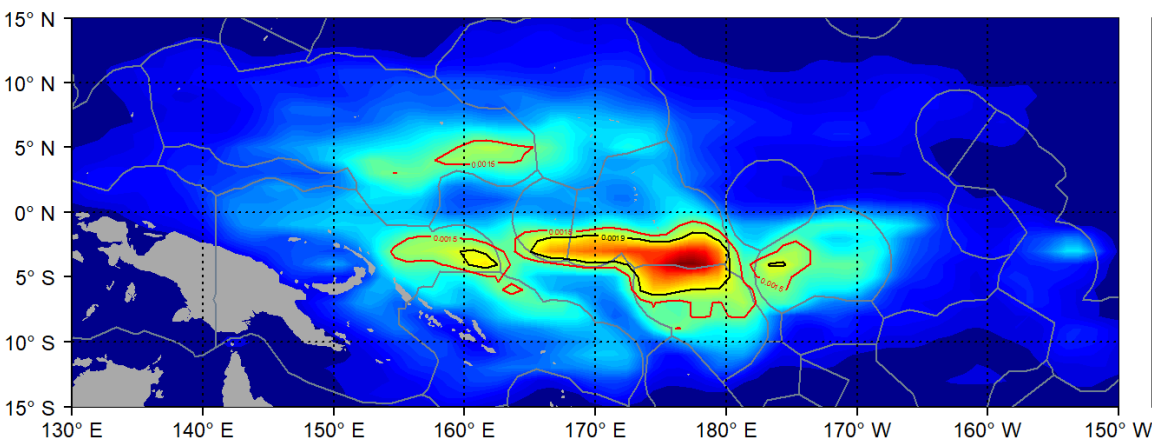


Western and Central Pacific Fisheries Commission

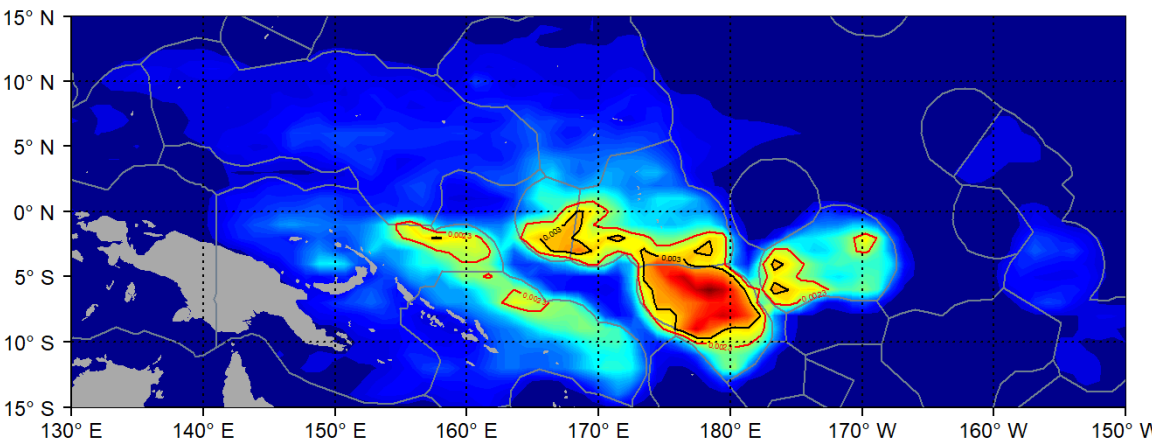
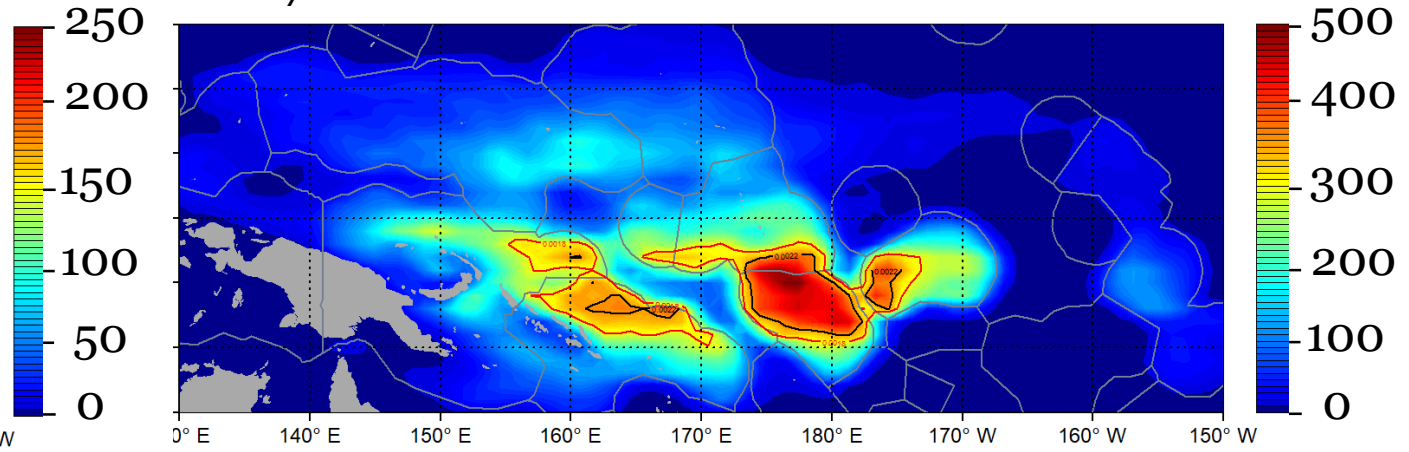
Spatial distribution

- FAD densities**

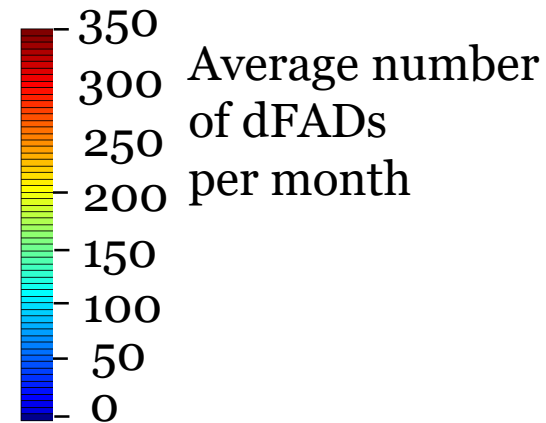
2016



2017



2018



Average number of dFADs per month



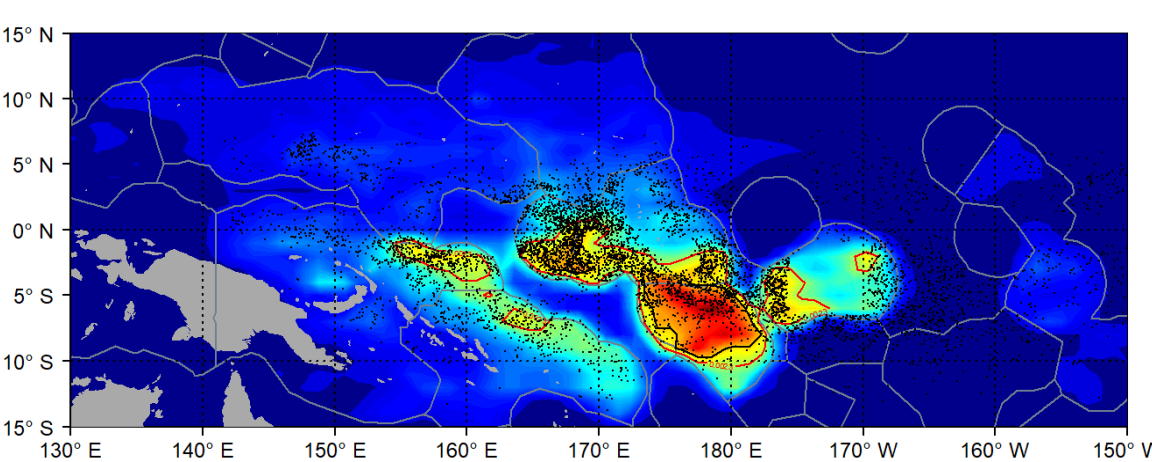
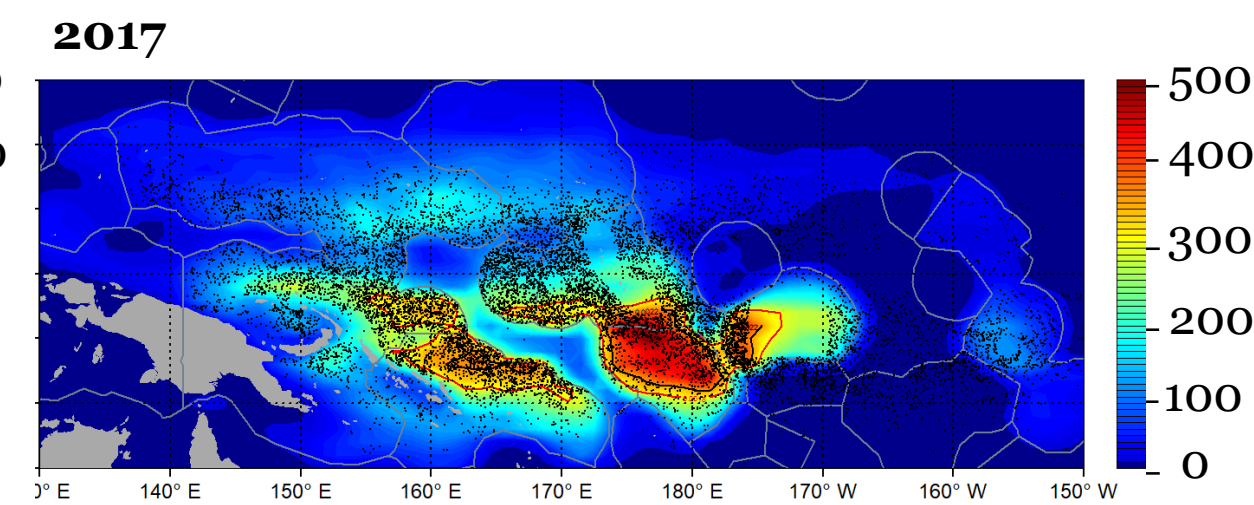
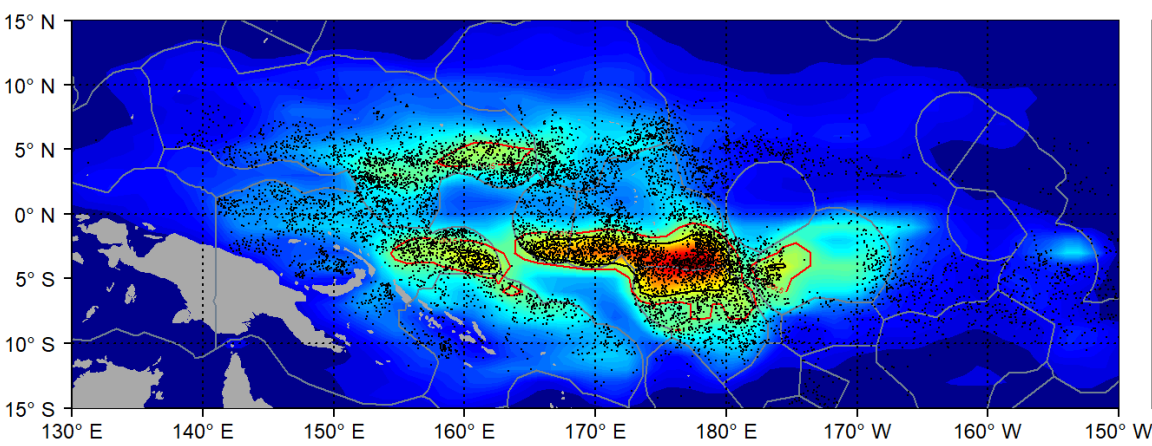
Co-funded by European Union



Western and Central Pacific Fisheries Commission

Spatial distribution

- FAD densities + associated sets**

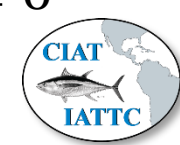


Average number
of dFADs
per month

2018

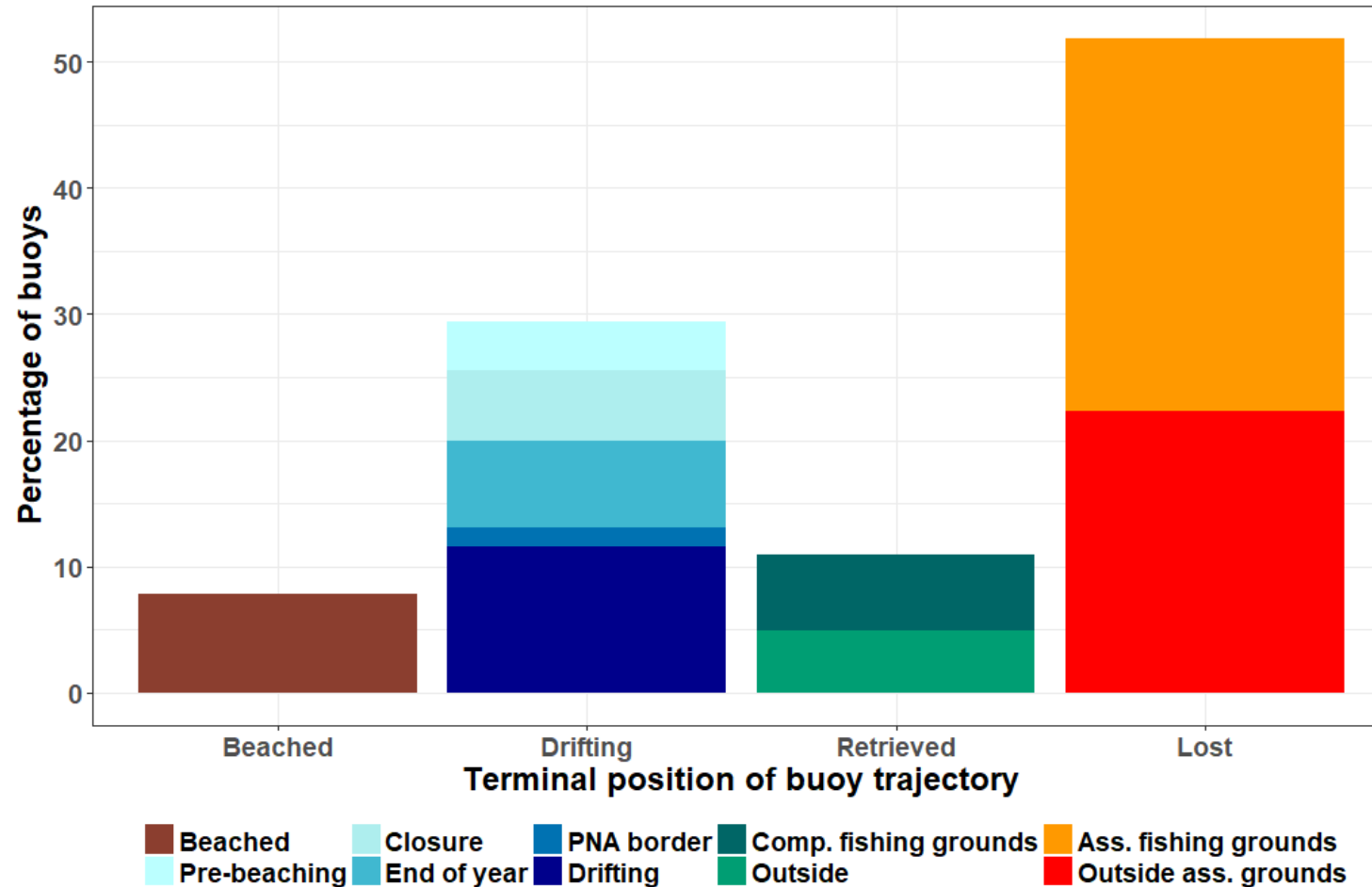
10

WCPFC-SC14-2018/MI-WP-09



FAD lost and beaching

- Fate of FADs**



Co-funded by European Union

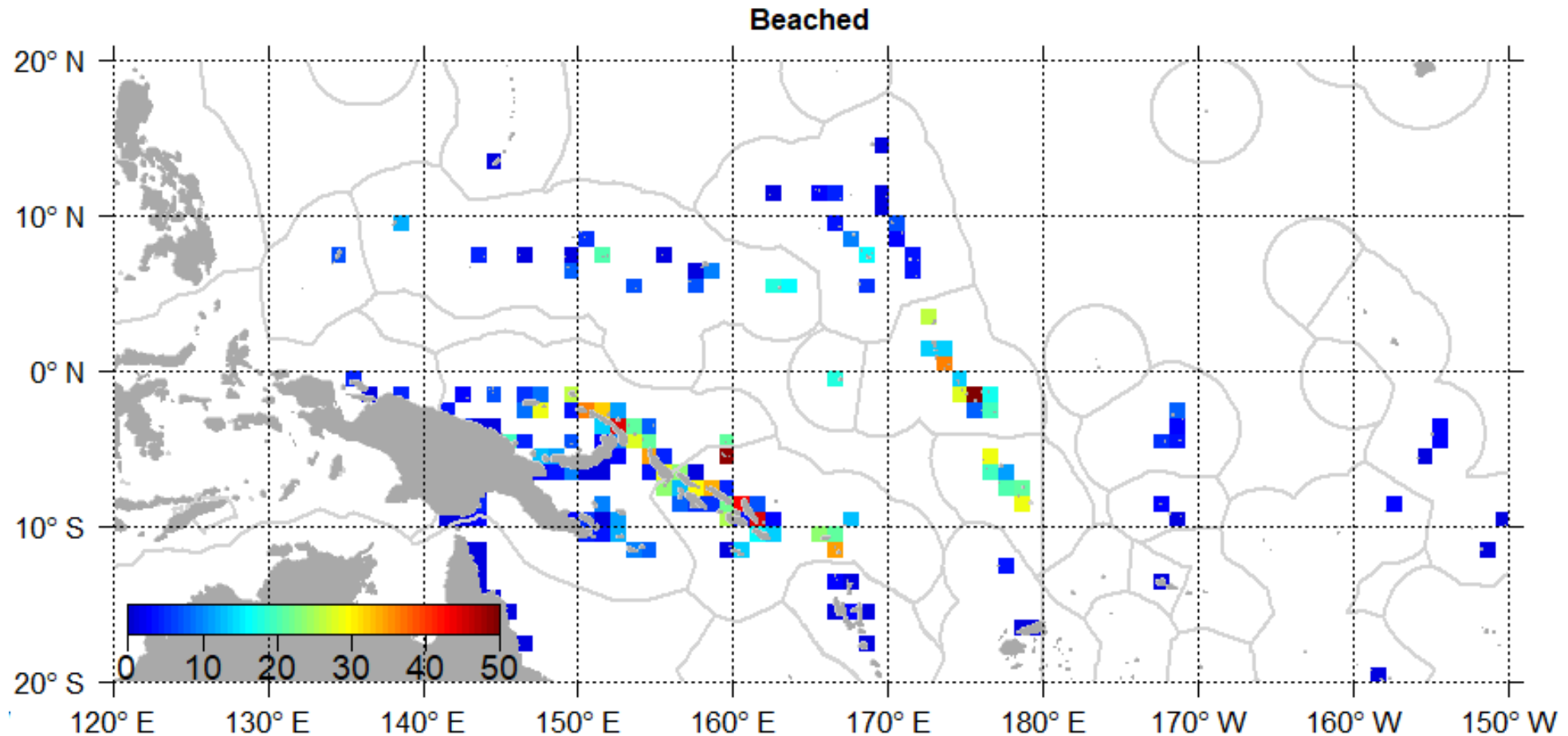


Western and Central Pacific Fisheries Commission

FAD lost and beaching

- **Beaching**

Total = 1300
7%



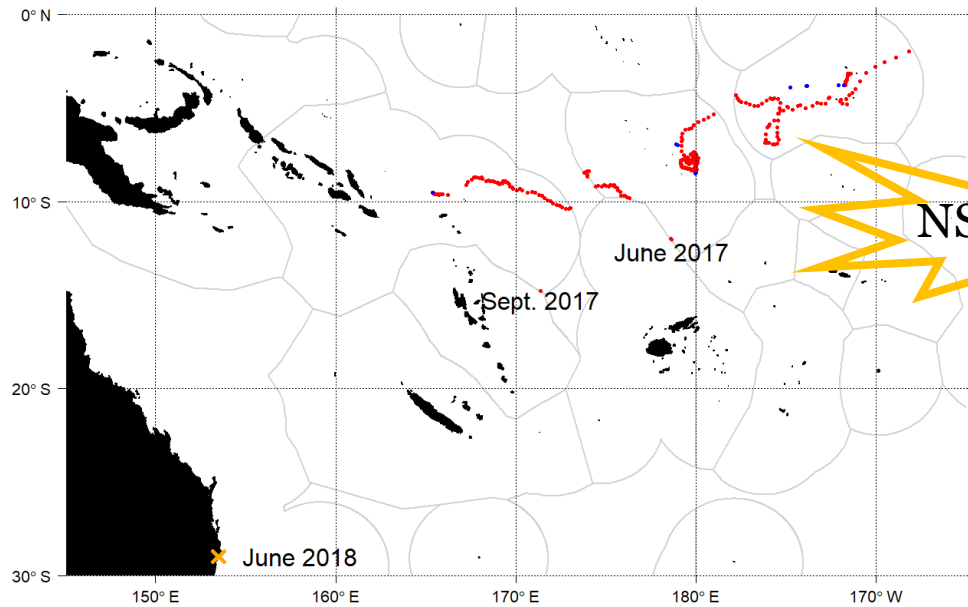
Co-funded by
European Union



Western and
Central Pacific
Fisheries
Commission

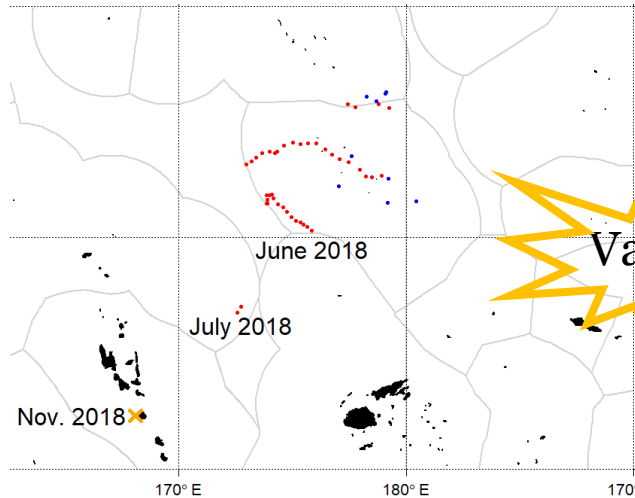
FAD lost and beaching

Unnoticed beaching ?



NSW, Australia

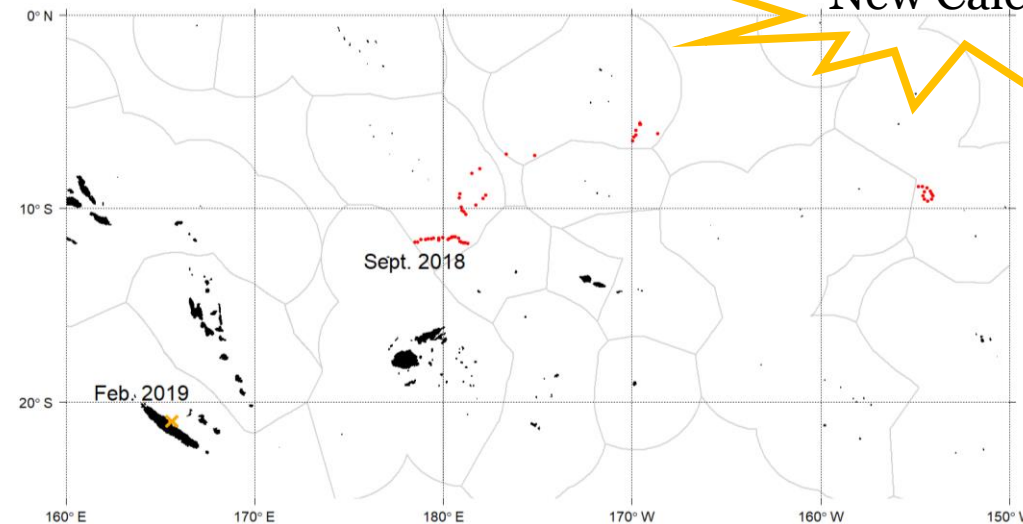
Vanuatu



EPO ??

Cook Islands

New Caledonia



Co-funded by European Union



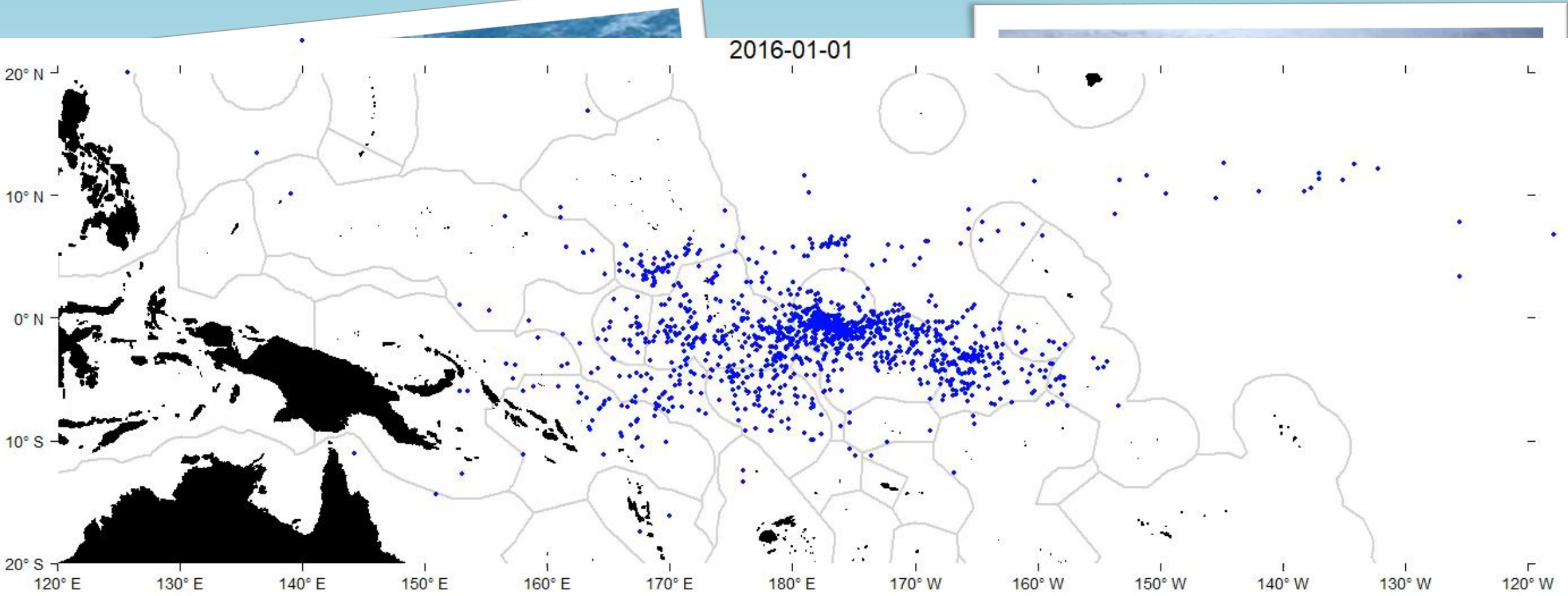
Western and Central Pacific Fisheries Commission

Conclusion

- **Access to a dataset of over 18,000 buoys per year**
- **Incomplete data submission and trajectory modification complicates analyses**
- **Patterns of deployments, drifting behavior and connectivity**
- **Estimation of FAD use: 30,000–65,000 buoys (re)deployed annually in 2016 and 2017**
- **FAD densities (incomplete), study of its influence on CPUE**
- **Beaching and loss of FADs**



Acknowledgments We thank the members of the Parties to the Nauru Agreement for data access and the Pew Charitable Trusts for the funding provided to support these analyses



Questions

laurianee@spc.int