



How to use the FAD deactivations/reactivations form (V1 08-2022)

This temporary form, developed using Excel until further notice, has been designed to ease the collection of information related to deactivations and reactivations of FADs in the EPO that must be reported under Resolution [C-21-04](#).

The data collected in this form are vessel-specific and are filled and reported on a monthly basis (see Resolution C-21-04 for details).

The form consists of two sheets:



- One for FAD deactivations (paragraph 20, C-21-04).
- One for FAD reactivations (paragraph 21, C-21-04).

Deactivation sheet (to comply with Annex II, C-21-04)

In this sheet, you provide the list of events when a buoy has been deactivated for a specific reason (see reasons allowed in Annex II of Resolution C-21-04 and in the table included in the form).

Vessel Buque		Vessel No Buque #	IATTC Vessel Register
------------------------	--	-----------------------------	---------------------------------------

The full name of the vessel must be provided in the relevant cell.

The IATTC vessel number must also be provided. If it is not known, the “**IATTC Vessel Register**” button can be used to access the vessel register on the IATTC website to obtain this number.

IATTC Vessel Register

Vessel register

DOCUMENTS SHORTCUTS **ADVANCED SEARCH** AUTHORIZED VESSELS PER COUNTRY

Name: Name Call sign: Call sign Min. Length (m):

Gear: Carrier vessel, Gillnet, Harpoon Flag: Belize, Canada, Chile

Min. Carrying capacity (t): Max. Carrying capacity (t): Min. Fish hold volume (m3): Max. Fish hold volume (m3):

Confirmation date: Both With Without [Internal Password \(Optional\)](#)



	Date Fecha	Buoy model Modelo boya	Buoy ID ID Boya	Reason Razon	Comments Comentarios
1					
2					

For each event involving the deactivation of a buoy, the following information must be provided:

- Date: local date when the deactivation occurred. The format should be YYYY/MM/DD.
- Buoy model: all buoy models are available from a drop-down list to ease the selection. A full description of all models is available by clicking on the “See buoys” button:

X

NAUTICAL		SATLINK		ZUNIBAL	
Model	Code	Model	Code	Model	Code
MDP	MDP	D+ battery	D+	Tunabal-7	T07
MDS	MDS	D+ battery with echosounder	DS+	Tunabal-e7	Te7
M2D	M2D	D+ solar	DL+	Tunabal-e7+	T7+
MSI	MSI	D+ solar with echosounder	DSL+	Tuna8 Expl.	T8E
M3i	M3I	IDP solar with echosounder	ISL+	Tuna8 Xtreme	T8X
M3i+	M3+	IDP solar disc. with echosounder	ISD+	Tunabal-7 (F series)	F07
M4I	M4I	SLX solar "ECO"	SLX+	Tunabal-e7 (F series)	Fe7
M4i+	M4+			Tunabal-e7+ (F-series)	F7+
MGO	MGO			Tuna8 Explorer (F-series)	F8E
				Zuni without sounder	Z07
				Zuni without sounder	Ze7

If you use a make or model not indicated in these tables, record it in the same way, but provide as much information as possible under Comments.

- Buoy ID: the numerical code (identifier) of the buoy. Note that the number of digits is brand-model specific.
- Reason: the reason why this buoy has been deactivated. A list of the seven possible reasons (taken from Annex II, C-21-04) is available to ease the selection.

Code-Codigo	Reason
1	Signal loss
2	Stolen FAD
3	Beaching
4	Temporarily during closure periods
5	Transferred ownership
6	FAD outside the areas (par. 20; C-21-04)
0	Other (specify in comments)

- Comments: this field is optional and is used to provide any additional information regarding the deactivation of the buoy (e.g., a buoy model not included in the drop-down menu).



Remote reactivation sheet (to comply with Annex III, C-21-04)

To be filled out, this sheet follows the same steps as the deactivation sheet.

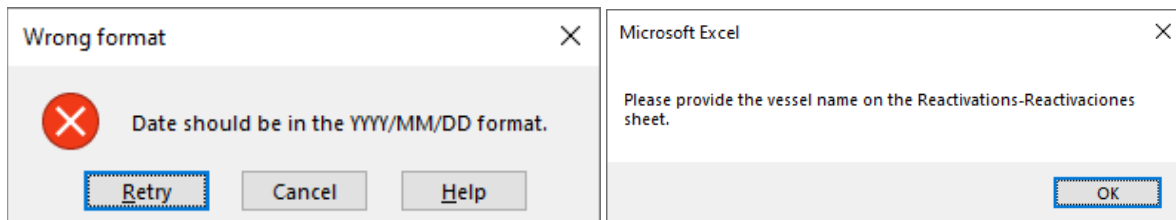
In this sheet, you provide the list of events when a buoy has been remotely reactivated for a particular reason (see Annex III for allowed reasons, Resolution C-21-04).

The list of reasons contains four choices (taken from Annex III, C-21-04):

Code-Codigo	Reason
1	Recovery of a signal loss
2	After a temporary deactivation during the closure period
3	Transfer of ownership
0	Other (specify in comments)

Submission of the form

During data entry or when saving the file, pop-up windows may appear if the format of the data included in a particular field is incorrect or if mandatory data are missing.



These are data quality control mechanisms to ensure that the required information is provided in the appropriate format. Please, apply the corrections suggested in the pop-up windows and the form will be automatically validated.

When all the monthly deactivation/remote reactivation records for a specific vessel have been entered, or if the maximum number of rows in the sheet (250 records) has been reached, the form can be saved.

The form should be named as follows:

“Deactivations_reactivations_XXXXX_YYYYMM.xls”

Where XXXX is the IATTC vessel number in the vessel register and YYYYMM is the year and month (e.g.: Deactivations_reactivations_12345_202208.xls).

The form should then be submitted to your CPC or to the IATTC Secretariat at buoyinfo@iattc.org.

Notes

When running the form of a Mac machine, the activation of the macros is necessary in order for the form to work properly.

For further information regarding the form, please contact Sylvain at buoyinfo@iattc.org.